

Fygg

Feed Your Good Guys™

The Future of Oral Care: An Alternative to Fluoride

- ✔ Promotes remineralization
- ✔ Prevents dental hypersensitivity
- ✔ Restores natural whiteness
- ✔ Nourishes the oral microbiome



Enamel Remineralization



Cavity Prevention



Sensitivity Reduction



Smooth and Protects Tooth Surface



Restores Natural Whiteness



Oral Microbiome Supportive



Fygg toothpaste is nourishing to the oral microbiome and supportive to the body. Formulated with your biome in mind, it has science-backed nano-hydroxyapatite for remineralization, prebiotics for microbiome support, and no unnecessary ingredients or irritating chemicals like SLS (or SLS substitutes), artificial flavors, or dyes.

As dentists who care deeply about your whole body health, we know healthier living starts with a balanced oral microbiome. We created Fygg because it's time for a change. It's time to Feed Your Good Guys™ and let your microbiome bloom!

Dr. Staci Whitman & Dr. Mark Burhenne



fygg.com



Up to 0.25mL for primary teeth



Up to 0.40mL for mixed dentition



Up to 0.75mL for permanent dentition

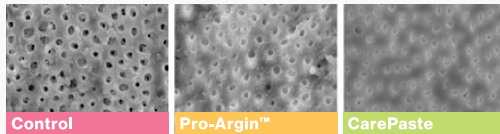
Fygg

Feed Your Good Guys™

For visual guidance only

Feed Your Good Guys™

Fygg's nano-hydroxyapatite (nano-HAp) toothpaste uses nanoXIM-CarePaste, currently the only formula backed by the SCCS in Europe as both safe and effective. With the addition of prebiotics and L-Arginine, and without the unnecessary addition of surfactants, and emulsifiers, Fygg not only remineralizes teeth, lessens sensitivity, and brightens smiles, but it also is one of the only formulas to support and nourish the oral microbiome!



Effect of Colgate Pro-Relief and nanoXIM-CarePaste - based toothpaste on dentin tubule occlusion after two minutes of treatment. A sample without treatment (control) was also analyzed. Data provided by Group Pharmaceuticals Ltd., India.

Unfortunately, some brands are misrepresenting their formulas, not disclosing their sources, and misinterpreting the data, confusing consumers and providers alike. Research shows that 1-3% of this type of optimal nano-hydroxyapatite (nano-HAp) is needed to be maximally effective and compete with fluoride. Higher amounts might be needed in suboptimal forms of nano-HAp or in microhydroxyapatite or microcluster form. Please head to Fygg.com for all the research and White Papers on nano-XIM.CarePaste and to better grasp the science.

% nanoXIM.CarePaste in the toothpaste	% nano-HAp in the toothpaste
3,0%	0,465%
5,0%	0,775%
6,5%	1,008%
10,0%	1,550%
15,0%	2,325%

Here is a conversion table showing how 10% of nanoXIM.CarePaste equates to 1.5% of total nano-HAp in the final toothpaste product. We use 15.5% nano-XIM Paste, resulting in a 3.1% total nano-HAp, falling in the upper end of the 1-3% range that research is showing is necessary for optimal remineralization and efficacy in this high-quality and SCCS-approved nano-HAp.

Please remember that source, size, shape, and quality matter regarding nano-HAp, and nanoXIM-CarePaste and Fluidinova products are currently **the only** HAp-approved sources.

Fygg vs. Leading Competitors

Feed Your Good Guys™

	Fygg	Bioré	Bioré	Davids	NEO	Softline	Primalife	Bite	Fluidinova
Contains % nanoXIM-CarePaste	✓	✓	✓	?	✗	✗	✓	✗	✗
Free from Emulsifiers, and Surfactants, Including Derivatives	✓	✗	✗	✗	✗	✗	✓	✓	✓
Oral Microbiome Supportive Ingredients	✓	✗	✗	✗	✗	✗	✗	✗	✓
Formulated and Founded by Dentists	✓	✗	✓	✗	✓	✗	✗	✗	✓

Fygg's Mild Mint nano-HAp Toothpaste with nanoXIM-CarePaste Ingredients: Aqua/Water, Xylitol, Nano Hydroxyapatite, Hydrated Silica, Bentonite Clay, Creamy Mint Flavor, Potassium Sorbate, Siraitia grosvenorii (Monk Fruit) Extract, Gluconolactone, Matcha Flavor, L-Arginine, Hydroxyapatite, Polydextrose (Litesse) Powder

Utilizes the only form of nano-HAp approved by the SCCS in Europe

Remineralizes Teeth
Lessens Sensitivity
Whitens & Brightens



Low Relative Dentin Abrasivity (RDA), which prevents enamel damage

Without harsh emulsifiers, surfactants, and unnecessary ingredients like astringents and excessive essential oils

DIRECTIONS

- Shake or massage the tube for 10 seconds before each use.
- Dispense appropriate amount of varnish based on the patient's dentition.
- Use a brush, cotton swab, or gloved finger to apply, aiming for an application time of 30 seconds, using sweeping strokes.
- Can be applied to areas of light plaque and moisture.
- Instruct patients to have nothing to eat or drink for 30 minutes after application for optimal benefits.
- Floss between teeth if the patient has incipient interproximal lesions.
- Smile because you just helped another human thrive ;)