

# RECYCLING INFORMATION



## EVOLIS HIGH TRUST® CONSUMABLES

How to optimize the way you recycle your Evolis High Trust® cards, cleaning kits and ribbons (color, monochrome and security ribbons).

This document shows you the main components for each consumable and how to dismantle them. Each element must be separately sorted to optimize recycling.

**Recycling facilities and waste treatment regulations vary depending on the location and profile of each user (private individuals, associations, businesses, local authorities, public sector, etc.). To find out about your various recycling options and to set up a suitable collection procedure, please contact your local waste treatment companies.**



### CARDS

#### COMPOSITION OF EVOLIS HIGH TRUST® CARDS

| CARDS TYPE  | REFERENCE  | MATERIAL             |
|---|--|----------------------|
| PVC cards without encoding<br>All formats and colors combined | C4001, C4002, C4512, C4521, C8001, C8152, C8122, C8521, C4101, C4301, C4401, C4601, C4701, C9001 | PVC                  |
| PVC cards – magnetic encoding                                 | C4003, C4004   | PVC + magnetic strip |
| Rewritable cards  | C5101, C5201   | PVC + PET            |
| Composite PETF cards  | C3001  | PETF + PVC overlays  |
| Paper cards   | C2501, C2511   | PAPER                |



PVC is recyclable, whatever the color and format of the card. The more technical the card (encoding, rewritable zones, etc.), the more complex recycling becomes. It may even be prevented entirely.

Paper cards can be sorted with cardboard waste.

#### CARD CUSTOMIZATION AND RECYCLING

Color or monochrome card printing does not affect recycling. Blank and printed cards can be collected together.

During lamination, a layer of PET is added to the card. This makes it harder to recycle the card, or may even prevent recycling.

### CLEANING KITS

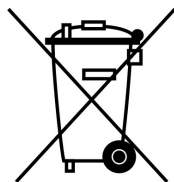


Evolis cleaning kits are not recyclable. Only the cardboard packaging should be sorted with cardboard waste.

## COLOR, MONOCHROME AND SECURITY RIBBONS

Ribbons themselves are not recyclable because of their chemical properties. But some components of the consumable can still be recycled. In order to optimize how each element is recycled, you will need to remove the ribbon, the labels, and the chip (for the references concerned).

### European WEEE legislation



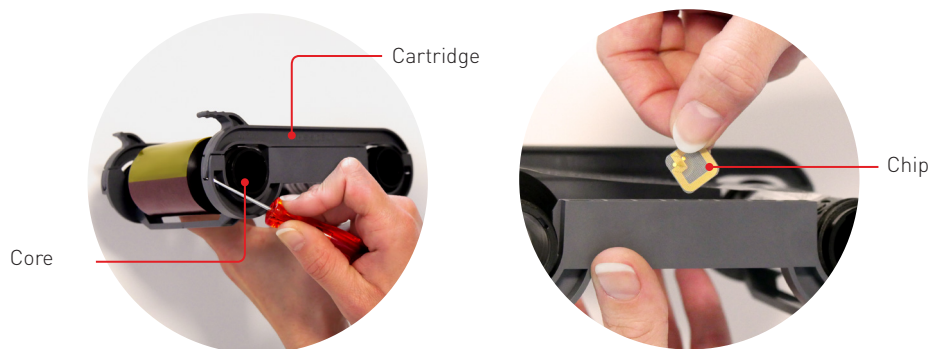
From August 2018, every ribbon and activation key containing a RFID chip are considered as a waste of electrical and electronic equipment (WEEE) in accordance with **European directive 2012/19**.

Application of this symbol on your equipment is confirmation that you must dispose of this equipment in compliance with agreed national procedures.

**Compatible printers:** Zenius, Primacy, Primacy Lamination, Edikio Flex, Edikio Duplex, Elypso, KC200, KC200B, Issengo, Privelio, Privelio XT, Altess

**Reference types** (non-exhaustive list) : R5F008xxx, R5H004NAA, RCT023NAA, RCT015NAA, R2F010NAA, etc.

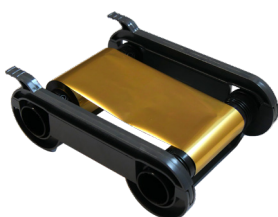
### RIBBON CARTRIDGE – ZENIUS/PRIMACY RANGE



How to dismantle a Zenius/Primacy cartridge and to remove the chip

### Composition and material:

| COMPONENT | MATERIAL               | RECYCLING INFORMATION                                  |
|-----------|------------------------|--|
| RIBBON    | Inked PET + label      | non-recyclable   |
| CORES*    | Recycled PET           | can be recycled at a suitable facility (without label) |
| CARTRIDGE | Regenerated PS + label | can be recycled at a suitable facility (without label) |
| RFID CHIP |                        | has to be recycled as a WEEE**                         |
| BLISTER   | Recycled APET + label  | can be recycled with transparent PET packaging         |



*\*To limit the environmental footprint, the ribbon cores will gradually transit to 100% recycled PET from January 1, 2018.*

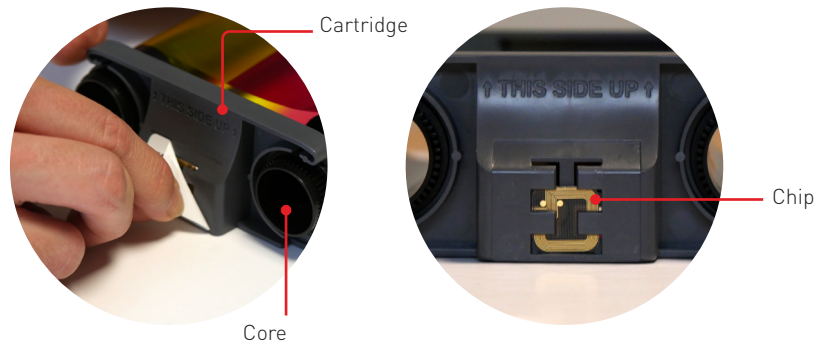
*The new generation cores have the >PET< mark. The older generation ribbon cores were made of POM.*

*\*\* WEEE European Directive 2012/19*

**Compatible printers:** Badgy100, Badgy200, Apteo, Edikio Access

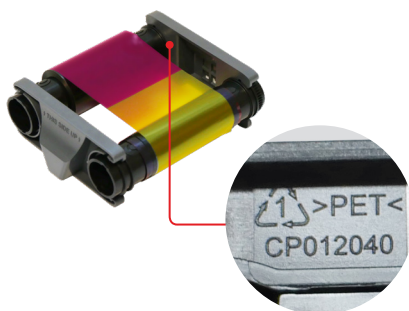
**Reference types** (non-exhaustive list) : CBGR0100C, CBGR0500K, RCT025NAA

## RIBBON CARTRIDGE – BADGY 100/200 RANGE



How to dismantle a Badgy cartridge and to remove the chip

### Composition and material:



| COMPONENT | MATERIAL               | RECYCLING INFORMATION                                  |
|-----------|------------------------|--|
| RIBBON    | Inked PET + label      | non-recyclable   |
| CORES*    | Recycled PET           | can be recycled at a suitable facility (without label) |
| CARTRIDGE | Regenerated PS + label | can be recycled at a suitable facility (without label) |
| RFID CHIP |                        | has to be recycled as a WEEE**                         |
| BLISTER   | Recycled APET + label  | can be recycled with transparent PET packaging         |
| NOTICE    | Cardboard              | can be recycled with cardboard packaging               |

*\*To limit the environmental footprint, the ribbon cores will gradually transit to 100% recycled PET from January 1, 2018.*

*The new generation ribbon cores have the >PET< mark. The older generation ribbon cores were made of POM.*

*\*\* WEEE European Directive 2012/19*

**Compatible printer:** Primacy Lamination, Avansia Lamination

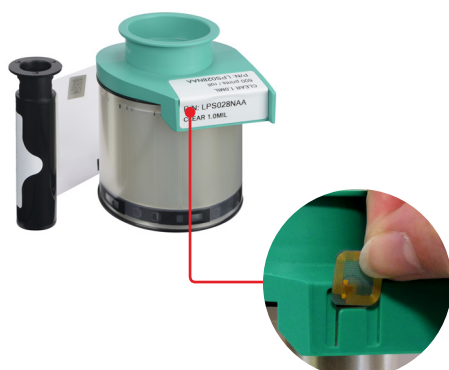
**Reference types** (non-exhaustive list) : LPS028NAA, LPS029NAA, LPS030NAA, LPS032NAA, LPA047NAA, LPA048NAA, etc.

## RIBBON – LAMINATION RANGE

### Composition and material:

| COMPONENT    | MATERIAL          | RECYCLING INFORMATION                                  |
|--------------|-------------------|--|
| RIBBON       | Inked PET + label | non-recyclable   |
| CORES        | POM + PS          | can be recycled at a suitable facility (without label) |
| CHIP SUPPORT | PS                | can be recycled at a suitable facility                 |
| RFID CHIP    |                   | has to be recycled as a WEEE*                          |
| BLISTER      | Recycled APET     | can be recycled with transparent PET packaging         |

*\*WEEE European Directive 2012/19*



How to remove the chip from the support

**Compatible printers:** Quantum, KM500B/KM2000B, Securion, Tattoo, Pebble, Dualys

**Reference types** (non-exhaustive list) : R3011, R2131, R2011, R3012, R4002, R4221, R2121, etc.



**Compatible printer:** Avansia, Avansia Lamination

**Reference types** (non-exhaustive list) : RT4F010xxx, RTCL009NAA



Activation key

## RIBBON – QUANTUM, PEBBLE, DUALYS RANGE

### Composition and material:

| COMPONENT         | MATERIAL          | RECYCLING INFORMATION                                  |
|-------------------|-------------------|--|
| RIBBON            | Inked PET + label | non-recyclable   |
| CORES             | POM               | can be recycled at a suitable facility (without label) |
| PLASTIC PACKAGING | Polyolefin        | can be recycled at a suitable facility                 |
| CARDBOARD         | Cardboard         | can be recycled with cardboard packaging               |

## RIBBON – AVANSIA RANGE

### Composition and material:

| COMPONENT                  | MATERIAL                     | RECYCLING INFORMATION                                  |
|----------------------------|------------------------------|--|
| RIBBON                     | Inked PET + label            | non-recyclable   |
| CORES                      | POM                          | can be recycled at a suitable facility (without label) |
| ACTIVATION KEY + RFID CHIP | ABS                          | has to be recycled as a WEEE*                          |
| CLEANING ROLL              | Cardboard + adhesive surface | can be recycled with cardboard packaging               |
| BLISTER                    | Recycled APET                | can be recycled with transparent PET packaging         |
| NOTICE                     | Cardboard                    | can be recycled with cardboard packaging               |

\*WEEE European Directive 2012/19