



We bring speech to life™

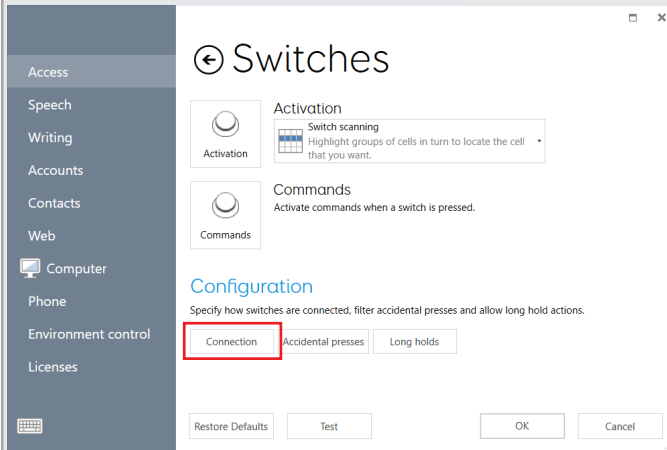
Switch Scanning Quick Reference Guide

Connection

Before you can access switch scanning options, connection and activation types must be established.

Select **Menu > Settings > Access > Switches.**

Under *Configuration*, select **Connection**. Select the appropriate option from the drop down menu, then click the ⊕ button to return to the *Switches* menu.

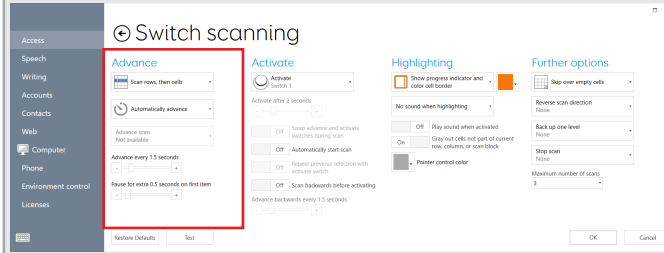


Connection:

Next, under *Activation*, choose **Switch Scanning** from the drop down menu, then click **Activation** to begin editing your switch scanning options under *Advance*, *Activate*, *Highlighting* and *Further options*.

Advance

Configure how cells are scanned and selected.



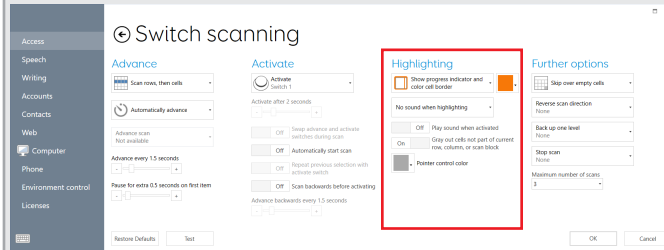
Scan pattern/order:

Time on each item:

Extra time for first item:

Highlighting

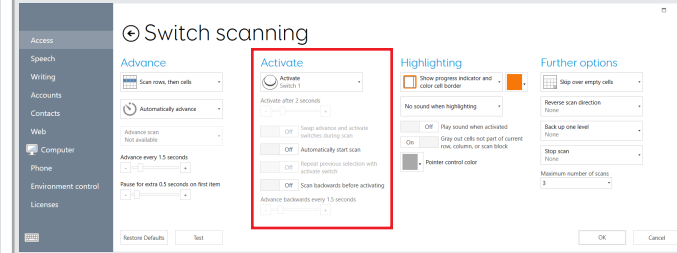
Choose how selected cells are displayed.



Highlight style:

Activate

Set switch actions and durations.



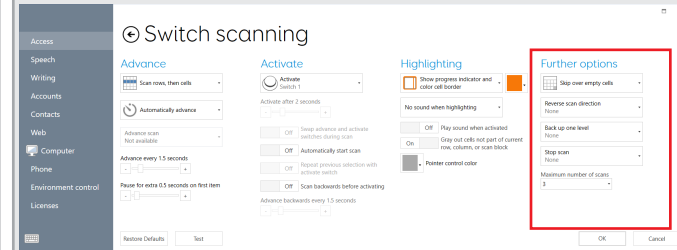
Switch 1 Action:

Switch 2 Action:

Automatically start scan:

Further Options

Program secondary actions and other settings.



Miscellaneous settings: