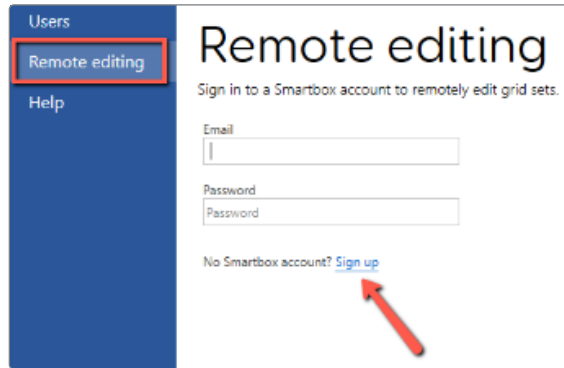




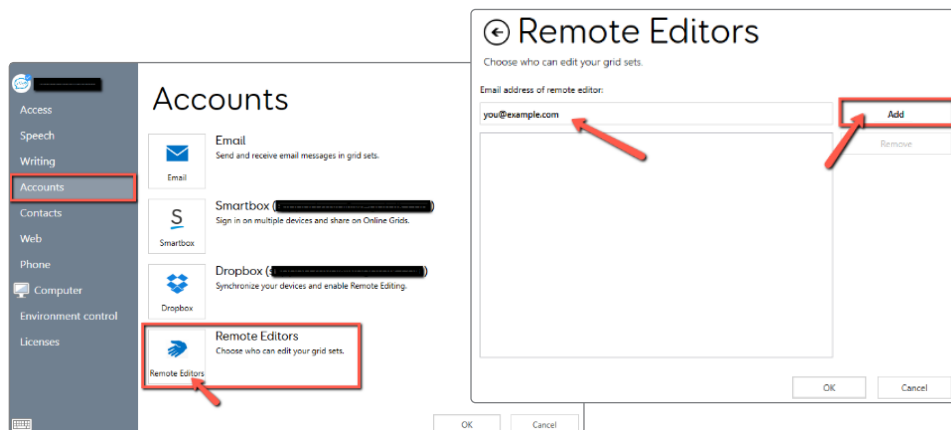
We bring speech to life™

zuvo™ & eyespeak™ Quick Reference Remote Editing in Grid



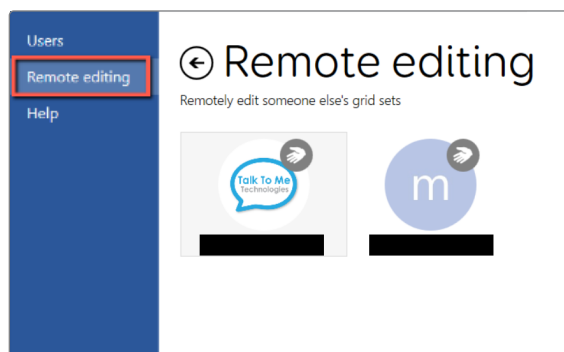
Step 1

1. Download 60-day free trial of Grid 3 at thinksmartbox.com/download-grid-3.
Note: Once the trial expires the remote editing function will remain.
2. Sign up for a Smartbox account by opening Grid 3 and clicking on **Remote Editing > Sign Up**.
3. Fill out all fields accordingly > **Create Account**.



Step 2

1. In Grid Explorer select **Menu > Settings > Accounts > Remote Editors**.
2. Enter your email address (the one associated with your Smartbox account created in Step 1) > **Add**.
3. Enter remote editor's email address > **Add > OK**.



Step 3

1. You can now open Grid 3 and select **Remote Editing** on the left side.
2. Sign in and choose the user you want to edit. You can edit the vocabulary/page sets as if you were on their device. As long as you are both connected to WiFi, all changes will sync automatically.
3. When finished, click **Menu > Stop Remote Editing**.

Need help?

877.392.2299 Option 3

support@talktometechnologies.com

talktometechnologies.com