



We bring speech to life™

# NOVA Chat Quick Reference

## Software Update

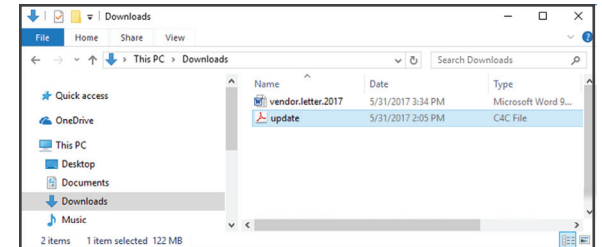
### Check the software version on your NOVA Chat

1. Check software version on your NOVA Chat: Select **Menu > Help > About**.
2. Using a computer, go to [saltillo.com](http://saltillo.com) > select **Support & Training** from navigation menu > **Downloads**.
3. Navigate to your NOVA Chat model > select your preferred language to open list of available updates.
4. If there is a newer software version available, proceed to next step.

### Download software update onto a computer

**Important:** When more than one update is available for your device, you will need to install all versions to properly update your software. For example, if your device has software version 2.4.0 installed, but versions 2.4.1, 2.4.2, and 2.5.0 are available, you must install all three updates onto your device. Updates must be downloaded and installed individually and in sequential order, making it necessary to complete the following steps for each available update. However, Saltillo may package several updates into one file, allowing you to install multiple updates at the same time instead of individually.

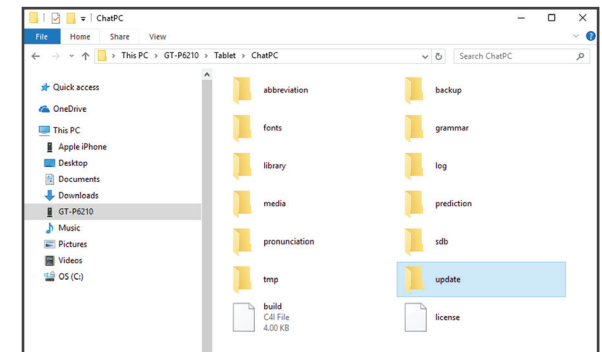
1. Using a PC or MAC, go to [saltillo.com](http://saltillo.com) > select **Support & Training** from navigation menu > **Downloads**.
2. Navigate to your NOVA Chat model > select your preferred language to open a list of available updates.
3. Select the next sequential update to download > the file will save in the computer's Downloads folder under the name update (see *first screenshot*).



Downloads folder containing update file on a PC

### Upload software update to your NOVA Chat

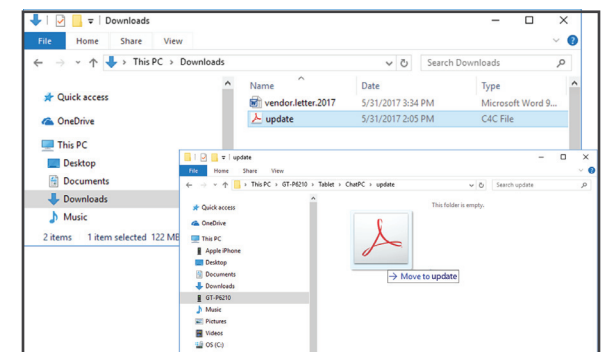
1. Using a TMT-approved USB cable, connect your NOVA Chat to the computer with the software update.
2. On your PC or MAC, open the Downloads folder containing the NOVA Chat update file.
3. Open your device location on your PC or MAC > select **ChatPC > Update** (see *second image*). If applicable, empty the folder by deleting any existing files.
4. Select and drag the software download into the **Update** folder (see *the last image*).
5. If not already, rename file name to *update*. To rename: right-click on file > select **rename** from menu options > type *update* as new file name.
6. Disconnect your NOVA Chat from the computer.



Device > ChatPC > update folder

### Install software update onto your NOVA Chat

1. On your NOVA Chat, select **Menu > Help > Check for Updates > Check Now**.
2. Select **All > Install** > and **Yes** as you follow device prompts to complete the software update. The device will automatically restart and open to your vocabulary homepage when the update is complete.



Select and drag file to update folder

Need help?



877.392.2299 Option 3



support@talktometechnologies.com



talktometechnologies.com