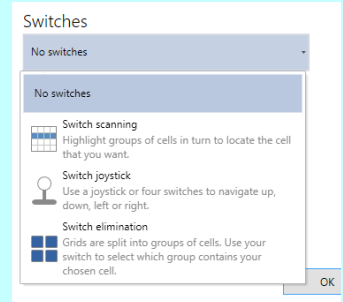


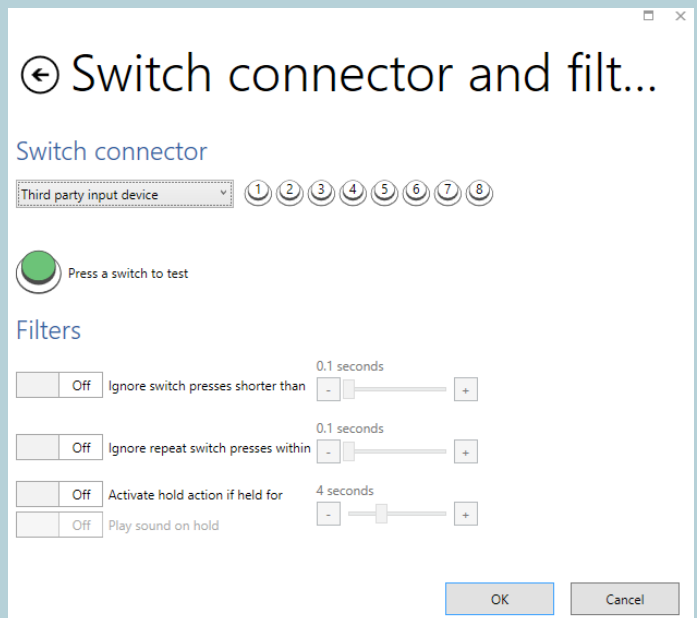
# Settings Switch

Click on the Menu bar, then **Settings, Access and Switches**.

Choose whether you will be using **Switch scanning**, **Switch joystick** or **Switch elimination**. Now click on **Switches**, then **Switch connector and filters**.



If using a Smartbox switch connector, select Joystick. You can also use a keyboard, mouse or third party device, or even use your entire touch screen as a single switch. Press your switch(es) to test – you should see one of the numbers at the top turn green.



## ★ Tip

You can filter short and repeat switch presses to reduce accidental triggers.

# Settings

## Switch scanning

### Advance

Choose the scan pattern – one cell at a time, or by rows, columns or custom blocks.  
Choose how the scan will advance – automatically or manually with a switch press.

### Highlighting

Choose how the highlighted cell will appear during the scan, by color and / or magnification.  
Choose whether audio highlighting will be used.

### Activate


Choose which switch will be used to make a selection.


### Further options

Choose options for skipping empty cells, reversing scan direction, backing up a level, and cancelling a scan.

At any time click **Test** to check your settings.

#### Advance

 Scan rows, then cells ▾



 Automatically advance ▾

Advance scan  
Not available ▾

Advance every 1.5 seconds  
- [ ] +

Pause for extra 0.5 seconds on first item  
- [ ] +

#### Highlighting


 Show progress indicator and color cell border ▾ 

No audio highlighting ▾

Off Play sound when activated

On  Gray out cells not part of current row, column, or scan block

#### Activate

 Activate  
Switch 1 ▾

Activate after 2 seconds  
- [ ] +

Off Swap advance and accept switches during scan

Off Automatically restart scan after activating

Off Repeat previous selection with accept switch

Off Scan backwards before activating

Advance backwards every 1.5 seconds  
- [ ] +