

Click on the **Menu bar**, then **Settings, Access and Touch**.

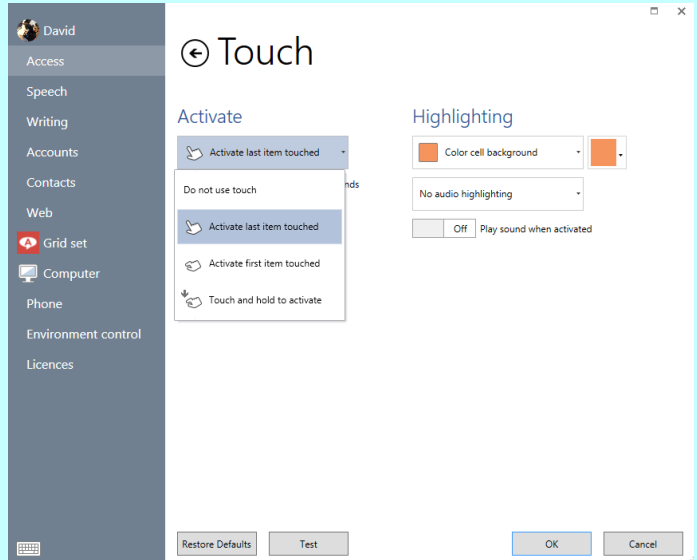
Activate

Do not use touch

Touching the screen will not activate cells.

Activate last item touched (on release)

Hold your finger on the screen to highlight cells. Once the desired cell is highlighted, release to activate it.

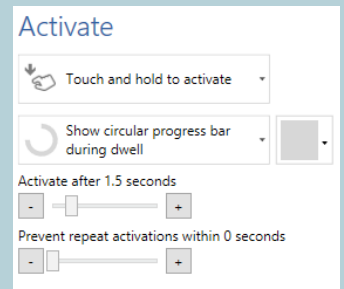


Activate first item touched

Directly activate a cell as soon as it is touched.

Touch and hold to activate

Hold your finger on a cell to activate it. The activation time and appearance of the dwell timer can be adjusted.



Settings

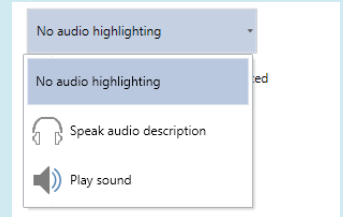
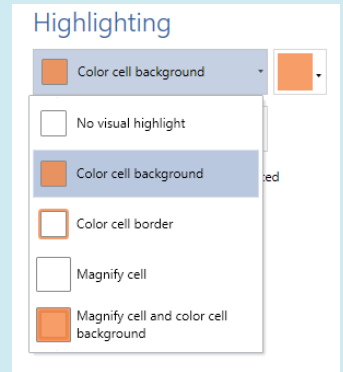
Touch

Highlighting

As well as visual highlighting options, audio highlighting can also be used to help visually impaired users.

Speak audio description – uses the audio highlighting voice (see 3.3) to read out the label of the highlighted cell.

Play sound – plays a sound each time a new cell is highlighted. You can also choose to play a sound when a cell is activated.



On screen keyboard

Touch the keyboard icon located under the menu or in the bottom left of settings windows to bring up the on screen keyboard. This is useful when setting up touch screen devices.



Tip
Touch and hold to
'right click'

