

Settings

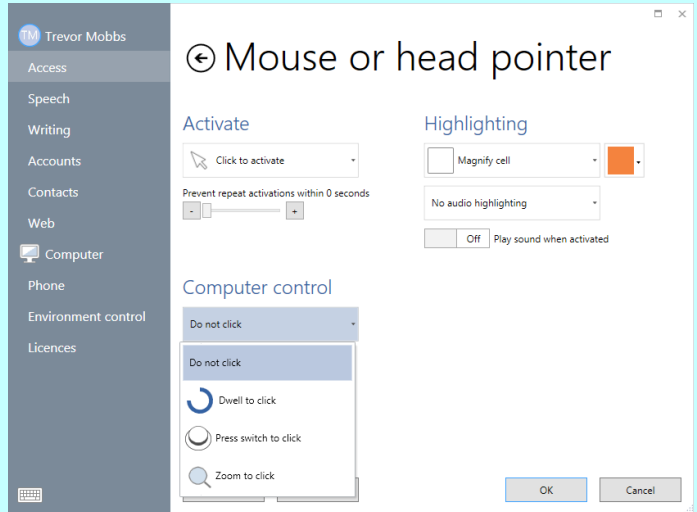
Mouse or head pointer

Click on the **Menu** bar, then **Settings**, and **Access**.
From Access Settings, click on **Mouse or head pointer**.

Activation

Choose how to activate a cell – e.g. click, hold, dwell or press switch.

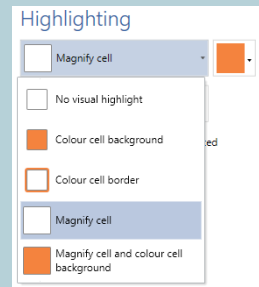
Further options will be available depending on the activation method – e.g. dwell time, appearance of dwell timer.



Accidental activations can be reduced by using the 'Prevent repeat activations within a specific time period' control.

Highlighting

Change the way that the cell you are pointing to is highlighted. You can change the color of the border or background and magnify the cell.



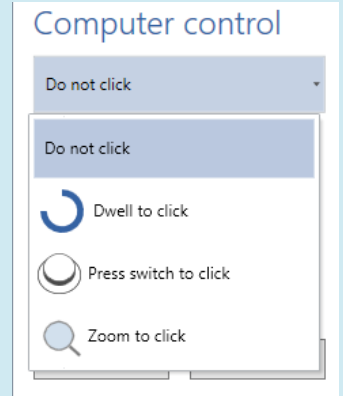
Settings

Mouse or head pointer

Computer control

Options for mouse activation when using Grid 3 to control other software or the Windows operating system.

Choose between no click, dwell to click, switch to click, or zoom to click. Further options will be available depending on the activation method.



Zoom to click

Zoom to click allows pinpoint accuracy of a small target by gradually zooming in. The level of magnification and zoom time can be adjusted as required.

This access method is also available for eye gaze users.

