

Remote editing

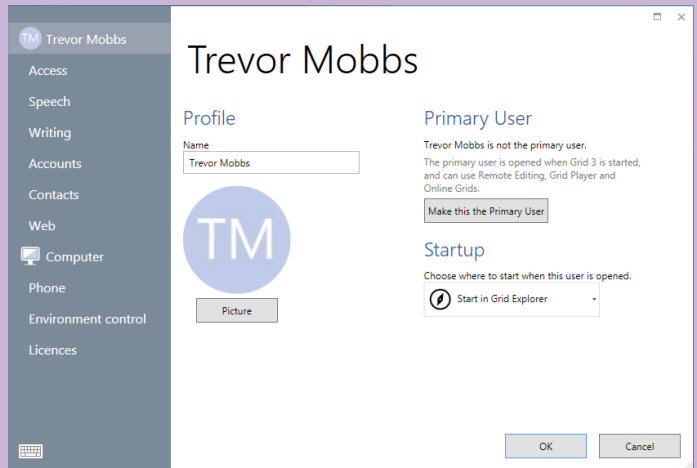


The Remote Editing function allows other people to edit your grid sets, without having to access your communication aid or computer. This means that parents and professionals can collaborate on developing grid sets – even at a distance.

Only grid sets belonging to the **Primary User** may be edited remotely. To check the current Primary User, in **Grid Explorer** click on the **Menu** bar, and **Users**. The Primary User is at the top of the list and has a green or blue highlight.

Changing the Primary User

Open the User, and go to **Settings**. Click on the user name at the top of the settings categories, then **Make this the Primary User** and **Yes** to confirm.

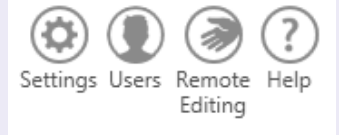


Giving permission for remote editing

Now that everything is configured, just share the email address and password of your Smartbox account with anyone who you would like to give permission to edit your grid sets. Any changes made will synchronize automatically the next time the grid set is opened. (You will need to be online for updates to take place).

Editing grid sets remotely

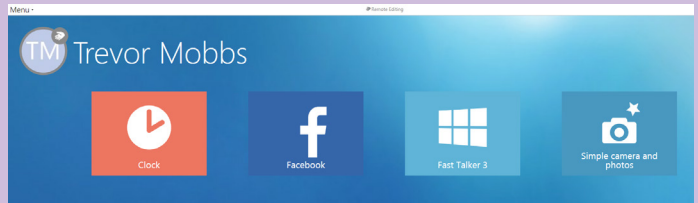
To edit another user's grid set remotely, in Grid Explorer, click on **Menu** then **Remote Editing**.



Signing in

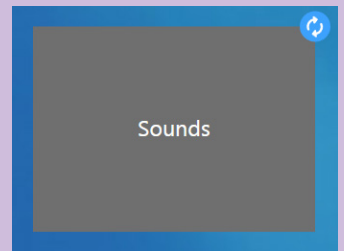
Enter the email address and password of the Smartbox account for the user whose grids you wish to edit, and **Sign In**.

Grid Explorer will now display the grid sets for that user, and 'Remote Editing' will appear on the Menu bar at the top. The profile picture for the user will show a remote editing icon.



Making changes

You can view and edit any of the grid sets in the normal way. When you leave edit mode, and save changes, you will see a synchronization icon next to the user and any grid sets which are being updated.



★ Tip

You don't have to purchase Grid 3 to be a remote editor. Simply download the free trial, and the remote editing functionality will remain even after the trial expires.

Smartbox

thinksmartbox.com