

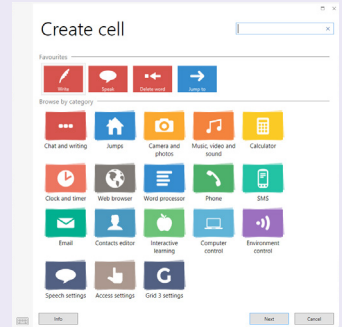
Introducing commands



Commands are the actions that are taken when a cell is selected by a user. It is easy to add a sequence of commands to a cell which can perform a wide variety of functions.

The list of commands available can be viewed by clicking on **Create Cell**.

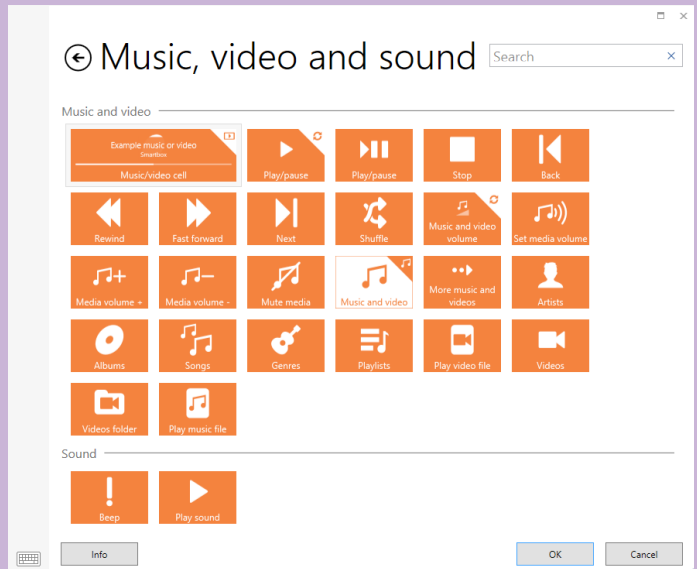
Commands are grouped into categories to help you find what you are looking for.



Click on a category, and **Next** to view the commands available.

★ Tip

If you aren't sure which category your command is in, you can use the search box in the top right.

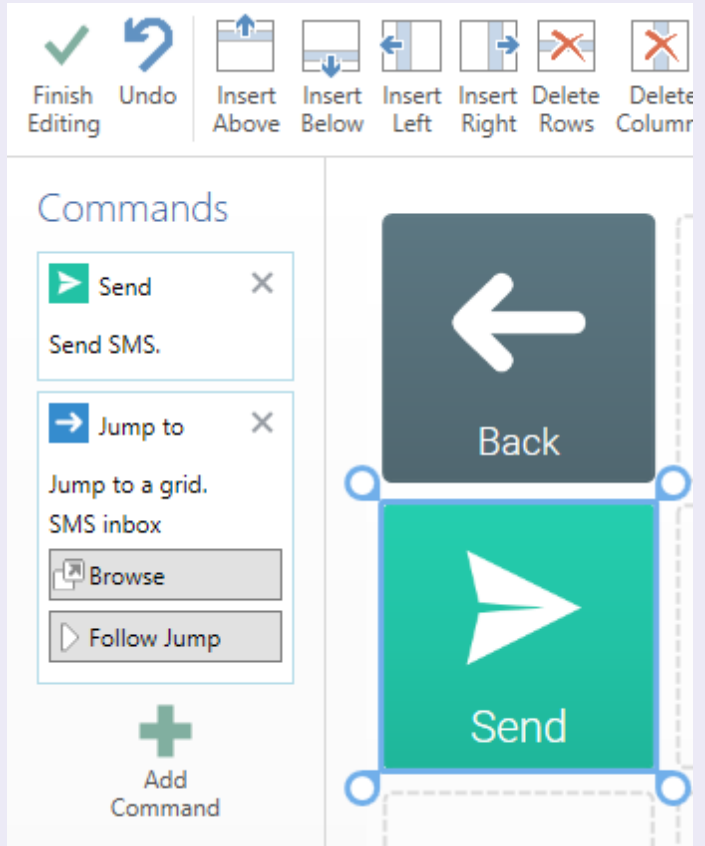


Adding commands

You can add more commands to a cell by clicking on **Add Command**.

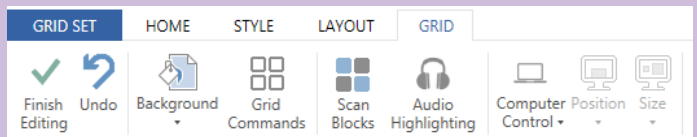
The order in which the commands are executed can be changed by dragging and releasing a command up or down the list.

A command can be deleted by clicking on the X in the top right.



★ Tip

You can also add commands to a grid, which will be executed every time it is opened. Click on the **Grid** tab, and then **Grid Commands**.



Smartbox

thinksmartbox.com