

Changing a picture

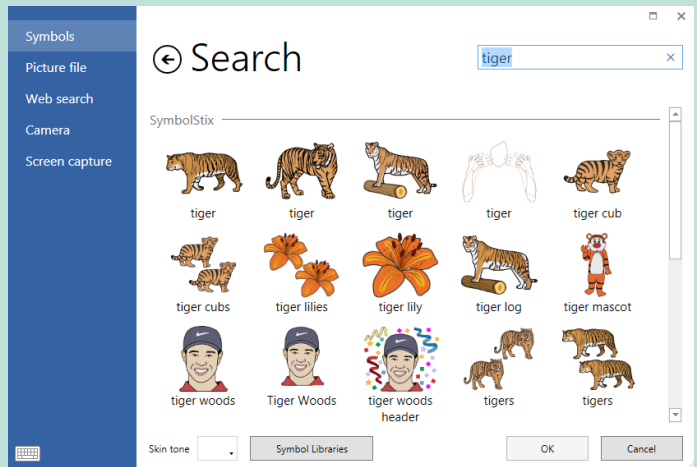
While in Edit mode, select a cell by clicking on it. Now you can either click on an alternative symbol in the menu bar or **Find Picture** for more options.



Use the search box to find symbols in libraries.

Tip

You can add or remove symbol sets by clicking **Symbol Libraries**.



Picture File

Navigate to the folder on your computer where the picture is stored. Select it and click **Open**.

Web Search

Search for an image direct from the internet. Use the search box to find a picture, select it, and click **OK**.

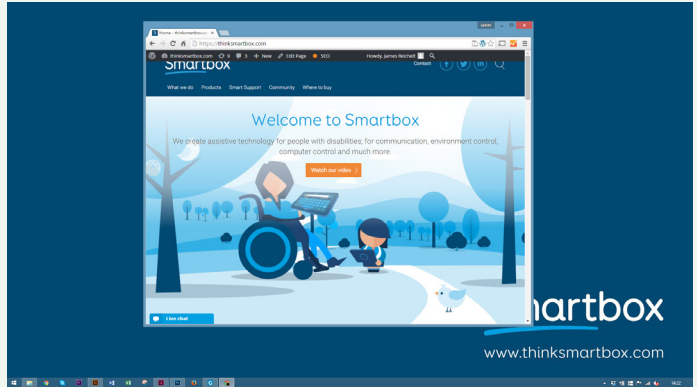
Camera

Use your webcam to take a picture. Click **Camera** to see a live feed then simply click **Capture** to take a picture.

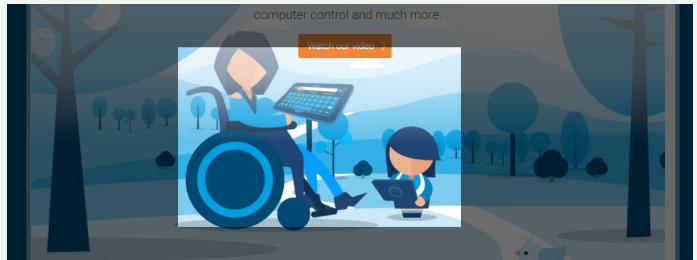
Screen capture

This option allows you to use anything which appears on your screen as a picture for your cell.

Minimize Grid 3 and make sure the desired image is visible on screen, then switch back to Grid 3.



Select **Screen Capture**. Your screen will gray out. **Click and drag** to select the area of the screen you want to capture.



Your screen grab will automatically be set as the cell's image. You can also re-use screen captures by navigating back to **Screen Capture**.

