

M220

Standard 3D Printer

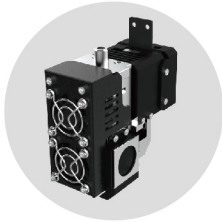
Build Volume
220 x 220 x 220mm



MOMENT
Catch the moment, fill your ideas

M220

3D printer made for everyone



A perfect, medium-class 3D printer

- Wholesome 22cm³ print volume
- Rugged design and durable parts improve functionality and minimize vibrations
- Effortless leveling adjustment system makes for a stress-free user experience
- Innovative nozzle designed to minimize clog and smoothen filament flow



Multi-material, multi-purpose

- Capable of printing a variety of materials (PLA, ABS, Nylon, PC, etc.) with a single nozzle
- Strong, durable materials enhances the possibilities of the 3D printer
- Preset parameters for each materials means less time for preparation



Simple, easy, perfect

- Equipped with full-color touch screen and WiFi for comfortable user experience
- Filament sensor and temperature stabilization safely completes lengthy prints without fail

Product Dimensions	460mm x 454mm x 597mm
Product Weight	28KG
Product Materials	Aluminium, PVC
Shipping Weight	38KG
Input	AC 100-240V, 4.0A(50~60Hz)
Output	DC 24V / 13.4A
Maximum Power	320 Watt
Print Technology	Fused Filament Fabrication (FFF)
Print Volume	220mm(L) x 220mm(W) x 220mm(H)
Nozzle Diameter	0.4mm
Filament Diameter	1.75mm
Print Speed	30~150mm/sec (full speed 300mm/sec)
Print Quality	0.05~0.3mm
Print Accuracy	12 micron in X,Y 0.625 micron in Z
Leveling	Moment Special Leveling System
Build Platform	Heat bed and glass (Up to 110°C)
Extruder	Single extruder (Up to 350°C)
Cooling system	Moment Special Cooling System
Filament materials	PLA / ABS / Nylon / PC / Flexible(TPU) / Wood / etc.
Operating Ambient Temperature	10C ~ 25C
Storage Temperature	0~ 38C
Software bundle	Full license Moment Simplify3D & Repetier Server
Connects	Wifi, Ethernet, USB Memory
LCD / Control	5 Inch Full color Touch Screen
Software Operating Systems	Minimum requirements Windows XP / Minimum requirements Mac OS X 10.6 Minimum requirements Ubuntu Linux 12.10 / OpenGL 2.0 capable system
Support File types	G-code, stl, obj