



**LOVE YOUR
HAIR AND IT
WILL LOVE
YOU BACK**





TABLE OF CONTENTS

03	Hair Types & Texture
04	The Essentials
08	Before You Dye
11	Hair Care Tips
12	Product Recommendations
13	Before Your Service
14	Prevent Tangling & Shedding
16	At-Home Habits
17	Storing Hair & Securing Wigs
Back	Our Contact Information

Hair Types & Textures



STRAIGHT

Recommended for sleek, straight styles that serve major glam with minor effort.



LOOSE WAVE

Waves with a flirty texture that can be worn naturally or smoothed out for a different look.



YAKI STRAIGHT

Matches the rhythm of your natural hair when it's been pressed straight or freshly relaxed. Your flat iron has officially been canceled.



WATER WAVE

On the hunt for carefree curls? Water Wave's 3A-3B coils are the answer.



KINKY STRAIGHT

Like a fresh blowout, Kinky Straight moves freely and gives a naturally flawless look. Want even more texture? Try flexi rods or wand curls.



DEEP WAVE

Classic curls that are full of body and bounce, Deep Wave's strands match textures 3C-4A.



BODY WAVE

The perfect hair for a quick switch-up, Body Wave can be worn straight or curled for more volume.



CURLY

The tightest curl pattern that we offer, Curly mimics 4A-4B textures and can be worn in its natural state or brushed out for maximum fullness.

The Essentials



SEAL

To prevent shedding, seal your wefts before you install. Use a weft-sealer like Fray Check to get the job done.



MOISTURIZE

Use a light leave-in conditioner as needed and a heat protectant when styling to keep your tresses hydrated.



DETANGLE

Starting at the bottom and working your way up, use a paddle brush or wide-tooth comb to keep your hair tangle-free.



CLEANSE

Keeping your hair clean and sans product buildup means your look will last! Co-wash your hair weekly and shampoo as needed.



WRAP

To retain moisture and prevent frizz, wrap hair with a silk or satin scarf before you catch some zzz's.

Co-Wash

THIS SIMPLE STEP CLEANSSES AND NOURISHES HAIR.



01.

SATURATE

Wet the hair and saturate with conditioner, leave on for 5-10 minutes.



02.

DETANGLE

Detangle with a wide-tooth comb, then rinse.



03.

AIR DRY

Leave hair to dry for 4-6 hours (or overnight) to completely dry.

WHAT'S CO-WASHING?

Co-washing is using your conditioner, instead of shampoo, to cleanse. The hair looks great out of the bag, but to see the true texture of the hair (and to further minimize tangling) co-wash!

The Keys

EVERY DAY:

Sleep with your hair in a silk or satin scarf, or on a pillowcase of the same materials.

EVERY WEEK

Shampoo and Condition your hair, and ensure it dries completely.

EVERY 2-3 WEEKS

See your stylist for a Maintenance Service.

EVERY 1.5 MONTHS

Come back for your next install.

Golden Rule: Be Gentle With Your Bundles

It's tempting to think your bundles, extensions, and wigs can handle more wear and tear than the hair growing out of your scalp. The hard truth is that if you want it to last, you need to treat them like you would your natural hair.

To keep hair looking fresh, tangle-free and intact for future installs, you need to give it a little TLC. Twist it up at night, comb it out, and moisturize it. Follow these tips so your hair can be reinstalled multiple times without dryness and other problematic signs of damage.

Consider this Care Guide your go-to resource for maintenance tips, and remember our Customer Service Representatives are here to help.



What To Do Before You Dye

NO FURTHER LIFT

Just a reminder that only our virgin Natural Black hair can be lifted to color 27, or light blonde. Hair that comes in other colors has been professionally pre-colored for your convenience and should not be bleached or lifted further.

TAKE CALCULATED RISKS

If you're confident enough to switch up your color by yourself, we see you! Make sure you're following the proper steps to keep your hair healthy and protected during any chemical process.

AVOID BOX COLOR

Don't even think about using box dye. Even though it may seem like a quick fix, opt for professional color products from the beauty supply store. Box colors often come with too-strong developers and aren't a proper one-size-fits all-solution.

WATCH THE CLOCK

When it comes to color services, processing time always matters. Follow the manufacturer's instructions carefully to ensure that your bundles don't fall victim to overprocessing and unnecessary chemical damage.

GOING, GOING, BLONDE

Not only are our Blonde Wigs the perfect way to go instantly platinum, they also serve as an amazing base for custom-colored looks. Just be sure to use deposit-only color or toner, and don't overprocess. Proper care and upkeep will keep your blonde dreams alive and well.

MOISTURIZE, THEN MOISTURIZE AGAIN

Hair that has been chemically altered needs extra care to stay hydrated. Use leave-in sprays and deep conditioning treatments that are safe for color-treated hair when needed. If your hair is feeling dry and depleted, try adding a cuticle sealer to your routine.





Care Tips by Texture

	CARE TIPS & MAINTENANCE	PRODUCTS & TOOLS TO USE	WHAT NOT TO DO
STRAIGHT	Co-wash once per week or as needed Deep condition once per month Limit the overuse of leave-in products - less is more	Use heat protectant with any hot tools Paddle brush	Avoid heavy leave-ins and oils
KINKY	Co-wash once per week or as needed Deep condition once per month	Use flexi rods or a curling wand to enhance texture	Limit the overuse of heat and let natural texture shine
WAVY	Co-wash once per week or as needed, more often to limit product buildup Deep condition once per month	Stick to light leave-ins and curl enhancers Wide-tooth comb or paddle brush	Watch the temperature so that you don't cause damage. Always apply a heat protectant with hot tools.
CURLY	Co-wash 1-2 times per week Detangle while wet with fingers or wide-tooth comb Deep condition 1-2 times per month	Alcohol-free mousse, styling gel, or curl defining creams	Limit the use of hot tools to maintain curl pattern

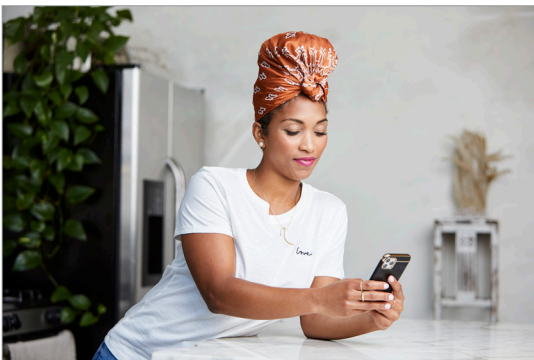
Recommended Products

	STRAIGHT	KINKY	WAVY	CURLY
SHAMPOO	<p>Carol's Daughter <i>Black Vanilla Shampoo</i></p> <p>Girl + Hair <i>Sulfate-Free Cleanser</i></p>	<p>Carol's Daughter <i>Black Vanilla Shampoo</i></p> <p>Girl + Hair <i>Sulfate-Free Cleanser</i></p>	<p>Jane Carter Solution <i>Moisture Nourishing Shampoo</i></p> <p>SheaMoisture <i>Moisture Retention Shampoo</i></p>	<p>Jane Carter Solution <i>Moisture Nourishing Shampoo</i></p> <p>SheaMoisture <i>Moisture Retention Shampoo</i></p>
CO-WASH & CONDITIONER	<p>SheaMoisture <i>Coconut & Hibiscus Co-Wash</i></p>	<p>Carol's Daughter <i>Hair Milk Cleansing Conditioner</i></p>	<p>Jane Carter Solution <i>Curl Drench Cleansing Co-Wash</i></p>	<p>Jane Carter Solution <i>Curl Drench Cleansing Co-Wash</i></p>
DEEP CONDITIONER	<p>Carol's Daughter <i>Moisture & Shine Deep Conditioning Hair Smoothie</i></p>	<p>Carol's Daughter <i>Moisture & Shine Deep Conditioning Hair Smoothie</i></p>	<p>Alikay Naturals <i>Honey & Sage Deep Conditioner</i></p>	<p>Girl + Hair <i>Curl Cloud Ultimate Hydrating Hair Mask.</i></p>
LEAVE-IN	<p>Girl + Hair <i>Nourishing Leave-In Conditioner</i></p>	<p>Girl + Hair <i>Nourishing Leave-In Conditioner</i></p>	<p>Alikay Naturals <i>Lemongrass Leave-In Conditioner</i></p>	<p>Kinky-Curly <i>Knot Today Leave-In Detangler</i></p>
HEAT PROTECTANT	<p>The Doux <i>Weightless Shine Mist</i></p>	<p>The Doux <i>Weightless Shine Mist</i></p>	<p>OGX <i>Quick Drying Thermal Spray</i></p>	<p>OGX <i>Quick Drying Thermal Spray</i></p>
OIL	<p>SheaMoisture <i>100% Pure Argan Oil</i></p>	<p>SheaMoisture <i>100% Pure Argan Oil</i></p>	<p>OGX <i>Renewing Moroccan Argan Oil</i></p>	<p>OGX <i>Renewing Moroccan Argan Oil</i></p>
MOUSSE & STYLERS	<p>Jane Carter Solution <i>Frizz Free Styling Smoother</i></p>	<p>Jane Carter Solution <i>Frizz Free Styling Smoother</i></p>	<p>The Doux <i>Mousse Def Texture Foam</i></p>	<p>The Doux <i>Mousse Def Texture Foam</i></p>

Before Your Services

SALON SERVICES

The Concierge Team will reach out via text or email to help schedule your service. They will cover what's included, and connect you to your stylist by group text.



REINSTALLS

Before your Reinstall service appointment, shampoo, condition and dry your bundles so they're ready to be sewn-in.



How to Prevent Shedding

Let's be real - hair sheds, just like the hair on your head!

But, it can be avoided with proper care. Use these tried-and-true tips to prevent shedding.

PRE-INSTALL

Before your install, use a comb or gently run your fingers through the hair to let it breathe. You may see a few strands come out, but don't worry, this step helps prevent excess shedding.

DURING INSTALL

Follow your stylist's instructions for maintaining your extensions. Opting for a DIY? Whether you're installing your bundles to your own head or to a wig cap, make sure to sew around the wefts, not through them.

POST-INSTALL

Be gentle when styling and detangling your hair. The more TLC your extensions receive, the longer your strands will last.

SEALING WEFTS

One way to reduce shedding is to seal your wefts. To do this, squeeze a sealant sparingly along the weft of your bundle and let it dry completely. Avoid getting sealant on the hair by hanging your wefts or gently placing them on a plastic surface. Once dry, they are ready to be sewn-in.

How to Prevent Tangling

Follow along for our tips and tricks to avoid tangles, plus learn the best ways to remove knots.

To stop tangles before they start, use a lightweight, water-based product. We suggest using a conditioning product that's made for adding moisture.

To detangle your hair, spritz it with water and comb it out in sections, starting from the ends of your hair and working your way up.

KEEP HEAT TO A MINIMUM

When styling your hair with hot tools, keep the temperature between 350-375° to prevent causing damage. Styling your hair frequently on high heat is likely to wreak havoc.

BRUSHES & TOOLS

Wide-tooth combs, paddle brushes, and Denman-style brushes are your best bet for bundles and wigs. If you decide to use your fingers, always be gentle and split hair into sections to cut down on detangling time.

PRODUCTS TO USE

Our Care Tips By Texture grid lists out all our top recommendations. Overall, try to prevent or reduce product buildup by using light to medium hold formulas. Rich, heavy formulas are best suited for our curliest textures. If you have more questions, contact our Customer Service team by phone

1 (855) 287-6868 or text **34649**.

At-Home Habits



BEFORE BED, DO THIS: PINEAPPLE YOUR HAIR

- ◆ Gather your hair above your head
- ◆ Secure your hair with a stretchy hair tie — silk or satin are best
- ◆ Wrap a scarf around the perimeter of your head. This helps preserve your style.
- ◆ Get some beauty sleep

IN THE MORNING, DO THIS

For straight and pre-colored virgin hair, stick to lightweight products over heavy creams. Create texture with products and tools.

HOW TO BLEND YOUR LEAVE-OUT

Keep your sew-in looking newer longer by wrapping your hair at night.

STYLING & CUSTOMIZATION FOR FRONTS AND CLOSURES

Before you lay your frontal or closure, you want a solid foundation. This is an important first step to guarantee a flat install. Remember, you can always book your Mayvonn stylist for a braid down and any customization service. To style and customize your closure or frontal yourself, check out our YouTube channel and blog for expert advice.

TO CLEANSE YOUR LACE, DO THIS

Take an empty spray bottle and fill it with lukewarm water, then spray the lace until it is saturated. Next, add a tiny bit of shampoo to the spray bottle, and apply the shampoo mixture onto the lace and hair — we suggest using a sulfate-free shampoo. Then, gently rinse it off with a low-pressure stream of cool water.

Everything In Its Place

BEFORE SECURING YOUR WIG AT HOME

Mayvenn Stylists are on-hand to install your wig, but if you choose to do it yourself, prepping your hairline is key. Use rubbing alcohol and a cotton pad to lightly cleanse the surface of your skin. This ensures the glue or gel will dry properly, and oil won't interfere.

LACE ADHESIVE RECOMMENDATIONS

There are a few options when it comes to wig adhesive, and how long you're wearing it matters. If you're wearing your wig for a day, try Got2b Glued Freeze Spray. To secure your unit longer, use a stronger adhesive, like Bold Hold Extreme Creme. Just be sure to follow the manufacturer's directions and use the accompanying Remover for best results. To secure your wig without adhesive, using a Wig Grip is always a solid choice.

WIG & BUNDLE STORAGE

Once you receive your wig, store it properly to keep it looking new for as long as possible. One option is to store it on a mannequin head: brush the wig and set it on the head until the next time you wear it. Another option is to use the packaging the hair arrived in to store and protect the unit.

HEADBAND WIG MAINTENANCE

Headband Wigs are an ideal quick protective style option, but they still need to be treated with care. Use the same co-washing and cleansing methods that you would on your bundles, and gently hand wash the attached headband with a gentle soap. Lay your headband wig flat or on a mannequin head to dry properly.

REMOVING CLIP-INS

When you're ready to let your hair down, you've got to know how to take out your clip-ins. For easy removal, divide your hair into sections and lightly detangle your hair. At the root of your hair, gently unsnap the clip-in. Store them in a silk or satin bag between wears.

REPLACING TAPE-INS

Tape-in extensions are meant to add length and fullness to your hair. They lie so flat that it's easy to forget that you have to replace them. When they begin to feel loose and there's space between the tape tabs and your roots, it's time to replace them. Typically this is around 4-8 weeks, depending on how quickly your natural hair grows and how well the extensions have been maintained.





NEED MORE MAINTENANCE AND HAIR CARE ASSISTANCE?

Whether you're ready to book a salon appointment, want some extra help laying your baby hairs, or you're still figuring out how to cut your own ear tabs, we've got you covered - literally. Check out our YouTube channel, blog, and social channels, or reach out to our Customer Service team to get all of your questions answered. We're just a call, text, or email away.

CALL: (855) 287-6868

TEXT: 34649

EMAIL: help@mayvenn.com

MAYVENN

Have any questions or need haircare tips?
Visit mayvenn.com or call +1(855) 287-6868

FOLLOW US



blog.mayvenn.com



[/mayvennhair](https://www.facebook.com/mayvennhair)



[@mayvennhair](https://twitter.com/mayvennhair)



[@mayvennhair](https://www.instagram.com/mayvennhair)



[/mayvennhair](https://www.youtube.com/mayvennhair)



[/mayvennhair](https://www.pinterest.com/mayvennhair)

Show Us Your Crown!
Tag @Mayvennhair
To Be Featured

ALLOW US TO INTRODUCE OURSELVES

Mayvenn was founded because we believe that you deserve access to quality products, amazing stylists, and empowerment along your hair journey. We are a proudly Black-owned brand with humble beginnings from Oakland, California, and we are so grateful for your support as we grow. We get you because we are you. Thank you for joining the movement.

