

Wadi Side Table - Stone

Copyright © 2024 Bofred (Pty) Ltd



THE WADI SIDE TABLE TAKES MATERIAL INSPIRATION FROM RUGGED RAVINES AND IS MADE FROM LIMESTONE OR TRAVERTINE WITH A DURABLE CLEAR SEALANT.

Product Dimensions

500 mm (H) x 450 mm (Diameter) x 30 mm (Thickness)

Weight: 25 kg

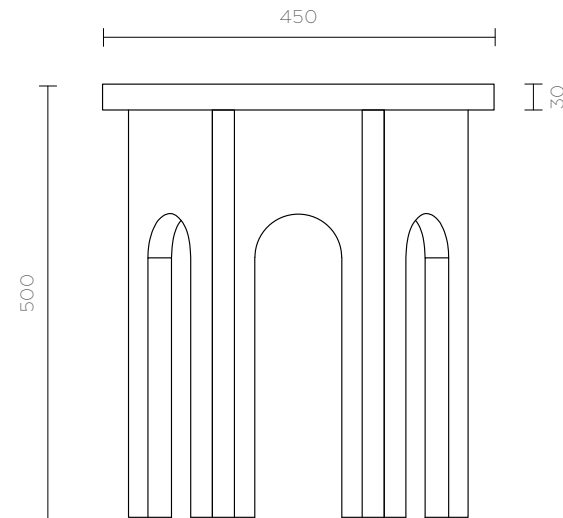
Material Shown

Limestone with a durable clear sealant

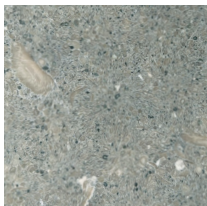
Material & Finish Options

Limestone / Travertine

Colours and weight of natural materials will vary



Limestone



Travertine



BOFRED

www.bofred.co.za | T. +27 72 629 4257 | E. info@bofred.co.za

Wadi Side Table - Stone

Copyright © 2024 Bofred (Pty) Ltd

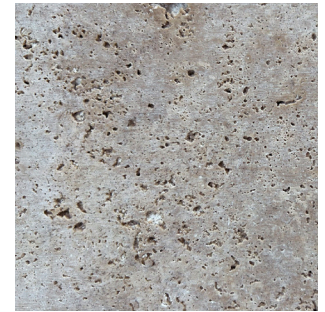
Material Shown: Limestone with a durable clear sealant



Limestone



Travertine



Colours and weight of natural materials will vary.

BOFRED

www.bofred.co.za | T. +27 72 629 4257 | E. info@bofred.co.za