

# Globalstar Sat-Fi™

SAT-FI APP USER GUIDE

WINDOWS



**TOLL FREE 1-888-989-8199**

1455 N. Dutton Suite A, Santa Rosa, CA 95401  
FAX 707-546-8198 • [info@remotesatellite.com](mailto:info@remotesatellite.com)  
[www.remotesatellite.com](http://www.remotesatellite.com)

This guide is based on the production version of the Globalstar Sat-Fi and Sat-Fi Apps. Software changes may have occurred after this printing.

Globalstar reserves the right to make changes in technical and product specifications without prior notice

Globalstar Inc.  
300 Holiday Square Blvd.  
Covington, LA 70433

Copyright© 2014 Globalstar® Incorporated.  
All rights reserved.

Globalstar® is a registered trademark of Globalstar Incorporated.

Sat-Fi™ is a registered trademark of Globalstar Incorporated.

Windows® is a registered trademark of Microsoft Incorporated.

All other trademarks and registered trademarks are properties of their respective owners.

Printed in the United States of America

# Table of Contents

<b>1. WELCOME</b> .....	<b>1</b>
<b>2. INSTALLING THE SAT-FI APP</b> .....	<b>2</b>
<b>3. ACTIVATING THE SAT-FI APPS</b> .....	<b>3</b>
SAT-FI DATA ACCESS VOUCHERS .....	3
NEW SAT-FI ACCOUNT.....	3
EXISTING SAT-FI ACCOUNT .....	5
<b>4. CONNECTING TO THE SAT-FI HOTSPOT</b> .....	<b>7</b>
<b>5. CONFIGURING THE SAT-FI NETWORK CONNECTION SETTINGS</b> .....	<b>8</b>
<b>6. COMPOSING &amp; SENDING EMAIL</b> .....	<b>10</b>
<b>7. RECEIVING EMAIL</b> .....	<b>14</b>
<b>8. INCREASING/DECREASING EMAIL LIMIT SIZE</b> .....	<b>15</b>
<b>9. SOCIAL MEDIA</b> .....	<b>17</b>
FACEBOOK .....	17
Setting Up Your Facebook Post-By-Email Address .....	17
Configuring Sat-Fi for Facebook .....	21
Sending a Facebook Post .....	22
<b>10. WEB BROWSING WITH COMPRESSION</b> .....	<b>24</b>
CONFIGURING SAT-FI FOR WEB BROWSING.....	24
WEB BROWSING.....	26

## 1. WELCOME

---

Today's wireless devices provide more options for staying in touch with friends and family than ever before. Unfortunately, they are dependent on wireless networks. Now you can take your computer beyond wireless with the world's most reliable satellite hotspot.

- Easily send and receive email via Wi-Fi enabled computer
- Conveniently use existing device contacts via the Sat-Fi App
- Fastest data speeds in the industry for sending and receiving email
- Designed for both vehicle/vessel-based and fixed locations
- Connect up to 8 users to Sat-Fi at one time
- Powered by the world's newest, most modern satellite network



Sat-Fi turns your computer device into a satellite enabled device

1. Download and install Sat-Fi for Windows to your computer
2. Connect your computer to the Sat-Fi via a Wi-Fi connection.
3. Sat-Fi links your computer to the Globalstar Satellite Network.
4. Your computer is now a connected for email and data.

## 2. INSTALLING THE SAT-FI APP

---

You will be able to send and receive email and data via the Sat-Fi App. The Sat-Fi App can be found on the Globalstar Sat-Fi Support Page.

Perform the following to download and install the Sat-Fi App for Windows:

- Step 1** On a Windows computer connected to the Internet, proceed to the [Globalstar Sat-Fi support Page](#) and download the Sat-Fi App for Windows.
- Step 2** A Welcome to Wireless Gateway ver 4.1 Setup Wizard screen will be displayed. Click on **Next>**.
- Step 3** A License Agreement screen will be displayed. Click on **I Agree**.
- Step 4** A Choose Components screen will be displayed. Leave the default settings and click on **Next>**.
- Step 5** A Choose Install Location screen will be displayed. Leave the default settings and click on **Next>**.
- Step 6** The **Next>** button will change to **Install**. Click on **Install**.
- Step 7** The program will begin installing. When it is finished the Welcome to the Aspell 0.50-3 Setup Wizard will be displayed. Click on **Next>**.
- Step 8** A License Agreement screen will be displayed. Click on **I Agree**.
- Step 9** A Choose Install Location screen will be displayed. Leave the default settings and click on **Install**.
- Step 10** The program will begin installing. When it is finished a Completing the Aspell 0.50-3 Setup Wizard will be displayed. Click on **Finish**.
- Step 11** A Completing the Wireless Gateway ver 3.86 Setup Wizard will be displayed.
  - Select **Reboot Now**
  - Click on **Finish**.
- Step 12** Your computer will now shutdown and reboot.

### 3. ACTIVATING THE SAT-FI APPS

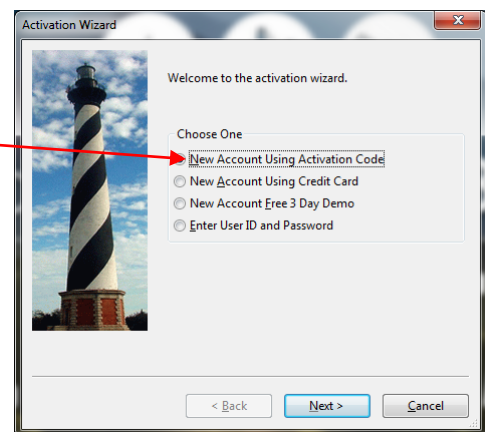
#### Sat-Fi Data Access Vouchers

You must have a Data Access Voucher to send and receive email & data via the Sat-Fi App. Your Sat-Fi Data Access Voucher was issued to you at the time of purchase from the dealer

#### New Sat-Fi Account

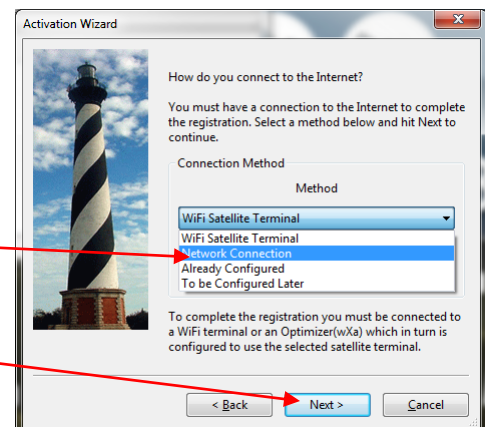
You must have a connection to the Internet to activate your Sat-Fi App for Windows. Perform the following to activate the Sat-Fi App for Windows:

- Step 1** After your computer has rebooted, the Activation Wizard will be displayed. Select **New Account Using Activation Code** and click on **Next>**.



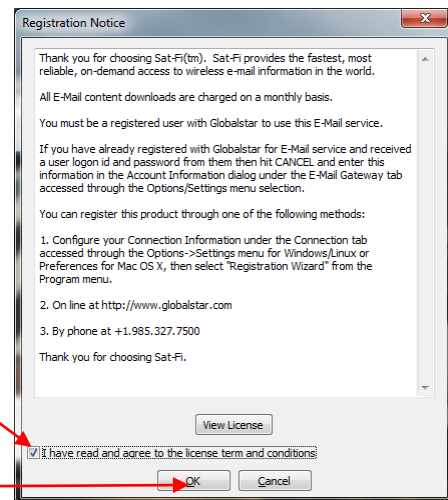
- Step 2** A how do you want to connect to the Internet screen will be displayed asking you “How do you want to connect to the Internet?” Perform the following:

- Click on the Connection Method drop-down arrow and select **Network Connection**
- Click on **Next>**



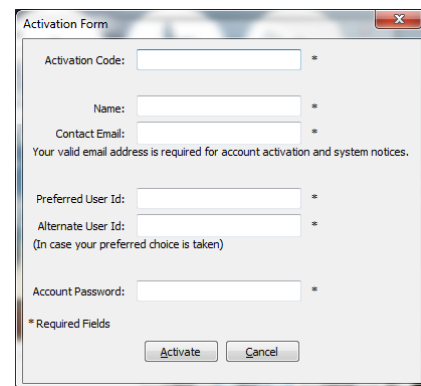
**Step 3** A Registration Notice screen will be displayed. Perform the following:

- Click on the ***I have read and agree to the license term and conditions*** checkbox
- Click on **OK**



**Step 4** An Activation Form screen will be displayed. Perform the following:

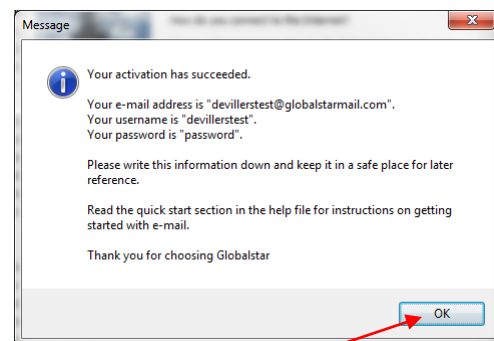
- In the **Activation Code** field, enter your Sat-Fi Data Access Voucher Number
- In the **Name** field, enter your first and last name
- In the **Contact Email** field, enter your contact email address
- In the **Preferred User Id** field, enter the username you would like to login with (username must be between 3 and 16 characters)
- In the **Alternate User Id** field, enter another username just in case your preferred choice has been taken (username must be between 3 and 16 characters)
- In the **Account Password** field, enter the password you would like to login with (password must be between 6 and 16 characters)
- Click on **Activate**



**Step 5** A Your activation has succeeded message will be displayed with the following information:

- Your email address (example: jsmith@globalstarmail.com)
- Your username (example: jsmith)
- Your password (example: GI0bal\*)

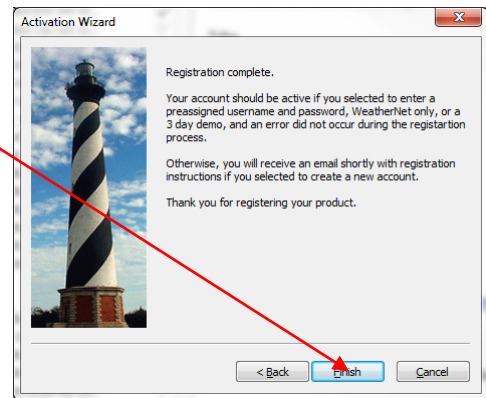
Additionally, you will receive an email (delivered to your contact email address) with this product registration information.



**Step 6** Click on **OK**.

**Step 7** A Registration Complete screen will be displayed. Click on **Finish**.

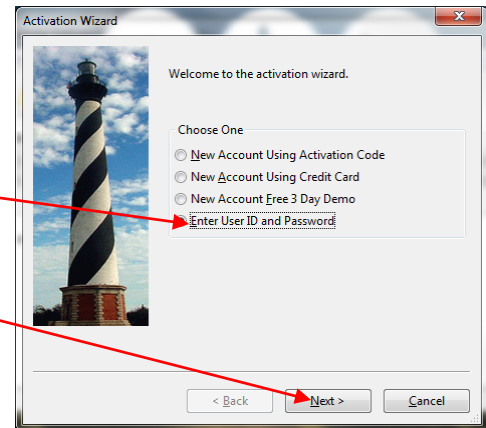
**Note:** It may take up to 20 minutes to activate in the system.



### Existing Sat-Fi Account

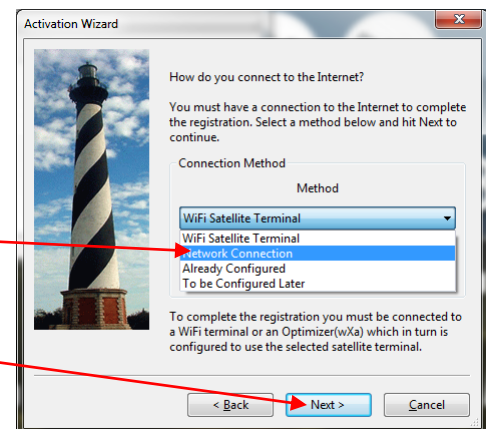
You must have a connection to the Internet to complete the registration of your Sat-Fi App for Windows. If you have an existing Sat-Fi account on a smartphone or other wireless device, you can login using your account information. Perform the following:

**Step 1** After your computer has rebooted, the Activation Wizard will be displayed. Select **Enter User ID and Password** and click on **Next>**.



**Step 2** A screen will be displayed asking you “How do you want to connect to the Internet?” Perform the following:

- Click on the Connection Method drop-down arrow and select **Network Connection**
- Click on **Next>**





**Step 3** An Account Information screen will be displayed. Perform the following:

- In the **Real Full Name** field, enter your first and last name
- In **Assigned User Name** field, enter the user name you selected when activating the Sat-Fi App
- In the **Password** field, enter the password you selected when activating the Sat-Fi App
- Click the **OK** button.

**Step 4** A Registration Complete screen will be displayed. Click on **Finish**.

## 4. CONNECTING TO THE SAT-FI HOTSPOT

Perform the following to connect your computer to the Sat-Fi hot spot:

**Step 1** Turn on the Sat-Fi unit.

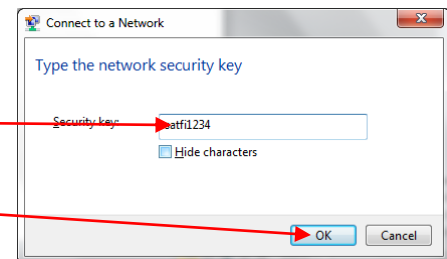
**Step 2** On your computer, open the Network Sharing Center and view the Wi-Fi connections that are available.

**Step 3** Select **SatFi<XXXXXX>** (<XXXXXX> is a unique identifier for that specific Sat-Fi Unit), and click on **Connect**.

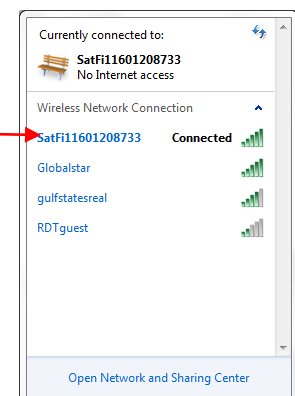


**Step 4** The Connect to a Network dialog will be displayed. Perform the following:

- In the **Security Key** field, enter the following: **satfi1234**
- Click on **OK**



**Step 5** The Connection dialog will appear displaying your computer is **Connected** Sat-Fi hotspot.



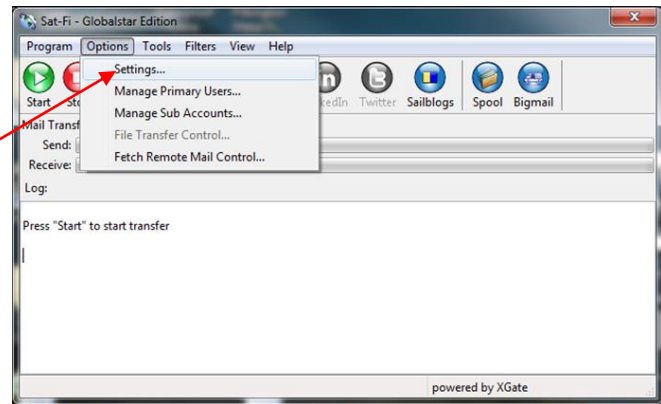
## 5. CONFIGURING THE SAT-FI NETWORK CONNECTION SETTINGS

Sat-Fi for Windows defaults to a Sat-Fi connection, but you can access your Sat-Fi email either through a Sat-Fi connection or through a regular Internet connection from your home or office.

Perform the following to change your Sat-Fi network connection settings:

**Step 1** On your computer open Sat-Fi for Windows, and the Sat-Fi screen will be displayed.

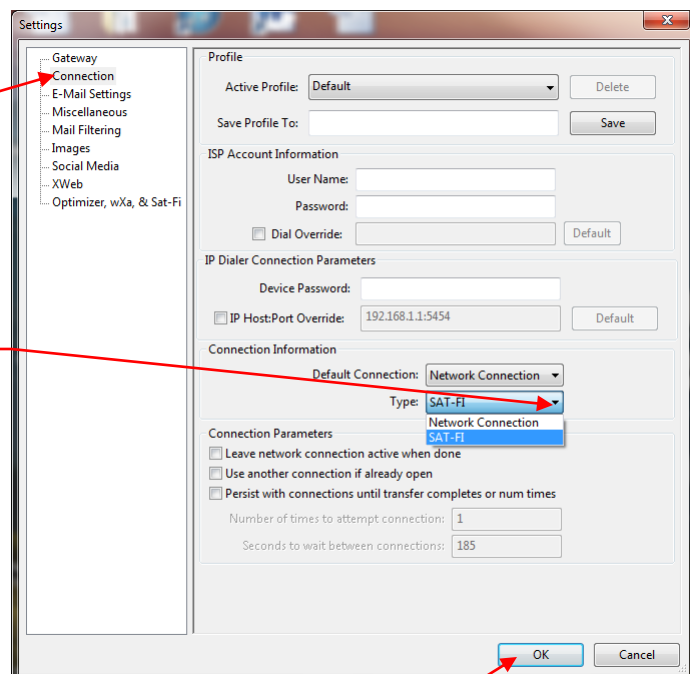
**Step 2** On the Main menu, select **Options > Settings...**



**Step 3** The Settings screen will be displayed. In the left pane, click on **Connection**.

**Step 4** In the Connection Information section, click on the **Type** drop-down arrow and select one of the following:

- **SAT-FI** – This is the default setting and is required to send/receive email & data over the Sat-Fi
- **Network Connection** – Select this setting to send/receive email & data over an Internet connection from your home or office

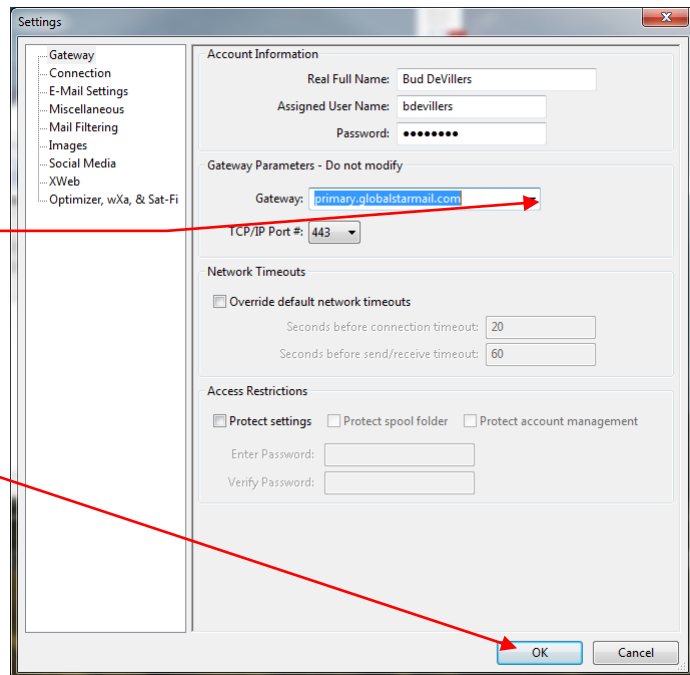


**Step 5** When finished, click **OK**.

**Step 6** On the Settings screen, in the left-pane, click on **Gateway**.

**Step 7** In the Gateway Parameters section, click on the **Gateway** drop-down arrow and select:  
***primary.globalstarmail.com.***

**Step 7** Click on **OK**.



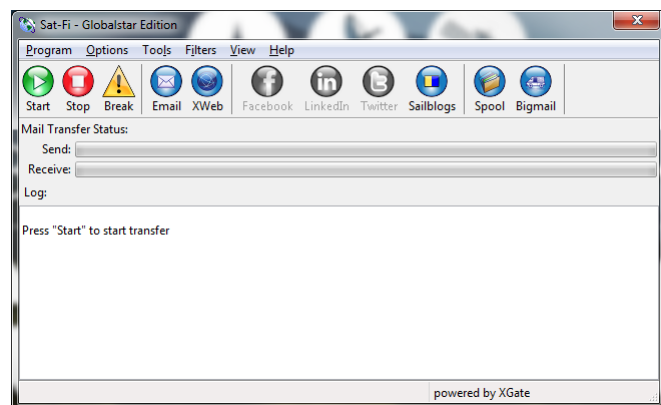
## 6. COMPOSING & SENDING EMAIL

To maximize the benefits of Sat-Fi, you will create email and read email offline. You can create and send one email at a time or create multiple emails and send them all at once. Your Sat-Fi for Windows must be registered and activated to send/receive email.

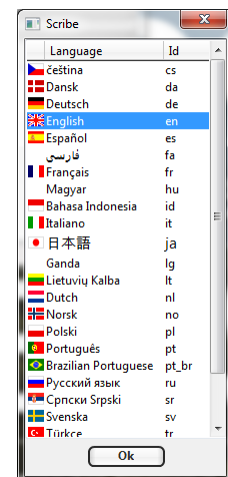
Perform the following steps to compose and send email:

**Step 1** On your computer, ensure you are connected to the Sat-Fi hotspot. Default Password: **satfi1234**.

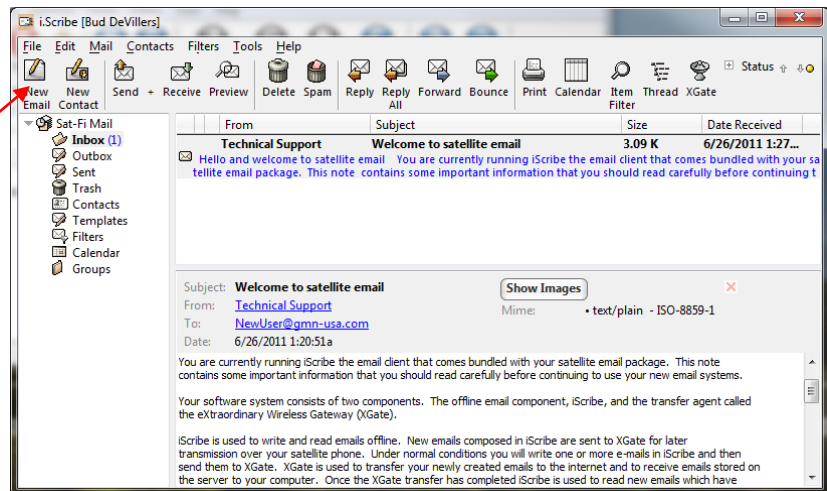
**Step 2** Open Sat-Fi for Windows and the Sat-Fi Main Screen will be displayed. On the toolbar select



**Step 3** The first time you select Email a Language screen will be displayed. Select the appropriate language and click **OK**.



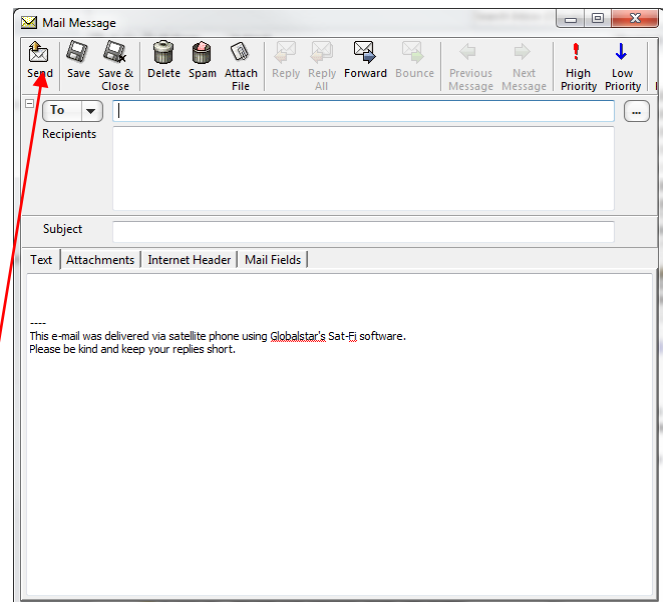
**Step 4** The iScribe window will be displayed. Click on **New Email** to create and compose email.



**Step 5** A Mail Message screen will be displayed. Perform the following:

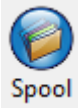
- In the **To** field, enter a recipient Email address
- In the **Subject** field, enter the subject of the message
- In the **Message** field, enter your message
- Click on **Attach File** to add attachments (attached files can be viewed by clicking on the Attachments tab)

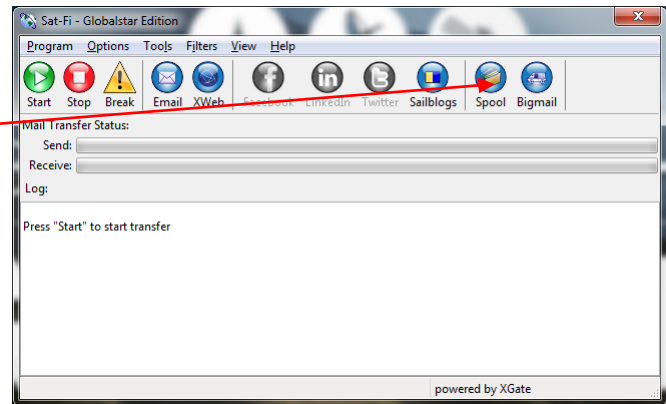
**Step 6** When finished click on **Send**. Your message will not be sent, but placed in the Spool folder.



**Step 7** Exit out of the iScribe window.

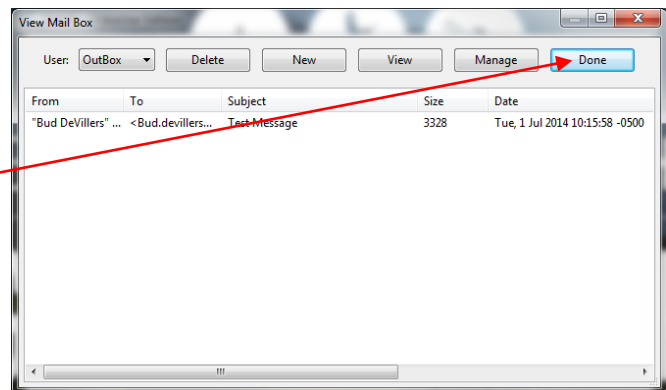
**Step 8** The Sat-Fi screen will appear.

Click on  .



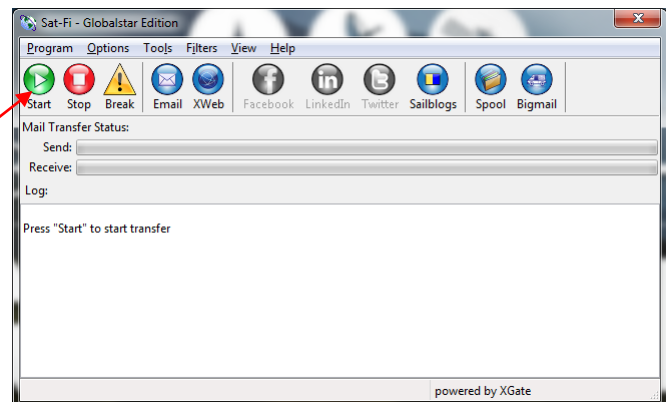
**Step 9** The View Mail Box screen with the email(s) you created in Step 5 will be displayed.

**Step 10** Click on **Done**.

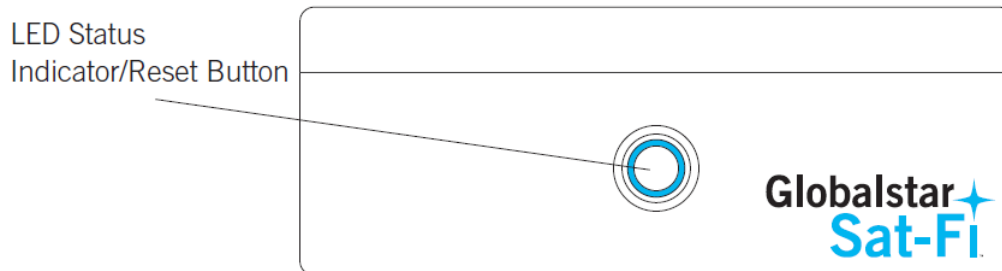


**Step 11** The Sat-Fi screen will appear. To send your email(s), click on

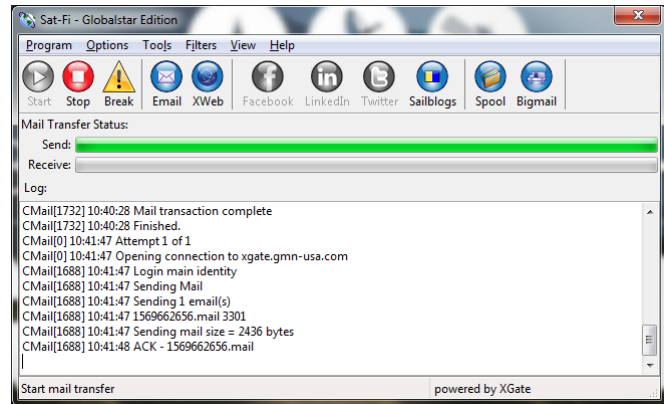
 .



**Step 12** The LED Status Indicator will start blinking (Slow Blink) indicating that your data session is being initiated. Within a few seconds your email will be sent and any email waiting to be received will be delivered.



**Step 13** The Mail Transfer Status bar will also turn green showing the transfer progress and the connection information will be displayed in the Log section.



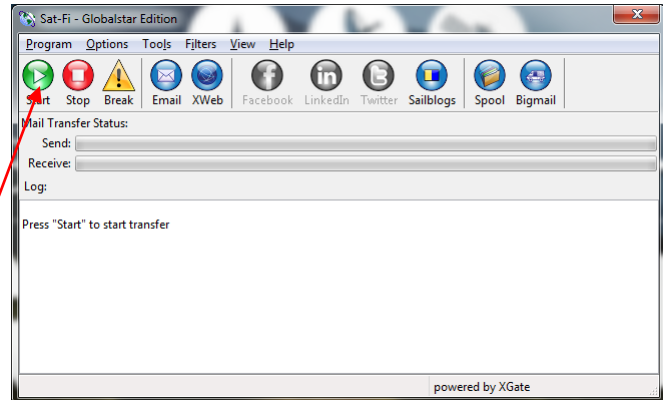


## 7. RECEIVING EMAIL

Perform the following steps to connect to the Sat-Fi mail server and receive email:

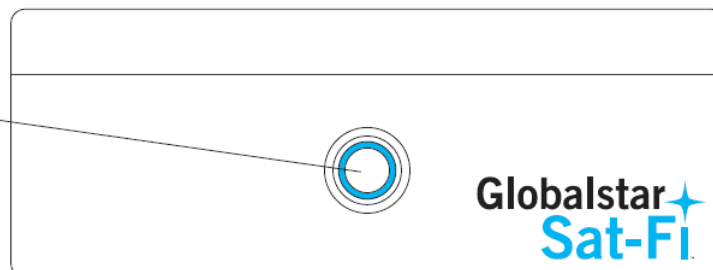
**Step 1** On your computer, ensure you are connected to the Sat-Fi hotspot. Default Password: **satfi1234**.

**Step 2** The Sat-Fi screen will appear. To check to see if you have any email to be received, click on

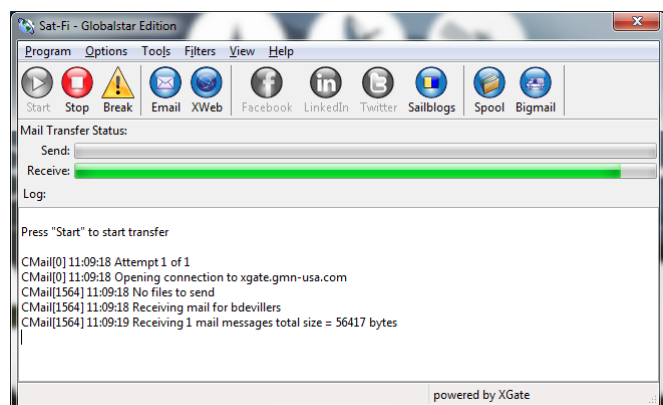


**Step 3** The LED Status Indicator will start blinking (Slow Blink) indicating that your data session is being initiated. Within a few seconds any email waiting to be received will be delivered.

LED Status  
Indicator/Reset Button



**Step 4** The Mail Transfer Status bar will also turn green showing the transfer progress and the connection information will be displayed in the Log section.

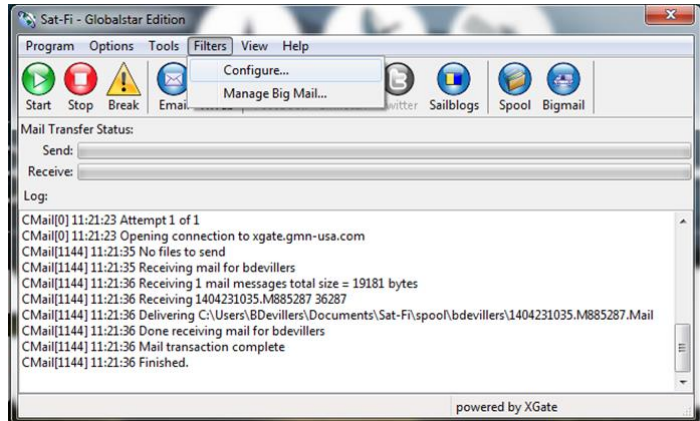


## 8. INCREASING/DECREASING EMAIL LIMIT SIZE

The default inbound and email message size is 50kb and outbound email message size is 250kb. With the default settings, incoming email equal to or less than 50kb will be downloaded to your Inbox whenever you receive email. Any incoming email greater than 50kb will be held on the server and reported to you in the Big Mail folder. Any outgoing email greater than 250kb will trigger a rejection email message that will appear in your Inbox.

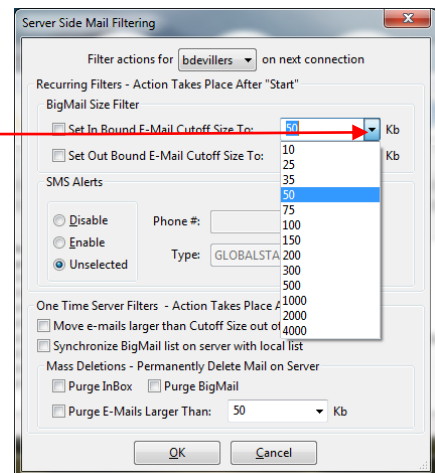
Inbound and Outbound email sizes can be increased or decreased by performing the following:

**Step 1** On the Sat-Fi screen, select **Filters > Configure...**



**Step 2** The Server Side Mail Filtering screen will be displayed.

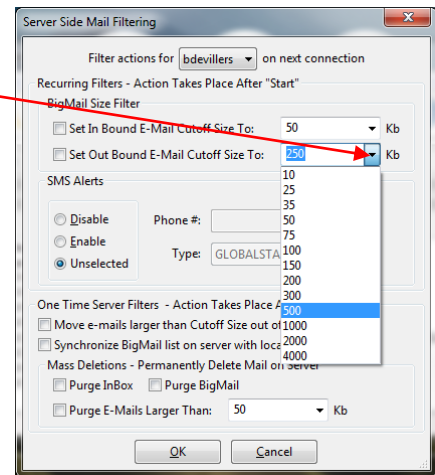
Click on the **Set In Bound E-Mail Cutoff Size To** drop-down arrow and select the message size limit you wish to send.



**Step 3** Click on the **Set Out Bound E-Mail Cutoff Size To** drop-down arrow and select the message size limit you wish to receive.

**Step 4** When finished changing the Inbound and Outbound message sizes, click on **OK**.

**NOTE:** The size adjustment will occur on the next data connection and you will receive a confirmation email on the following connection.



## 9. SOCIAL MEDIA

### Facebook

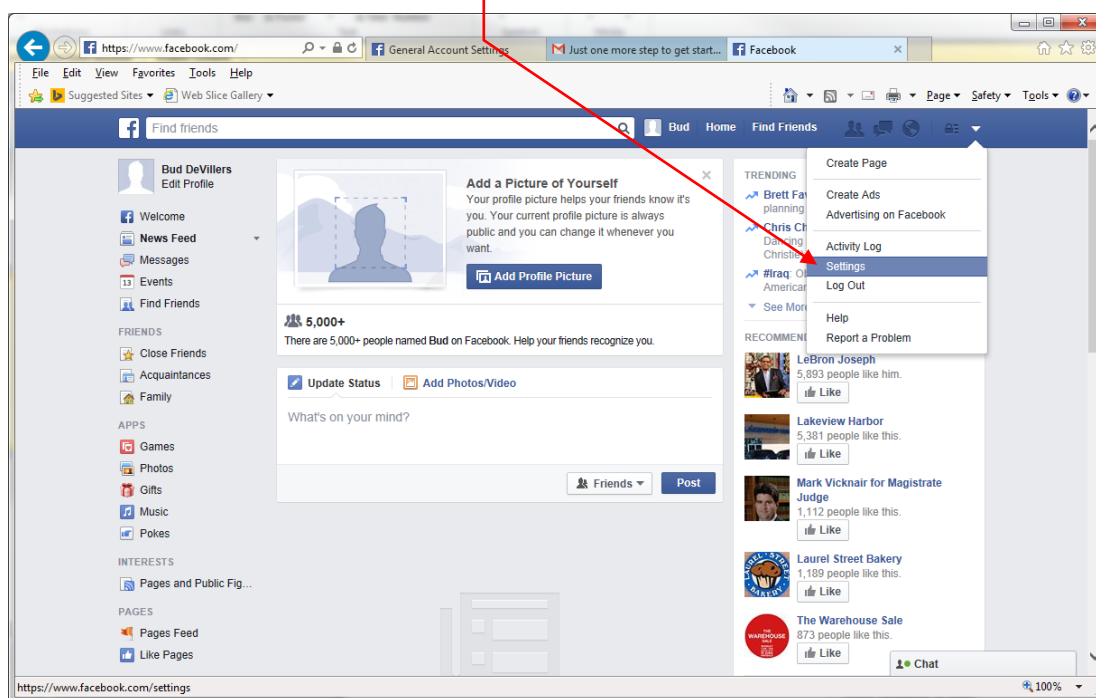
Sat-Fi for Windows allows you to post pictures and captions to Facebook. A Facebook Post-By Email Address is required to send Facebook post through Sat-Fi. If you already have a Facebook account that includes a Post-By-Email Address, proceed to Configuring the Sat-Fi App for Facebook.

### Setting Up Your Facebook Post-By-Email Address

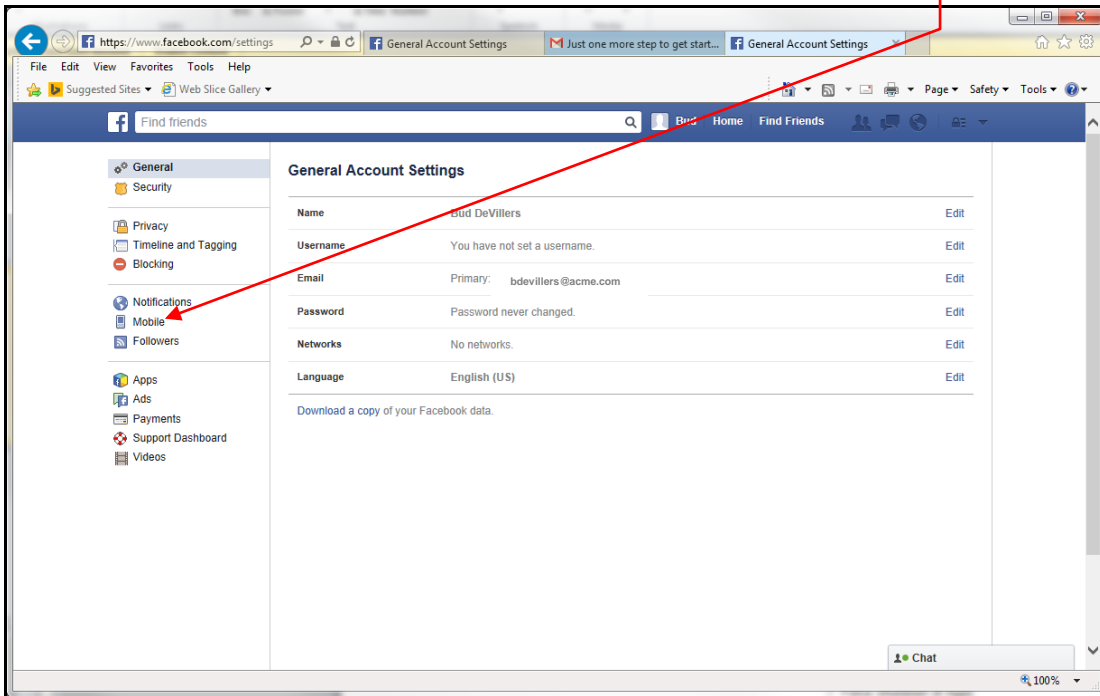
If you do not have a Post-By-Email Address assigned to you by Facebook perform the following:

**Step 1** On a computer connected to the Internet, login to your Facebook account.

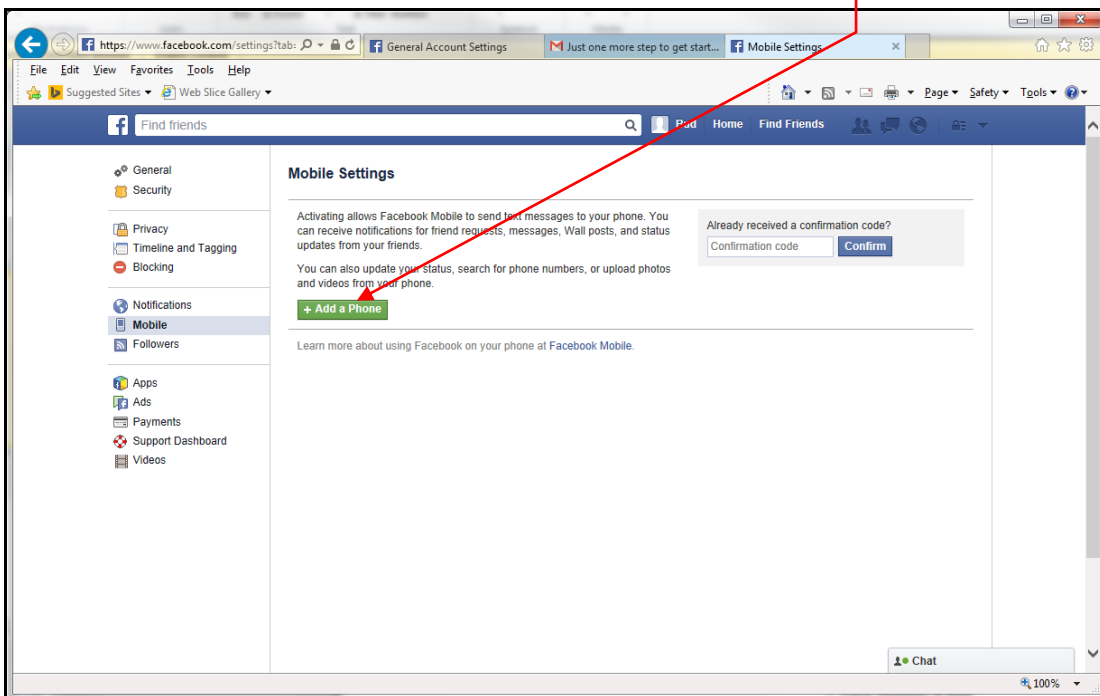
**Step 2** On the Home Page select **Settings** from the drop-down menu.



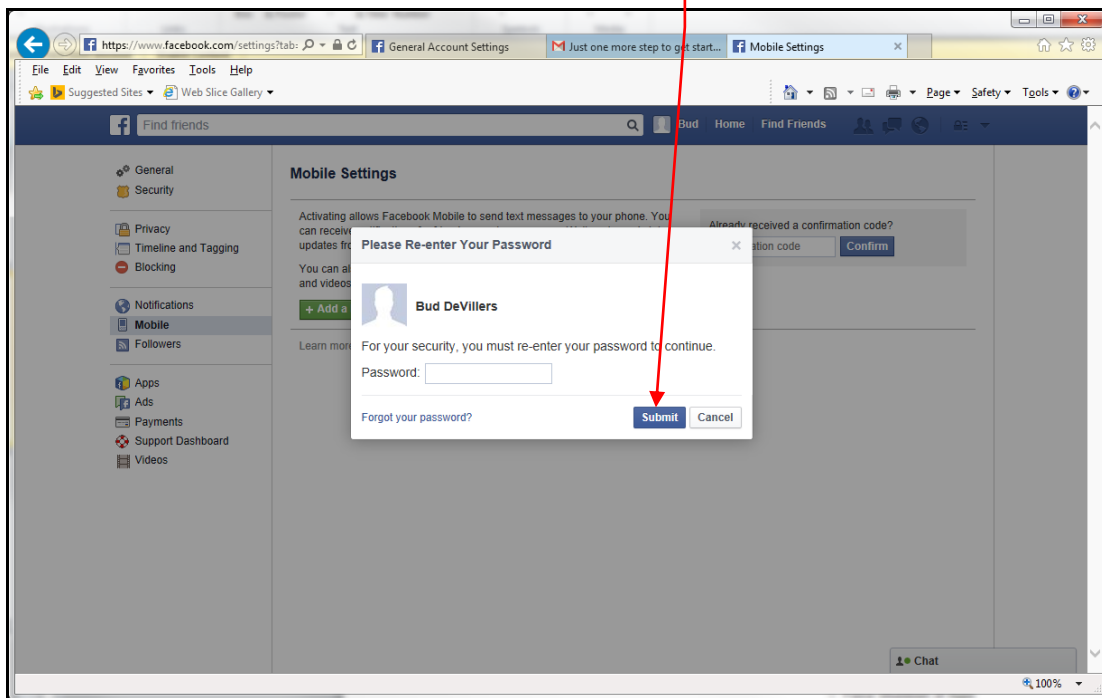
**Step 3** The General Accounts Settings screen will be displayed. Click on **Mobile**.



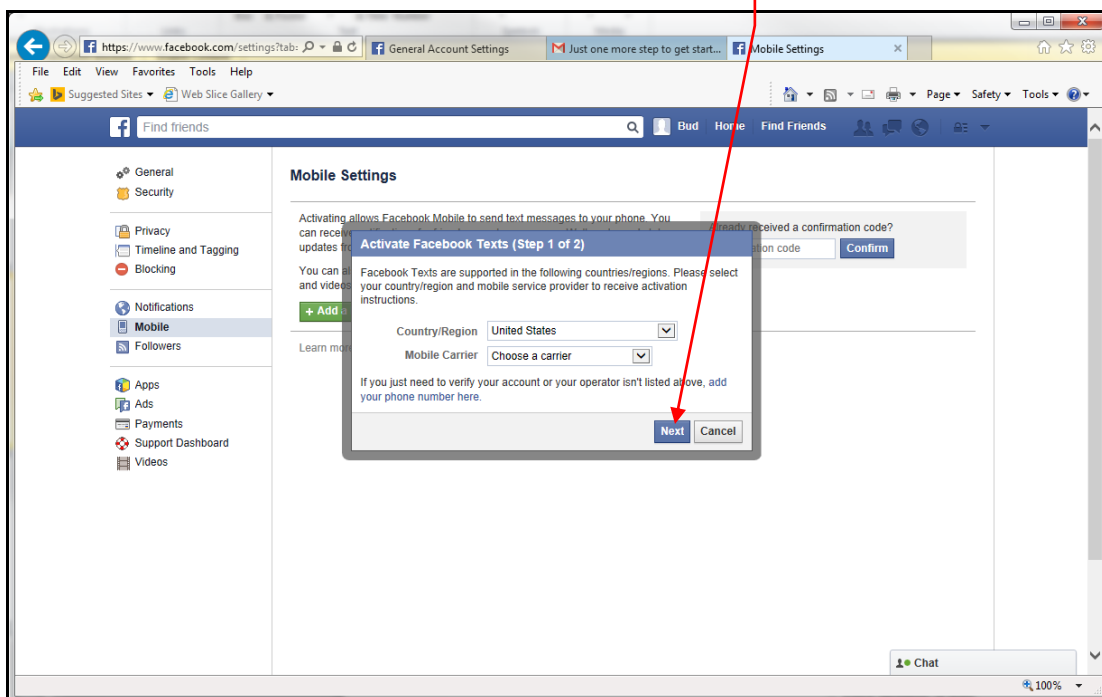
**Step 4** The Mobile Settings screen will be displayed. Click on **+ Add a Phone**.



**Step 5** A Please Re-enter Your Password screen will be displayed. In the Password field enter your Facebook password and then click on **Submit**.

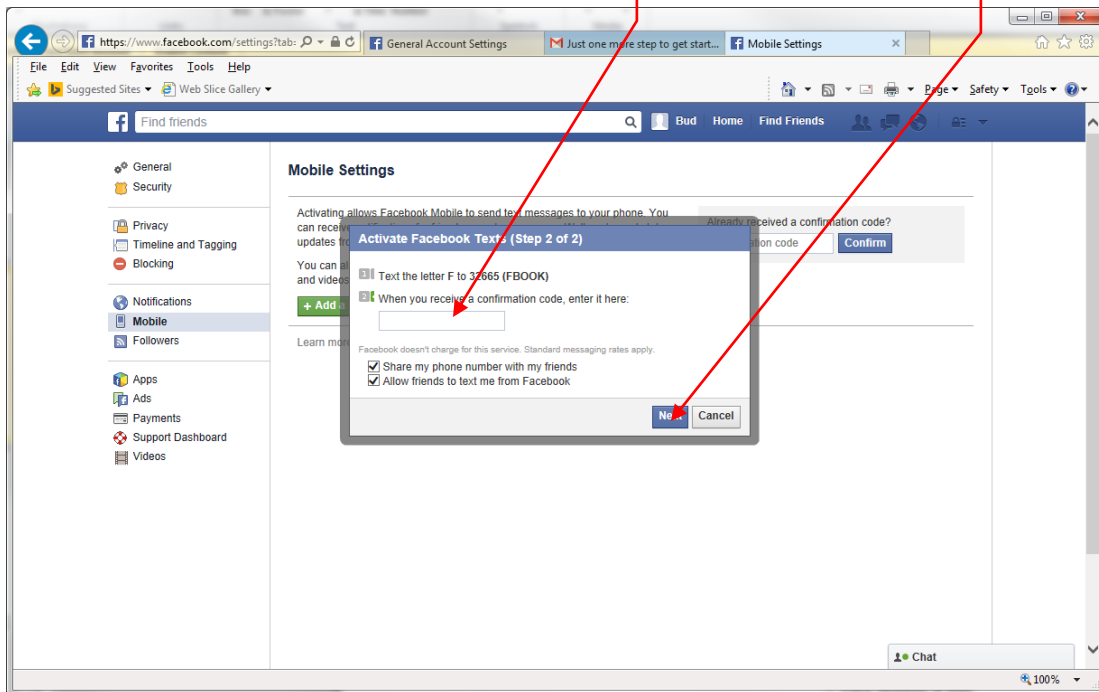


**Step 6** The Activate Facebook Texts (Step 1 of 2) screen will be displayed. Select your Country/Region and your Mobile Carrier, then click **Next**.

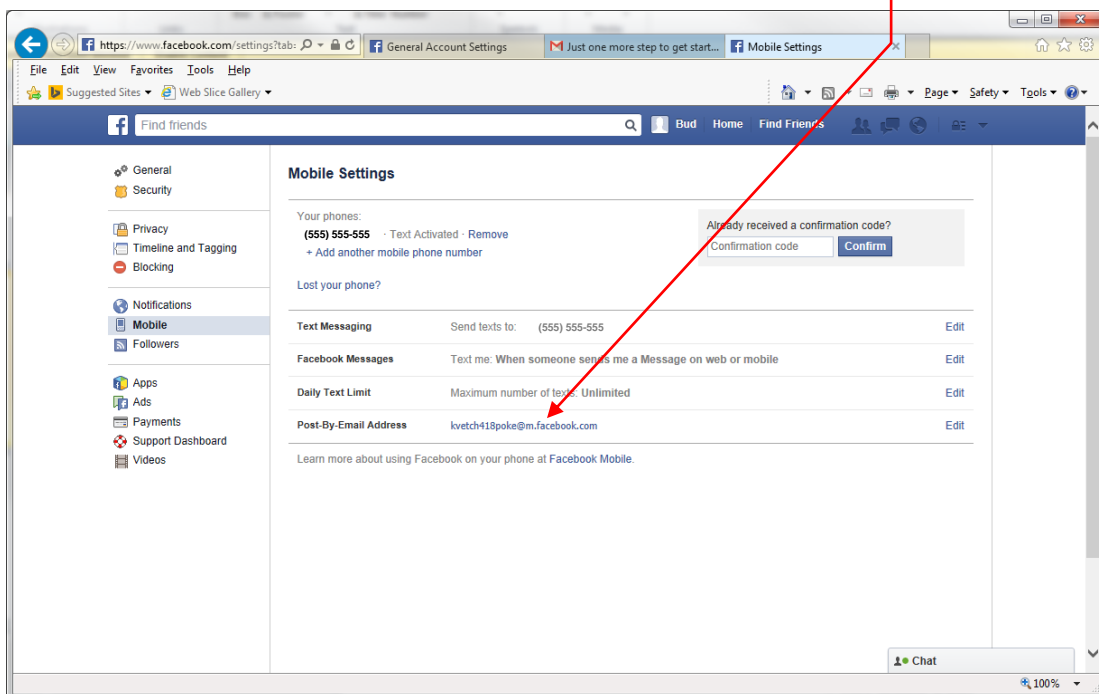


**Step 7** The Activate Facebook Texts (Step 2 of 2) screen will be displayed. On your iPhone (not connected to Sat-Fi) text **F** to the following number **32665**.

**Step 8** Within a few minutes you should receive a text from Facebook with a confirmation code. Enter that confirmation code in the **Confirmation Code** field and click **Next**.



**Step 9** The Mobile Settings screen will appear displaying your **Post-By-Email Address**.

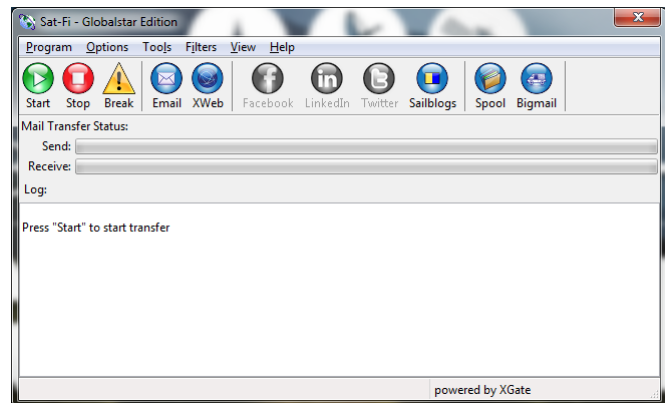


## Configuring Sat-Fi for Facebook

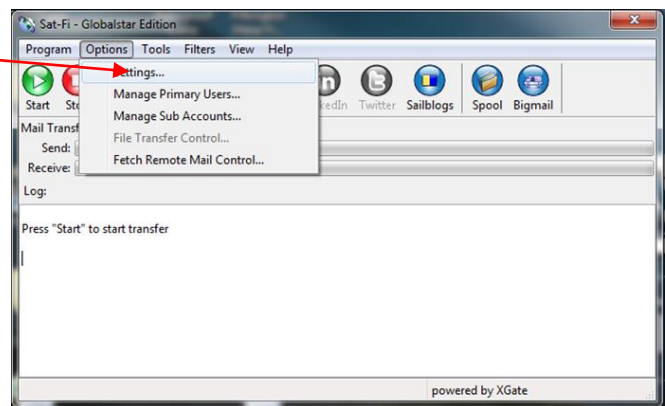
Perform the following to configure Sat-Fi for Facebook posting:

**Step 1** On your computer, turn on your Wi-Fi connection and connect to the Sat-Fi network. Default Password: **satfi1234**.

**Step 2** On your computer open Sat-Fi for Windows, and the Sat-Fi screen will be displayed. (The Facebook button will be inactive and grayed out)



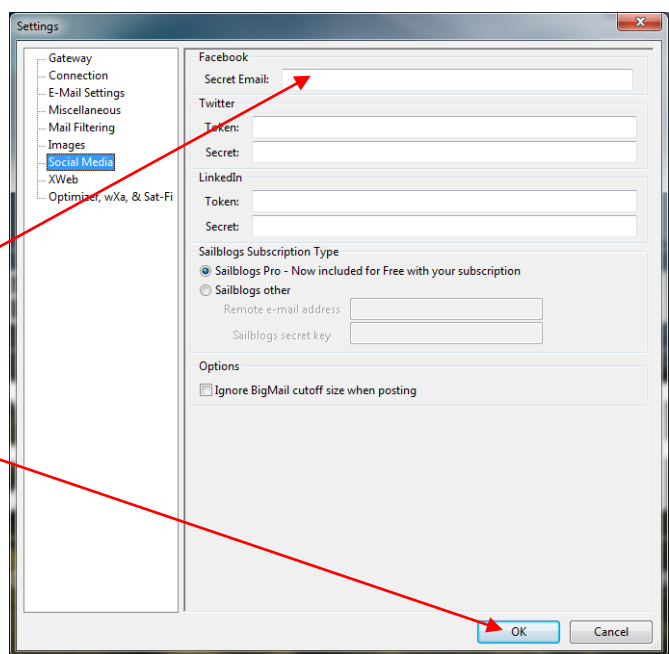
**Step 3** On the Main menu, select **Options > Settings...**



**Step 4** In the left-hand pane select **Social Media**.

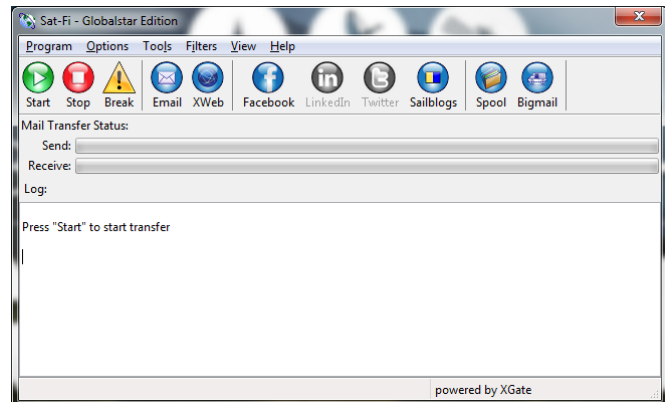
The Social Media screen will be displayed. In the Facebook section perform the following:

- In the **Secret Email** field, enter your Post-By-Email Address (This is assigned to you by Facebook to perform mobile postings)
- To go back to the main screen, click **OK**.





**Step 5** The Facebook button will now be blue and is active.

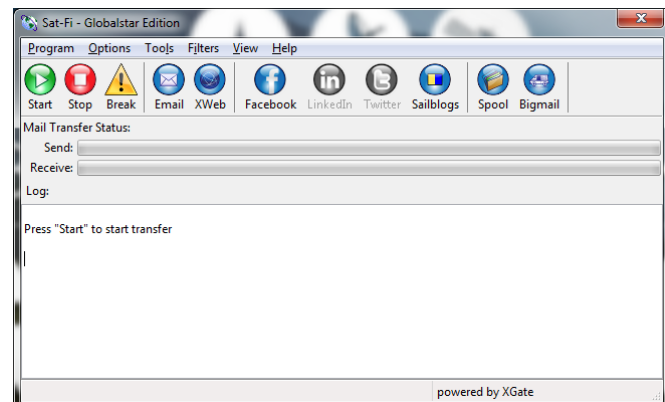


## Sending a Facebook Post

Perform the following to post your pictures and captions on Facebook through Sat-Fi for Windows:

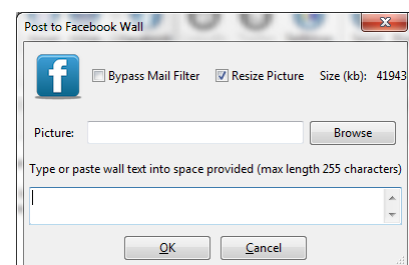
**Step 1** On your computer, turn on your Wi-Fi connection and connect to the Sat-Fi network. Default Password: **satfi1234**.

**Step 2** Open Sat-Fi for Windows and click on

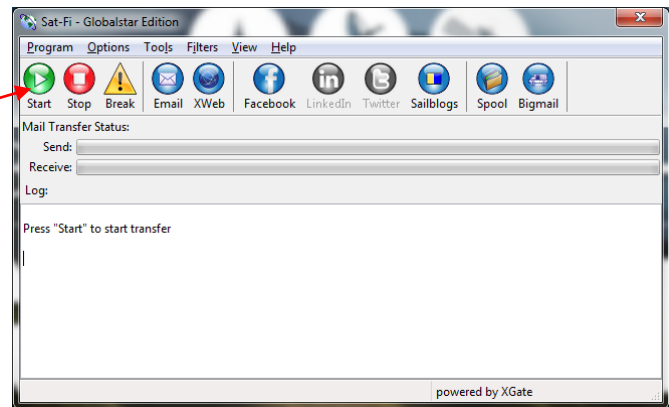


**Step 3** The Post to Facebook Wall screen will be displayed. Perform the following:

- To add a picture, click on the **Browse** button and select your picture to post
- In the **Text** field, enter the caption you wish to include with your picture
- When finished, click **OK**



**Step 4** The Sat-Fi main screen will be displayed.



**Step 5** The Sat-Fi LED Status Indicator will start blinking (Slow Blink) indicating that a data session is being initiated. Within a few seconds your Facebook post will be sent and any email waiting to be received will be delivered.

## 10. WEB BROWSING WITH COMPRESSION

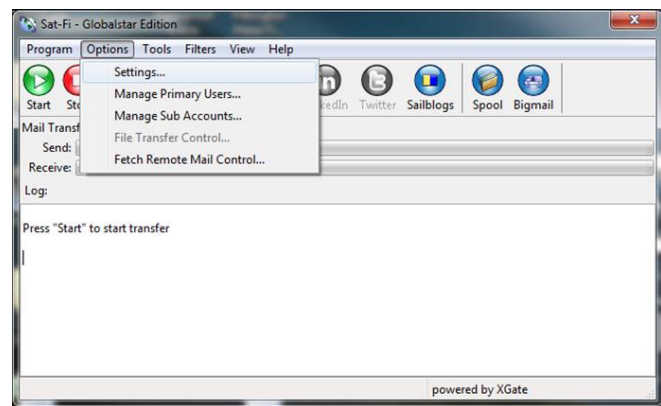
Sat-Fi employs a web compression agent that allows you to browse the Internet. Web content is compressed, background images are stripped, pop-up ads are removed, advertisements are stripped, animations are removed, and images are compressed.

Sat-Fi can reduce the time it takes to download typical web pages up to a factor of 10x. However, even with compression, Internet browsing will be slow.

### Configuring SAT-Fi for Web Browsing

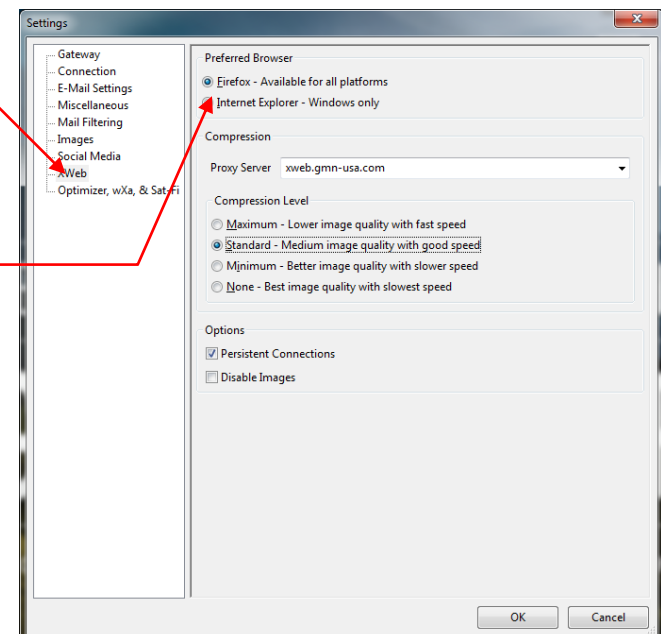
Perform the following to configure Sat-Fi for web browsing:

- Step 1** On the Sat-Fi screen, select **Options > Settings...**



- Step 2** In the left-hand pane, select **Xweb**

The web browsing configuration screen will be displayed.



- Step 3** In the Preferred Browser section select the appropriate browser.

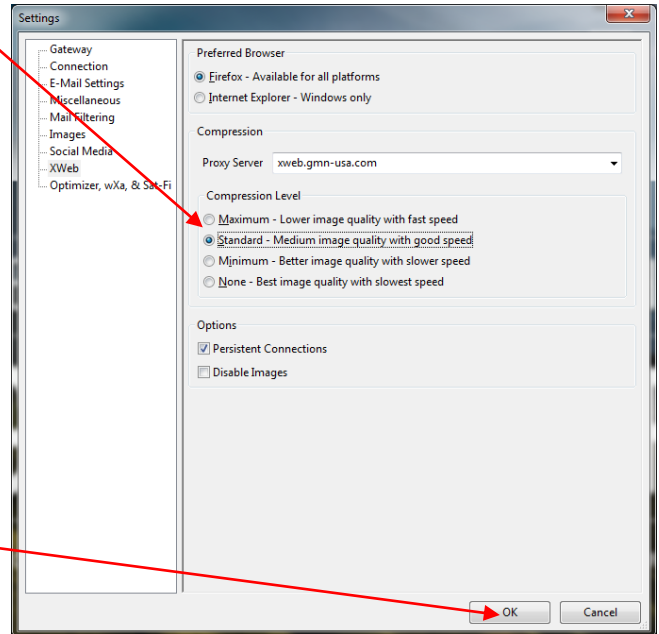
- **Firefox** – This is the default web browser and available for
- **Internet Explorer** – Medium image quality with good speed

**NOTE:** Sat-Fi defaults to Firefox as its web browser.

**Step 4** In the Compression Level section select the appropriate compression level; the higher the compression level, the lower the quality.

- **Maximum** – Low image quality with fast speed
- **Standard** – Medium image quality with good speed
- **Minimum** – Better image quality with slower speed
- **None** – Best image quality with slowest speed

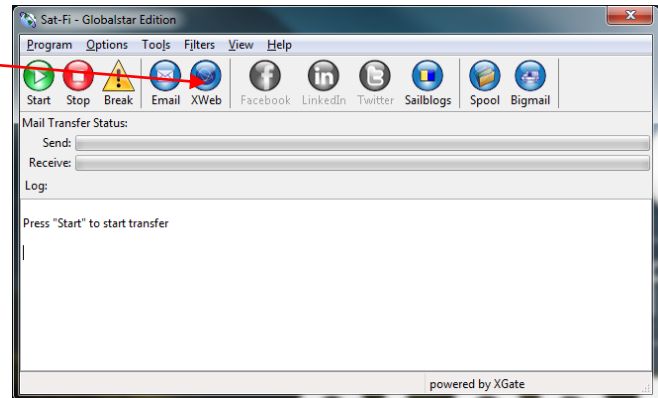
**Step 5** When finished click **OK**.



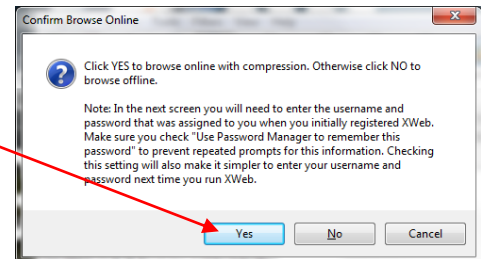
## Web Browsing

Perform the following to configure Sat-Fi for web browsing:

**Step 1** On the Sat-Fi screen,  
Click on

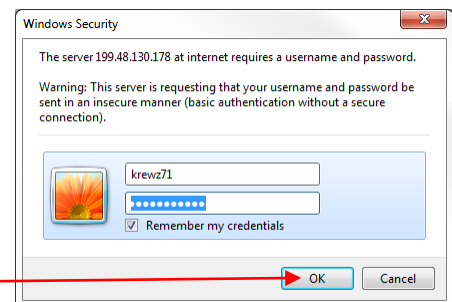


**Step 2** A Confirm Browse Online window will be displayed, click on **Yes**.



**Step 3** A Security dialog box will be displayed. Perform the following:

- In the **User Name** field, enter the user name you selected when activating the Sat-Fi App
- In the **Password** field, enter the password you selected when activating the Sat-Fi App
- Click **OK**.



**Step 4** Your Web Browser will be displayed and you can now browse the web.