

Table of Contents

Overview2
 Contacts2
 Preface2
 Product Features2
 Safety Information3

Un-Packing6
 In Case of Damages or Missing Parts6
 What's Inside the Box6
 Tools Required for Installation6

Preparation7
 Pre-Use Testing of Components & Connectivity7
 Accessing Internal SIM Slot7
 Installing SIM Card7
 Re-Assembling ComCenter Casing7
 Locating Satellite-Viewable Work Area8
 Attaching Phone and Power8
 Activating and Testing System8

Installation9
 Attaching Bracket to Pole9
 Routing Cables9
 Connecting the ComCenter9
 Attaching Cable to ComCenter10
 Attaching ComCenter to Bracket10
 Attaching Power and Phones to Wall Plate10

Operation11
 Typical Start-Up Sequence (Overview)11
 Power-On Confirmation11
 Ready-For-Use Confirmation11
 Connecting To Your Computer Or Network Via Ethernet12
 Changing Modes12
 Finding your ComCenter With ASE Device Manager13
 Changing the Ethernet Connection Mode Using POTS/RJ-1114
 Changing the Ethernet Connection Mode Using Embedded Webpage14
 Accessing System Settings15
 Accessing ComCenter II Settings16
 Accessing ComCenter II Settings and Features17
 General Use - Voice Calls18
 General Use - Text Messaging19
 General Use - Data Calls19
 Special Features20
 Specifications23

Appendix24
 Status and Error Tones24

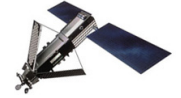
Warranty25

Declaration of Conformity27



TOLL FREE 1-888-989-8199

1455 N. Dutton Suite A, Santa Rosa, CA 95401
 FAX 707-546-8198 • info@remotesatellite.com
 www.remotesatellite.com



Overview

Unpacking

Preparation

Installation

Operation

Warranty

Appendix

Contacts

For additional information about this Product warranty, repair service, or airtime services, please contact your Service Provider or Point-of-Sale. For additional information about ASE products and services, please contact ASE as follows:

Telephone: 480.443.1424

Facsimile: 480.452.0971

Website: www.ase-corp.com

Mail: Applied Satellite Engineering, Inc.
16559 North 92nd Street, Suite 101
Scottsdale, Arizona 85260 USA

E-mail: info@ase-corp.com

Preface

ASE's ComCenter-II 'Outdoor' provides an interface between the Iridium satellite network and standard POTS/ RJ-11 telephone handsets and PABX equipment for voice, and IP (Internet Protocol) for data.

QUESTIONS

If at any time, you have questions or concerns about either the installation or operation of your ComCenter, please visit www.ase-corp.com or contact us using the information located on the cover of this manual.

Product Features

In addition to providing an uplink to the Iridium Satellite network for both Voice and Data, The ASE ComCenter 'Outdoor' also provides satellite communication users with:

Voice Features

- Indoor Satellite Phone Usage
- Extended 2-wire RJ-11/POTS connections up to 3Km
- Special tone sequences indicate normal and adverse conditions
- SmartDial Dialing Sequence

Data Features

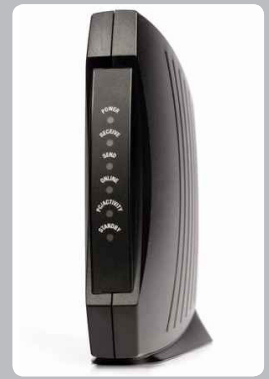
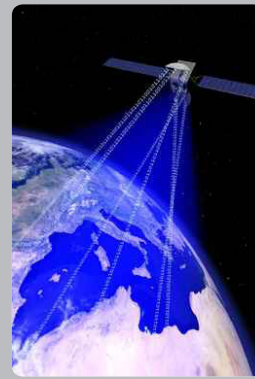
- Data Connectivity using Ethernet Infrastructure
- AT Commands for direct modem control
- Port forwarding for IP-based control of remote equipment

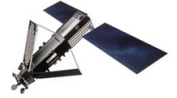
Administrative Features

- A PC-Based user console for system setup and status
- Captain/Crew PIN Codes assignments for multi-user authorization
- Scratch card support

Physical Features

- Small and compact size with built-in antenna simplifies installation
- Pole or surface mount
- Rated for outdoor exposure





Overview

Unpacking

Preparation

Installation

Operation

Warranty

Appendix

PRECAUTIONS:

Please read and understand this User's Manual before installing your ComCenter. Careless or incorrect installation can degrade performance, damage both new and existing equipment, and incur unexpected network airtime charges.

Safety Information

1. FAA Regulations

ASE products are **NOT** FAA-approved and are **NOT** intended for aircraft use.

2. Exposure to Radio Frequency Signals

Your Iridium-designed satellite unit is a low power radio transmitter and receiver. When it is ON, it receives and sends out radio frequency (RF) signals.

International agencies have set standards and recommendations for the protection of public exposure to RF electromagnetic energy:

- International Commission on Non-Ionizing Radiation Protection (ICNIRP) 1996
- Verband Deutscher Elektrotechniker (VDE) DIN-0848
- United States Federal Commission, Radio Frequency Exposure Guidelines (1996)
- National Radiological Protection Board of the United Kingdom, GS 11, 1988
- American National Standards Institute (ANSI) IEEE C95, 1-1992
- National Council on Radiation Protection and Measurements (NCRP) Report 86
- Department of Health and Welfare Canada, Safety Code 6

These standards are based on extensive scientific review. For example, over 120 scientists, engineers, and physicians from universities, government health agencies, and industry reviewed the available body of research to develop the updated ANSI standard.

The design of your phone complies with these standards when used as described under "Unit Operation."

3. Unit Operation

Do not operate the unit when a person is within 4 inches (10 centimeters) of the antenna. A person or object within 4 inches (10 centimeters) of the antenna could impair call quality and may cause the unit to operate at a higher power level than necessary and expose that person to RF energy in excess of that established by the FCC RF Exposure Guidelines.

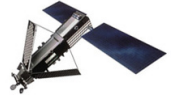
4. Driving

Check the laws and regulations on the use of wireless telephones in the areas where you drive. Always obey them. Observe the following guidelines when using your phone while driving:

- Give full attention to driving; driving safely is your first responsibility.
- Use hands-free phone operation, if available.
- Pull off the road and park before making or answering a call if driving conditions so require.

5. Electronic Devices

Most modern electronic equipment is shielded from RF signals. However, certain equipment may not be shielded against RF signals from your Iridium-designed satellite unit.



Overview

Unpacking

Preparation

Installation

Operation

Warranty

Appendix

Safety Information (Continued)

6. Pacemakers

The Health Industry Manufacturers Association recommends that a minimum separation of 6 inches be maintained between a wireless phone's antenna and a pacemaker to avoid potential interference with the pacemaker. These recommendations are consistent with the independent research by and recommendations of Wireless Technology Research.

PERSONS WITH PACEMAKERS

- Should ALWAYS keep the Iridium-designed satellite unit more than six inches from their pacemaker when the unit is turned ON.
- Should turn the unit OFF immediately if you have any reason to suspect that interference is taking place.

7. Other Medical Devices

If you use any other personal medical device, consult the manufacturer of your device to determine if it is adequately shielded from external RF energy. Your physician may be able to assist you in obtaining this information.

Turn your unit OFF in health care facilities when any regulations posted in these areas instruct you to do so. Hospitals or health care facilities may be using equipment that could be sensitive to external RF energy.

8. Vehicles

RF signals may affect improperly installed or inadequately shielded electronic systems in motor vehicles. Check with the manufacturer or its representative regarding your vehicle. You should also consult the manufacturer of any equipment that has been added to your vehicle.

9. Posted Facilities

Turn your unit OFF in any facilities where posted notices so require.

10. Blasting Areas

To avoid interfering with blasting operations, turn your unit OFF when in a "blasting area" or in areas posted "Turn off two-way radio." Obey all signs and instructions.

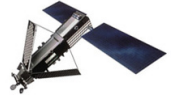
11. Potentially Explosive Atmospheres

Turn your unit OFF and disconnect the power supply when you are in any area with a potentially explosive atmosphere. Obey all signs and instructions. Sparks from your battery or power source in such areas could cause an explosion or fire resulting in bodily injury or even death.

Areas with a potentially explosive atmosphere are not always clearly marked. They include, but are not limited to: fueling areas such as gasoline stations; below deck on boats; fuel or chemical transfer or storage facilities; areas where fuel odors are present (for example, if a gas/propane leak occurs in a car or home); areas where the air contains chemicals or particles, such as grain, dust, or metal powders; and any other area where you normally would be advised to turn off your vehicle engine.

12. For Vehicles Equipped With Airbags

An air bag inflates with great force. Do NOT place objects, including both installed or portable wireless equipment, in the area over the air bag or in the air bag deployment area. If in-vehicle wireless equipment is properly installed and the air bag inflates, serious injury could result.



Overview

Unpacking

Preparation

Installation

Operation

Warranty

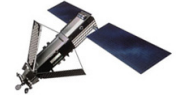
Appendix

Safety Information (Continued)

13. Important Notes for PABX System Users

If using the ComCenter with a PABX system, the following precautions must be followed to prevent damage to your unit.

The ComCenter emulates a standard land-line wall jack and generates the required operating and ringing voltages. Connect to a PABX as either a central office (CO) or trunk line. Never connect the ComCenter to a PABX as an extension or damage to the PABX or ComCenter may result.



Overview

Unpacking

Preparation

Installation

Operation

Warranty

Appendix

In Case of Damages or Missing Parts

Your ComCenter carton should contain everything needed to install the system. If you find that any component (listed below) is missing or damaged, please contact ASE immediately.

IMPORTANT:

The ASE ComCenter 'Outdoor' does NOT include the mounting pole, as the length of this component will vary widely.

What's Inside the Box

- A ComCenter IIG / Outdoor Unit
- B Communications Cable
- C Universal Wallplate
- D AC/DC power adapter: Universal AC input / 24VDC, 15W output
- E Pole Mount Adapter & Hardware
- F Installation CD
- G Product Manual
- * 20 Foot Interface Cable with cable to connector breakout (RJ-11, RJ-45, Power)

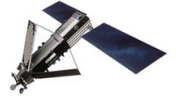
* Item not shown in Illustration

Optional 50 to 100 foot extensions allow up to 400 foot lengths



Tools Required for Installation

For this installation you will need a safe work area that is outdoors with a 360 degree view of the sky (for device testing along with a few tools including a #2 Phillips screwdriver, a 2mm Allen Wrench, and possibly a stable Ladder.



Overview

Unpacking

Preparation

Installation

Operation

Warranty

Appendix

Pre-Use Testing of Components and Connectivity

Before spending the time to fully install the Comcenter in its new home, its best to test the components and connectivity while all of the parts are still easily accessible.

IMPORTANT:

THE FOLLOWING STEPS ARE NOT TYPICALLY AN END USER REQUIREMENT, THE SIM CARD SHOULD BE PRE-CONFIGURED (UNLOCKED) AND INSTALLED BY YOUR SERVICE PROVIDER.

Accessing Internal SIM Slot

Open the Top cover from the ComCenter by removing the screws in the body as shown. Lightly squeezing the top shell will break the seal with the waterproof gasket and allow access to the interior.

NOTE:

This device will be shipped to the distributor WITHOUT the screws installed. The screws can be found inside a plastic bag. After installing the SIM card, it is very important that the screws are located and installed.



Installing SIM Card

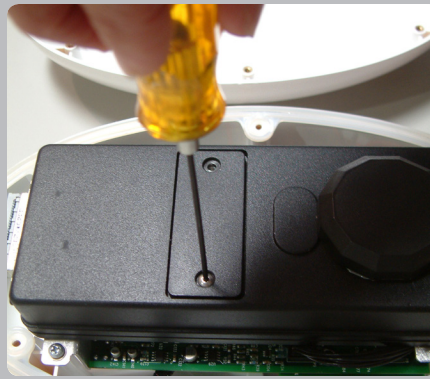
Remove the SIM door using a screwdriver; and then place the unlocked SIM card into the slot as shown.

IMPORTANT:

Make sure to "lock" the SIM holder by gently pushing it in the direction indicated by the arrow.

IMPORTANT:

The modem in your ComCenter may not be identical to that pictured here



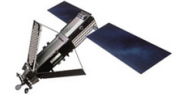
Re-Assembling ComCenter Casing

Once the SIM card has been installed, close the SIM door and lock it with the provided screws. Next re-attach the top shell taking care that the waterproof gasket seals properly as shown. Screw down the casing fasteners only once the gasket is properly seated.

IMPORTANT:

Be sure that the rubber seal is properly seated before re-tightening the Casing Screws.





Overview

Unpacking

Preparation

Installation

Operation

Warranty

Appendix

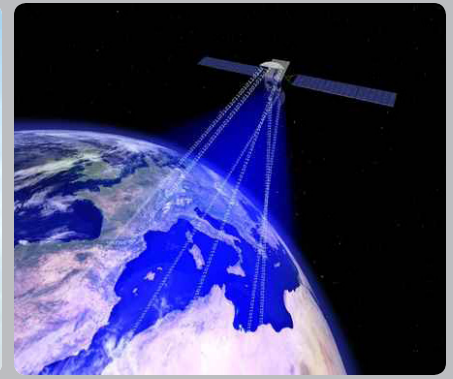
Pre-Use Testing of Components and Connectivity (Continued)

The next step in the Pre-Use Test Process will be to connect the power and at least one telephone handset. This will allow you to double check that the unit, and your cables, will perform properly once fully installed.

Locating Satellite-Viewable Work Area

To properly test the system, you'll need to place the antenna unit in a position with a 360 degree view of the sky. Any obstructions will cause a lapse in connectivity between the ComCenter and the orbiting satellites.

Run the cable to the supplied adapter (see below)

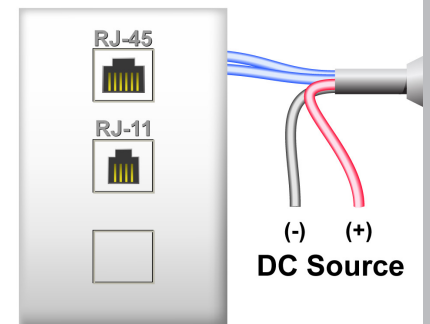
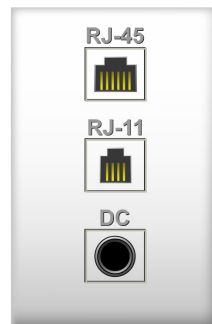


Attaching Phone and Power

If you intend to use the supplied power transformer, then connect the power jack the wall plate as shown in the top illustration. If you prefer to connect the system to another DC power source*, then simply separate the wires as shown in the bottom illustration and connect those to the alternate source.

Next connect a standard analog/POTS telephone into the RJ11 jack.

*24 - 36VDC, 15 Watts



Activating and Testing the System

Once the initialization has completed (about 30 seconds), you should hear one of the following tone patterns (depending on your system settings).

[Long] (Constant Dialtone)
or

[Found Home Network]

[Pause]-[Short]-[Pause].....

[Waiting for PIN code]

This indicates that all elements of the system are operating properly. If any element of the system is not operating correctly, the earpiece will emit a 'fault code'. Refer to Appendix A for code definitions and the troubleshooting steps to resolve them.

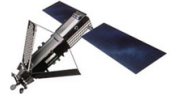


NOTE:

At this point, you should be able to pick up the Handset and hear a tone pattern. If not, you should check all your connections and try again.

IMPORTANT:

For a complete listing of the meaning behind system tone messages, see Appendix A.



Overview

Unpacking

Preparation

Installation

Operation

Warranty

Appendix

Installation

Once you have successfully "Pre-Use" tested the ComCenter device, you will be ready to proceed with system installation. Step-by-Step illustrations for this process are provided below.

Attaching Bracket to Pole

Attach the ComCenter mounting bracket to the top of a Threaded 1" diameter pipe by spinning the bracket clockwise. Once the bracket no longer turns freely, lock it in place using the set-screw as shown.

NOTE:

Usable Mounting Poles measure 1" in Diameter and are end-threaded with a 14 thread-per-inch thread.

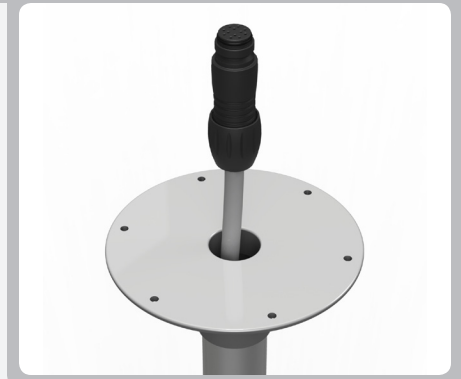


Routing Cables

Feed the Communications cable down the bracket (and pipe) toward your designated communications area. It is important to leave yourself 6-8" of extra cable that will serve as a service loop while attaching the ComCenter Outdoor Unit.

IMPORTANT:

Be sure the exposed cable contains the "Female" connector, and not the "Male".

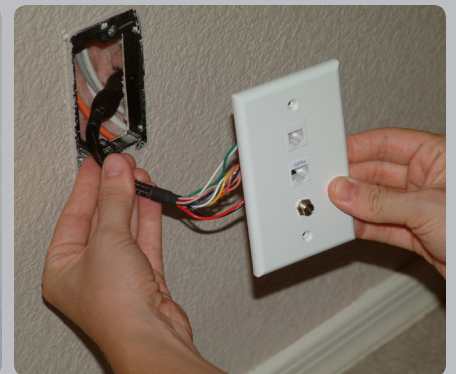


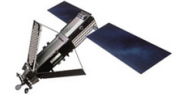
Connecting the ComCenter

Pull the opposite end of the communications cable through the wall and attach it to the supplied wall-plate adapter. Next attach the wall-plate to the wall as shown.

IMPORTANT:

Be sure the exposed cable contains the "Male" connector, and not the "Female".





Overview

Unpacking

Preparation

Installation

Operation

Warranty

Appendix

Installation (continued)

The next steps in the installation process involve making all of the final cable connections and mounting the ComCenter Outdoor Device to the newly assembled mounting bracket.

Attaching Cable to ComCenter

Plug the Female end of the communications cable to the underside of the ComCenter Outdoor unit. The cable is "keyed" to allow proper pin alignment, gently rotate the plug until it slides into place with a tactile "click".

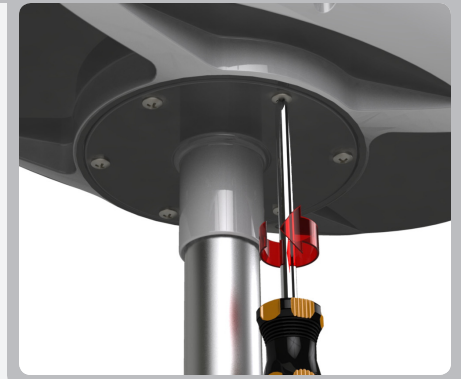


IMPORTANT:

Be careful not to bend pins.

Attaching ComCenter to Bracket

Once aligned, tighten the mounting screws in the bracket to the underside of the ComCenter Outdoor Unit.



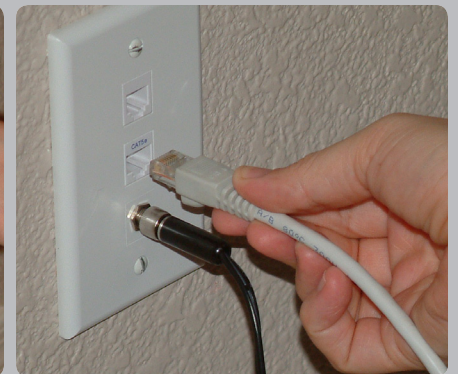
IMPORTANT:

The ComCenter Outdoor must be installed and oriented horizontally as shown for proper satellite visibility.

Attaching Power and Phones to Wall Plate

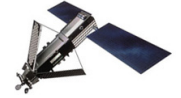
Now that the device is fully installed, plug in the standard telephone handset, the CAT-5 Communications Cable, and finally the power Supply Cable as shown. Confirm (again) proper connectivity by listening for the tone patterns in the handset.

If you do NOT have a steady dial tone, you should first check all of your connections and try again.



NOTE:

At this point, you should be able to pick up the Handset and hear a steady Dial Tone. If not, see troubleshooting in Appendix A



Overview

Unpacking

Preparation

Installation

Operation

Warranty

Appendix

Typical Start-Up Sequence

The following guide describes the basic functions of the Applied Satellite Engineering ComCenter.

IMPORTANT:

Visit www.ase-corp.com for the latest updates. For further information or clarification, Please contact your service provider. Your service Provider's tech support number should be included with the shipment.

Power-On Confirmation

Searching for Network (*Standard Telephone Handset*)

Within 10 seconds after power-up, you should hear a tone pattern through the standard telephone handset; this indicates that the system is searching for the Iridium network.

[Long]-[Short]..... [Searching for Network]

Registered with Network (*Standard Telephone Handset*)

Once the ComCenter has established a network connection to the Iridium Satellite Network, you will then hear the following:

[Short]-[Short]-[Short]-[Short]-[Short] [Found Home Network]



Ready-For-Use Confirmation

System Ready (*Standard Telephone Handset*)

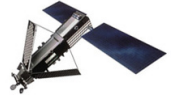
Once system is ready to accept a dial request, you will hear dial tone or a pin code tone.

[Long] (Constant) [Found Home Network]

[Pause]-[Short]-[Pause]..... [Waiting for PIN code]

IMPORTANT:

For a complete listing of the meaning behind system tone messages, see Appendix A.



Overview

Unpacking

Preparation

Installation

Operation

Warranty

Appendix

CONNECTING TO YOUR COMPUTER OR NETWORK VIA ETHERNET (RJ-45)

The ComCenter II's Ethernet port provides a powerful IP-addressable data connection to your local area network (LAN) or directly to your computer. For maximum connection flexibility, the ComCenter II supports the following connection options;

1. DIRECT or fixed IP address for advanced users.
2. DHCP CLIENT for automatic network integration (default).
3. DHCP SERVER for direct PC or Laptop connection.

DIRECT MODE

For single node or networks with fixed IP addresses

The direct mode allows you to manually assign a fixed IP address to the ComCenter II. The ComCenter II's default IP address is 192.168.1.100 but can be changed if needed. Direct mode is typically for advanced users who need to assign specific IP addresses to support their network configuration.

DHCP CLIENT MODE

For multi-node networks that have a DHCP server (router)

This is the most common network connection mode. You connect the ComCenter II to your network like any other Ethernet device and it gets assigned an IP address automatically. This is typically done by an Ethernet router in the network that also provides this DHCP server function.

DHCP SERVER MODE

For single node / multi-node networks w/o a router or other DHCP server

In this mode, the ComCenter II assigns IP addresses to network peripherals, normally done by an Ethernet router, and retains its own default IP address of 192.168.1.100. This mode is a convenient way to connect directly to a laptop without the need for a router.

CHANGING MODES

The default mode is DHCP Client but can be changed in the following ways;

1. Entering codes with the connected POTS/RJ-11 equipment
2. Clicking on the desired mode via the embedded webpage.



Overview

Unpacking

Preparation

Installation

Operation

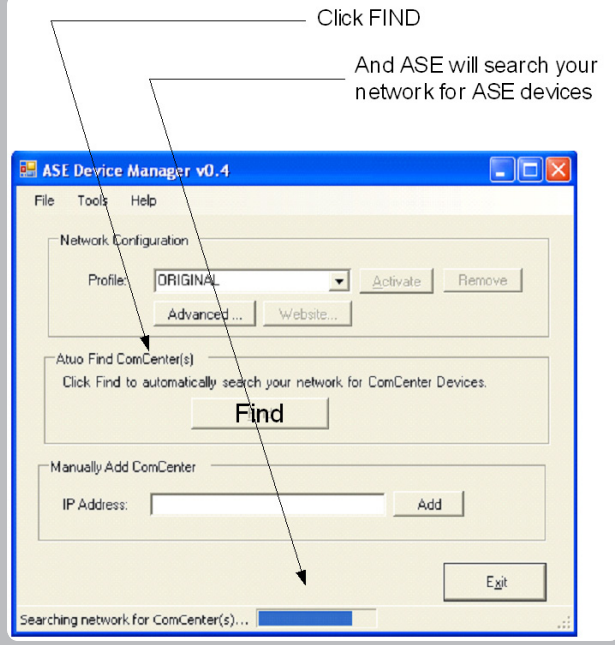
Warranty

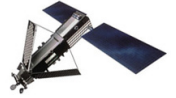
Appendix

Finding your ComCenter II with ASE Device Manager

The ASE Device Manager utility is included with your ComCenter II on CD-ROM. Install on your host computer and let the ASE Device Manager simplify your network installation.

Simply click the FIND button and the ASE Device Manager will scan your network for ASE Devices. Found device(s) will then be listed in the drop-down Profile box. You can now select the device from the profile box and open its unique webpage to access its data features, or connect your PC to the Internet directly through the device.





Overview

Unpacking

Preparation

Installation

Operation

Warranty

Appendix

Changing the Ethernet Connection Mode Using POTS/RJ-11:

The Ethernet Connection Mode can be changed via the connected POTS/RJ-11 equipment. Listen to audible beeps to confirm the mode setting. To change mode, take the POTS/RJ-11 phone off-hook and press the following keys;

*610 = DIRECT (1 beep)

*611 = DHCP Client (2 beeps)

*612 = DHCP Server (3 beeps)

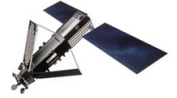
Additional useful commands using POTS/RJ-11;

*994 gives audible beeps according to mode setting.



Changing the Ethernet Connection Mode Using Embedded Webpage:

Accessing the embedded webpage in the ComCenter II may not be possible unless the default DHCP Client mode is compatible with your specific network. Once you are able to access the ComCenter II's webpage, the mode can be changed by clicking on the CONFIGURE button. This page will allow you to change modes. CAUTION: changing modes will likely cause you to lose access to the webpage until the network or direct connection is also configured to this new mode.



Overview

Unpacking

Preparation

Installation

Operation

Warranty

Appendix

Accessing System Settings

System settings can be accessed and changed in several ways to allow access depending on what interface(s) you are using.

Changeable settings include;

SmartDial 911 USA

Crew ID protected access

Captain's card installed

Periodic reporting

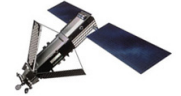
PBX Answer Signaling

Voice volume adjust (POTS/RJ11 access only)

Event log and diagnostic monitoring (embedded webpage only)

Restore to factory defaults

The embedded webpage provides simple selection and dialog boxes for easy setting changes. Many of these settings can also be accessed and changed via the RJ-11/POTS connected equipment.



Overview

Unpacking

Preparation

Installation

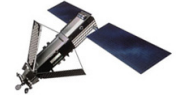
Operation

Warranty

Appendix

Accessing ComCenter II Settings (RJ-11)

OPTION	SEQUENCE	DESCRIPTION
Volume	* 20 [1 Lowest 2 3 4 5 Highest]	Press *20 and then press 1 through 5 to change the volume level sent to the handset. Press 1 to adjust the volume to its lowest level, and 5 to adjust it to its highest.
US 911	* 50 [0 Disabled 1 Enabled]	Press *500 to toggle USA 911 dialing off and *501 to toggle it on. By default the ComCenter II is set to USA 911 On. We strongly recommend leaving 911 dialing on if you are a United States customer. Be sure to read the sections below discussing emergency 911 calls. This setting partially overrides SmartDial recognition of country codes and allows United States callers to simply type 911 to access the emergency system. (If this setting is off, then calls starting with "91" are recognized as dialing the country code for India.)
Captain's Sim	* 53 [0 Disabled 1 Enabled]	Press *530 for standard SIM card. Press *531 for Captain's SIM.
PBX Answer Signaling	* 54 [0 Disabled 1 Enabled]	Signals PBX when call connects by battery reversal
Network Mode	* 61 [0 Direct 1 Client 2 Server]	Sets the network mode with 0 being DIRECT, 1 being DHCP Client and 2 being DHCP Server
Phone Book	* 7 , ###	Press *7 to reach the Phone Book that resides in the SIM card, then enter the three-digit QuickDial number for the entry you wish to dial. Hang up to exit this menu.
Send GPS Location	* 9 1 1	Sends GPS coordinates to the e-mail address in the Periodic Message destination field
Network Mode	* 9 9 4	Press *994 for audible beeps that indicates the IP Mode setting. Direct = 1 beep DHCP Client = 2 beeps DHCP Server = 3 beeps
Turn PIN off	* 1 1 1 1	Unlocks SIM by turning the default Iridium PIN code off. The ComCenter II requires the PIN be turned off to access the satellites.
Restore Defaults	* 1 2 3 4 5	Restores default settings (excluding network settings)



Overview

Unpacking

Preparation

Installation

Operation

Warranty

Appendix

Accessing ComCenter II Settings and Features (Embedded Webpage)

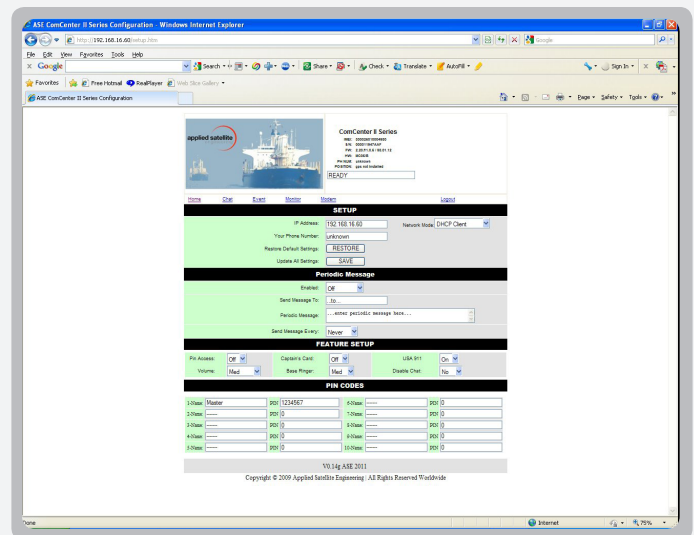
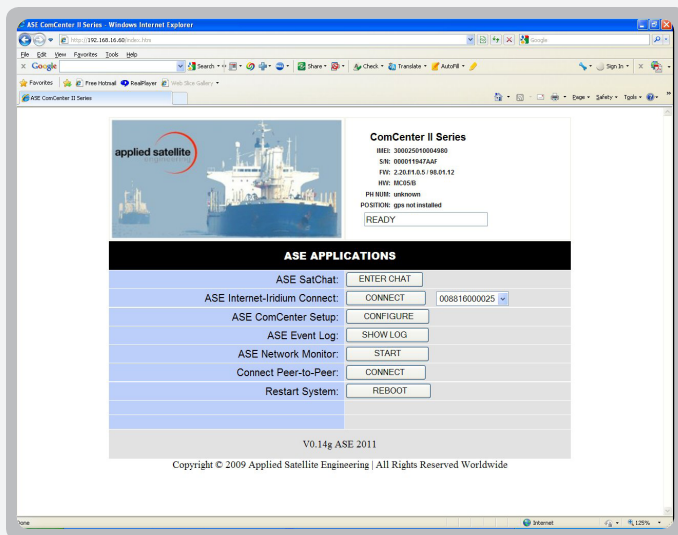
Once connected to your network or computer, the ComCenter II's internal webpages provide access to many features and settings.

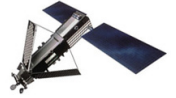
The images below give a general overview of just a couple of the internal pages where you can access settings and features. Navigation between the internal pages is via simple mouse clicks, so not all pages are shown in this document.

Webpage Features include:

- ASE Satchat text messaging
- Single click Internet connection
- Periodic Messaging with optional GPS coordinates
- PIN access codes for crew calling
- IP modem control and port forwarding
- General system settings and diagnostics

See "Special Features" for additional details.





Overview

Unpacking

Preparation

Installation

Operation

Warranty

Appendix

General Use - Voice Calls

ASE's SmartDial technology makes dialing simple. SmartDial automatically identifies the country code and knows how many digits are required for that country code. Once the correct number of digits have been entered, dialing commences automatically. SmartDial de-activates itself when the standard '00' Iridium dialing sequence is detected. Pressing "#" to send is then required to initiate the call.

- **Placing a call with POTS/RJ-11** Take the POTS/RJ-11 phone off-hook and listen for dial tone. When dial tone is present, simply enter the country code, area code, and phone number. SmartDial will automatically place the call when the correct number of digits are entered and you will hear the Iridium 'boop' sound until the call connects.

Examples using SmartDial:

USA call: 1(3-digit area code)(7-digit phone number)

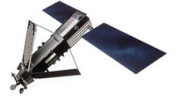
Iridium ISU call: 8816(8-digit phone number)

Examples bypassing SmartDial:

USA call: 001(3-digit area code)(7-digit phone number)(# to send)

Iridium ISU call: 0118816(8-digit phone number)(# to send)

- **Answering a call with POTS/RJ-11** POTS/RJ-11 phone connected to the ComCenter II will automatically ring when an incoming call is pending. Simply take off-hook to answer.



Overview

Unpacking

Preparation

Installation

Operation

Warranty

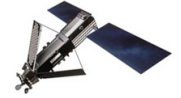
Appendix

General Use - Text Messaging

- **Text messaging with ASE SatChat** ASE's powerful and convenient SatChat provides simple SMS text messaging dialogue from any Ethernet connected device such as network computers, wireless laptops, and even iPhones, and iPads. This included feature is available by accessing the ComCenter II's embedded webpage and works similar to short email messages and blog dialogues. ASE Satchat messages can be sent to and received from other SMS enabled Iridium equipment and cell phones, as well as standard email addresses.

General Use - Data Calls

The ComCenter II simplifies data connections via its embedded webpage. Depending on the type of connection, a simple button click from this webpage will initiate an Iridium PPP session or peer-to-peer connection. Port forwarding features are also available for advanced users.



Overview

Unpacking

Preparation

Installation

Operation

Warranty

Appendix

SPECIAL FEATURES

POTS/RJ-11 PORT

This port provides a versatile satellite link to the standard equipment you're already familiar with. RJ-11 connected equipment can be located more than a mile away from the ComCenter II, solving antenna location problems and minimizing costly antenna runs.

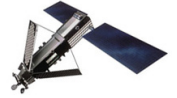
Besides being a voice link, this interface has the following additional features;

- **VOICE CONNECT WITH SMARTDIAL.** SmartDial simplifies satellite dialing sequences by converting familiar land line dialing to satellite dialing. But if you prefer satellite dialing, SmartDial will automatically detect and disable itself.
- **PABX & WIRELESS BASE STATION.** Typical RJ-11 applications include trunk line interface to standard multi-user PABX systems, base station with single or multiple wireless handsets, or a single analog phone powered entirely by the ComCenter II for resilience planning communications back up.
- **ACCESS TO SYSTEM SETTINGS.** ComCenter II system configuration and settings are accessible via this port.
- **STATUS AND ERROR TONES.** Since most RJ-11 connected equipment is located a great distance from the ComCenter II, specific audible tones let you know system status at all times.
- **INSTANT GPS POSITION REPORT.** Pressing *911 from a 2-wire RJ-11 phone immediately sends a GPS position report to the e-mail address in the Periodic Messaging delivery field.

ETHERNET PORT

This port opens up tremendous network and peripheral connection possibilities. Ethernet connection to the ComCenter II also gives you access to unique features and applications contained in its internal webpage. Features of this port include;

- **DATA CONNECT WITH ASE WEBPAGE.** Use your favorite web browser to access the ComCenter II's embedded webpage. Data connections from the ComCenter II's webpage take just a simple click of the mouse.
- **DIRECT & WIRELESS ROUTER CONNECT.** Connect directly to a single computer, drop onto your network, or use a wireless router for optimum convenience.
- **ASE SATCHAT.** Simple yet powerful SMS text messaging application available from the embedded webpage.
- **ASE PORT FORWARDING.** This special feature requires two ComCenter IIs in most cases to easily solve difficult Iridium-linked M2M applications. Details are beyond the scope of this manual. Please contact ASE for more information.
- **SECURITY PIN CODES.** Another feature included in the embedded webpage is the option to set PIN codes to prevent unauthorized use. Voice and data access become disabled and the ComCenter II will then prompt the user for a valid PIN code.
- **STATUS AND ERROR DISPLAY.** The ComCenter II's embedded webpage has a real time status bar showing current state of the system and Iridium network.
- **ACCESS TO SYSTEM SETTINGS AND DIAGNOSTICS.** ComCenter II system configuration and settings are accessible via the embedded webpage. This webpage also includes diagnostics and system logs useful for installation confirmation and general use stats.
- **AT COMMANDS.** Third party integrators can connect directly to a TCP/IP socket (<xxx.xxx.xxx.xxx:23>) and execute AT Commands to directly control the modem. Contact ASE for complete AT Command Set.



Overview

Unpacking

Preparation

Installation

Operation

Warranty

Appendix

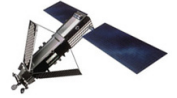
SPECIAL FEATURES (continued)

EMBEDDED WEB PAGE

As an extension of the Ethernet port, the ComCenter II provides unique and power features via its internal, embedded web pages. System information is displayed in the header of all web pages, including; system IMEI, Firmware Versions, Your Phone Number (see setting Your Phone Number below) and the current System Status.

The Embedded web pages provide the following ASE special features;

- **ASE SATCHAT:** Provides SMS chatting service to other Iridium phones, email addresses or cell phones (check with cell phone provider for international support).
- **ASE IRIDIUM-IRIDIUM CONNECT:** Initiates an internet connection via the Iridium ISP. The ComCenter II will perform the dial-up and PPP authentication. Once status reports ONLINE you have established your Internet Connection.
- **ASE COMCENTER SETUP:** Provides system configuration including your phone number, periodic messages, configuration options, and user PIN codes. Further and advanced setup options are available if you proceed to the MODEM web-link. Note: When PIN Access Required is set to ON, access to this page requires one of the 10 user set PIN codes previously setup on this page.
- **SAVE AND RESTORE:** You must click save to accept all changes to the configuration. Restore will restore the factory default configuration.
- **YOUR PHONE NUMBER:** During installation of your ComCenter, enter Your Phone Number as a convenient method to store this number.
- **INSTANT GPS POSITION REPORT / PERIODIC MESSAGES:** Enter an e-mail address for Periodic Messages and Instant GPS Position Reports. Note SMS messages may incur extra airtime charges. Check with your service provider for more information. For Periodic Messaging, GPS coordinates can be included in the report (MC05G model only) by typing "(GPS)" as the first characters in the periodic message.
- **PIN ACCESS REQUIRED:** [On | Off] Activates ComCenter II PIN codes as described below.
- **HANDSET VOLUME:** [5 Levels]
- **CAPTAINS CARD:** [Yes | No] If your SIM card is the type called "Captain's Card", then this option must be set.
- **USA 911:** [On | Off] Allows 911 calls in US. Note: 911 conflicts with country code for India. If using SmartDial pattern for calls to India, the USA911 can be turned off.
- **PIN CODES:** These assigned PIN Codes allow Post-paid access to the Iridium service for systems using a SIM card type "Captain's Card". The PIN must be a 7-digit number. If fewer digits are stored, the system expects pre-pended 0's to complete the 7-digits. For example: PIN 85260 would require entering 0085260 when accessing system.
- **ASE PEER-TO-PEER:** Provides Peer-to-Peer configuration and connection. Setup includes Dial-up number, or RAS (Remote Answer) enable, and Port Forwarding.
- **SAVE :** You must click save to accept all changes to the configuration.
- **DIAL-UP NUMBER:** This is the number of the device to be called when using this modem as the calling device (MO) when initiating a Peer-to-Peer session.
- **RAS:** Enable the Remote Answer Service in the modem when using this modem as the called device (MT) in a Peer-to-Peer session.



Overview

Unpacking

Preparation

Installation

Operation

Warranty

Appendix

SPECIAL FEATURES *(continued)*

- **PORT FORWARDING:** IP addresses within the local network of the remote site can be accessed using Port Forwarding by assigning local IP addresses to unique ports. The syntax is WanPort, Local IP address:Port. For example to allow port forward access to a web-server running on local device 192.168.1.52:80, the setup would be 80,192.1.52:80.
- **ASE EVENT LOG:** Displays a list of the last 100 system events. These events include phone usage and SMS usage.
- **ASE NETWORK MONITOR:** Updates list of signal strength and other system status information every 15 seconds.
- **RESTART SYSTEM:** Provides a mechanism for remote system reboot.



Overview

Unpacking

Preparation

Installation

Operation

Warranty

Appendix

SPECIFICATIONS

Interface Cable Lengths (Max)

RJ-11 (Voice)	8,000 feet
Ethernet (Data)	400 feet
Power	400 feet (24-36VDC)

Electrical Specifications

Operating Voltage	12 - 36 VDC
Power Consumption	4 Watts (Idle/Standby)
	9 Watts (Avg Active)
	15 Watts (Peak)

Environmental Specifications

Operating Temp Range	-40°C to +70°C
Exposure	Outdoor per IEC 60945

Mechanical Specifications

Dimensions	11L x 6W x 5H inches
Weight	3.0 lbs
Mounting	Pole or Surface

Internal Iridium Antenna Specifications

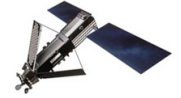
Frequency Range	1616 MHz to 1626.5 MHz
Return Loss (Min)	9.5 dB (<2:1 VSWR)
Gain (Weighted Ave. Min)	0.00 dBic
Min Horizon Gain	-2.0 dBic (82° conic avg)
Nominal Impedance	50
Polarization	Right Hand Circular (RHCP)
Basic Pattern	Omnidirectional & Hemispherical

Internal GPS Specifications

Signals Tracked	Tracking L1, C/A Code, AGPS, SBAS, (WAAS, EGNOS)
Frequency	1575.42 MHz
Channels	16
Update Rate	Up to 4 Hz
Report Rate	Configurable
Accuracy	
Horizontal Position	< 2.5 m (1 - Sigma)
	< 2.0 m (SBAS)
Velocity	< 515 m/s
Altitude	10,000 m (33,000 ft) max

Wide Operating Power

The ComCenter II Outdoor operates over a 12 - 36VDC range. However, for power runs greater than 25 feet, 24 - 36VDC is recommended to compensate for any voltage losses due to extended power runs. A 24VDC, 15W power adapter is included with the product.

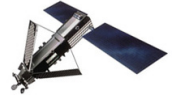


Status and Error Tones (RJ-11/POTS interface only)

DESCRIPTION	TONE NAME	TONE PATTERN
Powering Up Initialization	NOT READY TONE	<long tone><bleep>...repeat
Searching for Network	NOT READY TONE	<long tone><bleep>...repeat
Ready to Dial	DIAL TONE	<continuous dial tone>
Enter ASE Access PIN CODE	PIN CODE BEFORE DIAL	<pause><bleep>...repeat
Device on Data Call	BUSY TONE	<continuous busy tone>
Poor Signal during Call	POOR SIGNAL	<bleep><bleep>
Missing SIM Card	ALERT TONE + BEEP COUNT	Alert Tone + 2 beeps
Locked SIM Card	ALERT TONE + BEEP COUNT	Alert Tone + 3 beeps
Registration Denied	ALERT TONE + BEEP COUNT	Alert Tone + 4 beeps
Bad SIM Card	ALERT TONE + BEEP COUNT	Alert Tone + 5 beeps

MAINTENANCE SCHEDULE

- Test system periodically to verify proper operation. Note: this procedure can be automated using the Periodic Messaging feature
- Replace large O-ring annually to prevent water ingress
- Periodically clean outside surface of unit to remove any residue or contamination build up that could impair satellite visibility.
- Verify horizontal orientation of unit for optimum satellite visibility and there are no signal obstructions.



Overview

Unpacking

Preparation

Installation

Operation

Warranty

Appendix

ASE Limited Warranty

1. Coverage and Duration

Applied Satellite Engineering, Inc. (ASE) warrants that its new satellite subscriber radiotelephone products and accessories (the "Product") shall be free from defects in materials and workmanship for a period of twelve (24) months from the date such Product is delivered to the first end-user purchaser or first lessee (the "Purchaser"), or the date such Products are first placed into satellite subscriber service, whichever occurs earliest. ASE, at its option, shall at no charge to Purchaser, either repair or replace the Product, or refund the purchase price of a Product that does not conform to this warranty, provided the Product is returned in accordance with the instructions set out below and within the warranty period. These remedies are Purchaser's exclusive remedies under this warranty. Repair may include the replacement of parts or boards with functionally equivalent reconditioned or new parts or boards. A Product that has been repaired or replaced is warranted for the balance of the original warranty period. A Product for which a replacement has been provided shall become ASE's property.

This warranty is made by ASE to the Purchaser of the Products only, and it is not assignable or transferable by the Purchaser. This is ASE's sole and complete warranty for the Products. ASE assumes no obligation or liability for additions or modifications to this warranty unless made in writing and signed by an officer of ASE. ASE does not warrant any installation, maintenance, or service of the Products not performed by ASE.

This product is covered by a U.S.A. warranty. If the Product has been sold outside of the U.S.A., ASE will honor the U.S.A. warranty terms and conditions only. Outside of the U.S.A., any different warranty terms, liabilities, and/or legal requirements of the country in which the Product is sold are specifically disclaimed by ASE.

2. Conditions Not Covered By This Warranty

a) Products that are integrated, installed, maintained, or serviced in any manner other than in accordance with the ASE user documentation furnished with or applicable to the Product.

b) Product damage caused by the use of ancillary equipment not furnished by ASE, including accessories and peripherals.

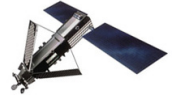
c) Problems where the Product is used in a combination with ancillary equipment not furnished by ASE and it is determined by ASE there is no fault with the Product.

d) Ancillary equipment not furnished by ASE that is attached to or used in connection with the Products is not the responsibility of ASE, and all such equipment is expressly excluded from this warranty. Furthermore, ASE does not warrant the integrated operation of the combination of the Products with any ancillary equipment not furnished by ASE.

e) Defects or damage resulting from: use of the Product in any manner not normal or customary; misuse, accident, or neglect, including but not limited to dropping the Product onto hard surfaces, immersion in or exposure to water, rain or extreme humidity, immersion in or exposure to sand, dirt, or other particulates, exposure to extreme heat, spills of food or liquid; improper testing, operation, maintenance, installation, adjustment; or any alteration or modification of any kind.

f) Batteries manufactured by ASE and sold with Products whose capacity exceeds 80% of rated capacity are not covered. Batteries whose capacity falls below 80% of rated capacity, or that develop leakage, shall be considered non-conforming. This warranty is voided for batteries if: i) such batteries are charged by other than the ASE-approved battery charger specified for charging such batteries; ii) any seals on such batteries are broken or show evidence of tampering; iii) such batteries are used in equipment other than the Product for which they are specified; or iv) such batteries are charged and stored at temperatures greater than 60 degrees Celsius.

g) Breakage or damage to antennas, or scratches or other damage to plastic surfaces or other externally exposed parts caused by Purchaser's use.



Overview

Unpacking

Preparation

Installation

Operation

Warranty

Appendix

ASE Limited Warranty (Continued)

- h) Products disassembled or repaired in such a manner as to adversely affect performance or prevent adequate inspection and testing to verify any warranty claim.
- i) Products on which serial numbers or date tags have been removed, altered, or obliterated.
- j) Coil cords that are stretched or on which the modular tab is broken; leather cases, which are covered under separate manufacturer's warranties.
- k) Products rented on a month-to-month basis.
- l) Normal wear and tear.

3. Obtaining Warranty Service

For warranty questions, repairs, or for the return of Product, please call your Service Provider or Point-of-Sale, not ASE. Equipment needing service should be returned to your Service Provider or Point-of-Sale, not ASE. SERVICE WORK PERFORMED BY SERVICE CENTERS NOT AUTHORIZED BY ASE TO PERFORM SUCH WORK WILL VOID THIS WARRANTY.

All products shipped to ASE's authorized Warranty Service Center must be shipped with freight and insurance prepaid. Purchaser must include with the Product a bill of sale, a lease, or some other comparable proof of purchase, the name and location of the installation facility, if any, and most importantly, the Purchaser's name, address, and telephone number and a written description of the problem. Product that is repaired or replaced under this warranty shall be returned to Purchaser at ASE's expense for the freight and insurance, and at Purchaser's expense for any applicable duties or other charges. If additional information is needed, please contact ASE at the address and phone number listed in Paragraph 6 below.

4. General Provisions

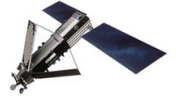
THIS WARRANTY IS GIVEN IN LIEU OF ALL OTHER WARRANTIES EXPRESS OR IMPLIED, INCLUDING BUT NOT LIMITED TO THE IMPLIED WARRANTIES OF MERCHANTABILITY AND FITNESS FOR A PARTICULAR PURPOSE. FURTHER, THIS WARRANTY COVERS THE PRODUCTS ONLY, AND NO WARRANTY IS MADE AS TO COVERAGE, AVAILABILITY, OR GRADE OF SERVICE PROVIDED BY ASE SEPARATELY FOR ASE SATELLITE SERVICES. IN NO EVENT SHALL ASE BE LIABLE FOR DAMAGES IN EXCESS OF THE PURCHASE PRICE OF THE PRODUCT IN QUESTION, OR FOR ANY LOSS OF USE, LOSS OF TIME, INCONVENIENCE, COMMERCIAL LOSS, LOST PROFITS OR SAVINGS OR OTHER INCIDENTAL, SPECIAL, OR CONSEQUENTIAL DAMAGES ARISING OUT OF THE USE OR INABILITY TO USE SUCH PRODUCT, TO THE FULL EXTENT SUCH MAY BE DISCLAIMED BY LAW.

5. State Law and Other Jurisdiction Rights; Software Copyrights

Some states and other jurisdictions do not allow the exclusion or limitation of incidental or consequential damages, or limitation on how long an implied warranty lasts, so the above limitations or exclusions may not apply to Purchaser.

This warranty gives Purchaser specific legal rights, and Purchaser may also have other rights that vary from jurisdiction to jurisdiction.

Laws in the United States and other countries preserve for ASE certain exclusive rights for copyrighted Product software such as the exclusive rights to reproduce in copies and distribute copies of such Product software. Product software may be copied into, used in, and redistributed with only the Product associated with such Product software. No other use, including without limitation disassembly, of such Product software or exercise of exclusive rights in such Product software is permitted.



Declaration Of Conformity

Declaration of Conformity

Application of Council Directive: 2004/108/EC

**Standards To Which
Conformity Is Declared:**

IEC60945:2002	
Conducted Emissions	Clause 9.2
Radiated Emissions	Clause 9.3
Conducted RF Disturbance	Clause 10.3
Radiated RF Immunity	Clause 10.4
Electrical Fast Transients	Clause 10.5
Electrostatic Discharge	Clause 10.9
Compass Safe Distance	Clause 11.2

Manufacturer's Name: Applied Satellite Engineering Inc.

Manufacturer's Address: 16559 N. 92nd Street, #101
Scottsdale, AZ 85260
(480) 443-1424

Equipment Description: ComCenter II

Equipment Class: Maritime Navigation and Radio
Communication Equipment and
Systems

Model Numbers: MC01,MC04,MC05,MC06 (Incl of
MC07,MC08)

*I the undersigned, hereby declare that the equipment specified above,
conforms to the above Directive(s) and Standard(s).*

Place: Scottsdale, AZ, U.S.A.
Signature: Bill Reddy
Full Name: Bill Reddy
Position: Dir. Engineering