

How to install your Outside Mount Shutters

coverly

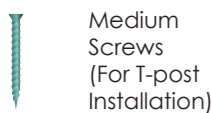
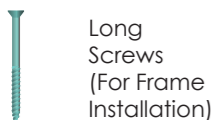
Difficulty: ★☆☆☆☆

Required Tools



Included Hardware

The hardware can be found in the small hardware box included with your blind.



1 Getting Started

Make sure to cross-reference your window label to find the right shutter.

02/14/2022
307283/Steinbeck
Bedroom 1
48 1/2" x 59"
LR 3 1/2"

W- White
2

9093492
WOOD
7498
1/4

1 of 4 packs
49094582992997

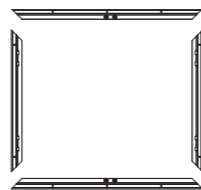
Hinges: BRASS



- Do not dispose of packaging until the shutters are operating appropriately.
- Use of a moving blanket or drop cloth is recommended.
- Find ample working space to assemble your frame (preferably in front of the window).
- Check the diagram to make sure you have all the parts indicated for an appropriate installation.

2 Assemble the Frame

- Carefully remove panels and frames from the packaging. Do not mix panels or frames from other windows. All frame parts are labeled (top, bottom, right, left).



- Locate each side of the frame. (top, bottom, right, left).

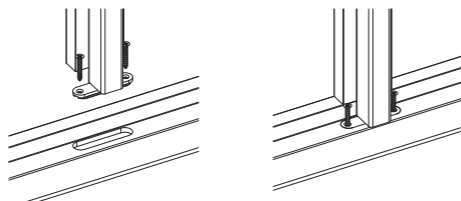
Tip: The frame will be easier to assemble when flipped upside down.

- Set all frames on a soft, level surface (moving blankets or some type of pad works best). Position each side of the frame and line up the Hoffman Key slot.

※ **If not installing with T-POST, skip to #5.**

- The top and bottom of the T-post are labeled. Locate and identify. Line up the pre-drilled holes with the top and bottom frame and secure with screws provided. Fasten the T-post with additional nails if necessary.

⚠ The T-post connector provides some wiggle room, make sure the T-post is at the center position at each end and secure with two screws. The T-post can also be adjusted when gaps between panels are not even.

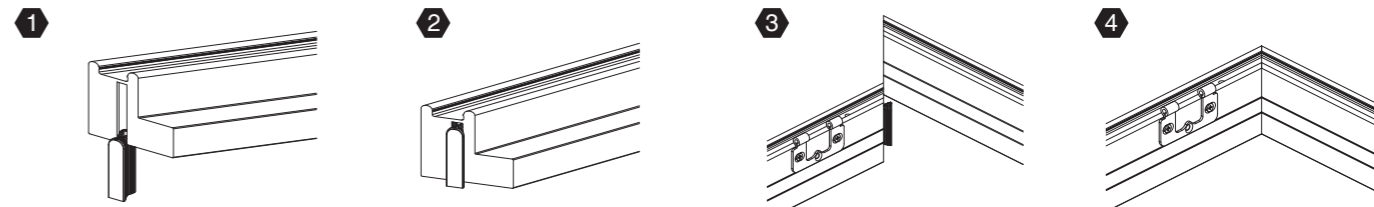


How to install your Outside Mount Shutters

coverly

Difficulty: ★☆☆☆☆

- Insert the Hoffman Key into each slot at the back of the frame. Use a rubber mallet if necessary.

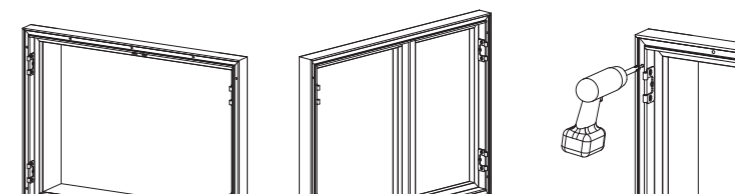


⚠ The Hoffman Key has a rounded side and a flat side. The rounded side should be inserted in slot first.

With the rounded side of the Hoffman Key facing up, push the top frame down onto the Hoffman Key.

Repeat step ⑤ for remaining corners to complete the 4-sided frame assembly.

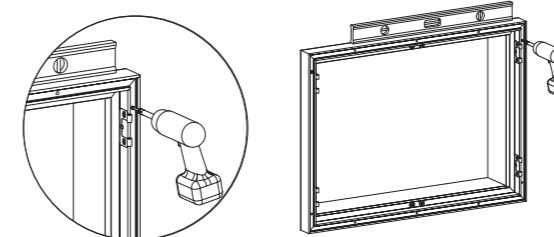
- Position the assembled frame evenly around the window opening & secure with a screw into the upper left frame **ONLY**. Shutter will be fully secured in later steps. Once done, level the frame on the window.



Frame only

Frame with T-post

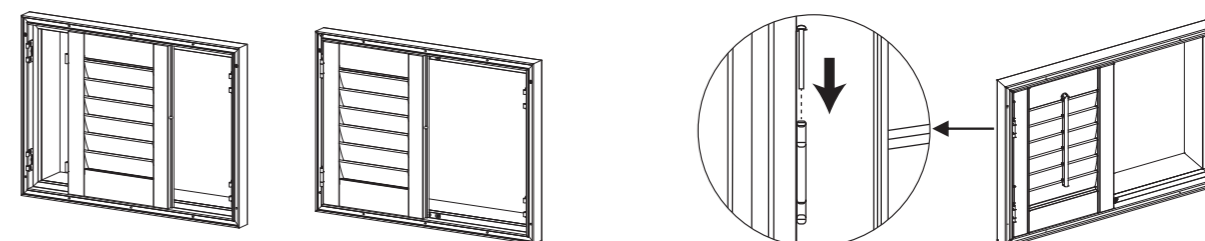
- Once the left side is secured, to keep the frame level and secure with a screw into the upper right frame. Shutter will be fully secured in later steps.



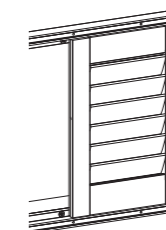
Once top right & left frame are secured, panels can be installed...

3 Assemble Panels

- Place the left shutter panel(s) in the frame, slide into position, align the hinges, insert hinge pins into hinges.



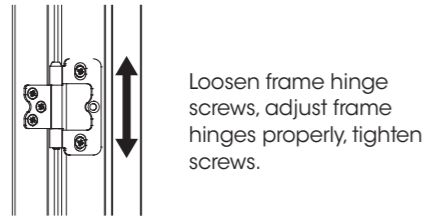
- Place the right shutter panel(s) in the frame, and insert hinge pins into hinges.



How to install your
Outside Mount Shutters

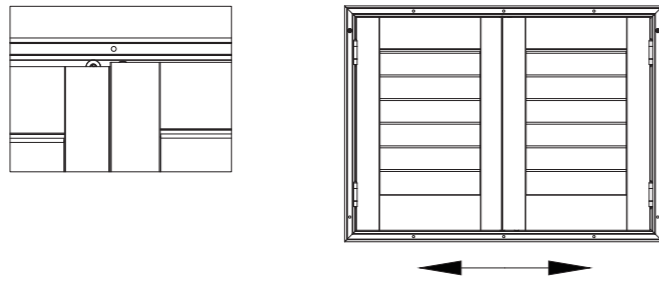


⑩ If panel hinges are not aligned with frame hinges properly, then frame hinges can be adjusted.

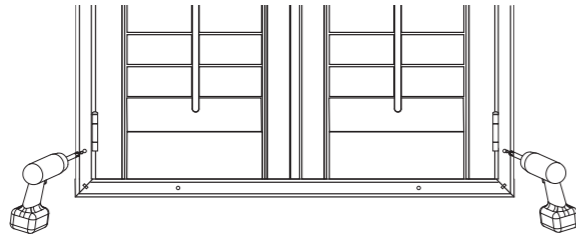


⑪ Once panels have been positioned and secured with the hinge pins, make sure shutter panels are even across the top and bottom. If panels are not even, shift (rack) your frame left to right until the gap is even.

Remember: bottom frame should not be secured at this point.



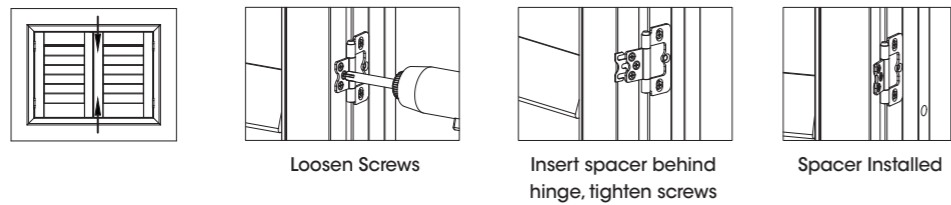
⑫ Once panels line up, secure a screw at the bottom of the left frame and right frame.



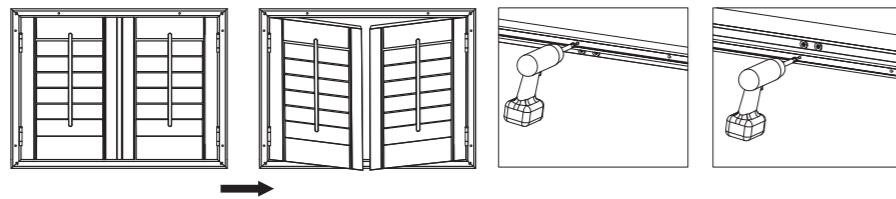
Tip: Step away from the window and open louvers to ensure the shutter is evenly positioned on the window.

(DOUBLE CHECK AND MAKE SURE PANELS ARE STILL EVEN ACROSS THE TOP)...

⑬ Check gap between panels and adjust accordingly with hinge spacers provided if needed.



⑭ Open and close panels to make sure panels operate properly. Secure the frame with screws through the rest of the holes. Make sure gap between the panel and the frame are even.



Tip: Move top & bottom frame up and down to achieve proper tolerance between panel and frame.

Tip: Move side frames in and out to achieve proper tolerance between panel and frame.

How to install and maintain your
Outside Mount Shutters



⑮ Fasten the deadlock screw for all hinges.

