

Industrial 10-Port 10/100Base Managed Switch with (2) 100Base Fiber Ports

SF7105xM2

Product Features

- (8) 10/100Mbps Copper Ports
- (2) 100Mbps Fiber Ports
- Non-blocking store-and-forward switching
- Supports flow control for full duplex operation
- Supports back-pressure flow control for half-duplex operation
- Supports Spanning Tree (STP, RSTP)
- Supports Point-to-Point or Ring configurations
- Supports real-time monitoring
- Redundant DC power
- 4KV Ethernet surge protection
- Extended temperature range
- Corrosion resistant
- Industrial rated Emission and Immunity performance
- Supports DIN rail mounting



Models

Model	Fiber Ports	Wavelength	Tx Power (dBm)	Rx Sens. (dBm)	Rx Max. (dBm)
SF71053M2	(2) MM, ST, 2km	1310nm	-19 ~ -14	-31	-14
SF71054M2	(2) MM, SC, 2km	1310nm	-19 ~ -14	-31	-14
SF71055M2	(2) SM, SC, 20km	1310nm	-15 ~ -8	-30	-7

Technical Specifications

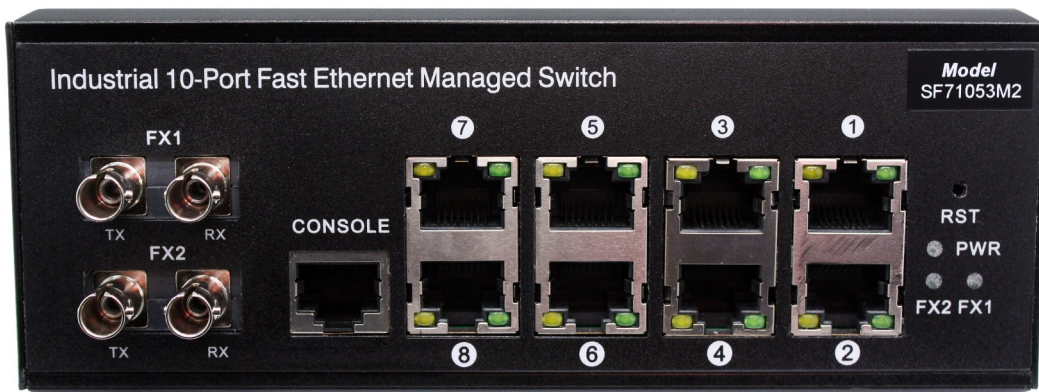
Network Ports:	<ul style="list-style-type: none"> • (8) 10/100 Copper Ports (RJ-45) with Auto-Negotiate, Auto-MDI/MDI-X • (2) 100Mbps Fiber Ports (MM = ST or SC, SM = SC)
Switching Architecture:	<ul style="list-style-type: none"> • Store-and-Forward
Switching Capacity:	<ul style="list-style-type: none"> • 26Gbps (non-blocking)
MAC Address Table:	<ul style="list-style-type: none"> • 8K
Maximum Frame Size:	<ul style="list-style-type: none"> • 9.6K Bytes (Jumbo Frames)
Flow Control:	<ul style="list-style-type: none"> • Back pressure (Half-Duplex) • IEEE 802.3x Pause Frame (Full-Duplex)
LED Indicators:	<ul style="list-style-type: none"> • Power: On - Green • Copper Ports: Link/Activity - Amber

Industrial 10-Port 10/100Base Managed Switch with (2) 100Base Fiber Ports

SF7105xM2

Layer 2 Management Functions

Management Interface:	<ul style="list-style-type: none"> • Console • CLI • Telnet • Web - SSH/SSL, SNMP v1, v2c, v3c
Port Configuration:	<ul style="list-style-type: none"> • Enable/Disable • Auto-negotiation • Full and Half Duplex mode selection • Flow control
Port Mirroring:	<ul style="list-style-type: none"> • Tx/Rx: Many-to-1 monitoring
Bandwidth Control:	<ul style="list-style-type: none"> • Ingress/Egress rate control
VLAN:	<ul style="list-style-type: none"> • IEEE 802.1q tag-based VLAN • Up to 256 VLAN groups • 4094 VLAN IDs • Port-based VLAN • MAC-based VLAN • Protocol-based VLAN • MVR (Multiple VLAN Registration) • Q-in-Q Tunneling
Link Aggregation:	<ul style="list-style-type: none"> • IEEE 802.3ad LACP/Static Trunk • Up to 5 groups
Quality of Service (QoS):	<ul style="list-style-type: none"> • 8 priority queues • Traffic classification: IEEE 802.1p, IP DSCP
Multicasting/IGMP:	<ul style="list-style-type: none"> • IGMP/MLD Snooping (v1, v2, v3) with Query Support
Access Control List:	<ul style="list-style-type: none"> • IP-based ACL/MAC-based ACL • 256 entries
SNMP MIBs:	<ul style="list-style-type: none"> • RFC-1213 MIB-II • RFC-2819 RMON MIB (Group 1, 2, 3, 9)



**Industrial 10-Port 10/100Base Managed Switch
with (2) 100Base Fiber Ports**

SF7105xM2

Electrical, Mechanical, Environmental

DC Power Input Voltage:	<ul style="list-style-type: none"> • Dual 9 ~ 52VDC • Auto-sensing
Power Consumption:	<ul style="list-style-type: none"> • 9 Watts (Full Load)
Dimensions:	<ul style="list-style-type: none"> • 6.14 x 4.52 x 2.36 inches (156 x 114.8 x 60 mm)
Case:	<ul style="list-style-type: none"> • IP44 Metal
Mounting:	<ul style="list-style-type: none"> • DIN Rail
MTBF:	<ul style="list-style-type: none"> • >100,000 hours
Operating Temperature:	<ul style="list-style-type: none"> • -40°C ~ +80°C
Storage Temperature:	<ul style="list-style-type: none"> • -40°C ~ +80°C
Relative Humidity:	<ul style="list-style-type: none"> • 0% ~ 95% (non-condensing)

