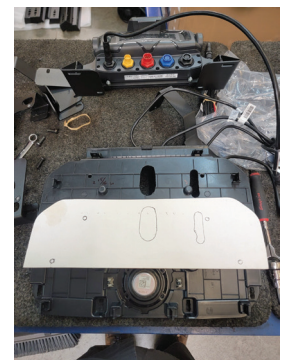
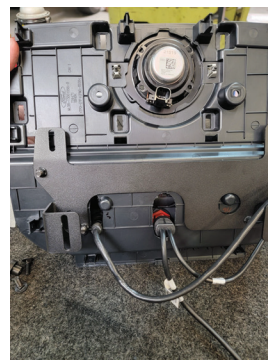


FOLD DOWN GPS MOUNT INSTRUCTIONS

Gen 3 Raptor (2021 - 2023)

1. Remove the trim bezel that wraps around the stereo. This is done by gently pulling on it, or prying out with plastic trim tools. It is just held on with clips, but the clips are stiff.
2. Remove the cover off the speaker on the dash, this is again done by using plastic trim tools and gently pulling up on it. It is also held in with clips, not as stiff as the bezel ones.
3. Next to the speaker are two screws, remove those with an 8mm socket, and then you can remove the dash piece.
4. The dash piece is removed by pulling up on it both by gently lifting and using plastic pry tools. The clips in the back corners can be tricky. Once all the clips have been released, unplug the speaker and set the dash piece aside. Using the supplied template, cut out the two slots for the cables to pass through.
5. Using an 8mm socket, remove the 4 screws holding on the brace for the stereo, leave the brace in place, save the bolts for reuse.
6. Place the under dash support bracket down on top of the stereo brace. Place the supplied spacers under the front 2 tabs and loosely install the supplied longer screws with a 7mm. Reinstall 2 of the factory bolts into the front slotted holes of the under dash support bracket. Once all 4 bolts are started, we can recommend setting the under dash support bracket so that the slot on the front 2 bolts is just barely covered by the flange head of the supplied bolt. This should give proper spacing for the top brackets, then tighten the bolts down.
7. Using the supplied template, mark and drill holes into the dash piece that was removed in Step 4, we recommend under drilling the holes first, to verify alignment of the under dash plate, then through drill with a 1/4" drill bit. Once holes are drilled, reinstall dash piece making sure that the speaker is plugged in and all clips are resealed. Reinstall the 2 screws on either side of the dash speaker. Then reinstall the cover over the dash speaker.
8. Mount the GPS ring to your GPS, on the HDS-7, this is done by gently popping the bezel off around the face, and then the ring will install from the rear of the GPS with the 4 supplied screws and nuts.
9. Install the pivot brackets to the GPS mount, then install the assembly to the under dash mount using the black button head bolts. The magnetic mic mount will install on top of the pivot brackets. The pivot bolts should be snugged up enough to allow the GPS to pivot, but not too loose that it rattles. The spacer with the square is designed to space the carriage bolt off of the bracket so the bolt can be properly tightened to keep the GPS in the up or down position.



V.5.7.2024



562-427-8177



www.pciraceradios.com



6185 Phyllis Drive, Cypress, CA 90630

