

MAVERICK R RADIO ONLY BRACKET

PROVIDED HARDWARE

- (4) M5x16 screws
- (4) M5 washers
- (4) M5 nylock nuts
- (7) M4x12 bolts

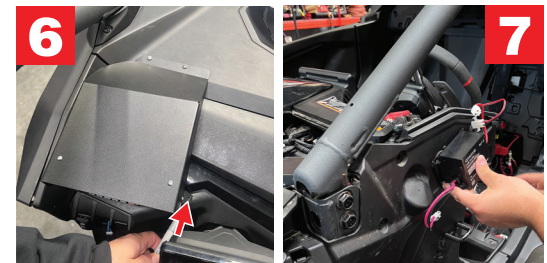
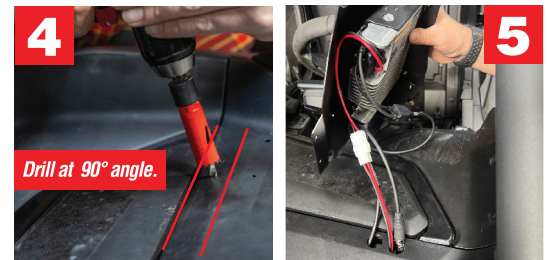
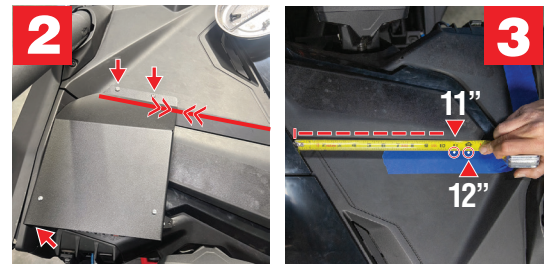
TOOLS REQUIRED

- Silver Sharpie
- Tape Measure
- Power Drill
- 5/32 drill bit
- 3/4" hole saw
- 8 mm open ended wrench
- 2.5 mm Allen wrench
- 3 mm Allen wrench
- Deburring tool or utility knife

TECH TIP: We recommend using protective eyewear and gloves during installation. Please use caution when cutting materials within the car, especially when cutting into areas with wiring harnesses underneath or behind the panel. See intercom instructions for cable routing recommendations and make sure to leave enough slack in the cables for service accessibility.

INSTRUCTIONS

- 1) Start by assembling the top cover and front panel of your new bracket, attach the 2 pieces with 3 supplied M4 hardware.
- 2) Using the assembled bracket as a template, place on the dash and line up with the panel lines on the car. Mark 3 of the 4 mounting holes (2 in front, 1 lateral) with silver sharpie and drill using 5/32" drill bit. *PRO TIP: DO NOT mark or drill the 4th hole near the steering column until the bracket is bolted in place in Step 5.*
- 3) Measure from center access panel marking at 11" & 12" with the silver Sharpie then drill 2 pilot holes with a 5/32" drill bit.
- 4) With a 3/4" hole saw, drill out access holes. One for coax and the other for the power and radio cables. Deburr holes. *PRO TIP: Do not drill too fast or deep, and make sure to drill at a 90° angle to the access panel. There is a secondary panel beneath the access panel to avoid.*
- 5) Secure the radio to the beauty ring bracket using the hardware provided with the radio. Route the radio harness through same the hole as the power cable and connect to your intercom. Connect the power cable and coax to the radio, then secure the mounted radio to the main bracket assembly.
- 6) Using the supplied M5 hardware, secure the bracket to the dash using the first 3 previously drilled holes (from Step 2), then drill out the 4th mounting hole (near the steering column) and secure to the dash.
- 7) If installing a KLF-2: Open the driver side hinged panel and remove the 3 Torx bolts to access the underside of the dash and interior of the disassembled panel. Locate the 2 plastic standoffs on interior facing side of the disassembled panel and remove the standoffs. Use the KLF-2 as a template. Holding it up to the panel, mark the holes with the silver Sharpie and drill out using a 3/16" drill bit. Install the KLF-2 on the interior of the access panel using 3/16" rivets.



V.3.29.2024



562-427-8177



www.pciraceradios.com



6185 Phyllis Drive, Cypress, CA 90630

