

TIPS FOR PROPER USAGE

Get the most out of your Aroma360 experience

- Avoid windows or air vents so the scent can circulate through the surrounding area. Place the diffuser in an area on its own so the scent can flow freely
- Always position the diffuser upright so the Aroma360 oil can diffuse upward into the air
- Your Aroma360 diffuser will only work properly when using Aroma360 oils. Use of any other oil is not recommended and will void the warranty.

MAINTENANCE

The Aroma360 diffuser should be cleaned every 1-2 months to ensure optimal performance. To clean the inner workings of the device please follow these steps:

- 1 Fill the empty Aroma360 bottle that came with your diffuser with rubbing alcohol to the second line from the bottom.
- 2 Screw the alcohol filled bottle into the diffuser.
- 3 Run the diffuser for 15 minutes to ensure the alcohol can filter through the whole device.

Unplug the device from the wall outlet and keep the diffuser in an upright position. Wipe the device with a damp cloth to remove oil stains and fingerprints. Avoid using any harsh or abrasive cleaning products.



REPLACING THE NOZZLE

To change the nozzle, unplug the diffuser, remove the bottle of oil and carefully pull out the clear tube. Gently pull out the black nozzle by wiggling it gently using a pair of tweezers.



Replace it with a new nozzle and ensure the nozzle is pressed very firmly into the top of the diffuser. The tube can be reinserted into the nozzle.

It is very important that you put the tube into the correct opening of the nozzle otherwise the unit will not diffuse scent. Within the nozzle there is a small round tube holder that the tube needs to be firmly secured into.

TIP: If you are having difficulty seeing the tube holder inside the nozzle, hold a flashlight into the nozzle to increase visibility.

- 3 Insert the Aroma360 aroma oil of your choice, reconnect both halves of the diffuser and plug it into the wall outlet. You're ready to begin scenting!

SAFETY

To ensure safe usage, follow these precautions:

- The Aroma360 diffuser should always be used in an upright position. Do not tilt the diffuser as oil can spill inside the device and damage the mechanics.
- Use of the Aroma360 diffuser and aroma oils requires adult supervision.
- Do not wet the device or place it near any liquids, sinks, bath tubs, or outdoors.
- Do not use the device with any power cord other than the one provided with your diffuser. Position the power cord to prevent it from being a tripping hazard.
- Before connecting your Aroma360 diffuser to a power outlet, check that the voltage label specified on the adapter is the same as the power supply.
- Do not run the unit on empty. Unless there is oil in the bottle or alcohol for cleaning, turn the device off.
- Do not ingest any Aroma360 oils.
- Do not apply any Aroma360 oils to any part of the skin. Keep oils out of contact with eyes, ears, nose, mouth and any other bodily opening. If contact does occur, flush with water immediately until all traces of oil have been removed entirely from the area.
- Do not dilute the Aroma360 aroma oils with water.

All Aroma360 diffusers come with a twelve month limited warranty.*

**PLEASE REGISTER
YOUR NEW AROMA360 PRODUCT AT
Aroma360.com/pages/warranty**

*Please note all Aroma360 diffusers are specifically designed to be used with Aroma360 oils. Using any other oils will VOID the twelve month warranty.

If you did not purchase your Aroma360 diffuser through Aroma360.com and you have a claim under this warranty, do not return the item to the place of purchase. Please call our customer service number 561-206-0053.

*PRODUCTS MUST BE REGISTERED WITHIN FOURTEEN (14) DAYS OF PURCHASE. FOR ALL TERMS AND CONDITIONS OF PURCHASE & WARRANTY PLEASE VISIT AROMA360.COM

AROMA360
THE ART of SCENT

INSTRUCTION MANUAL



AROMA360

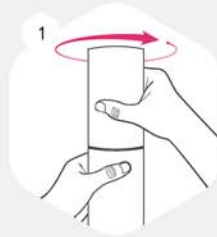
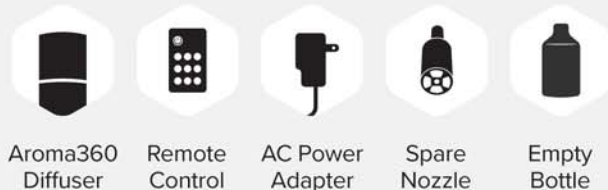
THE ART of SCENT

Welcome to the world of Aroma360 scenting! With your Aroma360 scent diffuser, you'll be able to create a unique ambiance in a few simple steps.

Through the advanced technology of Cold-Air Diffusion, your discreet and sleek Aroma360 diffuser is a convenient and practical solution to enhance any space you desire.

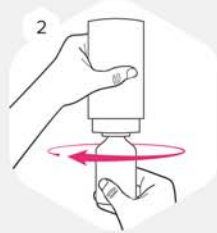
Please begin by reading the Tips, Safety, and Maintenance sections of this instruction manual to get the best Aroma360 experience.

PACKAGE CONTENTS



SETTING UP YOUR AROMA360 DIFFUSER

To open your Aroma360 diffuser rotate the upper half of your device in a counterclockwise motion, while firmly holding the bottom half.

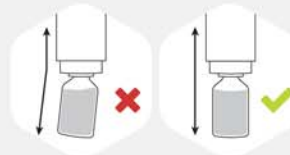


Remove the empty Aroma360 bottle from the diffuser by turning it clockwise. The empty bottle is included in your equipment to be used in the cleaning process of your diffuser.

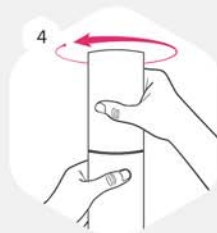
Please refer to the Maintenance section of this instruction manual to learn about the proper cleaning procedure.



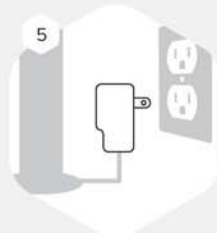
Once you have selected the Aroma360 scenting oil of your choice, carefully screw the bottle counterclockwise into the diffuser.



Important! Make sure the bottle is screwed in tight and parallel to the top half of the Aroma360 diffuser.



Once you have screwed on the Aroma360 oil, close the unit tightly by sliding the upper half back into place and turning clockwise.



Connect the power adapter into the diffuser's power port and plug it into a 110V power outlet. Position the power cord to prevent it from being a tripping hazard.



DIFFUSER LED COLOR KEY

- Blue LED Light - Indicates the device is powered on
- Green LED Light - Indicates the scent is being diffused
- Red LED Light - Flashes when any button on the remote control is being pressed



REMOTE CONTROL FUNCTIONS

- On and Off - Powers the device On and Off
- Aroma Mode - Continuous spray at "base" density
- Density + (plus) - Increases aroma's density by 10%. Press 10 times for maximum density
- Density - (minus) - Decreases aroma's density by 10%. Press 10 times for minimum density

Pressing "Aroma" will cause the unit will work continuously. Adjust the settings according to the density desired.

The blue buttons allow you to control the scent concentration by adjusting the scenting interval.

The options are: 20%, 35%, 50%, 65%, 80%, 95%

- 20% - Diffuser will diffuse scent for 40s and pause for 160s
- 50% - Diffuser will diffuse scent for 100s and pause for 100s
- 95% - Diffuser will diffuse scent for 180s and pause for 10s

REMOTE CONTROL TIME SETTINGS

- 1h 4h 8h Allows the diffuser to run continuously for a specified amount of hours.

RESETTING THE REMOTE CONTROL

Please follow these steps to reset the remote control to its factory settings:

- Unplug the diffuser from the power outlet.
- Hold down the blue button on the remote labeled "35%" for 5 seconds while plugging the diffuser back into the wall outlet. A red light will flash on the diffuser.
- Avoid pressing any buttons on the remote for 10 seconds as it takes time for the receiver within the device to reset itself.