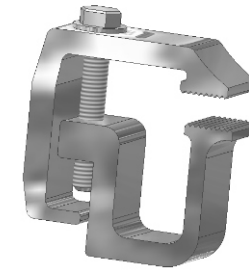
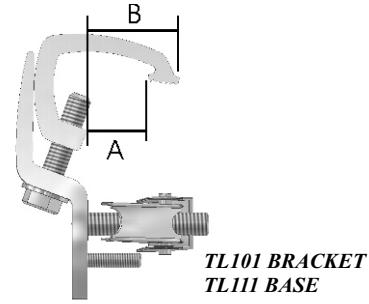


#3TL111S-24/B BAGGED 24

Caps or lids with flat rails.

A= 7/8"
B= 1-1/2"

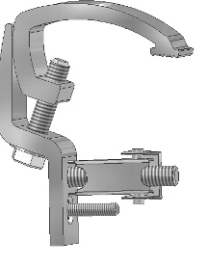
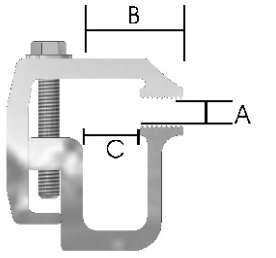
REPLACES THE
AC110USP499 & AC111IUS



#32001-50 ASSEMBLED 50
#32001-50/B BAGGED 50
#32001-50/U UNASSEMBLED 50
#32001/4 4 PCS. CARDED 48

Designed for mounting truck caps or covers with fiberglass or aluminum rails.

A= 0 to 7/8" Clamping Range
B= 1-3/4" Major Reach
C= 1" Minor Reach

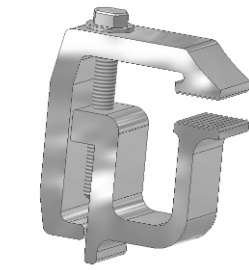
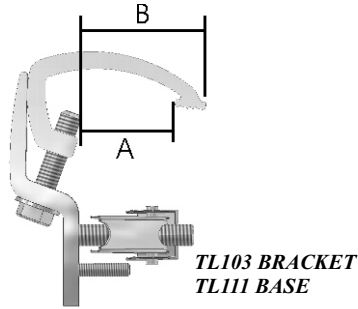


#3TL111M-24/B BAGGED 24

Caps or lids with flat rails that need extra reach.

A= 1-5/8"
B= 2-1/8"

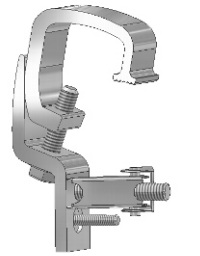
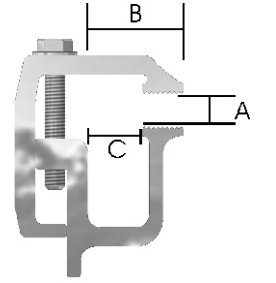
REPLACES THE
AC110UMP499 & AC111IUM



#32002-50 ASSEMBLED 50
#32002-50/B BAGGED 50
#32002-50/U UNASSEMBLED 50
#32002/4 4 PCS. CARDED 48

Designed for mounting truck caps or covers with fiberglass or aluminum rails.

A= 0 to 1-3/8" Clamping Range
B= 1-3/4" Major Reach
C= 1" Minor Reach

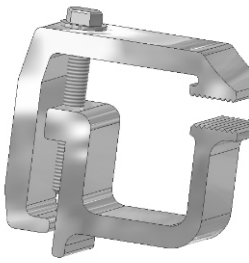
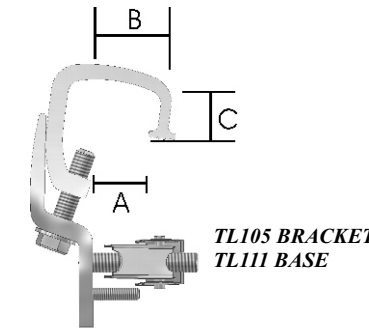


#3TL111SL-24/B BAGGED 24

Caps or lids with tubed rails.

A= 7/8"
B= 1-1/2"
C= .854 Depth

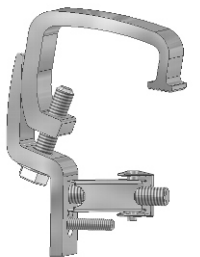
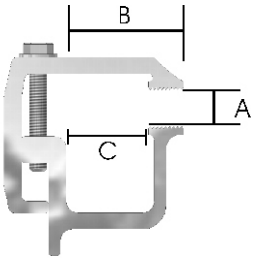
REPLACES THE
AC1110SLP499 & AC111IUSL



#32007-24 ASSEMBLED 24
#32007-24/U UNASSEMBLED 24

Specialty clamp designed with extra reach for mounting truck caps with fiberglass or aluminum rails.

A= 0 to 1-3/8" Clamping Range
B= 2-1/2" Major Reach
C= 1-3/4" Minor Reach
1-3/4" cut width

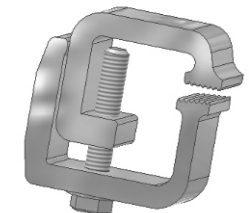
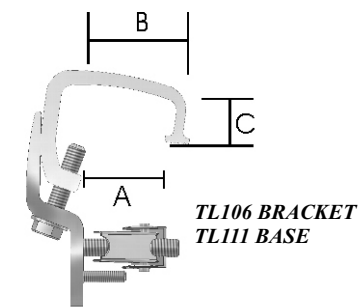


#3TL111LL-24/B BAGGED 24

Caps or lids with tubed rails needing extra reach.

A= 1-3/8"
B= 2"
C= .854 Depth

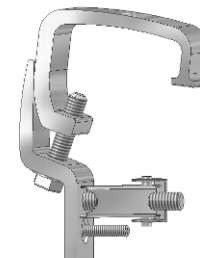
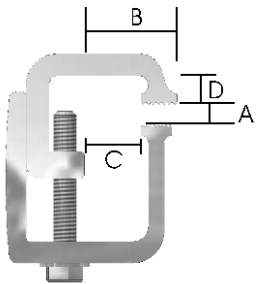
REPLACES THE
AC1110ULLP499 & AC111IULL



#32027M-50/U UNASSEMBLED 50
#32027M/4 4 PCS. CARDED 48

Designed for mounting truck caps or covers with aluminum or fiberglass rails.

A= 0 to 1-1/8" Clamping Range
B= 1-1/2" Major Reach
C= 15/16" Minor Reach
D= 1/2" Depth of Reach

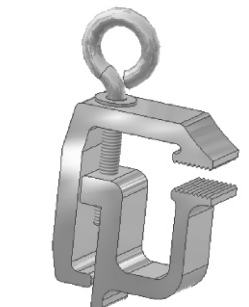
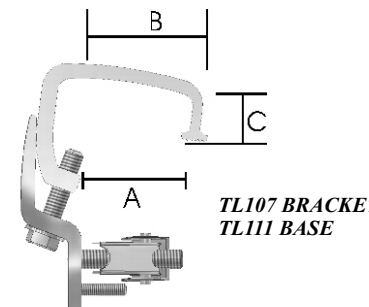


#3TL111XL-24/B BAGGED 24

Caps or lids with tubed rails needing extra reach.

A= 1-5/8"
B= 2-1/8"
C= .854 Depth

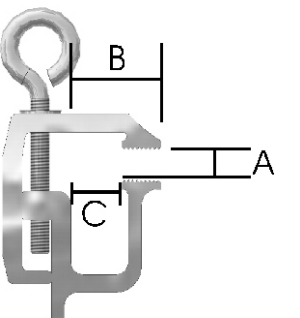
REPLACES THE
AC1110XLP499 & AC111IUXL



#32032-50/U UNASSEMBLED 50

Dual purpose clamp designed for mounting truck caps with fiberglass or aluminum rails. Comes equipped with a tie-down for hauling.

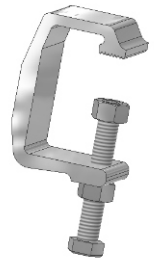
A= 0 to 1-3/8" Clamping Range
B= 1-3/4" Major Reach
C= 1" Minor Reach



Dual Purpose Clamp. Designed for mounting truck caps with fiberglass or aluminum rails to Ford Sport Trac & Chevy Sportside trucks. Remove existing plug on the Sportside and on the Sport Trac the existing screw, install TITE-LOK® bracket with screws provided.

C-STYLE AND SHIPPING

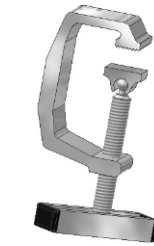
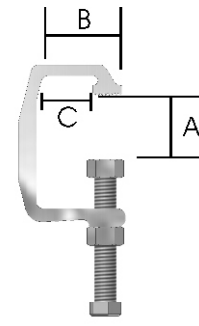
FORD F150 CLAMPS



#3117-150 UNASSEMBLED 150
#3117/4 4 PCS. CARDED 48
#3117/6 6 PCS. CARDED 72

Deluxe design for mounting aluminum rail truck caps or covers.

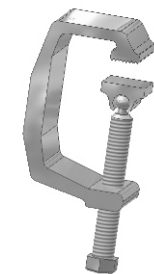
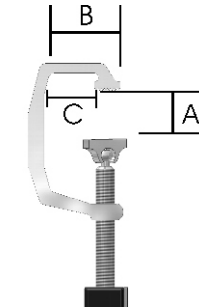
A= 0 to 1-3/4" Clamping Range
 B= 1-1/2" Major Reach
 C= 3/4" Minor Reach



#3118-100 ASSEMBLED 100
#3118/4 4 PCS. CARDED 48

Deluxe design for mounting aluminum rail truck caps or covers.

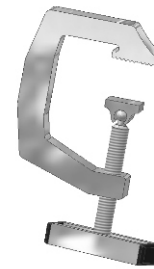
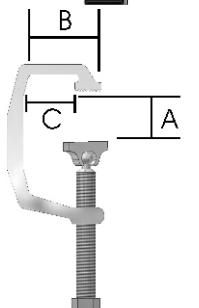
A= 0 to 1-3/4" Clamping Range
 B= 1-1/2" Major Reach
 C= 3/4" Minor Reach



#3118-NH ASSEMBLED 100
(NO HANDLE)

Deluxe design for mounting aluminum rail truck caps or covers.

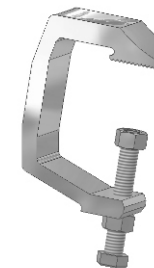
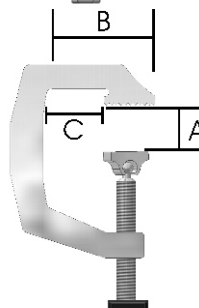
A= 0 to 1-3/4" Clamping Range
 B= 1-1/2" Major Reach
 C= 3/4" Minor Reach



#3120-50 ASSEMBLED 50
#3120-NH50 ASSEMBLED 50
(NO HANDLE)
#3120/1 1 PC. CARDED 12
#3120/2 2 PCS. CARDED 24

Designed for cap racks, shipping or mounting truck caps or covers with aluminum or fiberglass rails.

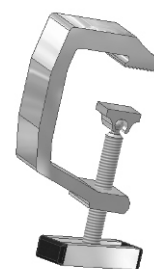
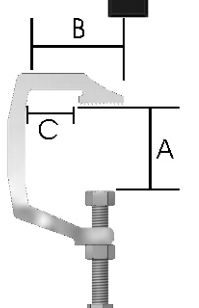
A= 0 to 2" Clamping Range
 B= 2-3/16" Major Reach
 C= 1-1/4" Minor Reach



#3122-100 UNASSEMBLED ONLY 100

Designed for mounting aluminum or fiberglass rail truck caps or covers.

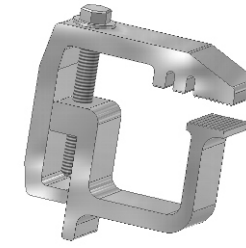
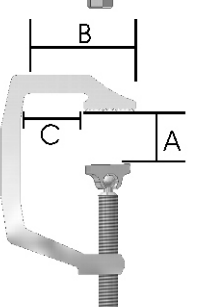
A= 0 to 2-1/2" Clamping Range
 B= 2-3/16" Major Reach
 C= 1-1/4" Minor Reach



#3123-50 ASSEMBLED 50
#3123-NH50 ASSEMBLED 50
(NO HANDLE)

Designed for mounting aluminum or fiberglass rail truck caps or covers.

A= 0 to 2-1/4" Clamping Range
 B= 2-3/16" Major Reach
 C= 1-1/4" Minor Reach

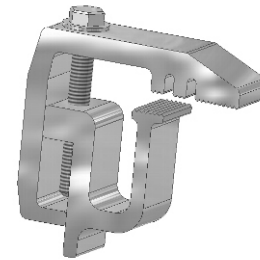
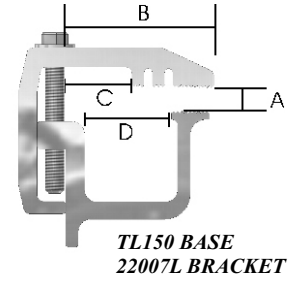


#3TL150L-50 ASSEMBLED 50
#3TL150L-50/U UNASSEMBLED 50

Designed for mounting truck caps with skirted rails requiring a deeper reach under the truck rail.

A= 0 to 1-3/8" Clamping Range
 B= 2-1/2" Major Reach
 C= 1" Minor Reach Base
 D= 1-3/4" Minor Reach Bracket

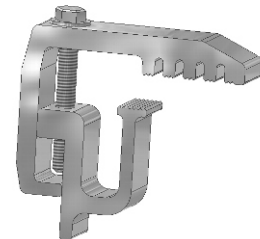
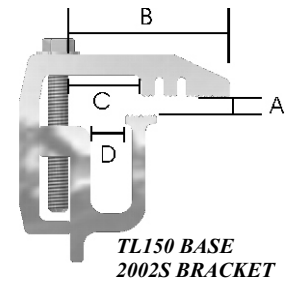
REPLACES SK2



#3TL150S-50 ASSEMBLED 50
#3TL150S-50/U UNASSEMBLED 50

Designed for **2004 FORD F150**. Gives you the extra reach needed with our new shorter bracket.

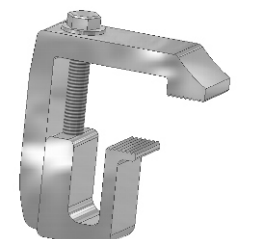
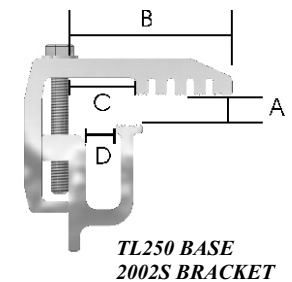
A= 0 to 1-3/8" Clamping Range
 B= 2-1/2" Major Reach
 C= 1" Minor Reach Base
 D= 5/8" Minor Reach Bracket



#3TL250S-50 ASSEMBLED 50
#3TL250S-50/U UNASSEMBLED 50

Designed for **2004 FORD F150**. Gives you the extra reach needed with our new shorter bracket.

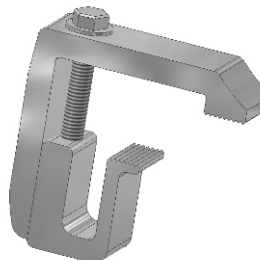
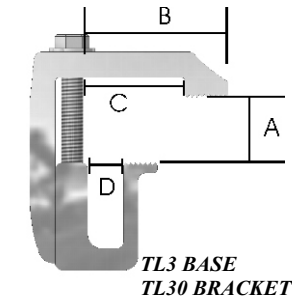
A= 0 to 1-3/8" Clamping Range
 B= 3" Major Reach
 C= 1" Minor Reach Base
 D= 5/8" Minor Reach Bracket



#3TL3/30-50 ASSEMBLED 50
#3TL3/30-50/U UNASSEMBLED 50

Designed for **2004 FORD F150**. Gives you the extra reach needed with shorter bracket.

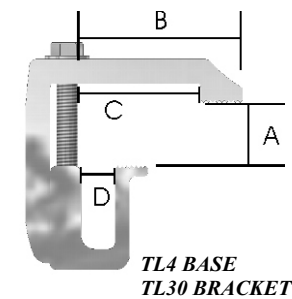
A= 0 to 1-3/4" Clamping Range
 B= 2-1/2" Major Reach
 C= 1-3/4" Minor Reach Base
 D= 5/8" Minor Reach Bracket



#3TL4/30-50 ASSEMBLED 50
#3TL4/30-50/U UNASSEMBLED 50

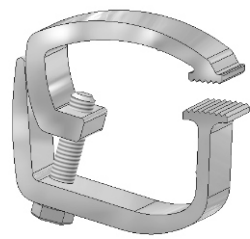
Designed for **2004 FORD F150**. Gives you the extra reach needed with shorter bracket.

A= 0 to 1-3/4" Clamping Range
 B= 2-15/16" Major Reach
 C= 2-3/16" Minor Reach Base
 D= 5/8" Minor Reach Bracket



ROCKING CLAMPS

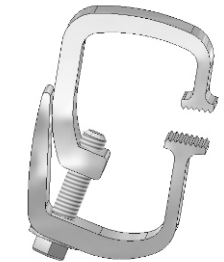
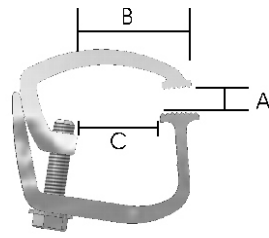
C-STYLE AND SHIPPING



- #3TL103-50 ASSEMBLED 50
- #3TL103-50/U UNASSEMBLED 50
- #3TL103-W2.5 WITH 2-1/2" BOLT 50
- #3TL103-W2.5/U WITH 2-1/2" BOLT 50

THE "ROCKING" CLAMPS
Mounts fiberglass or aluminum truck caps
REVISED TITE-LOK® DESIGN
REPLACES AC103

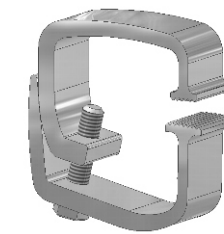
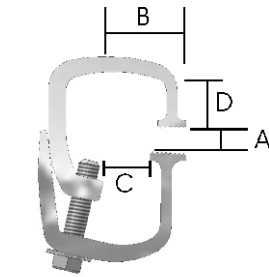
A= 0 to 7/8" Clamping Range
B= 2-3/4" Major Reach
C= 1-1/2" Minor Reach



- #3TL105-50 ASSEMBLED 50
- #3TL105-50/U UNASSEMBLED 50
- #3TL105-W2.5 WITH 2-1/2" BOLT 50
- #3TL105-W2.5/U WITH 2-1/2" BOLT 50

THE "ROCKING" CLAMPS
Mounts fiberglass or aluminum truck caps
REVISED TITE-LOK® DESIGN
REPLACES AC105

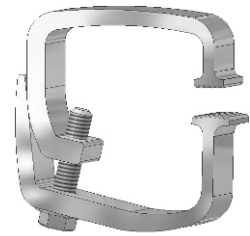
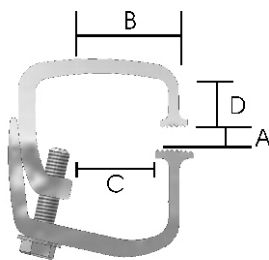
A= 0 to 7/8" Clamping Range
B= 1-3/4" Major Reach
C= 1" Minor Reach
D= .854 Depth of Bracket



- #3TL106-50 ASSEMBLED 50
- #3TL106-50/U UNASSEMBLED 50
- #3TL106-W2.5 WITH 2-1/2" BOLT 50
- #3TL106-W2.5/U WITH 2-1/2" BOLT 50

THE "ROCKING" CLAMPS
Mounts fiberglass or aluminum truck caps
REVISED TITE-LOK® DESIGN
REPLACES AC106

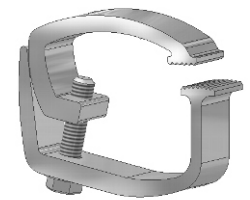
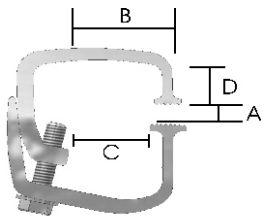
A= 0 to 7/8" Clamping Range
B= 2" Major Reach
C= 1-1/2" Minor Reach
D= .854 Depth of Bracket



- #3TL107-50 ASSEMBLED 50
- #3TL107-50/U UNASSEMBLED 50

THE "ROCKING" CLAMPS
Mounts fiberglass or aluminum truck caps
REVISED TITE-LOK® DESIGN
REPLACES AC107

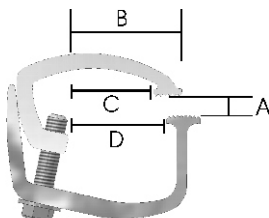
A= 0 to 7/8" Clamping Range
B= 2-1/4" Major Reach
C= 1-3/4" Minor Reach
D= .854 Depth of Bracket



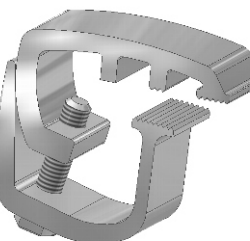
- #3TL1043-50 ASSEMBLED 50
- #3TL1043-50/U UNASSEMBLED 50
- #3TL1043-W2.5 WITH 2-1/2" BOLT 50
- #3TL1043-W2.5/U WITH 2-1/2" BOLT 50

THE "ROCKING" CLAMPS
Mounts fiberglass or aluminum truck caps
REVISED TITE-LOK® DESIGN
REPLACES AC1043

A= 0 to 7/8" Clamping Range
B= 2-3/4" Major Reach
C= 1-1/2" Minor Reach Bracket
D= 1-3/4" Minor Reach Base



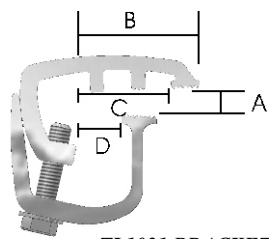
TL103 BRACKET
TL107 BASE



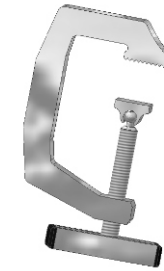
- #3TL1031-50 ASSEMBLED 50
- #3TL1031-50/U UNASSEMBLED 50
- #3TL1031-W2.5 WITH 2-1/2" BOLT 50
- #3TL1031-W2.5/U WITH 2-1/2" BOLT 50

THE "ROCKING" CLAMPS
Mounts fiberglass or aluminum truck caps
REVISED TITE-LOK® DESIGN
REPLACES AC1031

1997 and Newer **FORD** clamp.
Designed for mounting truck caps
or lids when you need extra reach.
(Includes Super Duty)



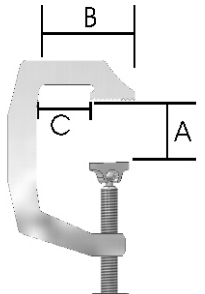
TL1031 BRACKET
TL101 BASE



- #3125-50 ASSEMBLED 50
- #3125-NH50 ASSEMBLED 50
- (NO HANDLE)
- #3125/1 1 PCS. CARDED 12

Designed for cap racks, shipping
or mounting truck caps or covers
with aluminum or fiberglass rails.

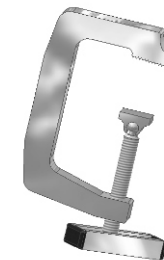
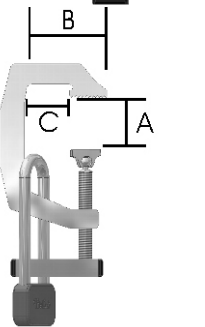
A= 0 to 2-1/2" Clamping Range
B= 2-3/16" Major Reach
C= 1-1/4" Minor Reach



- #3125L-50 ASSEMBLED 50
- (THEFT DETERRENT LOCKING CLAMP)

Designed for cap racks, shipping or mounting truck caps or covers
with fiberglass or aluminum rails. Comes with holes for mounting a
padlock. (Lock not included)

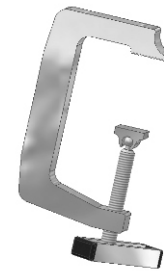
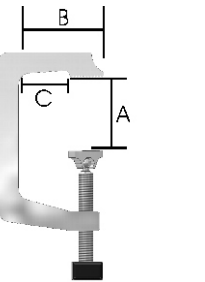
A= 0 to 2-1/2" Clamping Range
B= 2-3/16" Major Reach
C= 1-1/4" Minor Reach



- #3130-50 ASSEMBLED 50
- #3130-NH50 ASSEMBLED 50
- (NO HANDLE)
- 3130/1 1 PC. CARDED 12

Designed for cap racks, shipping
or mounting truck caps or covers
with wood or fiberglass rails.

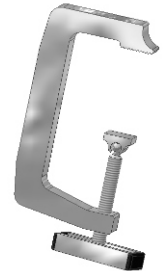
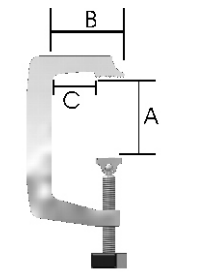
A= 0 to 3" Clamping Range
B= 2-1/4" Major Reach
C= 1-7/16" Minor Reach



- #3135-50 ASSEMBLED 50

Designed for shipping or mounting truck caps
or covers with extra heavy wood rails.

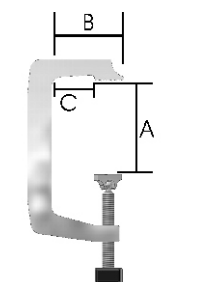
A= 1 to 3-1/2" Clamping Range
B= 2-1/4" Major Reach
C= 1-7/16" Minor Reach



- #3140-W2.5 ASSEMBLED 50

Designed for shipping or mounting truck cap
or covers with extra heavy wood rails.

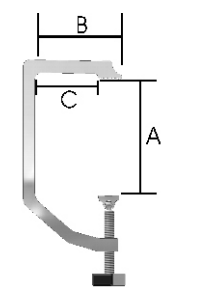
A= 2-3/4" to 4" Clamping Range
B= 2-9/32" Major Reach
C= 1-19/32" Minor Reach



- #3150-W2.5 ASSEMBLED 25

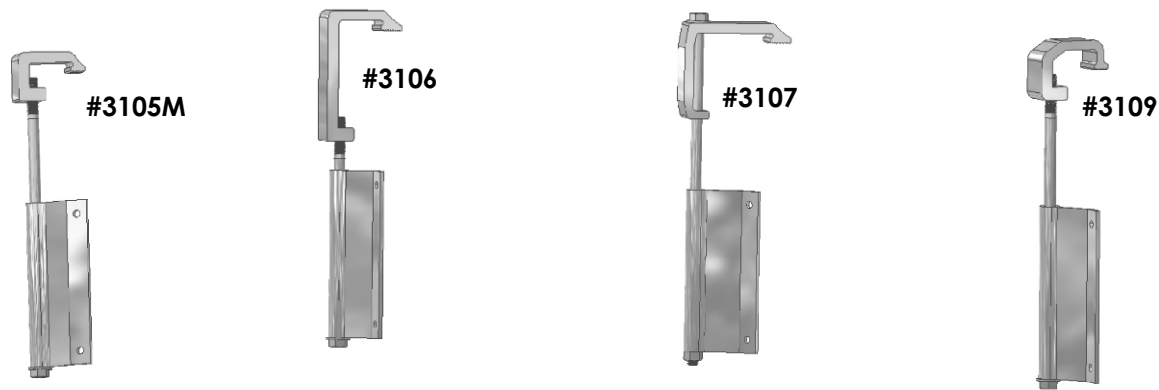
Designed for shipping or mounting truck caps
or covers with extra heavy wood rails.

A= 4-1/4" to 5-1/2" Clamping Range
B= 3-9/32" Major Reach
C= 2-19/32" Minor Reach
2" cut width



FORD CLAMPS

ROCKING CLAMPS

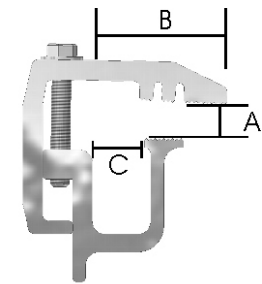


#3105M
#3106
#3107
#3109

Designed for '97 to '99 Fords.
Gives you the extra reach needed
for the F150 and Superduty Fords.

#3TL150-50 ASSEMBLED 50
#3TL150-50/U UNASSEMBLED 50
#3TL150/4 4 PCS. CARDED 48

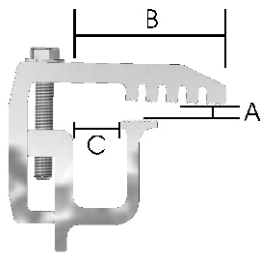
A= 0 to 1-3/8" Clamping Range
B= 2-1/2" Major Reach
C= 1" Minor Reach



Designed for '99 and newer
Ford Heavy Duty 250 & 350 Trucks.

#3TL250-50 ASSEMBLED 50
#3TL250-50/U UNASSEMBLED 50
#3TL250/4 4 PCS. CARDED 48

A= 0 to 1-3/8" Clamping Range
B= 3" Major Reach
C= 1" Minor Reach

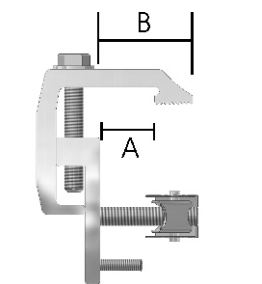


FORD SPORT TRAC & CHEVY SPORTSIDE (99 & NEWER)

#32091-24/B BAGGED 24

A= 1-1/16"
B= 1-3/4"

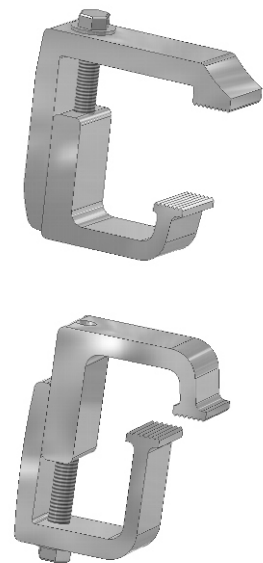
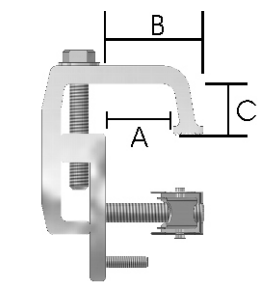
Dual Purpose Clamp. Designed for mounting aluminum or fiberglass railed caps to Chevy Sportside & Ford Sport Trac truck beds. Remove existing screw from bedside on the Sport track and plug on the sportside, install TITE-LOK bracket with screws provided.



#32092-24/B BAGGED 24

A= 1-5-16"
B= 1-15/16"
C= 1" Depth

Dual Purpose Clamp. Designed for mounting truck caps and covers to Chevy Sportside & Ford Explorer Sport Trac truck beds.

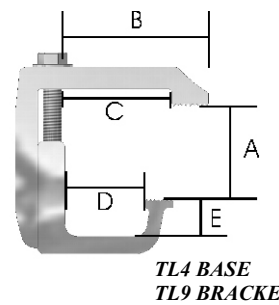


#3TL409-50 ASSEMBLED 50
#3TL409-50/U UNASSEMBLED 50

Shipping Clamp

A= 7/8" to 2-1/2" Clamping Range
B= 2-15/16" Major Reach
C= 2-3/16" Minor Reach Base
D= 1-5/8" Minor Reach Bracket
E= 3/4" Depth of Bracket

REPLACES THE G-409

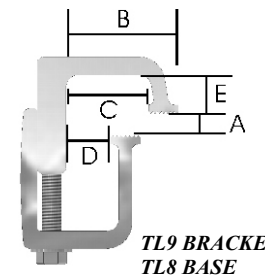


#3TL908-50 ASSEMBLED 50
#3TL908-50/U UNASSEMBLED 50

Designed for mounting truck caps or lids with fiberglass or aluminum rails.

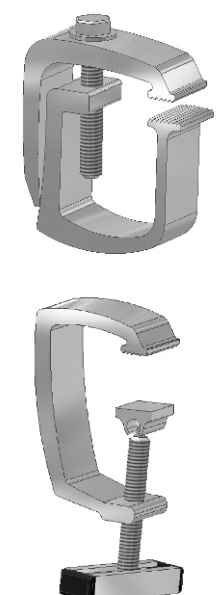
A= 0 to 1-1/4" Clamping Range
B= 2-3/16" Major Reach
C= 1-5/8" Minor Reach Bracket
D= 7/8" Minor Reach Base
E= 3/4" Depth of Bracket

REPLACES THE G-908



ACE of DIAMONDS

BEATS the King of Hearts

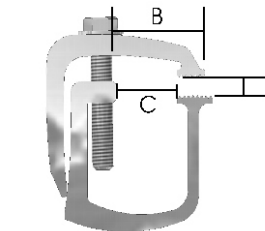


#3TLAD-50 ASSEMBLED 50
#3TLAD-50/U UNASSEMBLED 50

Designed for mounting truck caps with fiberglass or aluminum rails.

A= 0 to 1-3/4" Clamping Range
B= 1-5/8" Major Reach
C= 1-1/8" Minor Reach

IMPROVED DESIGN
REPLACES THE KHI

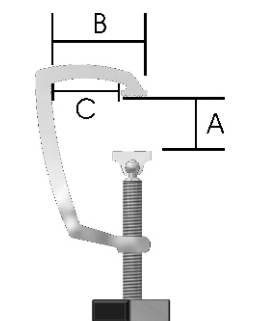


#3119-100 ASSEMBLED 100

Designed for mounting truck caps or lids with fiberglass or aluminum rails.

A= 0 to 2-1/2" Clamping Range
B= 1-7/8" Major Reach
C= 1-3/8" Minor Reach

IMPROVED DESIGN
REPLACES THE AC102DA

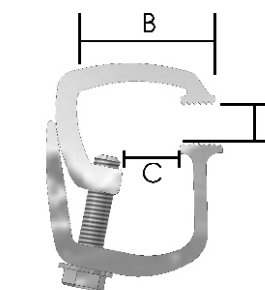


#3TL101-50 ASSEMBLED 50
#3TL101-50/U UNASSEMBLED 50
#3TL101-W2.5 WITH 2-1/2" BOLT 50
#3TL101-W2.5/U WITH 2-1/2" BOLT 50

THE "ROCKING" CLAMPS
Mounts fiberglass or aluminum truck caps
REVISED TITE-LOK® DESIGN
REPLACES AC101

A= 0 to 7/8" Clamping Range
B= 2" Major Reach
C= 1" Minor Reach

The "ROCKING" Clamps allow for rotation of the top bracket for easy installation without taking apart the clamp (for most applications).

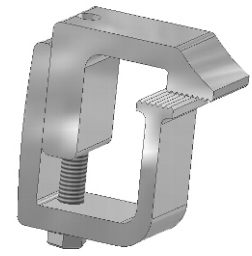


#3TL102-50 ASSEMBLED 50
#3TL102-50/U UNASSEMBLED 50

THE "ROCKING" CLAMPS
Mounts fiberglass or aluminum truck caps
REVISED TITE-LOK® DESIGN
REPLACES AC102

A= 0 to 7/8" Clamping Range
B= 2" Major Reach
C= 1" Minor Reach
1" cut width

RAIL HUGGING CLAMPS

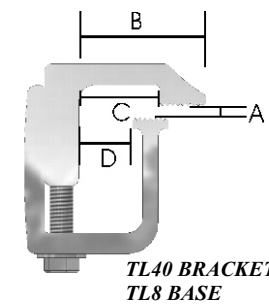


#3TL48-50 ASSEMBLED 50
#3TL48-50/U UNASSEMBLED 50

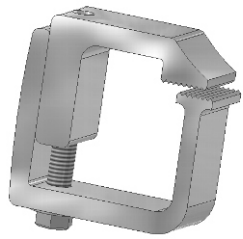
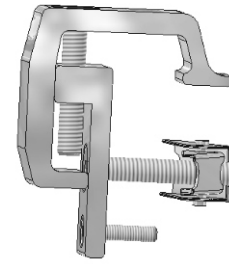
Low Profile Clamp for mounting truck caps or lids with fiberglass or aluminum rails.

A= 0 to 1-1/4" Clamping Range
B= 2" Major Reach
C= 1-3/8" Minor Reach Bracket
D=7/8" Minor Reach Base

REPLACES THE G-48



TL40 BRACKET
TL8 BASE

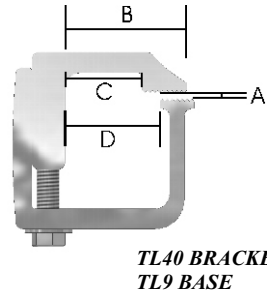


#3TL49-50 ASSEMBLED 50
#3TL49-50/U UNASSEMBLED 50

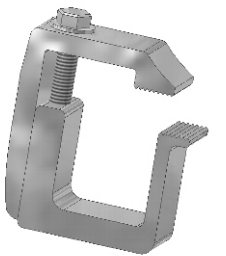
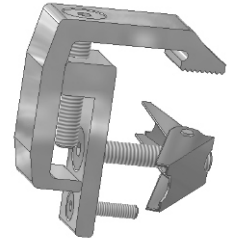
Low Profile Clamp for mounting truck caps or lids with fiberglass or aluminum rails.

A= 0 to 1-1/4" Clamping Range
B= 2" Major Reach
C= 1-3/8" Minor Reach Bracket
D= 1-5/8" Minor Reach Base

REPLACES THE G-49



TL40 BRACKET
TL9 BASE

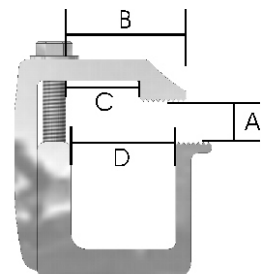


#3TL1/3-50 ASSEMBLED 50
#3TL1/3-50/U UNASSEMBLED 50

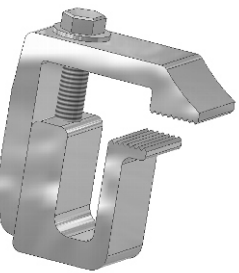
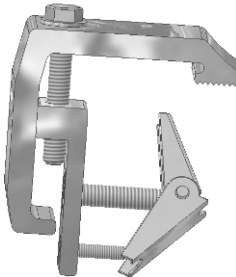
Designed for mounting truck caps or lids with fiberglass or aluminum rails when you need some extra reach under the truck rail.

A= 0 to 2" Clamping Range
B= 1-7/8" Major Reach
C= 1-1/8" Minor Reach Base
D= 1-3/4" Minor Reach Bracket

REPLACES THE G-103



TL1 BASE
TL3 BRACKET

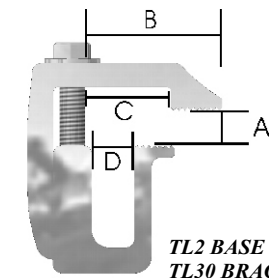


#3TL220-50 ASSEMBLED 50
#3TL220-50/U UNASSEMBLED 50

Designed for mounting truck caps or lids with fiberglass or aluminum rails.

A= 0 to 1-1/4" Clamping Range
B= 1-7/8" Major Reach
C= 1-1/8" Minor Reach Base
D=5/8" Minor Reach Bracket

REPLACES THE G-220



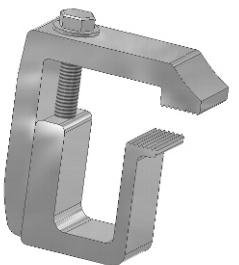
TL2 BASE
TL30 BRACKET



#12091-IS BULK SPECIFY QTY

ALSO AVAILABLE FOR ALL '99 OR NEWER SPORTSIDE CLAMPS

Can be used in place of toggle wing.

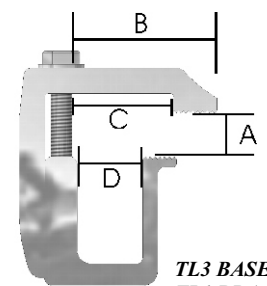


#3TL3/1-50 ASSEMBLED 50
#3TL3/1-50/U UNASSEMBLED 50

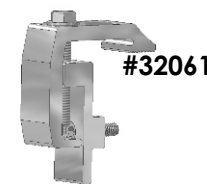
Designed for mounting truck caps or lids with fiberglass or aluminum rails. When you need extra reach over the rail.

A= 0 to 2" Clamping Range
B= 2-1/2" Major Reach
C= 1-3/4" Minor Reach Base
D=1-1/8" Minor Reach Bracket

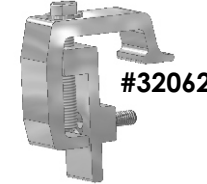
REPLACES THE G-301



TL3 BASE
TL1 BRACKET



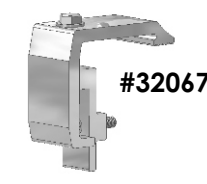
#32061



#32062



#32063



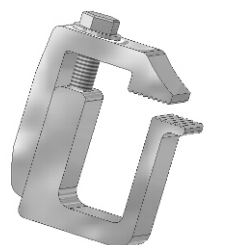
#32067



#32071

CHEVY COMPOSITE CLAMP

#33004/1 CARDED FRONT & BACK CLAMPS

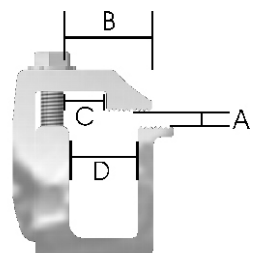


#3TL302-50 ASSEMBLED 50
#3TL302-50/U UNASSEMBLED 50

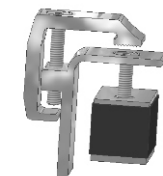
Designed for mounting truck caps or lids with fiberglass or aluminum rails. **TOYOTA**

A= 0 to 1-1/4" Clamping Range
B= 1-3/8" Major Reach
C= 5/8" Minor Reach Base
D=1-1/8" Minor Reach Bracket

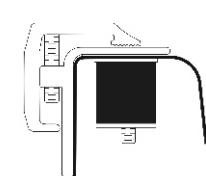
REPLACES THE G-302



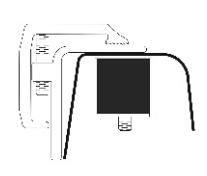
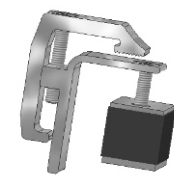
TL30 BASE
TL1 BRACKET



33004B
BACK POCKET



33004F
FRONT POCKET



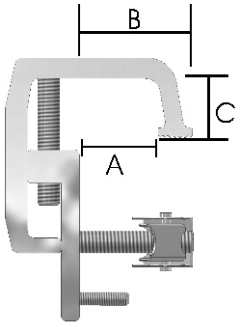
CHEVY CLAMPS

#32093-24/B BAGGED 24

A= 1-5/16"
B= 1-15/16"
C= 1" Depth

Dual Purpose Clamp. Designed for mounting truck caps to Chevy Sportside & Ford Sport Trac truck beds.

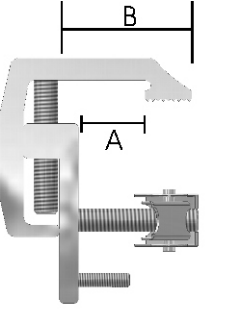
Countersunk bolt for tonneau cover applications.



#32094-24/B BAGGED 24

A= 1-1/16"
B= 1-3/4"

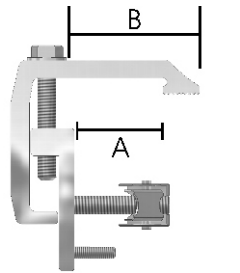
Dual Purpose Clamp. Designed for mounting aluminum or fiberglass railed covers to Chevy Sportside & Ford Sport Trac truck beds. **Countersunk bolt for tonneau cover applications.** Remove existing screw from bedside on the Sport track and plug on the Sportside, install TITE-LOK bracket with screws provided.



#32097-24/B BAGGED 24

A= 1-3/4"
B= 2-1/2"

Dual Purpose Clamp. Designed to provide extra reach for mounting caps or covers to Chevy Sportside & Ford Sport Trac truck beds. Remove existing screw from bedside on the Sport track and plug on the Sportside, install TITE-LOK bracket with screws provided.



TOYOTA CLAMPS

RAIL HUGGING CLAMPS

#3101-20PKS BAGGED 120
(6 TO A PACK BOLT IS 3")
#3102-20PKS BAGGED 120
(6 TO A PACK BOLT IS 3-1/2")

Used for mounting aluminum rail truck caps or covers with no clamping surface. (The rail extends fully into the truck bed.)

#3104-50/B BAGGED 50

Designed for mounting aluminum railed covers to Toyota truck beds. Clamping range allows for "Over the Rail Bed Liners". For a **3" rail**.

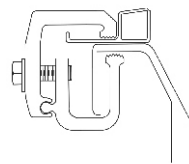
REPLACES THE G-10

#3104M-50/B BAGGED 50

Designed for mounting aluminum railed covers to Toyota truck beds. Clamping range allows for "Over the Rail Bed Liners". For a **2" rail**.

REPLACES THE G-10

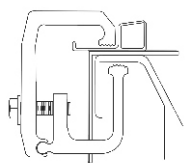
#3194-50 ASSEMBLED 50
#3194-50/B BAGGED 50
#3194-50/U UNASSEMBLED 50
 A= 0 to 5/8" Clamping Range
 B= 1-1/8" Major Reach
 C= 3/4" Minor Reach



Primarily for mounting Toyota truck caps or covers with a limited clamping surface. (The cap rail extends partially into the truck bed.)

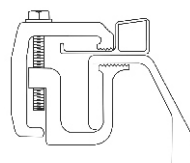
REPLACES THE G-20

#3196-50 ASSEMBLED 50
#3196-50/U UNASSEMBLED 50
 A= 5/16" to 7/8" Clamping Range
 B= 1" Major Reach
 C= 3/4" Minor Reach



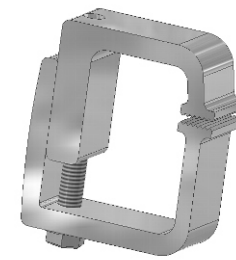
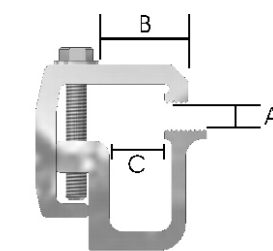
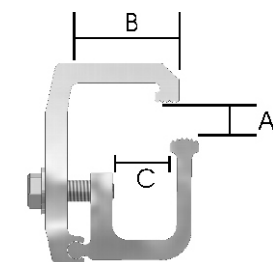
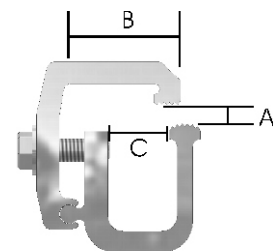
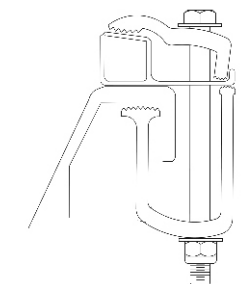
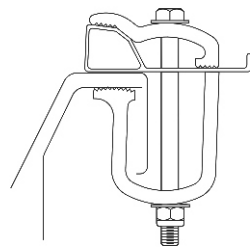
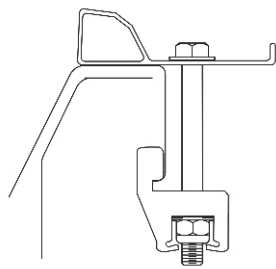
Designed primarily for mounting Toyota truck caps or covers with aluminum or fiberglass rails and/or with "Over the Rail Bed Liners".

#32004-50 ASSEMBLED 50
#32004-50/U UNASSEMBLED 50
 A= 0 to 7/8" Clamping Range
 B= 1-1/2" Major Reach
 C= 1" Minor Reach



Designed primarily for mounting Toyota truck caps or covers with aluminum or fiberglass rails and/or with "Over the Rail Bed Liners".

REPLACES THE G-20

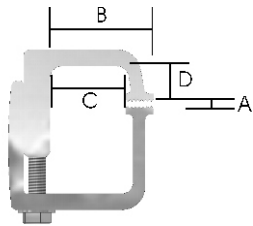


#3TL9-50 ASSEMBLED 50
#3TL9-50/U UNASSEMBLED 50

A= 0 to 2-3/16" Clamping Range
 B= 2-3/16" Major Reach
 C= 1-5/8" Minor Reach
 D= 3/4" Depth of Bracket

Designed for mounting truck caps or lids with fiberglass or aluminum rails. When extra reach is needed.

REPLACES THE G-9

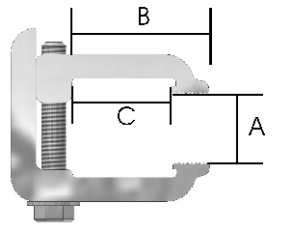


#3TL16-50 ASSEMBLED 50
#3TL16-50/U UNASSEMBLED 50

A= 0 to 1-1/2" Clamping Range
 B= 2-3/16" Major Reach
 C= 1-1/2" Minor Reach

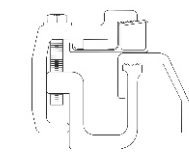
Pinch Clamp designed for mounting truck caps or lids with rails that angle down into the truck bed.

IMPROVED DESIGN
REPLACES THE G-16



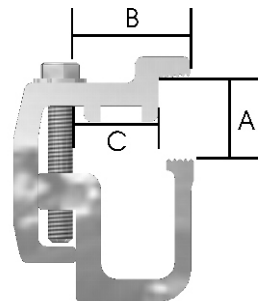
#3TL21-50 ASSEMBLED 50
#3TL21-50/U UNASSEMBLED 50

A= 0 to 1-3/4" Clamping Range
 B= 1-1/2" Major Reach
 C= 1" Minor Reach



TOYOTA specialty clamp
 Look! No need for drilling

REPLACES THE G-21



#3TL22-50 ASSEMBLED 50
#3TL22-50/U UNASSEMBLED 50

Designed for mounting caps and lids with slotted rail design.

REPLACES THE G-22

#3TL25-50/U UNASSEMBLED 50

Designed for mounting caps and lids with slotted rail design.

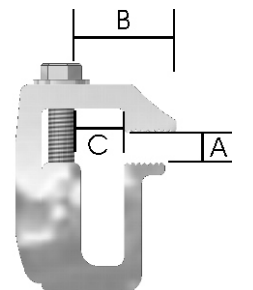
REPLACES THE G-25

#3TL30-50 ASSEMBLED 50
#3TL30-50/U UNASSEMBLED 50

A= 0 to 1-1/4" Clamping Range
 B= 1-3/8" Major Reach
 C= 5/8" Minor Reach

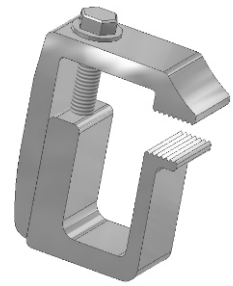
Primarily for mounting caps where there is limited clamping surface. **TOYOTA**

REPLACES THE G-30



RAIL HUGGING CLAMPS

TONNEAU COVERS & LIDS

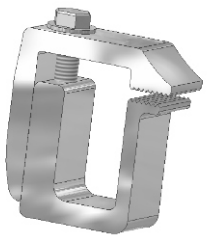
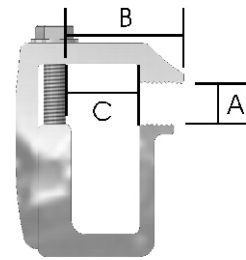


#3TL1-50 ASSEMBLED 50
#3TL1-50/U UNASSEMBLED 50

A= 0 to 1-1/2" Clamping Range
B= 1-7/8" Major Reach
C= 1-1/8" Minor Reach

Designed for mounting truck caps or lids with fiberglass or aluminum rails.

REPLACES THE G-1

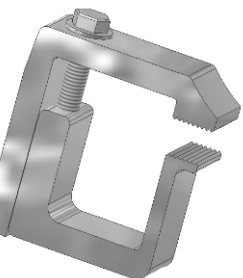
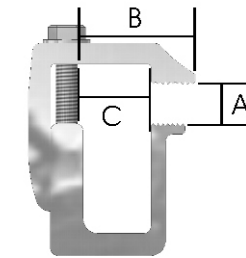


#3TL2-50 ASSEMBLED 50
#3TL2-50/U UNASSEMBLED 50

A= 0 to 1" Clamping Range
B= 1-7/8" Major Reach
C= 1-1/8" Minor Reach

Designed for mounting truck caps or lids with fiberglass or aluminum rails.

REPLACES THE G-2

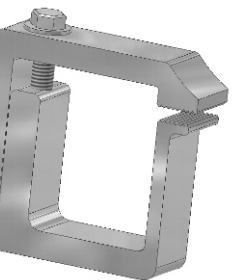
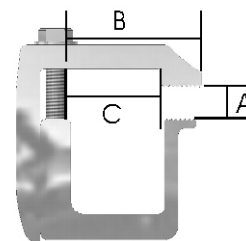


#3TL3-50 ASSEMBLED 50
#3TL3-50/U UNASSEMBLED 50

A= 0 to 1-3/4" Clamping Range
B= 2-1/2" Major Reach
C= 1-3/4" Minor Reach

Designed for mounting truck caps or lids with fiberglass or aluminum rails.

REPLACES THE G-3

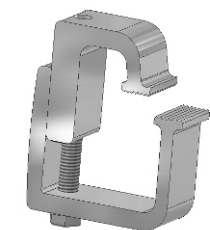
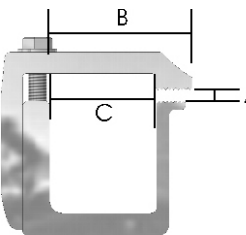


#3TL4-50 ASSEMBLED 50
#3TL4-50/U UNASSEMBLED 50

A= 0 to 1-3/4" Clamping Range
B= 2-15/16" Major Reach
C= 2-3/16" Minor Reach

Designed for mounting truck caps or lids with fiberglass or aluminum rails.

REPLACES THE G-4

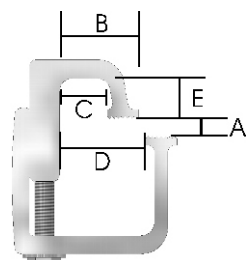


#3TL5-50 ASSEMBLED 50
#3TL5-50/U UNASSEMBLED 50

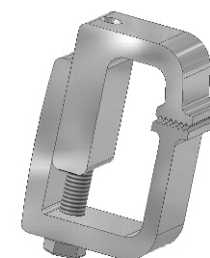
A= 0 to 1-1/4" Clamping Range
B= 1-1/2" Major Reach
C= 7/8" Minor Reach Bracket
D=1-5/8" Minor Reach Base
E=3/4" Depth of Bracket

Designed for mounting truck caps or lids with fiberglass or aluminum rails. **TOYOTA**

REPLACES THE G-5



TL8 BRACKET
TL9 BASE

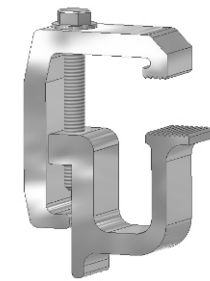
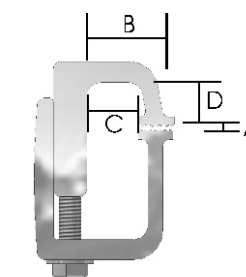


#3TL8-50 ASSEMBLED 50
#3TL8-50/U UNASSEMBLED 50

A= 0 to 1-1/4" Clamping Range
B= 1-1/2" Major Reach
C= 7/8" Minor Reach
D=3/4" Depth of Bracket

Designed for mounting truck caps or lids with fiberglass or aluminum rails. **CENTURY LIDS, LEER 500**

REPLACES THE G-8

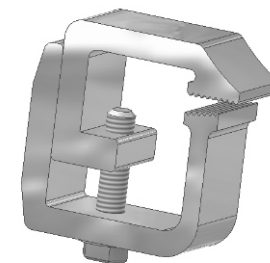
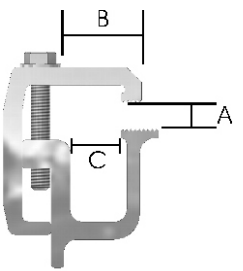


#32005-50 ASSEMBLED 50
#32005-50/U UNASSEMBLED 50

A= 0 to 1-3/8" Clamping Range
B= 1-1/2" Major Reach
C= 1" Minor Reach

Designed primarily for mounting Toyota truck caps or covers with aluminum or fiberglass rails and/or with "Over the Rail Bed Liners".

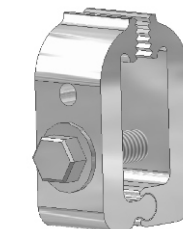
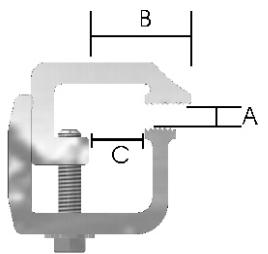
REPLACES THE G-20



#32021-50 ASSEMBLED 50
#32021-50/U UNASSEMBLED 50
#32021/4 4 PCS. CARDED 48

A= 0 to 3/4" Clamping Range
B= 1-5/8" Major Reach
C= 7/8" Minor Reach
1" cut width

Designed for mounting tonneau covers & lids with flat rails.

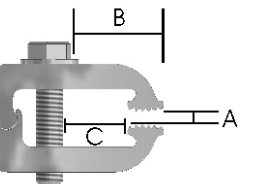


#32022-50/U UNASSEMBLED 50
#32022A-100/U UNASSEMBLED 100
(NO HOLE)

A= 0 to 1/2" Clamping Range
B= 1-1/4" Major Reach
C= 1" Minor Reach
1" cut width

COMES WITH A 5/16-18 THREADED HOLE FOR MOUNTING GAS SHOCKS.

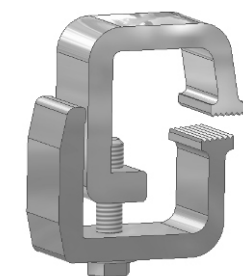
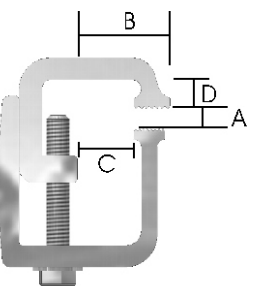
Specialty Clamp. **Do not use for mounting truck caps.**



#32027-50 ASSEMBLED 50
#32027-50/U UNASSEMBLED 50
#32027/4 4 PCS. CARDED 48

A= 0 to 3/4" Clamping Range
B= 1-1/2" Major Reach
C= 1" Minor Reach
D= .675" Depth of Reach

Designed for mounting Century lids, Leer 500 and other lids with similar rails.
Can be used for mounting truck caps.

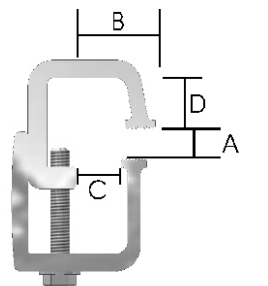


#32028-50 ASSEMBLED 50
#32028-50/U UNASSEMBLED 50

A= 0 to 3/4" Clamping Range
B= 1-1/2" Major Reach
C= 1" Minor Reach
D= 1" Depth of Reach

Designed for mounting glass lids. Primarily A.R.E. Lids and other lids with similar rails.

REPLACES THE G-6



HINGED CLAMPS

SPECIALTY CLAMPS

- #3181-50 **ASSEMBLED** 50 A= 0 to 5/8" Clamping Range
- #3181-50/B **BAGGED** 50 B= 1-1/2" Major Reach
- #3181-50/U **UNASSEMBLED** 50 C= 3/4" Minor Reach
- #3181/4 **4 PCS. CARDED** 48

Dual purpose clamp designed for mounting truck caps or covers with aluminum or fiberglass rails. Comes equipped with a tie-down ring for hauling.

- #3182-50 **ASSEMBLED** 50 A= 5/8" to 1-3/8" Clamping Range
- #3182-50/B **BAGGED** 50 B= 1-1/2" Major Reach
- #3182-50/U **UNASSEMBLED** 50 C= 3/4" Minor Reach
- #3182/4 **4 PCS. CARDED** 48

Dual purpose clamp designed for mounting truck caps or covers with 5/8" fiberglass rails only. Comes equipped with a tie-down ring for hauling.

- #3183-50 **ASSEMBLED** 50 A= 5/16" to 7/8" Clamping Range
- #3183-50/U **UNASSEMBLED** 50 B= 1-1/2" Major Reach
- C= 3/4" Minor Reach

For mounting with "over-the-rail" bed liners only. Comes equipped with a tie-down ring for hauling.

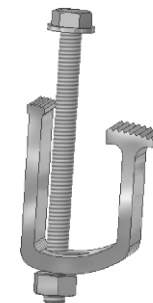
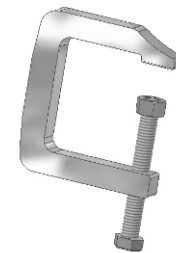
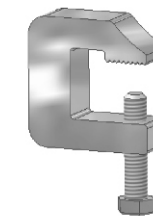
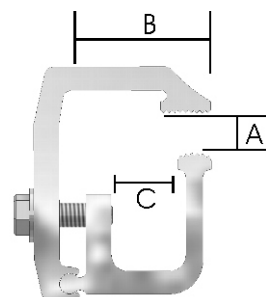
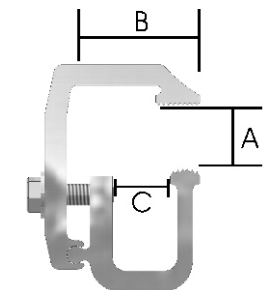
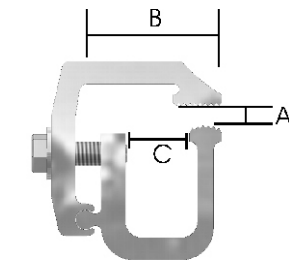
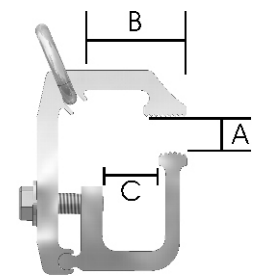
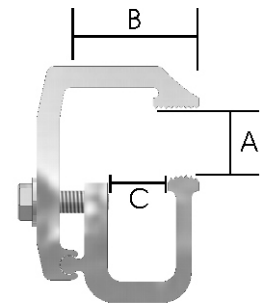
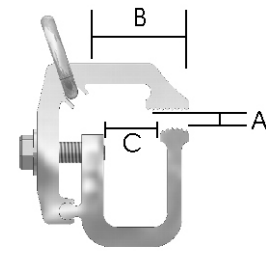
- #3191-50 **ASSEMBLED** 50 A= 0 to 5/8" Clamping Range
- #3191-50/B **BAGGED** 50 B= 1-1/2" Major Reach
- #3191-50/U **UNASSEMBLED** 50 C= 3/4" Minor Reach
- #3191/4 **4 PCS. CARDED** 48

Designed for mounting truck caps or covers with aluminum and fiberglass rails.

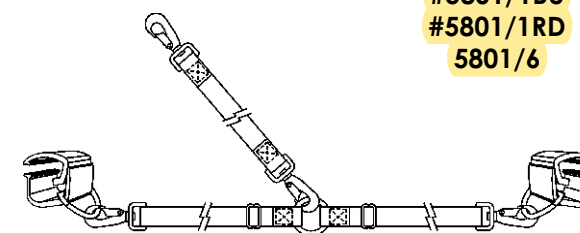
- #3192-50 **ASSEMBLED** 50 A= 5/8" to 1-3/8" Clamping Range
- #3192-50/B **BAGGED** 50 B= 1-1/2" Major Reach
- #3192-50/U **UNASSEMBLED** 50 C= 3/4" Minor Reach
- #3192/4 **4 PCS. CARDED** 48

Designed for mounting truck caps or covers with 5/8" fiberglass rails only.

- #3193-50 **ASSEMBLED** 50 A= 5/16" to 7/8" Clamping Range
- #3193-50/B **BAGGED** 50 B= 1-1/2" Major Reach
- #3193-50/U **UNASSEMBLED** 50 C= 3/4" Minor Reach



REPLACES J-HOOK



- #3181-DR **BULK** **SPECIFY QUANTITY**

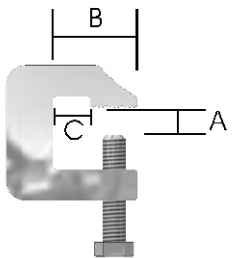
Tie-Downs for hauling.

D-rings may be applied to most two-piece mounting clamps.

- #33001-50 **ASSEMBLED** 50

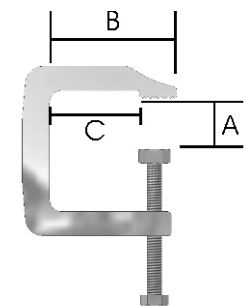
Specialty clamp.

- A= 0 to 7/8" Clamping Range
- B= 2-1/8" Major Reach
- C= 5/8" Minor Reach



- #33002-48 **ASSEMBLED** 48

- A= 0 to 2-1/8" Clamping Range
- B= 2-5/8" Major Reach
- C= 1-7/8" Minor Reach

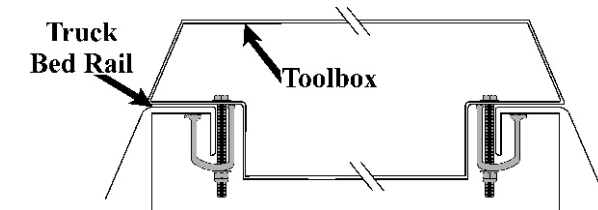


Designed for mounting tonneau covers. Clamp is 1/2" wide and has 5/16" screw.

- #70104 **2 PCS. BAGGED** **UP TO 100 per case**
- #70104/2 **2PCS. CARDED** 12

Must have no less than 5/8" between the truck rail and the tool box

The Tite-Lok® Tool Box Mounting Kit comes with 2 clamps for attaching most tool boxes to a truck bed rail.



- #5801/1BK **BLACK; CARDED** 1
- #5801/1BU **BLUE; CARDED** 1
- #5801/1RD **RED; CARDED** 1
- 5801/6 **CARDED (2 OF EACH COLOR)** 6

TITE-LOK'S DOG RESTRAINT SYSTEM REQUIRES NO DRILLING OF HOLES.

