



PRODUCT CATALOG
Connectivity Solutions



**United States
Corporate Headquarters**

6910 Carroll Road, #200
San Diego, California 92121
Phone: 800-266-3333

Please visit us at:
www.stereonusa.com

WELCOME

For over 60 years, Steren Electronics International has provided innovative solutions to the electronics connectivity world.

As a manufacturer with diversity credentials and decades of experience, we offer products crafted with innovation, advanced design, and award-winning technology.

Steren Electronics is committed to deliver the finest quality products and the highest level of customer service to ensure superior value to our customers and their consumers.

We have built a strong and global brand. Steren has been and continues to be, the trusted brand in the industry for technology excellence.

Thank you for choosing Steren.



THE STEREN GROUP OF COMPANIES

Using a global footprint, Steren is firmly entrenched in the broadband and communications industries serving both, our Business-to-Business and Business-to-Consumer, customers throughout the world. Our manufacturing, engineering, distribution and sales operations in the United States, Mexico and Southeast Asia allow us to create a value stream focused on serving our customers.

At Steren, we strive to build long-lasting relationships by partnering with our customers to identify their needs and provide solutions that fuel their success.



Corporate Headquarters:

San Diego, CA

Engineering, Manufacturing and QA/QC:

China

Mexico

USA

Vietnam

Operational Centers:

San Diego, CA - Corporate, Sales & Warehouse/Distribution

Memphis, TN - Warehouse & Distribution

Tijuana, MX - Production & Assembly

Delivering Solutions to Drive Your Business

- High quality manufacturing and distribution
- Innovative research and development
- Leading edge engineering
- Unsurpassed technical support
- World class quality assurance (TL 9000 / ISO 9001)
- Superior customer service
- Unique fulfillment solutions



Incorporating Diversity
into Every Aspect of
Our Business

STEREN QUALITY

Ensuring quality by maintaining high standards

PRODUCT INSPECTIONS

- Pre-Production
- Production Monitoring
- IPQC Evaluation
- Pre-shipment Inspection
- Container Load Inspection

FACTORY AUDITS

- Manufacturing Facilities & Organization Access According to TL 9000 / ISO 9001
- Social Compliance of Suppliers with SA 8000 Audits

INSTRUMENTS & LABORATORY TESTING

- CPSIA - U.S. Hazardous Materials Testing
- REACH - EU Chemical Compliance
- ROHS - Electrical Components Testing
- Detailed Reports

DESIGN & ENGINEERING

- Product Design Services
- Structural Analysis & Modeling
- Application Engineering Support
- 3D Surface Modeling
- EMC Analysis & Design
- 3D Rapid Prototyping
- Tooling & Fixture Build

International Strength and Experience

Steren Electronics International offers world-class manufacturing services in areas of production and assembly processes including:

- Contract Manufacturing
- Electromechanical Assemblies
- CNC Machining
- Die Casting
- Metal Fabrication
- Injection Molding
- Vacuum Forming
- Tooling
- Packaging
- Kitting

Our Steren China Office has maintained a TL 9000 / ISO 9001 Quality Management System Certification by SGS since 2008. This certification has enabled us to provide unparalleled quality control and a host of value-added services to ensure customer satisfaction.

Steren Catalog Logo Legend

General/Standard Icons, Logos & Symbols:



Products Verified by Intertek ETL Semko



Product Listed by Underwriters Laboratories in the U.S.



Product Listed by Underwriters Laboratories in Canada and the U.S.



Product Listed by Underwriters Laboratories (Component) in Canada and the U.S.

Coaxial Products, Satellite/CATV Drop Installation materials:



Audio/Video Connectivity Telephony & Twisted-Pair Products:



HDMI Product



HDMI High Speed with Ethernet



100% Factory Tested Product

CATEGORY



Product Complies with Category 3 Voice Grade Specifications



Product Complies with Category 5 or 5E Specifications

CATEGORY



Product Complies with Category 6 Specifications



Steren FastHome™ Fast Media Home Network Systems Product



Steren Fast Media Home Network Systems Product

Steren Certifications



ISO 9001 CERTIFICATION / TL 9000 CERTIFICATION



HDMI® ADOPTER CERTIFIED



Copyright Notice

© 2020 Steren Electronics International, LLC. All rights reserved. No portion of this publication may be reproduced in any form or any means, electronic or mechanical, nor may photographs or drawings be reproduced for any purpose without the Steren Electronics Intl., LLC written permission. Other trademarks referenced are the property of their respective owners.

Specifications Subject to Change © Copyright 2020

TABLE OF CONTENTS



TEST EQUIPMENT

HDMI® Display Tester	6
Wireless Display Tester	7
Optical Power Meter	8
PON Power Meter	9



DISTRIBUTED ANTENNA SOLUTION (DAS)

Configuration Diagram	10
Smart Building Connectivity	11



BULK CABLE

Datacom	12
---------------	----



CABLE ASSEMBLY

Telephone / Network Cables	13
Network Cables	14-17



HDMI® PRODUCTS

HDMI® Cables	18
--------------------	----



CONNECTORS & ADAPTERS

Network	19-21
Network / Telephone	20



HARDWARE & ACCESSORIES

Wall Plates	22
Patch Panels	23-24
Enclosures	25



POWER

Power Cords & Strips	26
----------------------------	----



SATELLITE

Coax / Video Cables	27
Connectors / Wall Plate / Installation	28
Installation	29-30
Meters & Testers	31
Tools & Accessories	32



US PATENT # 9,565,427

BL-526-105

HDMI® Display Tester

AVAT is designed to allow the technician to test and certify the system and cabling at the time of installation, even if there is no customer display present.

Designed for the custom install industry, the Steren Electronics new HDMI® Display Tester allows the technician to perform a 19-pin continuity check, graphically displayed on the HDMI® Display Tester, to confirm the cable is 100% operational in an easy-to-read green/red, pass/fail format.

This versatile device also allows for testing audio and video signals up to 1080p to guarantee the signal source and HDMI® cables are functioning properly before the technician leaves the installation site.

AVAT delivers an affordable and quality solution to any installation project by eliminating future unnecessary truck rolls and customer service complaints.

Physical Features

- Hybrid Dual Layer (silicone rubber/plastic) ruggedized housing
- Dirt resistant
- Water and shock resistant
- Scratch and shatter resistant tempered glass display
- Elevated lip to further protect the display
- Carrying pouch with belt loop

- HDMI® 19-Pin Continuity.
- Full-Color Audio and Video Display.
- Auto-scale Resolutions up to 1080p.
- Two HDMI® Input/Output Ports for Cable Continuity Test.
- One additional HDMI® Input Port to connect to the Set Top Box.
- One Micro USB Port for charging with the included AC Power Supply.
- Hybrid Dual Layer (silicone rubber/plastic) ruggedized housing.
- HDMI® 1.4 compliant.



BL-526-106

Wireless Display Tester

The Signal Always Remains in Your Control

The Wireless Display Tester is the first installer friendly, ruggedized, handheld, 2.4GHZ and 5GHZ dual band Wireless Tester in the industry. This device is designed to help search for the best wireless channels available, as well as the level of interference (noise floor) when installing or troubleshooting wireless LAN connections.

This versatile tester aids the installer and troubleshooter in the analyzing and testing of residential and small/medium business (SMB) Wireless Networks.

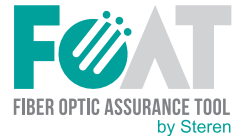
Designed for the Cable and Telco install industries, the new Wireless Tester allows the field tech to decide which channel to use, detect strong/weak wireless signals, and determine interference levels in the area.

The Wireless Assurance Tool will also assist with the location for a "signal booster" and mesh-ons.

Physical Features

- Built-in speaker to indicate good signal without interference
- IP65 rated waterproof and dust tight
- Built-in rechargeable lithium-ion battery
- OTA Firmware for future upgrade or manual upgrade via Micro USB port

- IEEE802.11a/b/g/n/ac dual-band radio with virtual-simultaneous dual-band operation.
- Support for both 2.4x GHz and 5.0x GHz scanning on devices with dual-band Wi-Fi.
- **Site Survey** - displays each AP's beacon signal strength and channel, indicating how Wi-Fi channels in the 2.4x GHz ISM band overlap with one another.
- Lists all wireless APs Wi-Fi environments, along with their SSID, MAC address, frequency, channel, beacon signal strength (-dBm) and security configuration such as WPA or WPA2.
- Provides channel ratings with ACI (Adjacent Channel Interference), CCC (Co-Channel Contention), dBm, and SNR (Signal-to-Noise-Ratio) value for comprehensive rating channels.
- Indicates good strong signal without interference with Bad, Fair, Good status for AP (Access Point) Signal Strength.



BL-526-108

Optical Power Meter

Delivering High Precision and High Performance to your Fiber Network.

The Optical Power Meter is a small, light, easy to carry device and is equipped with a large LCD screen.

The OPM is designed to test LAN and WAN metropolitan networks, CATV net, and long-distance fiber net. The meter can be used to accurately test fiber loss, check fiber continuity, and help evaluate the transmission quality of a fiber chain. The device can be used to test optical power within the wavelength range of 800~1700nm, using measurement units nW, μ W, mW, dB, and dBm.

The meter's display resolution and test accuracy levels are impressive, with six kinds of wavelength calibration points: 850nm, 1300nm, 1310nm, 1490nm, 1550nm, and 1625nm.

The OPM can be used for linearity and non-linearity testing and displays both direct and relative testing of Optical Power.

Physical Features

- Interchangeable adapters (FC, ST, SC, LC)
- Easy to use, handheld large LCD backlight display
- Built-in rechargeable lithium-ion battery

- Multi-wavelength precise measurement.
- Absolute power measurement of dBm or xW.
- Relative power measurement of dB.
- Auto-off function.
- 270, 330, 1k, 2KHz audio frequency tone identification and indication.
- Low voltage indication.
- Automatic wavelength identification (with the help of the light source).
- 1000 groups of data storage.
- USB port upload.
- Real Time Clock (RTC), 650 VFL output Application to interchangeable adapters (FC, ST, SC, LC).



FOAT
FIBER OPTIC ASSURANCE TOOL
by Steren



BL-526-109

PON Power Meter

Delivering High Precision and High Performance to your Fiber Network.

This ruggedized PON Power Meter device is specially designed to test the FTTX PON network construction and maintenance of the fiber optic communications system, which can connect between OLT and ONT.

The voice, data, video signal (1310nm/1490nm/1550nm) online can be measured simultaneously and displays the optical power of all 3 operational PON wavelengths.

The PON Power Meter has a special burst mode measurement function, so it can accurately process burst optical power measurements to upstream PON signal of 1310nm.

It can process pass/fail analysis conveniently through multiple user adjustment thresholds of every wavelength.

The Steren PON Power Meter is a useful device for live acceptance testing during service and fault isolation during maintenance.

Physical Features

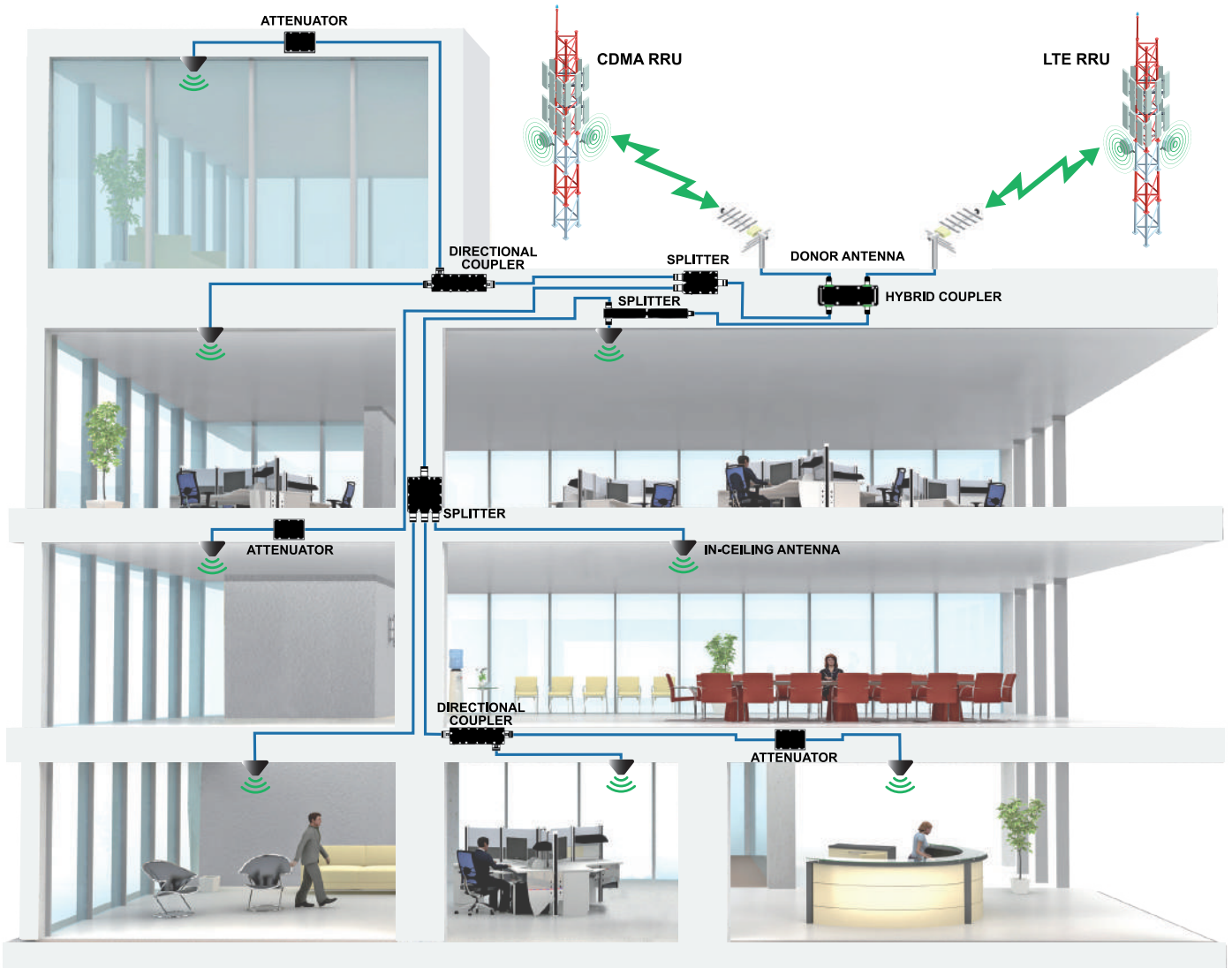
- Auto power-off, auto backlight-off, low-voltage power-off
- Cost efficient, palm sized design for field and lab testing
- Easy-to-use interface with large display for easy visibility
- Built-in rechargeable lithium-ion battery

- Test 3 wavelengths' power of PON system synchronously: 1310nm, 1490nm, 1550nm.
- Suitable for all PON networks (APON, BPON, GPON, EPON).
- User-defined threshold settings.
- Supply 3 groups of threshold values to analyze and display pass/fail status.
- Relative Value (Differential Loss).
- Save and upload the records to computer.
- Set threshold value, upload data, and calibrate wavelength through management software.
- 32 bit CPU, easy to operate, simple and convenient.

DAS

Distributed Antenna Solution

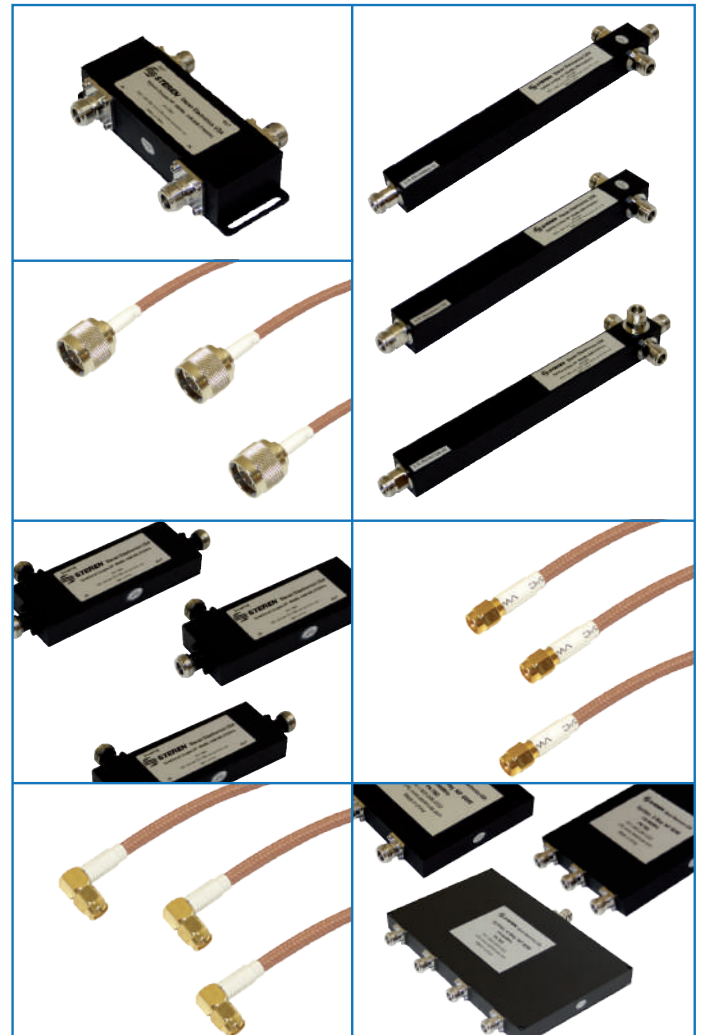
Configuration Diagram



DAS

Distributed Antenna Solution

Smart Building Connectivity



Steren's **DAS** (Distributed Antenna System) Solution for public safety and in-building wireless distribution provides owners and contractors with a code compliant System delivering high performance and minimizing the cost of implementation.

Steren's DAS solution includes:

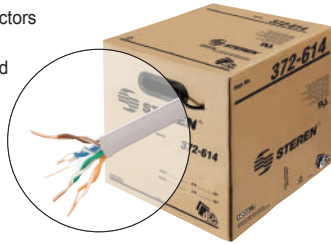
- Internal & External Antenna Technology
- Signal Boosting
- Signal Distribution Components (Hardware)

Have special project needs? Call your Steren Representative,
we want to learn more on how we can address your project needs.



BASELINE - UTP CM Category-6 Bulk Cable

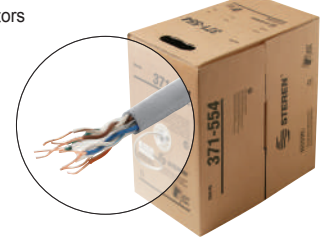
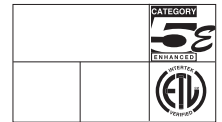
- Category-6 unshielded twisted pair (UTP) cable
- Swept to 550MHz
- Solid annealed bare copper conductors
- Suitable for indoor installations
- Exceeds EIA/TIA 568, UL, CSA and ISO/IEC 11801 specifications
- UL/cUL/ETL Listed / NEC Type CM



372-614 1000' 4pr Cat6 UTP UL CM Cable, GN / WH, Reel in Box

BASELINE - UTP CMP Category-5e Bulk Cable

- Category-5E unshielded twisted pair (UTP) cable
- Swept to 350MHz
- Solid annealed bare copper conductors
- Suitable for indoor installations
- Exceeds EIA/TIA 568, UL, CSA and ISO/IEC 11801 specifications
- ETL Listed / NEC Type CMP (Plenum)



371-554 1000' 4pr Cat5e UTP ETL CMP Cable, RD / BK, Pull Box

BASELINE - UTP CM Category-5e Bulk Cable

- Category-5E unshielded twisted pair (UTP) cable
- Swept to 350MHz
- Solid annealed bare copper conductors
- Suitable for indoor installations
- Exceeds EIA/TIA 568, UL, CSA and ISO/IEC 11801 specifications
- UL/cUL/ETL Listed / NEC Type CM



371-514 1000' 4pr Cat5e UTP UL CM Cable, BG / WH, Pull Box

BASELINE
By Steren

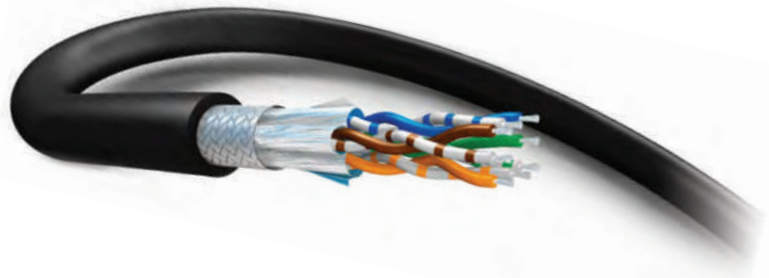
Designed for critical communications
and high-speed networks

Call Your Sales
Representative
Today!

1-800-266-3333

DATA CONNECTIVITY CABLE

Stereon Electronics USA maintains a TL9000 Certification for our bulk Cat5 and Cat6 Network Cabling. These cables are designed to the highest quality and rigorously tested to conform to the stringent Telcordia GR-3164-CORE standards. They are designed to excel in data communications systems, providing superior performance for critical communications in high-speed network environments.



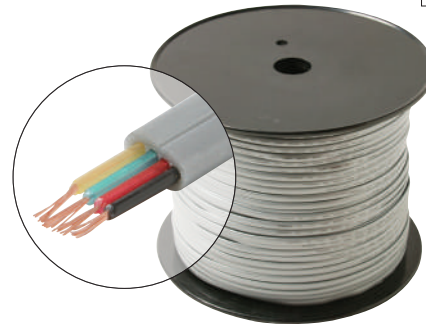
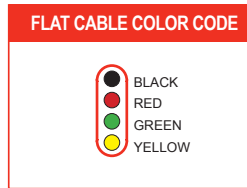
- ▶ Fully swept to 350MHz for Cat5e and 550MHz for Cat6
- ▶ Solid Annealed Copper or Stranded Copper Center Conductors
- ▶ Supports 100Base-TX Fast Ethernet, 1000BASE-T/TX Gigabit Ethernet and 10GBASE-T 10-Gigabit Ethernet systems
- ▶ Conforms to ANSI/TIA/EIA 568C.2 Standards
- ▶ UL/cUL and/or ETL/cETL Listed Product





Bulk Flat Modular Cable

- UL Listed flat modular cable – PVC jacket
- Suitable for Telephone, VoIP telephony applications
- 26 AWG Stranded conductors
- Supplied in spool



301-840 1000' 4C Flat Telephone Cable UL, Silver

Modular Telephone Cord

- Flat modular cable – PVC jacket
- Suitable for telephone, VoIP telephone applications
- 28 AWG stranded conductors
- Cross-wired for telephone-voice applications



304-007 7' 4C Telephone Line Cord, SL
 304-015 15' 4C Telephone Line Cord, SL

Direct Ship Solutions

Steren meets your exact requirements, taking a personalized approach to every shipment



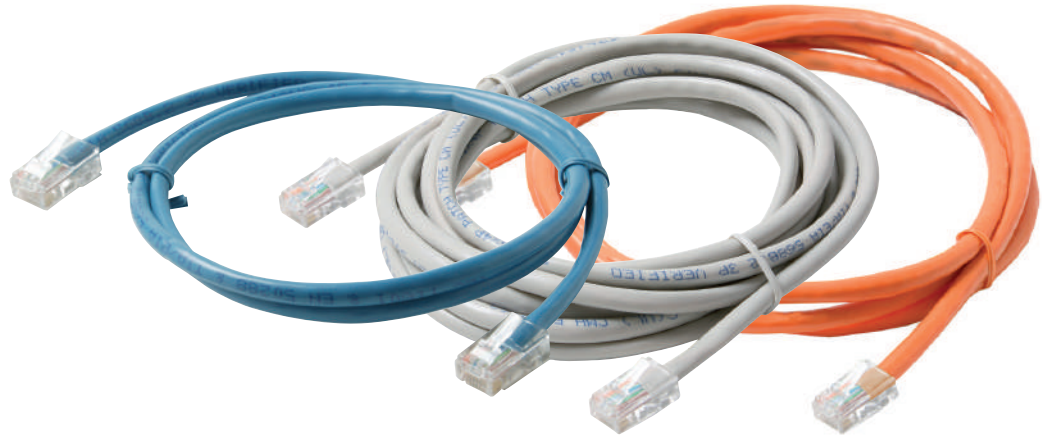
- Reduce procurement cost
- Improve shipping cost and efficiency
- Ensure product quality to specification
- Minimize capital investment and inventory





Non-Booted CAT5E Patch Cord

- Non-booted, flexible data cables connect hub to patch panel or wall outlet to workstation
- Suitable for high-speed data applications, including gigabit ethernet, fast ethernet and 155Mbps TP-PMD/CDDI
- 4-Pair 24 AWG-stranded copper UTP cable
- 100% Tested wiring sequence and continuity
- Flame retardant - type CM
- Exceeds EIA/TIA 568B
- UL/cUL/ETL Listed



- 308-501** 1ft Cat5e UTP Patch Cord, BL
- 308-503** 3 ft Cat5e UTP Patch Cord, BL / GY
- 308-505** 5 ft Cat5e UTP Patch Cord, BL / GY
- 308-507** 7 ft Cat5e UTP Patch Cord, BL / GY / OR
- 308-514** 14 ft Cat5e UTP Patch Cord, BL / GY
- 308-550** 50 ft Cat5e UTP Patch Cord, GY

Non-Booted CAT5E Patch Cord

- Non-booted, flexible data cables connect hub to patch panel or wall outlet to workstation
- Suitable for high-speed data applications, including gigabit ethernet, fast ethernet and 155Mbps TP-PMD/CDDI
- 4-Pair 24 AWG-stranded copper UTP cable
- 100% Tested wiring sequence and continuity
- Flame retardant - type CM
- Exceeds EIA/TIA 568B
- UL/cUL Listed



- PP-308-503** 3 ft. Cat5e Patch Cord Non-Booted UTP cULus, BK / WH
- PP-308-505** 5 ft Cat5e Patch Cord Non-Booted UTP cULus, GY
- PP-308-506** 6 ft Cat5e Patch Cord Non-Booted UTP cULus, BK
- PP-308-507** 7 ft Cat5e Patch Cord Non-Booted UTP cULus, GY
- PP-308-509** 9 ft Cat5e Patch Cord Non-Booted UTP cULus, WH
- PP-308-512** 12 ft Cat5e Patch Cord Non-Booted UTP cULus, BK / WH
- PP-308-514** 14ft Cat5e Patch Cord Non-Booted UTP cULus, GY
- PP-308-515** 15ft Cat5e Patch Cord Non-Booted UTP cULus, GY
- PP-308-525** 25ft Cat5e Patch Cord Non-Booted UTP cULus, GY



Flush-Mold Booted CAT5E Patch Cord

- Flush-mold-injected booted snagless category-5E patch cords
- Suitable for high-speed data applications, including gigabit ethernet, fast ethernet and 155Mbps TP-PMD/CDDI
- 4-Pair 24 AWG-stranded copper UTP cable
- 100% Tested wiring sequence and continuity
- Flame retardant – type CM
- Exceeds EIA/TIA 568B
- UL/cUL/ETL Listed

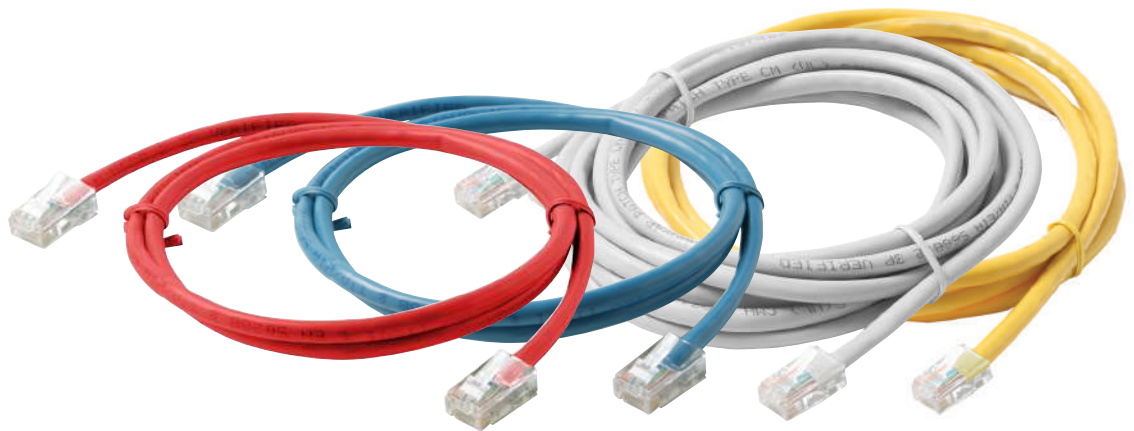


- 308-601** 1 ft Cat5e UTP Molded Patch Cord, BK
- 308-603** 3 ft Cat5e UTP Molded Patch Cord, BK / BL / GY / WH / YL
- 308-605** 5 ft Cat5e UTP Molded Patch Cord, BL / GY / WH
- 308-607** 7 ft Cat5e UTP Molded Patch Cord, BK / BL / GY / WH
- 308-610** 10 ft Cat5e UTP Molded Patch Cord, BK / BL / GY / WH
- 308-614** 14 ft Cat5e UTP Molded Patch Cord, BK / BL / GY

- 308-625** 25 ft Cat5e UTP Molded Patch Cord, BK / BL / GY / OR / WH
- 308-650** 50 ft Cat5e UTP Molded Patch Cord, BL / GY / OR
- 308-600** 100 ft Cat5e UTP Molded Patch Cord, BL / GY

Non-Booted CAT6 Patch Cord

- Non-booted, flexible data cables connect hub to patch panel or wall outlet to workstation
- Suitable for high-speed data applications, including gigabit ethernet, fast ethernet and 155Mbps TP-PMD CDDI
- 4-Pair 24 AWG-stranded copper UTP cable
- 100% Tested wiring sequence and continuity
- Flame retardant - type CM
- Exceeds EIA/TIA 568B
- UL/cUL/ETL Listed



- 308-201** 1 ft Cat6 Patch Cord Non-Booted UTP cULus, BL / WH
- 308-202** 2 ft Cat6 Patch Cord Non-Booted UTP cULus, BL / RD / WH / YL
- 308-203** 3 ft Cat6 Patch Cord Non-Booted UTP cULus, BL / YL / WH
- 308-205** 5 ft Cat6 Patch Cord Non-Booted UTP cULus, BL / RD / WH / YL
- 308-207** 7 ft Cat6 Patch Cord Non-Booted UTP cULus, BL / YL
- 308-210** 10 ft Cat6 Patch Cord Non-Booted UTP cULus, BL / YL

- 308-215** 15 ft Cat6 Patch Cord Non-Booted UTP cULus, BL
- 308-225** 25 ft Cat6 Patch Cord Non-Booted UTP cULus, BL
- 308-230** 30 ft Cat6 Patch Cord Non-Booted UTP cULus, BL



Flush-Mold Booted CAT6 Patch Cord

- Flush-mold injected booted snagless Category-6 patch cords
- Ultra high-performance data communications cable, Critical network applications, including gigabit ethernet, fast ethernet, broadband audio and video, 155Mbps ATM, 100Mbps TP-PMD/CDDI, NEXT, ELFEXT and RL bandwidth compliant
- 4-Pair 24 AWG-stranded copper UTP cable
- 100% Tested wiring sequence and continuity
- Flame retardant - type CM
- Exceeds Category-6 ANSI/TIA/EIA 568B.2-1 Standards
- UL/cUL/ETL Listed



328-950 50 ft Cat6 UTP Molded Patch Cord, BL

Fast Media™ CAT6 Patch Cord

- Fast Media™ CAT6 booted patch cords
- Ultra-high performance data communications cable
- Critical network applications, gigabit ethernet, fast ethernet, broadband audio and video, 155Mbps ATM, 100Mbps TP-PMD/CDDI, NEXT, ELFEXT and RL bandwidth compliant
- 4-Pair 23 AWG-stranded copper UTP cable
- 100% Tested wiring sequence and continuity
- Flame retardant – type CM
- Exceeds category-6 ANSI/TIA/EIA 568B.2-1 standards
- UL/cUL/ETL Listed

FAST MEDIA™



308-902 2 ft Cat6 UTP Molded Patch Cord, BL

308-903 3 ft Cat6 UTP Molded Patch Cord, BL / GY

308-905 5 ft Cat6 UTP Molded Patch Cord, BL

308-907 7 ft Cat6 UTP Molded Patch Cord, BL / GY

308-910 10 ft Cat6 UTP Molded Patch Cord, BL

308-914 14 ft Cat6 UTP Molded Patch Cord, BL / GY

308-925 25 ft Cat6 UTP Molded Patch Cord, BL

308-975 75 ft Cat6 UTP Molded Patch Cord, BL / GY

Custom Coaxial Cables

Choose from a wide variety of [specifications](#):



Jumper Lengths:

- 1/4' (3") up to 50' (600')
- Custom Lengths

Colors:

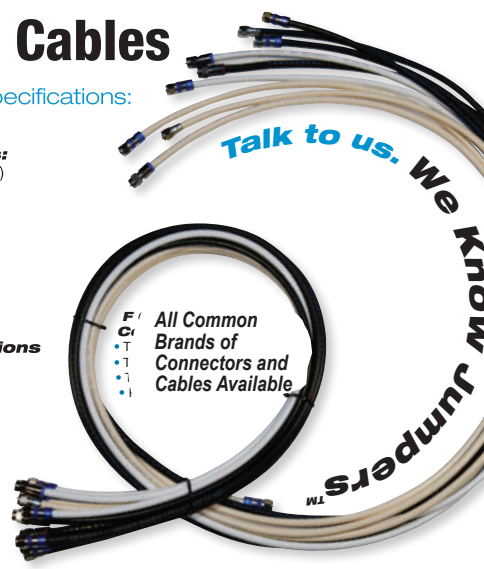
- Black
- White
- Ivory



RG6 Configurations

- Regular
- Tri-Shield
- Quad-Shield
- Coiled or Spooled

Coiling Options



Talk to us. We Know Jumpers™

All Common Brands of Connectors and Cables Available



RG6 Cable SNS Connector

- Commercial grade RG6 Cable suitable for DDS and Cable TV installations
- Enhanced continuity compression RG6 connectors for quality throughput signal and enhanced shielding



JRG6SNS-072

72in RG6 Cable SNS Connector

RG6 Cable SNS Connector

- Commercial grade RG6 Cable suitable for DDS and Cable TV installations
- Enhanced continuity compression RG6 connectors for quality throughput signal and enhanced shielding



JRG6SSNS-072

72in RG6 Steren Cable SNS Connector Cable

RG6 Trishield Cable Corning Connector

- Commercial grade RG6 Trishield Cable suitable for DDS and Cable TV installations
- Enhanced continuity compression RG6 connectors for quality throughput signal and enhanced shielding



JRG6TSGUSC-036

36 in RG6 Tri-shield Corning Continuity Cable

RG6 Trishield Cable Corning Connector with Torque Sleeve

- Commercial grade RG6 Trishield Cable suitable for DDS and Cable TV installations
- Enhanced continuity compression RG6 connectors for quality throughput signal and enhanced shielding
- High quality F connector torque sleeve for easy connections
- Torque Adapter Patent #9837777

Connector is easily installed in small spaces



Provides "torque" to connector to create full contact with device



JRG6TSGUSC-072-TDC-1

72 in RG6 Tri-shield Continuity Connector, with Black torque sleeves

CUSTOM JUMPER SOLUTIONS

Providing custom products to meet your specifications

- Reduce on-site labor costs
- Customize products to your specifications
- Flexibility to meet your production schedules
- Packing solutions to meet your needs





HDMI® High-Speed with Ethernet



- Supports resolutions beyond standard 1080p, up to 4Kx2K
- Supports high video bandwidth up to 18Gbps
- Ethernet Data Channel to share high-speed network connection
- HDMI® High-Speed with Ethernet Certified
- Full 3D resolution capable
- Supports Audio Return Channel (ARC) and all digital audio formats with up to 32 audio channels



- 517-303** 3' High-speed HDMI® with Ethernet Cable, BK
- 517-306** 6' High-speed HDMI® with Ethernet Cable, BK
- 517-310** 10' High-speed HDMI® with Ethernet Cable, BK
- 517-312** 12' High-speed HDMI® with Ethernet Cable, BK
- 517-330** 30' High-speed HDMI® with Ethernet Cable, BK
- 517-350** 50' High-speed HDMI® with Ethernet Cable, BK

HDMI® High-Speed with Ethernet Cable



- Supports extremely high resolutions four times the clarity of 1080p/60 up to 4K@50/60, equal to 2160p
- Supports video bandwidth for the new, more efficient signaling method, with speeds up to 18Gbps
- Provides support for simultaneous delivery of dual video streams to multiple users on the same screen
- Allows for simultaneous delivery of multi-stream audio to multiple users (up to 4)
- Ethernet Data Channel allows devices to share a high-speed network connection and internet connectivity without a separate Ethernet cable
- Designed to support TVs with high refresh rates (up to 800MHz)
- Fully able to transfer all 3D content
- Audio Return Channel eliminates excess cables; connects TV and audio receiver to a single HDMI® cable
- Supports all digital audio formats including Dolby® TrueHD and DTS-HD Master Audio™ as well as up to 32 audio channels and 1536kHz sampling frequency for an immersive audio experience
- Additional support for the wide angle theatrical 21:9 video aspect ratio



- 517-386** 6' High-speed HDMI® with Ethernet Cable, BK
- 517-388** 12' High-speed HDMI® with Ethernet Cable, BK

HDMI® Coupler

- High-definition multimedia interface adapter
- Couple two HDMI® cables for longer runs



528-006 HDMI® Jack to Jack Adapter

HDMI® Surge Protector

- Provide protection for HDMI® equipment
- Support HDMI® 1.4
- Compliant IEC61000-4-2, IEC61000-4-4, IEC61000-4-5
- Built-in ESD, EFT (impulse noise), lightning protection
- Reaction Speed: <1 ns
- Passive unit so power is not needed
- Quick and easy in-line application



BL-526-061 HDMI® Surge Protector



Keystone Modular Insert

- Connector-module inserts used with Keystone wall plates
- Snap-in tabs make modules easy to insert and remove for adjustments and wiring changes



310-485WH Keystone HDMi® Jack Adapter, White

Keystone Modular Jack

- Category-3 voice grade UL Listed RJ12 keystone jacks
- Quick snap-down-cover termination
- 22-26 AWG IDC contacts
- UL94V-0 Thermoplastic ABS housing



310-106WH Keystone 6C RJ12 Jack, White

Keystone Modular Jack

- Category-3 voice grade UL Listed RJ12 keystone jacks
- 22-26 AWG 110-IDC Contacts
- Punchdown Termination
- UL94V-0 Thermoplastic ABS housing



310-107WH Keystone 6C RJ12 110-IDC Jack, White

Keystone Modular Jack

- Category-3 voice grade UL Listed RJ45 keystone jacks
- Quick snap-down-cover termination
- 22-26 AWG IDC contacts
- UL94V-0 Thermoplastic ABS housing



310-108WH Keystone 8C RJ45 Jack, White

Category-5E Keystone Jack

- Category-5E UL Verified and Listed keystone jack
- 22-26 AWG 110-IDC Contacts
- UL94V-0 Thermoplastic ABS housing 180°



310-110WH Keystone Cat5e RJ45 Jack, White

Category-5E Keystone Jack

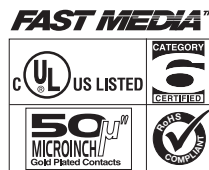
- Category-5E UL Verified and Listed keystone jack
- 22-26 AWG 110-IDC Contacts
- UL94V-0 Thermoplastic ABS housing 90°



310-120WH Keystone Cat5e RJ45 90° Jack, White

Fast Media™ Category-6 Jack

- Fast Media™ Category-6 UL Verified and Listed keystone jack
- 22-24 AWG 110-IDC Contacts
- UL94V-0 Thermoplastic ABS housing 90°



310-140WH Keystone Cat6 RJ45 90° Jack, White

Keystone Modular Insert

- Connector-module insert used with keystone wall plates
- Snap-in tabs make modules easy to insert and remove for adjustments and wiring changes



310-420WH Keystone Blank Insert, White



Keystone Modular Insert

- Connector-module insert used with keystone wall plates
- Snap-in tabs make modules easy to insert and remove for adjustments and wiring changes



310-410WH Keystone BNC Jack Adapter, White

Keystone Modular Insert

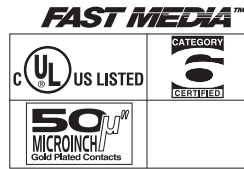
- Connector-module insert used with keystone wall plates
- Snap-in tabs make modules easy to insert and remove for adjustments and wiring changes



310-415WH Keystone F Jack Adapter, White

Category-6 Coupler

- Category-6 jack-jack coupler
- Joins two CAT6 RJ45 cords
- Reverse configuration
- Compliant with ANSI / TIA / EIA



310-043 Keystone CAT6 RJ45 Coupler, WH

Flat-Cable Modular Plug

- Terminates 24-26 AWG flat stranded cable
- High-impact clear polycarbonate plugs



300-064 4C 6x4 RJ11 Modular Plug

300-068 8C 8x8 RJ45 Modular Plug

Round-Cable Modular Plug

- Terminates 24-26 AWG round solid cable
- High-impact clear polycarbonate plugs



300-164 Modular 6x4 Round/Solid RJ11 Plug

Round-Cable Modular Plug

- Terminates 24-26 AWG round stranded solid cable
- High-impact clear polycarbonate plug



300-168 Modular 8x8 Round/Solid RJ45 Plug

Flat-Cable Modular Plug

- Terminates 24-26 AWG flat stranded cable
- High-impact clear polycarbonate plugs
- UL Version



301-064 Modular 6x4 Flat/Stranded RJ11 Plug U

301-068 Modular 8x8 Flat/Stranded RJ45 Plug UL

CAT5E RJ45 Modular Plug

- Suitable for category-5E cable installation
- Terminates 24-28 AWG stranded cable
- High-impact clear polycarbonate plug
- Flame auto-extinguish level UL94V-0

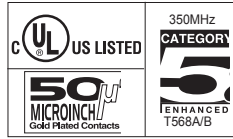


301-172 Modular 8x8 Round/Stranded RJ45 Cat5e Plug UL



CAT5E RJ45 Modular Plug

- Suitable for category-5E cable installation
- Terminates 24-28 AWG solid cable
- High-impact clear polycarbonate plug
- Flame auto-extinguish level UL94V-0

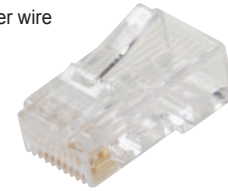
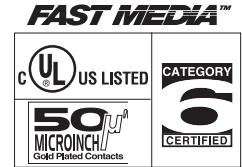


301-176
301-178

Modular 8x8 Round/Solid 2-Prong RJ45 Cat5e Plug UL
Modular 8x8 Round/Solid 3-Prong RJ45 Cat5e Plug UL

Fast Media™ CAT6 Modular Plug

- Fast Media™ CAT6 modular plug
- Suitable for all RJ45 connections
- Designed to fit solid CAT6 cable
- Precision manufactured polycarbonate
- Accepts 22-24 AWG solid copper wire



301-191

Modular 8x8 Round/Solid RJ45 Cat6 Plug UL

FIBER OPTIC SOLUTIONS



Attaining High Standards

Our fiber optic assemblies are rated at the highest technical specifications, meeting or exceeding Telcordia and TIA/EIA standards. Each product is quality tested to ensure that it meets these industry standards. As proof of this testing, each cable shipped to the customer is supplied with a label identifying certified specifications.

By complying with industry standards, we make certain that each fiber optic product has been manufactured to the highest quality possible and performs as expected for its recommended use. And once we ship you a product, our quality assurance process continues: Our engineering staff also provides after-sales technical support for all of our products to ensure that you are completely satisfied.

Our assemblies are customized to your specifications based on fiber mode, simplex/duplex construction, connector and polish type, jacket color, and cable diameter and length. Our cable assemblies are precision manufactured and 100% factory tested and certified.

Our Fiber Optic Line Includes:

- Fiber Jumper Assemblies
- Breakout Receiver Service Pigtail Cable
- Fiber Pigtail Assemblies
- Pre-Terminated Indoor Cable Jumper Assemblies
- Pre-Terminated Indoor Cable Pigtail Assemblies
- Connectors
- Adapters
- Terminators
- Attenuators
- Splitters
- Tools



Call us for more information:
800-266-3333

www.sterenusa.com



Keystone Wall Plate

- Flush mount keystone wall plate
- 1 Cavity
- Holds industry standard modular keystone inserts
- Smooth finish high-impact ABS construction
- Matching-color mounting screws
- UL Listed
- Dimensions: 2 3/4"(W) x 4 1/2"(H)



310-201WH Standard Keystone 1-Port Wall Plate, White

Keystone Wall Plate

- Flush mount keystone wall plate
- 2 Cavity
- Holds industry standard modular keystone inserts
- Smooth finish high-impact ABS construction
- Matching-color mounting screws
- UL Listed
- Dimensions: 2 3/4"(W) x 4 1/2"(H)



310-202WH Standard Keystone 2-Port Wall Plate, White

Keystone Wall Plate

- Flush mount keystone wall plate
- 3 Cavity
- Holds industry standard modular keystone inserts
- Smooth finish high-impact ABS construction
- Matching-color mounting screws
- UL Listed
- Dimensions: 2 3/4"(W) x 4 1/2"(H)



310-203WH Standard Keystone 3-Port Wall Plate, White

Keystone Wall Plate

- Flush mount keystone wall plate
- 4 Cavity
- Holds industry standard modular keystone inserts
- Smooth finish high-impact ABS construction
- Matching-color mounting screws
- UL Listed
- Dimensions: 2 3/4"(W) x 4 1/2"(H)



310-204WH Standard Keystone 4-Port Wall Plate, White

Keystone Wall Plate

- Flush mount keystone wall plate
- 6 Cavity
- Holds industry standard modular keystone inserts
- Smooth finish high-impact ABS construction
- Matching-color mounting screws
- UL Listed
- Dimensions: 2 3/4"(W) x 4 1/2"(H)



310-206WH Standard Keystone 6-Port Wall Plate, White



Contact your Stereon Representative for more information

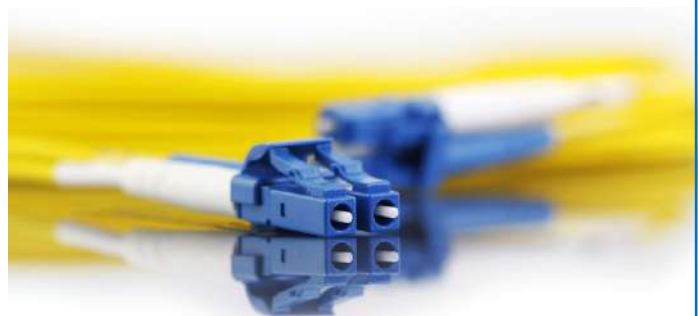
Phone: (800) 266-3333

www.stereonusa.com

CUSTOM FIBER OPTIC SOLUTIONS

Stereon offers a full line of custom assemblies and fiber products built to your specifications.

Our fiber optic solutions serve broadband cable and satellite TV operators, catalog and telephony system contractors, and many other markets.





CAT5E 110-IDC Patch Panel

- Category-5E UL verified and listed patch panel
- High-reliability printed-circuit board design
- 110-termination 22-26 AWG tin-lead contact
- UL94V-0 black ABS modular jack banks
- Dual color-coded 568A/B wiring diagrams
- Numeric stenciled port ID labels



310-324 24-Port Cat5e Loaded Patch Panel

CAT6 110-IDC Patch Panel

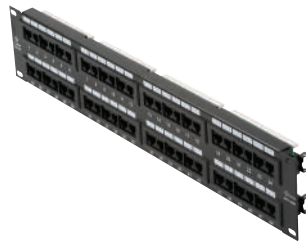
- Category-6 UL verified and listed
- High-reliability printed circuit board design
- 110-Termination 22-26 AWG tin-lead contact
- UL94V-0 black ABS modular jack banks
- Dual color-coded 568A/B wiring diagrams
- Numeric stenciled port ID labels



310-334 24-Port Cat6 Loaded Patch Panel

CAT5E 110-IDC Patch Panel

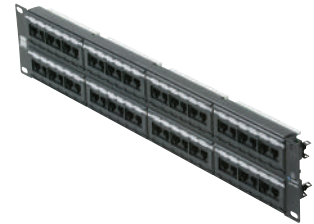
- Category-5E UL verified and listed patch panel
- High-reliability printed-circuit board design
- 110-termination 22-26 AWG tin-lead contact
- UL94V-0 black ABS modular jack banks
- Dual color-coded 568A/B wiring diagrams
- Numeric stenciled port ID labels



310-348 48-Port Cat5e Loaded Patch Panel

CAT6 110-IDC Patch Panel

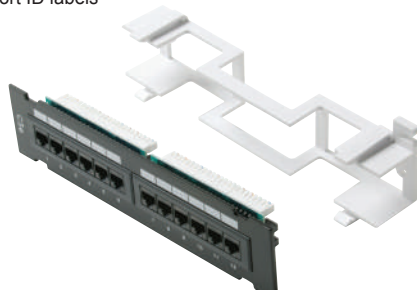
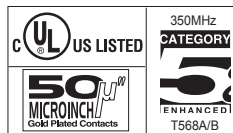
- Category-6 UL verified and listed
- High-reliability printed circuit board design
- 110-Termination 22-26 AWG tin-lead contact
- UL94V-0 black ABS modular jack banks
- Dual color-coded 568A/B wiring diagrams
- Numeric stenciled port ID labels



310-349 48-Port Cat6 Loaded Patch Panel

CAT5E 110-IDC Patch Panel

- Category-5E UL verified and listed patch panel
- High-reliability printed-circuit board design
- 110-termination 22-26 AWG tin-lead contact
- UL94V-0 black ABS modular jack banks
- Dual color-coded 568A/B wiring diagrams
- Numeric stenciled port ID labels



310-320 12-Port Cat5e Loaded Mini Patch Panel

50-Pair Wiring Block

- 50-Pair modular 66-IDC wiring block
- Flame retardant thermoplastic construction
- Quick-connect 66-IDC terminals
- Terminates solid copper wire
 - Category-3 24 AWG to
 - Category-6 23 AWG



310-366 66-Type 50-Pair Wiring Block

Mounting Bracket

- Mounting Bracket for 50-Pair Modular 66-IDC Wiring Block
- Flame Retardant Thermoplastic Construction



310-367 66-Type Mounting Bracket

Bridging Clip

- Bridging Clip for 66-IDC Wiring Block
- Nickel-Plated Brass Construction
- Dimensions: 1/2" (W) x 1/3" (H)
- Bags of 100



310-372 66-Type Bridging Clips for 310-366

Cable Distribution "D" Ring

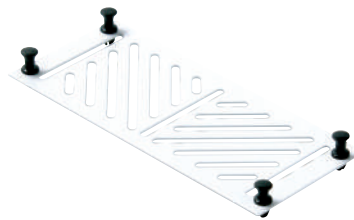
- Suitable for use in cable terminals, ceilings, floors, walls, backboards and other surfaces
- Die-cast aluminum construction
- Smooth, rounded edges prevent damage to insulation and jackets



310-390 1-7/8" Cable Distribution Ring
 310-392 3-1/8" Cable Distribution Ring
 310-394 5-1/8" Cable Distribution Ring

FastHome™ Network Module

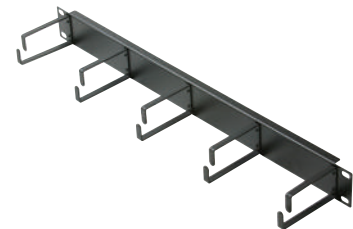
- Mount splitters, multiswitches, couplers and other devices
- Dimensions: 6 1/2" (W) x 2 3/4" (H)



550-001 FastHome™ Universal Mount Plate

Cable Management Panel

- 5-Ring low-profile cable manager
- Organizes front-rack patch cords for use on standard racks, wall brackets or cabinet installations
- Five 1 1/2" x 4" horizontal plastic rings
- Some assembly required
- 1 x EIA Unit 19"(W) x 1 3/4"(H)



310-399 Wire Management Panel - 1EIA

FastHome™ Network Module

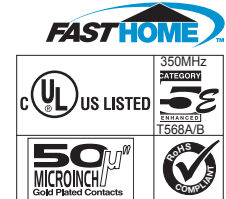
- Distributes 4 incoming phone, fax or modem lines to 6 rooms
- RJ31X port for security system priority
- Expandable phone hub for larger installations
- Dimensions: 6 1/2" (W) x 2 7/8" (H) x 1" (D)



550-020 FastHome™ Telephone Hub Module

FastHome™ Network Module

- Centrally terminates data wires from 8 locations for distribution to switches, hubs or routers
- Dimensions: 6 1/2" (W) x 2 7/8" (H) x 1" (D)



550-030 FastHome™ Data Hub Module

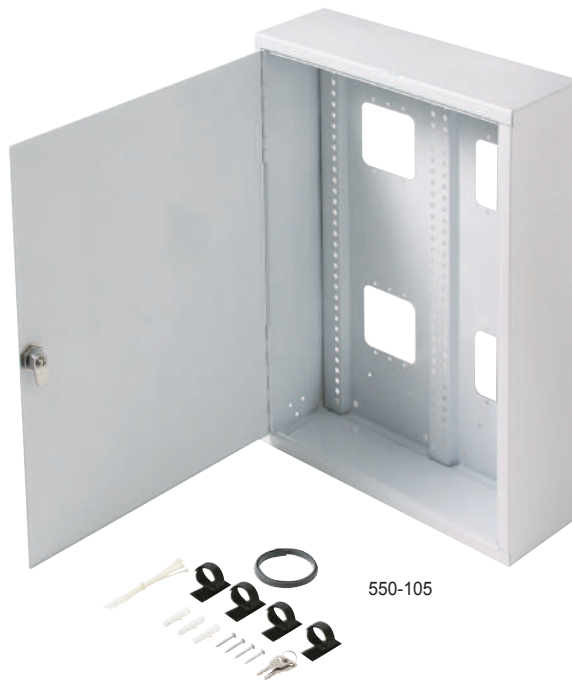


FastHome™ Network Enclosure

- Standard hole spacing allows flexibility for mounting FastHome™ or similar modules
- White textured powder-coated corrosion-resistant finish
- Mounts on surface of a wall
- Multiple knockouts and pre-punched holes
- Raised mounting rails create a clean wiring channel behind mounted module
- Captured hinge cover design for easy access
- Keyed latch for positive closure and security



550-100



550-105

550-100

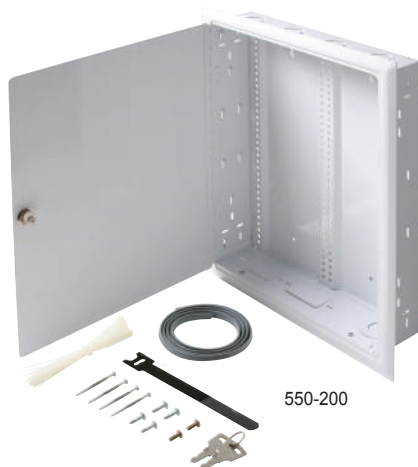
FastHome™ Surface Mount Enclosure - 11"

550-105

FastHome™ Surface Mount Enclosure - 19"

FastHome™ Network Enclosure

- Standard hole spacing allows flexibility for mounting FastHome™ or similar modules
- White textured powder-coated corrosion-resistant finish
- Mounts between 16" center wall studs
- Multiple knockouts and pre-punched holes
- Raised mounting rails create a clean wiring channel behind mounted module
- Captured hinge cover design for easy access
- Keyed latch for positive closure and security



550-200



550-205

550-200

FastHome™ In-Wall Mount Enclosure - 19"

550-205

FastHome™ In-Wall Mount Enclosure - 32"



6-Outlet, 90 Degree Plastic Surge Protector Strip, 150 Joules, White

- Main Power On/Off Switch; LED indicator with Circuit Breaker
- Electrical Rating: 125VAC, 15 Amps (1875 Watts) 60Hz
- 3.5ft Heavy-Duty Cord
- Max Surge Voltage: 6000 Volts Temperature Rating: -40°C to 80°C
- Certification: cULus



905-105 6-Outlet, 90 Degree Plastic Surge Protector Strip, 150 Joules, White

6-Outlet Power Strip with 3ft Cord, Right Angle, 90 Degree

- Electrical Rating: 125VAC, 15 Amps (1875 Watts) 60Hz
- Main Power On/Off Switch with LED indicator
- 3ft Heavy-Duty Cord
- Temperature Rating: -40°C to 80°C
- Certification: cETLus



905-111 6-Outlet Power Strip with 3ft Cord, Right Angle, 90 Degree, Black

6-Outlet, Plastic Surge Protector Strip, 3ft Cord, Right Angle Plug, 240 Joules

- Surge Protection Outlet Strip
- Power Switch with Circuit Breaker
- 125 Volts / 15 Amps
- 3ft Heavy-Duty Cord
- Max Surge Voltage: 6000 Volts
- <1 Nanoseconds Response Time
- -40°C to 80°
- Packaging: White Sleeve
- cETLus Listed



905-112 6-Outlet, Plastic Surge Protector Strip, 3ft Cord, Right Angle Plug, 240 Joules, Black



RG6 Coax Cable, CCS CMX UL, Bulk Cable

- RG6 75 Ohm 60% Braid Video Coaxial Cable
- 3 GHz Rated
- Impedance: 75.0 Ohm +/- 3.0 Ohms
- Velocity of Propagation: 82.0%
- DISH Approved (S6SCCS3GBLK)



DES1001-BK 1000' DES RG6 Cable, CCS, Single, Black, Reel in Box

RG6 Coax Cable, UL CCS, w/Ground, Bulk Cable

- RG6 75 Ohm 60% Braid Video Coaxial Cable
- 3 GHz Rated
- Impedance: 75.0 Ohm +/- 3.0 Ohms
- Velocity of Propagation: 82.0%
- DISH Approved (S6SMCCS3GBLK)



DES1002-BK 1000' DES RG6 Cable, CCS, Single with Ground, Black, Reel in Box

RG6 Coax Cable, UL, CCS, Bulk Cable

- RG6 75 Ohm 60% Braid Video Coaxial Cable
- 3 GHz Rated
- Impedance: 75.0 Ohm +/- 3.0 Ohms
- Velocity of Propagation: 82.0%
- DISH Approved (S6SCCS3GWHT)



DES1005-WH 1000' DES RG6 Cable, CCS, Single, White, Reel in Box

12" Flat Cable

- True Coaxial Cable: 18 dB return loss @ 2150 MHz – 3GHz
- Electrical specs do not degrade with bending, impact, or temp
- Higher connector-cable holding force: > 60 lbs
- Thinner Cable: Less than 3mm
- High Center Conductor Holding F connectors: > 150g
- Impact Durability: 50,000 impacts (with no electrical degradation)
- Shape Retention: employs a metal structure to hold sharper bends
- Included: double-sided mounting tape, clearance measurement tool, installation instructions



144823 12" Holland LF Flat Cable Jumper (DISH Approved)

6ft. RCA Video Patch Cord

- Low-loss fully shielded RCA dubbing cable
- Applications include home theater, DSS receivers, s-video VCRs, camcorders and DVD players
- 1 RG59-video 2x shielded audio conductor
- Fully molded color-coded gold RCA connectors



PP-206-275 6' 3-RCA Composite Audio/Video Cable

Component Video Mini Cable

- Component video RCA mini interconnects
- Provide high-definition video signal transfer between DVD players and high-end TVs or monitors
- Miniature size for use in limited space environments
- Ultra-flex satin rubber PVC jacket
- High-retention RCA connectors
- Color-coded – fully molded construction



257-606BK 6' 5-RCA Component Audio/Video Cable, BK



F81 Barrel, High Frequency

- 3GHz Brass Splice Connector
- 35dB Return Loss
- 27mm long - both flat ends
- DISH Approved
- Sold in bags of 100



AF-81CB Aska Premium Splice F-Female 3 GHz, Brass, DISH Approved

Universal F Compression Connector

- High Performance RG6 Compression Connector
- Designed to be water-tight for outdoor applications
- Universal for 60% through Quad with PVC and PE jackets
- 0-3GHz Bandwidth with 75Ω Nominal Impedance
- Meets or exceeds all SCTE specifications



PPC-EX6XL F Compression Connector

TV Wall Plate

- Modular TV standard wall plate
- High-performance F81 splice (200-058)
Used in 2.5GHz version plates
- High-impact ABS plastic
Flush-mount smooth finish
- Supplied with matching-color mounting screws
- Dimensions: 2 3/4"(W) x 4 1/2"(H)



200-267WH Standard 2.5GHz TV Wall Plate, White

F Connector RG6 / RG59 Torque Adapter

- Easy to install to the RG6, RG59 F connector
- No special compression tool required, just prepare the cable and attach to connector
- Simple and fast installation, saves time, and cost
- Special design for RG6, RG59 cables, recommended for indoor use
- Standard 3/8" x 3/8" hex nut
- Provides firm seating of the connector to the device to prevent signal loss or noise
- Patent # D815,046



200-090BK RG6 / RG59 Hex Style Torque Adapter, Black

2 Way Splitter 5-1000Mhz, DISH Approved

- Flat-End F-Ports
- Enhanced Sub-Band Performance
- Low Intermodulation Distortion
- Capacitor Decoupled
- 6kV Survivability
- Double-Thick Plating
- 130 dB RFI Shielding
- 2-Way Ground Screw: Hex/Phillips/Slot



GHS-2 Holland 2 Way Splitter, 5-1000Mhz, DISH Approved

3 Way Splitter 5-1000Mhz, DISH Approved

- Flat-End F-Ports
- Enhanced Sub-Band Performance
- Low Intermodulation Distortion
- Capacitor Decoupled
- 6kV Survivability
- Double-Thick Plating
- 130 dB RFI Shielding
- 3-Way Ground Screw: Hex/Phillips/Slot



GHS-3 Holland 3 Way Splitter, 5-1000Mhz, DISH Approved

Dual Ground Block, DISH Approved

- High Electrical Performance for Satellite Frequency
- Single, Dual & Extended Lengths
- Patented Splice Design
- UL Listed Models Available
- Machined Threads
- High Return Loss (>35 dB)
- Lower Insertion Loss
- Flat Port Ends
- DISH Network Approved



GRB-2DHR Dual Ground Block, DISH Approved

Diplexer, Satellite, TV, DISH Approved

- Low Insertion Loss
- High Return Loss
- Increased Stop Band Isolation
- Designed Specifically for DP44 Switch
- Color Coded Insulators
- DISH Network Approved



DPD2 Holland 2 Amp Diplexer, DISH Approved



Expanding Foam

- No water required. No mess
- Expands to set posts in minutes
- Saving on shipping costs
- Requires narrower holes than concrete
- Save time
- Savings on van space



250-750 Expanding Foam for Pole Setting

EZ Dig Auger, Bracket, Kit

- Perfect tool to use with expanding foam (Item# 250-750) for satellite pole installations
- Attach any cordless drill (brush-less recommended)
- Digs a 4" wide hole in under 12 minutes
- Kit includes: auger plate, drill tower, gear reducer, 2-piece telescoping shaft, core bit with carbide grit, soil remover, assembly hardware kit



250-EZ-DIG EZ Dig Auger (Drill Attachable) & Cleaning Tool

Non-Penetrating Roof Mount

- Non-penetrating roof mount
- Mounts DBS satellite dish safely and securely on rooftop
- Ideal for dish antennas with foot mounts
- Ensures smooth and fast antenna mounting
- Accepts standard-size concrete building blocks as anchors
- Sturdy steel construction
- Includes foot-mounting bolts, nuts, washers
- 37 1/2"(L) x 24 1/2"(D)



221-110 Non-Penetrating Roof Mount

Satellite Antenna Tripod

- Satellite antenna tripod tower base
- Swing-up easy installation
- Mounts DBS dish safely and securely
- Zinc-plated 16-gauge tubular steel
- Legs OD 1 1/4"
- Mast OD 1 5/8" and 2" reversible
- 31 1/4"(W) x 45 1/2"(H) x 25 5/8"(D)



221-120 3' Antenna Tripod Kit

Satellite Dish Mount

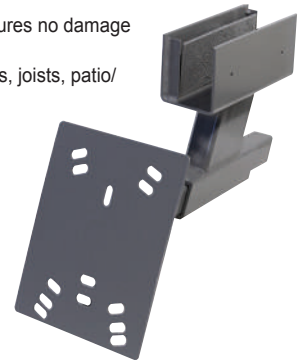
- Bracket allows mounting of satellite dish to the eave of a building
- Increases dish mounting location options
- Eliminates roof penetration
- Steel construction
- Powder-coated durable finish
- SAE Grade 5 Hardware



221-355 Fascia Mount Plate

Satellite Dish Mount

- Penetration-free attachment ensures no damage to structures
- Clamps directly to roof overhangs, joists, patio/balcony railings or fences
- Suitable for 18" - 36" dishes
- Simple removal
- Steel construction
- Powder-coated durable finish
- SAE Grade 5 Hardware



221-365 Clamp-On Dish Mount - Large

Screw, Lag, 1/2" Washer Head, Full Thread, Grade 5

- 2" Lag Screw with 1/2" washer head
- Full Thread
- Constructed of grade 5 steel
- Dacromet finish
- DISH Approved
- 100 per bag



SI-6040 Screw, Lag, 5/16" X 2", with 1/2" Washer Head, Full Thread, Grade 5, DISH approved

Screw, Lag, 1/2" Washer Head, Full Thread, Grade 5

- 3" Lag Screw with 1/2" washer head
- Full Thread
- Constructed of grade 5 steel
- Dacromet finish
- DISH Approved
- 100 per bag



SI-6041 Screw, Lag, 5/16" X 3", with 1/2" Washer Head, Full Thread, Grade 5, DISH approved



Quick Pipe Adapter

- 1 5/8" DSS easy-install pipe adapter
- 8" Length suitable for 2 7/8" to 4 1/2" ID pipes
- Adapts C-band and prime star pipes for 18" dishes
- Powder-coated durable finish



200-904 Satellite Dish Quick Pipe Adapter

Pole Ground 18GA 1-5/8" x 5.5'

- 1-5/8" O.D. – 18 Gauge
- Length: 5.5'



PR20305.5 Pole Ground 18GA 1-5/8" x 5.5'

7ft - 2.375in OD Ground Pole, Viasat Approved

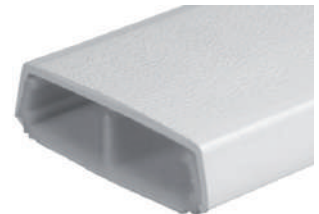
- Viasat approved 7 foot 2 3/8" OD ground pole
- End formed for maximum strength
- Crushed spin stop



GP84VS 7ft, 2.375in OD, 14 Gauge Ground Pole

Dual Channel Non-Metallic Surface Raceway

- Low-profile, two-piece raceway with durable, textured PVC
- Incl. wide adhesive tape along its entire length
- Dimensions: 2.25 in (W) x 5ft (H)



2300BACD Dual Channel Non-Metallic Surface Raceway, White

Test it Once. Test it Right.



Fiber Optic Testers (OPM/PON)



Wireless Display Tester



HDMI Display Tester



Cable Continuity Tester

- Pocket toner
- Batteries included



203-550 Pocket Toner

Cable Continuity Tester Kit

- Pocket toner test kit
- Includes F, RCA, BNC, RJ11 and RJ45 adapters
- Toner and adapters fit into slots inside durable carrying case



203-560 Pocket Toner Test Kit

Network Cable Tester

- Pocket toner test kit
- Includes F, RCA, BNC, RJ11 and RJ45 adapters
- Toner and adapters fit into slots inside durable carrying case



300-100 Ethernet Cable Tester RJ45 and BNC

8-Way Coaxial Mapper

- Quickly & easily test coax cable with F-connectors or BNC connectors with the included adapter
- Includes (8) color-coded terminators that allow you to check up to (8) cable leads in one trip!
- Displays PASS when no failures are indicated for each remote. Detects, displays, and beeps for OPEN or SHORT conditions
- Storage compartment built into unit for storing terminators
- Compact and portable design
- Mesh case included
- 9-volt battery included & required for operation



NSM1280 Ethernet Cable Tester RJ45 and BNC

Satellite Clinometer Tool

- Compass/Clinometer tool for accurate sight surveys and satellite antenna installations
- Clinometer in degrees and percentage for evaluation, slopes and heights
- Compass for azimuth readings with reverse scale to prevent error
- Protective carrying case
- Easy to read measurement cards with smooth operation
- Adjustable eyepieces



203-661 Combination Compass/ Clinometer Tool

Red Rubber Cover for 203-661

- Inclinator Rubberized Case - Dish logo
- Use with 203-661-DISH



203-662 Inclinator Rubberized Case



Cable Caddy

- Cable caddy
- Increases ease and efficiency of installing cables
- Holds up to 1000' cable reels
- Folds neatly for storage and transport
- Light weight, durable steel construction
- Dimensions: 20"(W) x 12"(H) x 18 1/2"(D)



204-407 Folding Cable Caddy

Cable Caddy, Reversible (Vertical/Horizontal)

- Increases ease and efficiency of installing cables
- Holds up to 1000ft cable reels
- Built-in carrying handles for ease of transport



204-408 Cable Caddy, Reversible (Vertical/Horizontal)

Vertical Cable Caddy Replacement Hardware

- Replacement hardware for item# 240-408



204-408-HDWR Vertical Cable Caddy Replacement Hardware

Multi Compression Tool

- Use with the following coaxial cable series: 59, 6, 7 and 11, as well as 320QR mini hardline cable
- Hardened Steel Construction
- Black Oxide Finish
- Comfortable Grip



VT200 PPC Multi Compression Tool

Self Sealing Tape, 3 3/4" W x 10' L

- ASKA Insulating Mastic Seal Tape
- 10' Foot Long x 3 3/4" Wide x 1/8" Thick Roll
- Non-Contaminating
- Non-Conductive



SEAL-334 ASKA Self Sealing Tape Moldable 3 3/4" x 10' Weatherproof

Silicone Sealant, RTV, 3 oz Tube

- Paste-like, one component acetoxo material that cures to a tough, rubbery solid when exposed to moisture in the air
- Will not sag, slump or run off – making it excellent for overhead and sidewall joints
- Will adhere to clean metal, glass, most types of wood, RTV silicones, vulcanized silicone rubber and ceramics
- Excellent resistance to weather, temperature extremes and caustic environments
- Meets NSF Standard 51 and FDA/USDA requirements for use in establishments operating under Federal Meat and Poultry Inspection Program
- DISH approved



31530 Accumetric Silicone Sealant, RTV, 3 oz Tube

Self-Locking Cable Tie

- Self-locking tie-wrap
- Bent finger-grip tip clear virgin nylon 6/6
- UL94V2 Self extinguishing



400-828 100ct 8" 50lb Nylon Cable Tie, BK
400-832 100ct 12" 50lb Nylon Cable Tie, BK

Blue Boot Covers

- Made from high-quality polyethylene plastic
- Durable and reliable
- Helps keep dirt, dust and moisture off of work shoes for reentry into environments where cleanliness and hygiene are important



AX98B Blue Boot Covers, 50 pairs

Resale Certificate

I HEREBY CERTIFY:

1. I hold valid seller's permit number: _____

2. I am engaged in the business of selling the following type of tangible personal property:

3. This certificate is for the purchase from _____ of the item(s) I have listed in paragraph 5 below.

4. I will resell the item(s) listed in paragraph 5, which I am purchasing under this resale certificate in the form of tangible personal property in the regular course of my business operations, and I will do so prior to making any use of the item(s) other than demonstration and display while holding the item(s) for sale in the regular course of my business. I understand that if I use the item(s) purchased under this certificate in any manner other than as just described, I will owe use tax based on each item's purchase price or as otherwise provided by law.

5. Description of property to be purchased for resale:

6. I have read and understand the following:

For Your Information: A person may be guilty of a misdemeanor under Revenue and Taxation Code section 6094.5 if the purchaser knows at the time of purchase that he or she will not resell the purchased item prior to any use (other than retention, demonstration, or display while holding it for resale) and he or she furnishes a resale certificate to avoid payment to the seller of an amount as tax. Additionally, a person misusing a resale certificate for personal gain or to evade the payment of tax is liable, for each purchase, for the tax that would have been due, plus a penalty of 10 percent of the tax or \$500, whichever is more.

COMPANY NAME

SIGNATURE OF PURCHASER, PURCHASER'S EMPLOYEE OR AUTHORIZED REPRESENTATIVE

 _____
PRINTED NAME OF PERSON SIGNING

TITLE

ADDRESS OF PURCHASER

TELEPHONE NUMBER

()

DATE



Charge Card Application

Steren Electronics International, LLC.
6910 Carroll Road, #200
San Diego, California 92121
Tel (800) 266-3333

Important Information

We accept VISA, MASTERCARD, DISCOVER and AMERICAN EXPRESS.
Customers exempt from sales tax must submit a signed resale certificate.

General Information

Company Name		Resale #
Street Address		Tax ID No.
Other Authorized Mailing Address		
City	State	Zip
Telephone	Fax	Email

Business Profile

Primary Charge Account Number		Exp Date
Issuing Bank	Card Type	Card Validation Code
Full Name on Card		
Billing Statement Street Address		
City	State	Zip

Secondary Charge Account Number		Exp Date
Issuing Bank	Card Type	Card Validation Code
Full Name on Card		
Billing Statement Street Address		
City	State	Zip

Authorization

I authorize the user of the above credit card(s)

(Authorized Signature)	Date
(Authorized Signature)	Date

The undersigned cardholder hereby authorizes Steren Group of Companies to charge to the card account (through signature on file) as indicated on this form, any transactions while the account is in effect. It is also noted either party may cancel this agreement upon written notification to the other party. When calling in, you will be asked for your password as a secondary security precaution.



Credit Application

Mail to: Steren Electronics International, LLC.
Attention: New Accounts
6910 Carroll Road, #200
San Diego, California 92121
Tel (800) 266-3333

Important Information

This information is for the exclusive use of our Credit Department and will be held in the strictest of confidence.

Your current year-end financial statement (balance sheet and income statement) must accompany this application if the credit line desired exceeds \$5000. Unaudited financial statements must be signed and dated by the respective owner or officer. Please indicate what period is covered by each statement.

Customers exempt from sales tax must submit a signed resale certificate.

General Information

Business Legal Name		Resale #
Business Trade Name (dba) or Previous Name		Tax I.D. No.
Street Address (required)	P.O. Box	
City	State	Zip
Telephone	Fax	Email

Business Profile

Description of Primary Business		
Number of Employees		
Credit Line Desired	Annual Sales Volume	
Legal Structure of the Business	<input type="checkbox"/> Proprietorship	<input type="checkbox"/> Partnership <input type="checkbox"/> Corporation
State in Which Chartered	Year Business Established	
Length of Time at the Above Address	<input type="checkbox"/> Own	<input type="checkbox"/> Lease
Number of Branches/Outlets	Square Footage	
Have You Ever Filed for Bankruptcy?	<input type="checkbox"/> No	<input type="checkbox"/> Personal <input type="checkbox"/> Business
Date Filed	Current Status	
Corporate Officers or Principal Owners		
Name	Title	Telephone
Name	Title	Telephone
Name	Title	Telephone

Personal Credit Information

Authorization to Run Credit Yes

By checking Yes you are giving Steren Electronics International LLC. permission to check your credit report. You MUST check the box before we can process your application.

Name	Name
Home Street Address	Home Street Address
City/State/Zip	City/State/Zip
Telephone	Telephone
Social Security No.	Social Security No.
Driver License No.	Driver License No.

Please complete both sides

Bank Information

Bank Name		
Street Address	P.O. Box	
City	State	Zip
Account Officer	Telephone	FAX
Checking Account No.	Loan Account No.	

Bank Name		
Street Address	P.O. Box	
City	State	Zip
Account Officer	Telephone	FAX
Checking Account No.	Loan Account No.	

Primary Trade References

(Related Industry, Purchases During Last 12 Months)

Name	Telephone	FAX	
Address	City	State	Zip
Contact	Account No.		

Name	Telephone	FAX	
Address	City	State	Zip
Contact	Account No.		

Name	Telephone	FAX	
Address	City	State	Zip
Contact	Account No.		

Credit Agreement

This credit application and agreement is submitted to Steren Electronics International, LLC. (hereafter referred to as Steren), to obtain trade credit. Customer agrees to make payment in full to Steren for all amounts due according to Steren's invoices. Customer agrees to pay Steren, as interest, an amount equal to 11/2% per month, or the maximum provided by law (whichever is less) for invoice amounts that are past due. A \$15.00 charge will be assessed for any returned checks. Should customer default in such payment(s), Steren shall have the right, without notice to Customer, to declare all invoice amounts due and payable. In the event that Steren should commence any action or actions, or otherwise seek to enforce this agreement against Customer, Customer agrees to pay reasonable attorney(s) fees, court costs and other expenses incurred by Steren, whether or not suit is filed. This agreement is strictly confidential and is not transferable or assignable without the prior consent of Steren. Customer agrees that any change in liability from any debts incurred to Steren due to a change in Customer's form of business, shall not be effective as to Steren, until Steren receives actual notice of the change by certified mail. This agreement is entered into in, and shall be governed by and construed in accordance with the laws of the State of California. By execution hereof, Customer agrees to be subject to the jurisdiction of the courts of the State of California.

Authorization

By signing this agreement, I/we authorize the release of credit and banking information, to Steren Electronics International, LLC. by the references listed above for the purpose of establishing credit.

Company Name _____

Signed at _____ Date _____

Officer Owner Partner _____ (Authorized Signature) Name and Title _____

Signed at _____ Date _____

Officer Owner Partner _____ (Authorized Signature) Name and Title _____

Product Index

2300BACD	32	310-106	16	JRG6SNS-072	17
31530	27	310-107	16	JRG6SSNS-072	17
144823	30	310-108	16	JRG6TSGUSC-036	17
200-090BK	28	310-110	16	JRG6TSGUSC-072-TDC-1	17
200-267WH	28	310-120	16	NSM1280	31
200-904	30	310-140	16	SEAL-334	32
203-550	31	310-201	22	SI-6040	29
203-560	31	310-202	22	SI-6041	29
203-661	31	310-203	22	PP-206-275	27
203-662	31	310-204	22	PP-308-503	14
204-407	32	310-206	22	PP-308-505	14
204-408	32	310-320	23	PP-308-506	14
204-408-HDWR	32	310-324	23	PP-308-507	14
221-110	29	310-334	23	PP-308-509	14
221-120	29	310-348	23	PP-308-512	14
221-355	29	310-349	23	PP-308-514	14
221-365	29	310-366	23	PP-308-515	14
250-750	29	310-367	24	PP-308-525	14
250-EZ-DIG	29	310-372	24	PR-20305.5	30
257-606BK	27	310-390	24	PPC-EX6XL	28
300-064	20	310-392	24	VT200	32
300-068	20	310-394	24		
300-100	31	310-399	24		
300-164	20	310-410WH	20		
300-168	20	310-415WH	20		
301-064	20	310-420WH	19		
301-068	20	310-485WH	19		
301-172	20	328-950	16		
301-176	21	371-514	12		
301-178	21	371-554	12		
301-191	21	372-614	12		
301-840	13	400-828	32		
304-007	13	400-832	32		
304-015	13	517-303	18		
308-201	15	517-306	18		
308-202	15	517-310	18		
308-203	15	517-312	18		
308-205	15	517-330	18		
308-207	15	517-350	18		
308-210	15	517-386	18		
308-215	15	517-388	18		
308-225	15	528-006	18		
308-230	15	550-001	24		
308-501	14	550-020	24		
308-503	14	550-030	24		
308-505	14	550-100	25		
308-507	14	550-105	25		
308-514	14	550-200	25		
308-550	14	550-205	25		
308-600	15	905-105	26		
308-601	15	905-111	26		
308-603	15	905-112	26		
308-605	15	AF-81CB	28		
308-607	15	AX98B	32		
308-610	15	BL-526-061	18		
308-614	15	BL-526-105	6		
308-625	15	BL-526-106	7		
308-650	15	BL-526-108	8		
308-902	16	BL-526-109	9		
308-903	16	DES1001-BK	27		
308-905	16	DES1002-BK	27		
308-907	16	DES1005-WH	27		
308-910	16	DPD2	28		
308-914	16	GHS-2	28		
308-925	16	GHS-3	28		
308-975	16	GP84VS	30		
310-043	20	GRB-2DHR	28		



United States Corporate Headquarters

6910 Carroll Road, #200
San Diego, California 92121
Phone: 800-266-3333 - Fax: 858-546-5001

East Coast Distribution

5465 East Raines Road, Suite 1
Memphis, Tennessee 38115
Phone: 901-362-6670 - Fax: 901-362-6671

www.sterenusa.com



**United States
Corporate Headquarters**

6910 Carroll Road, #200
San Diego, California 92121
Phone: 800-266-3333
Fax: 858-546-5001

Please visit us at:
www.sterenusa.com