

THE ANALYSIS OF PCB CONGENERENERS USING A SELECTIVE PCB CAPILLARY COLUMN

Dan DiFeo Jr. — SGE, Incorporated. 2007 Kramer Lane, Austin, Texas 78758, USA.
 Angus Hibberd, Gerard Sharp — SGE International Pty. Ltd. 7 Argent Place, Ringwood 3134, Australia.

INTRODUCTION

The use of Polychlorinated Biphenyl's (PCBs) compounds was common place prior to 1970 before their affect on public health came to light. Applications such as heat transfer fluids, dielectrics (insulators), in transformer cooling liquids, heat-transfer and hydraulic fluids, vacuum pump fluids, lubricants, plasticizers, fillers in investment casting waxes, surface coatings and sealants, pesticide extenders, and copy paper were common applications for PCB's. The use of PCB's is now banned in many countries due to their harmful effects on public health. A select few of the planar PCB's exhibit dioxin like properties and toxicities and the carcinogenic effects of many of the other PCB's have brought the need for strict monitoring procedures within environmental regulating bodies around the world. Monitoring of soil, water and food stuffs for PCB's is common place in environmental laboratories.

WHAT ARE PCB'S?

Polychlorinated Biphenyl's consist of 209 congeners and are classed as persistent organic pollutants (POP's). They are considered to be one of the "dirty dozen", a group of persistent organic pollutants which include dioxins, furans and a number of organochlorine pesticides

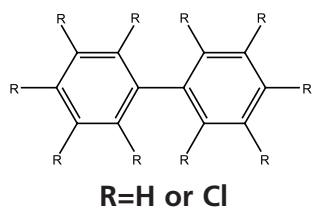


Figure 1. Basic structure of Polychlorinated Biphenyl congeners.

such as DDT because of their extreme chemical stability and ability to accumulate within the food

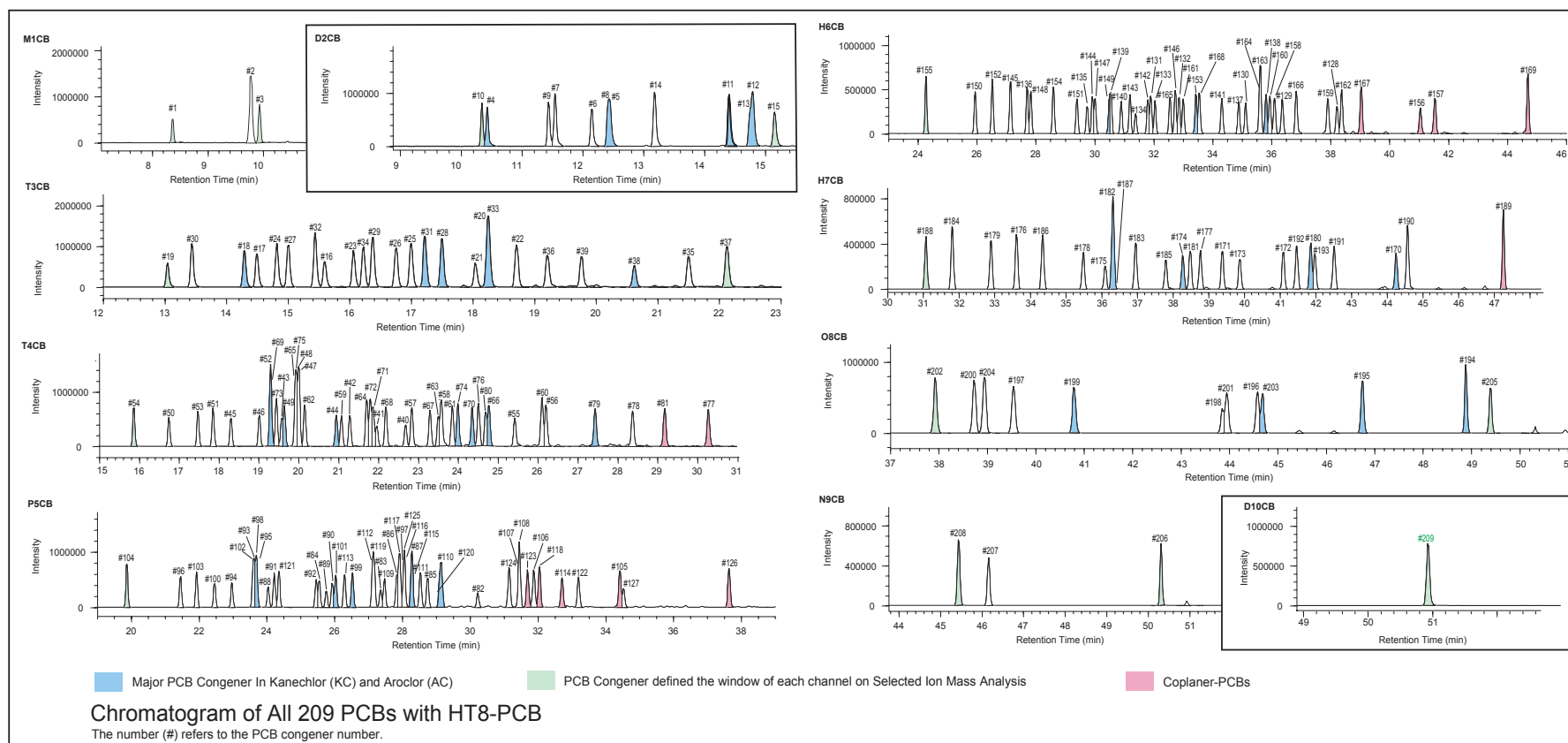


Figure 2. Chromatograms of the 209 PCB congeners analyzed on HT8-PCB.

chain. Figure 1 shows the basic structure of polychlorinated biphenyl's where the R groups can be any combination of chlorine or hydrogen atoms.

THE ANALYSIS

The standard columns used for the analysis of PCBs in environmental samples are the 5% Phenyl Phase or an SGE HT8 carborane Phase. The HT8-PCB capillary column from SGE has been specifically optimized to give the best separation of any column, of the complete 209 congeners from one capillary column.

PCB congeners are non-polar compounds that separate predominantly on boiling point when analysed on non-polar columns such as the standard 5% phenyl columns. Due to the similar structures of many of the PCB's, the boiling points are very similar and many of the

seven indicator congeners (IUPAC No's 28, 52, 101, 118, 153, 138 and 180).

The added advantage of the HT8-PCB column is that with the extra polarity and specific interactions with the PCB congeners there is no sacrifice of thermal stability. The HT8-PCB column has a maximum temperature of 360/370°C, comparable or better than most standard 5% phenyl columns commonly used for PCB analyses. Eluting the high boiling PCB congeners on the HT8-PCB capillary column is not a problem.

CONCLUSION

The SGE HT8-PCB capillary column has been specifically designed with the analysis of the 209 PCB congeners in mind. The

unparalleled separation of important and extremely difficult to resolve congeners makes the HT8-PCB capillary column the first choice for this type of analyses.

ACKNOWLEDGEMENT

Chisato Matsumura¹, Masahiro Tsurukawa¹, Takeshi Nakano¹, Tatsuya Ezaki² and Makoto Ohashi²

¹Hyogo Prefectural Institute of Public Health and Environmental Sciences, ²SGE Japan Inc.

congeners are unable to be separated on non-polar columns. The HT8-PCB capillary column gives unique separation of several difficult-to-resolve congeners. The unique partitioning properties of the HT8 capillary column comes from the carborane phase incorporated into the polysiloxane backbone. The carborane phase interacts preferentially with ortho substituted PCB's giving separation of these components to a greater extent than conventional 5% phenyl capillary columns. Figure 2, shows the analysis of the complete 209 congeners.

The HT8-PCB can easily resolve the Dioxin like PCB's (77, 81, 126, 169, 105, 114, 118, 123, 156, 157, 167 and 189) from the other congeners, making quantitation easy.

The HT8-PCB column also baseline resolves the very difficult-to-separate congeners 28-31, 34-23 and 163-138 along with the IUPAC



SGE, Incorporated
 2007 Kramer Lane, Austin, Texas 78758, USA
 Toll Free: (800) 945 6154 Tel: (512) 837 7190 Fax: (512) 836 9159
 Email: usa@sge.com Web: www.sge.com