

BENEFITS OF AN INTEGRATED CAPILLARY LC COLUMN SYSTEM

Hans-Jürgen Wirth¹, Jana Habsuda¹, Peter Dawes¹, Ern Dawes¹ and Richard Henry²
¹SGE International Pty. Ltd. 7 Argent Place, Ringwood 3134, Australia. ²SGE Consultant

INTRODUCTION

With the desire to analyse trace components, such as marker proteins or drug metabolites in very complex biological samples, comes the need for *optimized micro/nano liquid LC systems*. A crucial factor in the optimization of a chromatographic system is the reduction of band broadening. In order to reduce band broadening, the amount of extra-column volume has to be minimized. Thus, all components of the ProteCol™ capillary LC system, the column, the tubing, filtering connectors and unions were optimized to provide the best possible conditions for a good separation (**Figure 1**).

MAIN FEATURES OF INTEGRATED ProteCol™ CAPILLARY LC COLUMN SYSTEM

The range of products for capillary LC (developed by SGE) is designed to keep the extra column void volumes at a minimum. The integrated column design combines the *column body, frits* and *connection tubing in a single unit*, which can be directly attached to the injector and detector, thus reducing the number of connections (**Figure 2**). To allow the perfect chromatography, an integrated column design is complemented by *in-line filters, guard columns* and *trap-columns* for sample concentration.

Tubing connectors are commonly a source of void volume either inherited by their design or introduced by operator error. The connection tubing (in SGE columns) is made of a *fused silica lined PEEK™ tubing, PEEKsil™*. The tubing *ends are precision square cut* and then *polished* to allow *virtually dead-volume-free butt connections* (**Figure 3**).

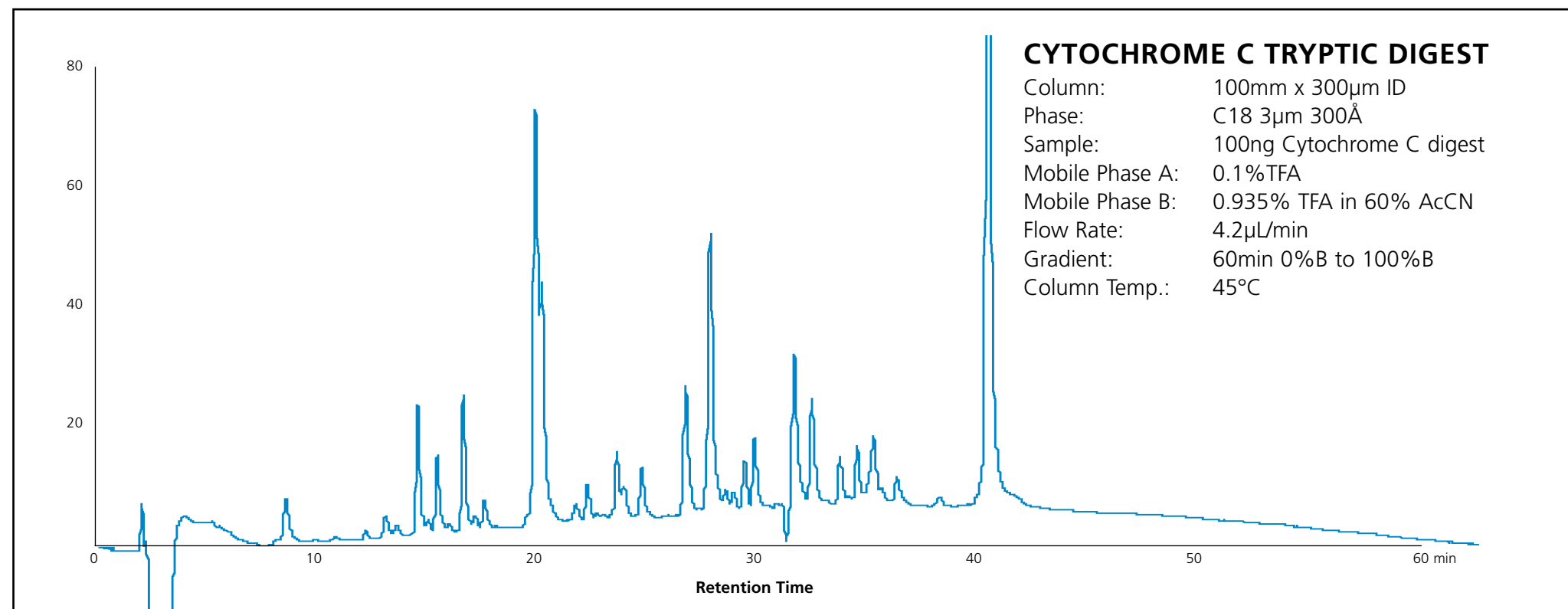


Figure 1. Sample chromatogram.

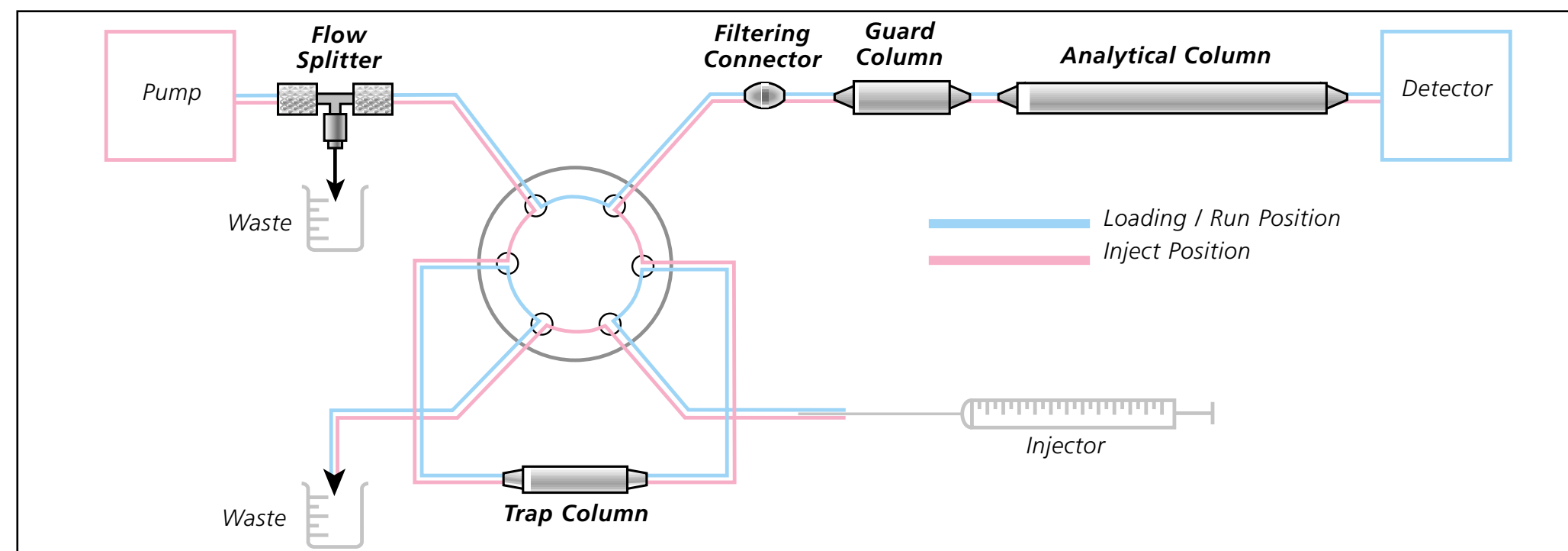


Figure 2. Integrated ProteCol™ capillary LC column system.



Figure 3.

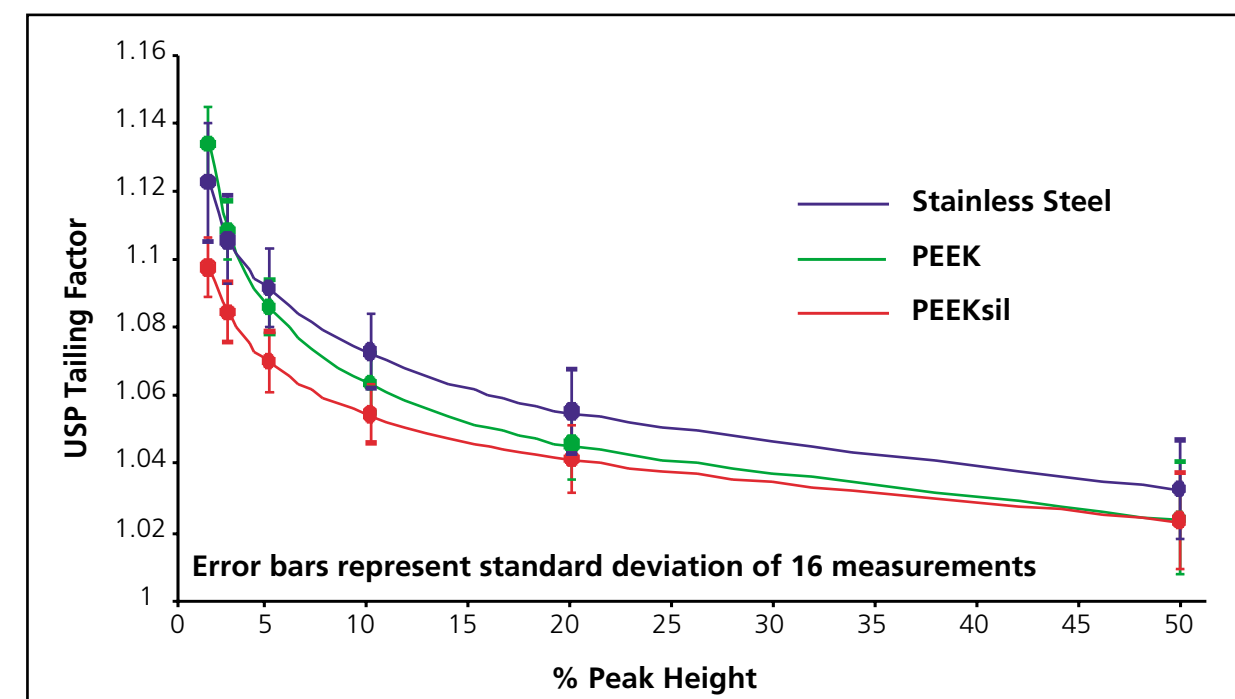


Figure 4. Comparison between PEEK™, PEEKsil™ and stainless steel tubing.

BENEFITS OF PEEKsil™

PEEKsil™ (fused silica tubing coated with PEEK™) tubing has all the benefits of fused silica such as inertness and smooth uniform surface characteristics but is far more rugged due to the PEEK coating. Comparison of the sample distribution when pumped through 1000mm of PEEK, PEEKsil and stainless steel tubing (of 100µm ID each) is shown in **Figure 4**.

CONCLUSIONS

To take full advantage of the benefits of capillary LC, each part of the flowpath has to be optimized in order to minimize sample spreading. The ProteCol™ range of columns and accessories provide a complete system to adjust LC to the needs of capillary LC. Individual components can be easily reconfigured to obtain an integrated solution for a vast range of applications without compromising in performance.

ACKNOWLEDGEMENT

Dr Robert Moritz, Joint Proteomics Laboratory, Ludwig Institute For Cancer Research & The Walter and Eliza Hall Institute of Medical Research, Parkville, Victoria 3050, Australia.



SGE, Incorporated
 2007 Kramer Lane, Austin, Texas 78758, USA
 Toll Free: (800) 945 6154 Tel: (512) 837 7190 Fax: (512) 836 9159
 Email: usa@sge.com Web: www.sge.com