

Injection port | **Endura-Seals**

Give your GC the seal of approval

Desired septa attributes:

- Reliably seal against the carrier gas pressure in the inlet.
- Capable of being pierced and resealing time after time.
- Does not contaminate or bleed material into the chromatographic system.

Features and benefits

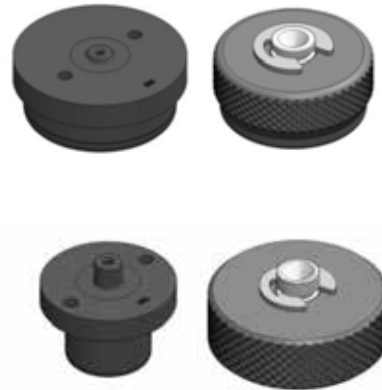
- Resilient to needle wear and tear.
- Eliminates coring.

Recommended applications

Automated analysis that requires long run times.

Product specifications

Sizes available (mm): 11 and Shimadzu plug style.



Material	Durability	Resealing	Required needle	Max Pressure	Maximum injector temperature
Silicone	Excellent	Good	23 guage	100 PSI	400°C

For more information about this product visit www.trajanscimed.com or contact techsupport@trajanscimed.com.