

# Connections | SilFlow® GC 3 port splitter

Improve your GC connectivity

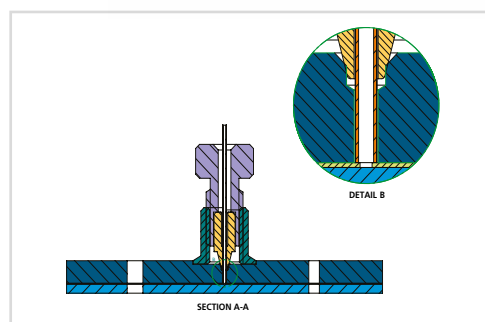
SilFlow® delivers a flexible chromatography solution using planar microchannel technology. SilFlow is an innovation in design and fabrication resulting in a highly efficient and reliable microfluidic platform that improves your GC connectivity to enable maximum chromatography performance.

## Features and benefits

- Chemically inert.
- Low dead volume.
- Superb operational stability.
- Easy to install.
- Leak free.

## Recommended applications

- Column splitting.
- Detector splitting.
- Backflush.
- Anywhere a tee-piece has traditionally been used.



Fused silica to SilFlow connection system using SilTite FingerTite® metal ferrule.

## Product specifications

Description	Tubing dimensions			Pack size
	Port A	Port B	Port C	
GC kit (1.1)	0.25/0.32 mm ID	0.25/0.32 mm ID	1.1 mm OD	Kit
GC kit (0.53)	0.25/0.32 mm ID	0.25/0.32 mm ID	0.53 mm ID	Kit
GC kit (0.25/0.32)	0.25/0.32 mm ID	0.25/0.32 mm ID	0.25/0.32 mm ID	Kit
GC MCD (1.1)	0.25/0.32 mm ID	0.25/0.32 mm ID	1.1 mm OD	1
GC MCD (0.53)	0.25/0.32 mm ID	0.25/0.32 mm ID	0.53 mm ID	1
GC MCD (0.25/0.32)	0.25/0.32 mm ID	0.25/0.32 mm ID	0.25/0.32 mm ID	1
<b>Replacement parts</b>				
SilFlow nuts	-			10
SilFlow ferrules 0.35 mm ID	For 0.32 mm OD tubing			10
SilFlow ferrules 0.4 mm ID	For 0.36 mm OD tubing			10
SilFlow ferrules 0.5 mm ID	For 0.43 mm OD tubing			10
SilFlow ferrules 0.55 mm ID	For 0.45 mm OD metal tubing			10
SilFlow ferrules 0.7 mm ID	For 0.68 mm OD tubing			10
SilFlow ferrules 0.75 mm ID	For 0.71 mm OD metal tubing			10
SilFlow ferrules 0.8 mm ID	For 0.79 mm OD tubing			10
SilFlow ferrules 1.1 mm ID	For 1.07 mm OD tubing			5
SilFlow blanking ferrules and pins	-			5
SilTite FingerTite tool	-			1

For more information about this product visit [www.trajanscimed.com](http://www.trajanscimed.com) or contact [techsupport@trajanscimed.com](mailto:techsupport@trajanscimed.com)