

SEALTIGHT™ VALVES INSTRUCTIONS

Proper care ensures improved valve performance and long life

SGE SEALTIGHT™ valves are precision instruments requiring careful use. All valves are tested to ensure they pass leak tests and are designed to offer reliable performance for a long period of time. However the following information will ensure you obtain the best performance from your SGE valve.

1. Solvent Compatibility

All wetted parts are made of PTFE or Kel-F® which have excellent chemical resistivity. However avoid using THF and halogenated solvents.

2. Cleaning

Clean external surface using a soft cloth. Although not advisable, the rotor face can be cleaned by disassembling the valve, (refer to section 4).

DO NOT IMMERSE THE VALVE IN SOLVENT

3. Temperature

Valves are rated to 120 °C. However do not expose valve continuously to elevated temperatures as this may reduce sealing capabilities.

DO NOT HAND CYCLE OR RE-TIGHTEN VALVE WHEN AT ROOM TEMPERATURE

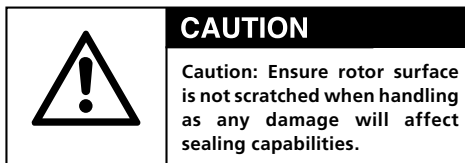
4. Disassembling the Valve

Tools required are 5/8" Open ended Spanner, 8" Shifter, 5/64" Allen key

4.1. Remove grub screw (2) from handle (1) and pull handle off.

4.2. Carefully hold valve body (7) in jaws of 8" Shifter and undo top nut (3) with 5/8" Spanner (Anticlockwise).

4.3. Grasping rotor shaft (5) firmly between thumb and index finger, tug to remove rotor (6).



To reassemble the valve reverse the above instructions. However do not over tighten valve on reassembly.

5. Repair of Valve

Once the valve has become worn it cannot be repaired. There are no replacement parts.

6. Thread Compatibility

Threaded ports are 1/4-28 UNF so valves can be fitted onto any SGE 5 mL-100 mL syringe.

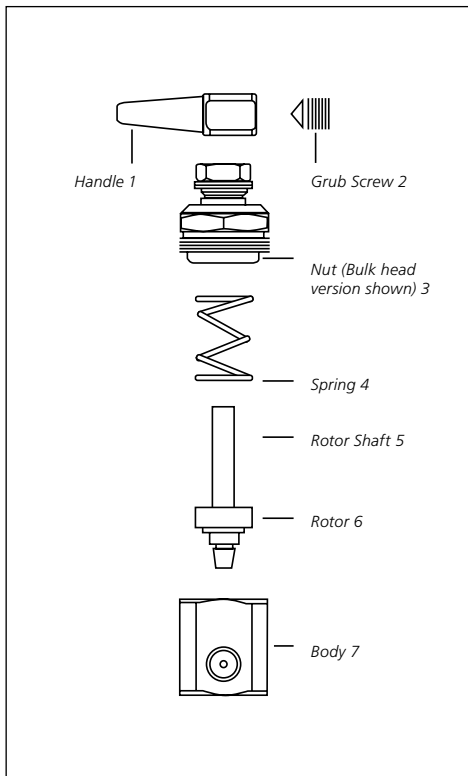
WARRANTY

All SGE valves are warranted to be free of material and workmanship defects. No other warranty is expressed or implied. Any valve failing due to such defects will be replaced free of charge provided an explanation is given. Do not return failed or damaged valves unless requested by SGE to do so.

PLEASE DO NOT RETURN VALVE CONTAMINATED WITH RADIOACTIVE, INFECTIOUS OR HAZARDOUS MATERIALS

COMMENTS

Your comments are welcomed and will be noted and promptly acted on, where possible.



Valve Assembly

AUSTRALIA & PACIFIC REGION

SGE Analytical Science Pty Ltd
Toll Free: 1800 800 167
Tel: +61 (0) 3 9837 4200
Fax: +61 (0) 3 9874 5672
Email: support@sge.com

JAPAN

SGE Japan Inc
Tel: +81 45 222 2885
Fax: +81 45 222 2887
Email: japan@sge.com

EUROPE

SGE Europe Ltd
European Head Office
Toll Free: 00800 2790 8999
Toll Free Fax: 00800 2626 2609
Tel: +44 1908 568 844
Fax: +44 1908 566 790
Tel France: +33 1 69 29 80 90
Fax France: +33 1 69 29 09 25
Tel Germany: +49 (0) 6155 / 60746 0
Fax Germany: +49 (0) 6155 / 60746 50
Email: europe@sge.com

UNITED STATES OF AMERICA

SGE Incorporated
Toll Free: (800) 945 6154
Tel: +1 512 837 7190
Fax: +1 512 836 9159
Email: usa@sge.com

 **SGE Analytical Science**
www.sge.com