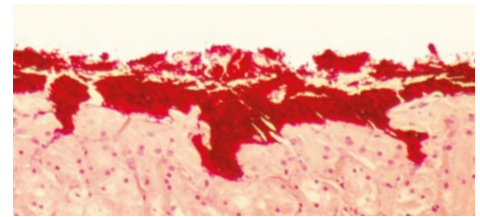
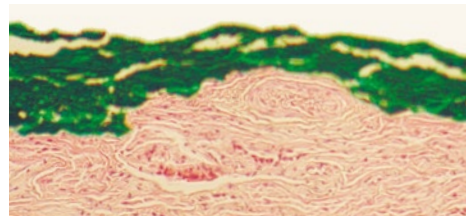
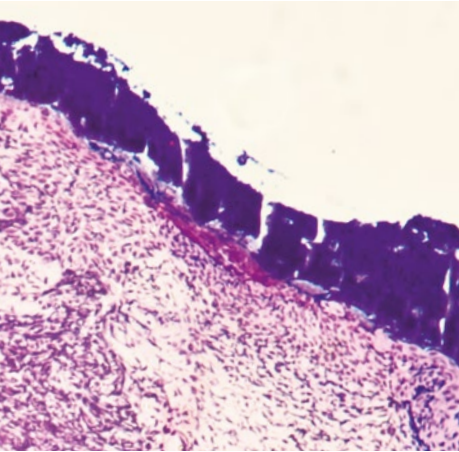
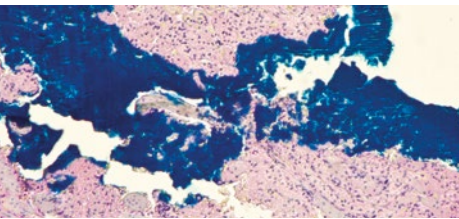


THE Davidson Marking SYSTEM[®]



Davidson Marking System[®]

Tissue marking dye

Used by the top cancer hospitals in the USA, The Davidson Marking System[®] (DMS) tissue marking dyes are the highest quality tissue dyes available and have been in use for over 30 years. Developed specifically for the orientation of tissue specimens, DMS dyes can be used in Mohs or any other application requiring the orientation of tissue specimens. DMS tissue dyes are also appropriate for marking small individual samples like prostate biopsies or punch biopsies.

Features and benefits

- Are suitable for both fresh and frozen tissue samples.
- Can be used pre- or post- formalin.
- Adhere to tissue throughout processing.
- Are easily visible under the microscope.
- Can be easily distinguished from each other.

Individual bottles

The Davidson Marking System tissue marking dyes are available in two individual bottles sizes and eight colors:

- Provided in either 2 oz (59 mL), or 8 oz (237 mL) bottles.
- Available in green, yellow, red, black, blue, orange, violet, and lime.



Multi-color set

The Davidson Marking System tissue marking dyes can also be purchased in a multi-color set with a sturdy, easy to clean plastic holding tray and 50 applicator sticks.

A 5-color set includes:

- 5 x 2 oz (59 mL) tissue marking dyes (1 each of Green, Yellow, Black, Red, Blue).
- 50 x applicator sticks.
- 1 x plastic holding tray.



⚠ Warning

Permanent tissue dye for use on excised tissue only. Do not apply to a living patient.

Visit us at www.trajanscimed.com for additional product information.

*The Davidson Marking System is a registered product of Bradley Products, Inc. USA.
Trajan Scientific and Medical is a registered trademark of Trajan Scientific Australia Pty Ltd.*

CE IVD 000577

Trajan Scientific and Medical

Science that benefits people

Trajan is actively engaged in developing and delivering solutions that have a positive impact on human wellbeing. Our vision revolves around collaborative partnerships that improve workflows, delivering better results.