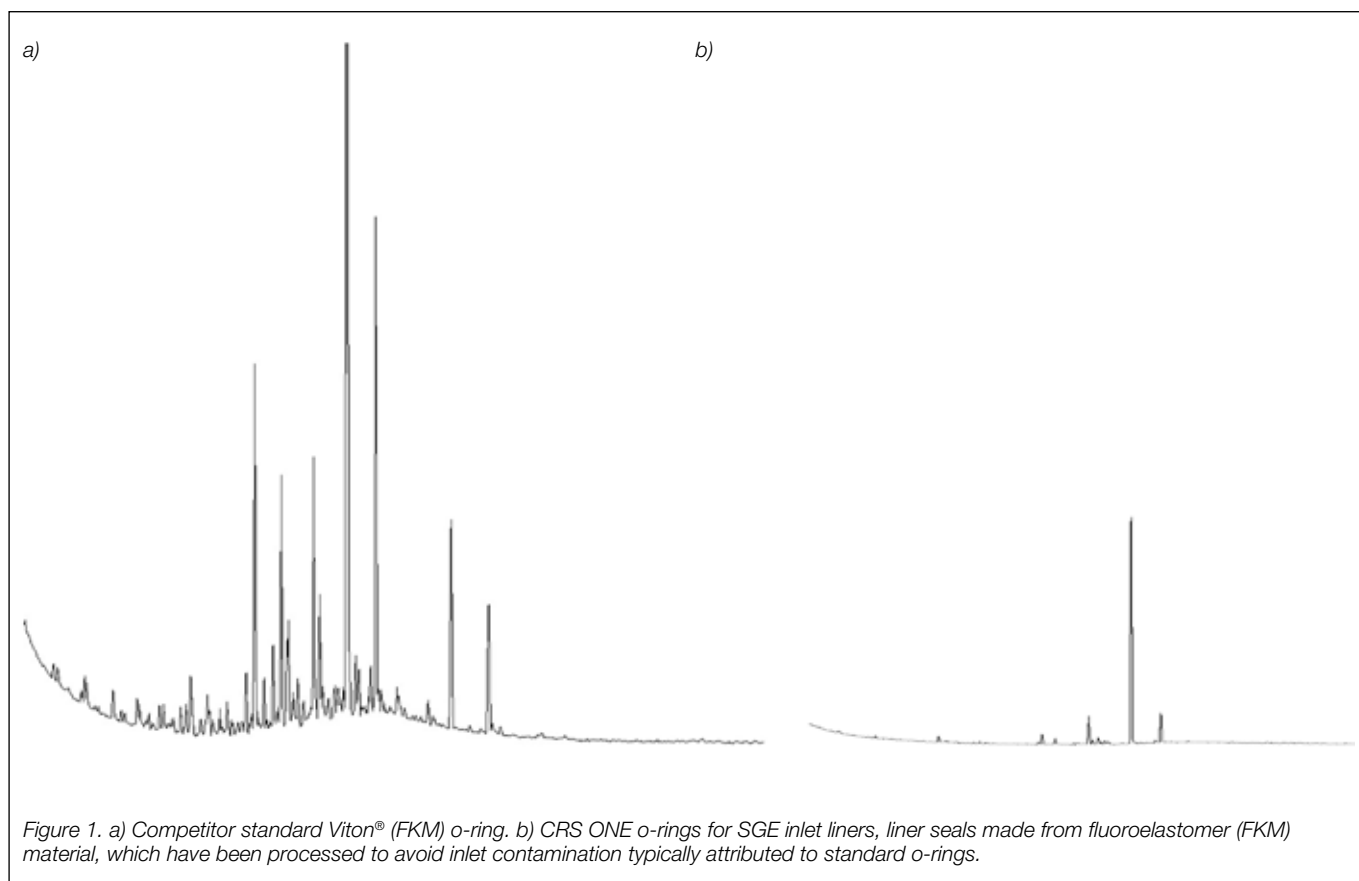


Analysis of contaminants from inlet liner o-rings

CRS ONE o-ring

CRS ONE o-ring part number	0726782 (B010)		
GC column phase	Equivalent to SGE BP5	Carrier gas	He
Column	15 m x 0.25 mm ID x 0.25 µm	Carrier gas flow	1.0 mL/min
Sample	FKM o-ring solvent extractable contaminants: a) Competitor o-rings and b) CRS ONE o-rings placed in ethyl acetate to extract any soluble volatiles	Constant flow	On
		Injection mode	Split flow
		Injection temperature	250°C
Initial temperature	70°C, 2.5 min	Liner type	Equivalent to SGE OptChem taper FocusLiner with quartz wool and pre-fitted CRS ONE o-ring, 4 mm ID, length 78.5 mm (part number 0926200301 PK1, part number 09262003 PK5)
Rate 1	20°C/min to 300°C		
Final temperature	300°C, 11 min		
Detector	FID		



For more information visit www.trajanscimed.com or contact techsupport@trajanscimed.com

Viton® is a registered trademark of The Chemours Company FC, LLC.