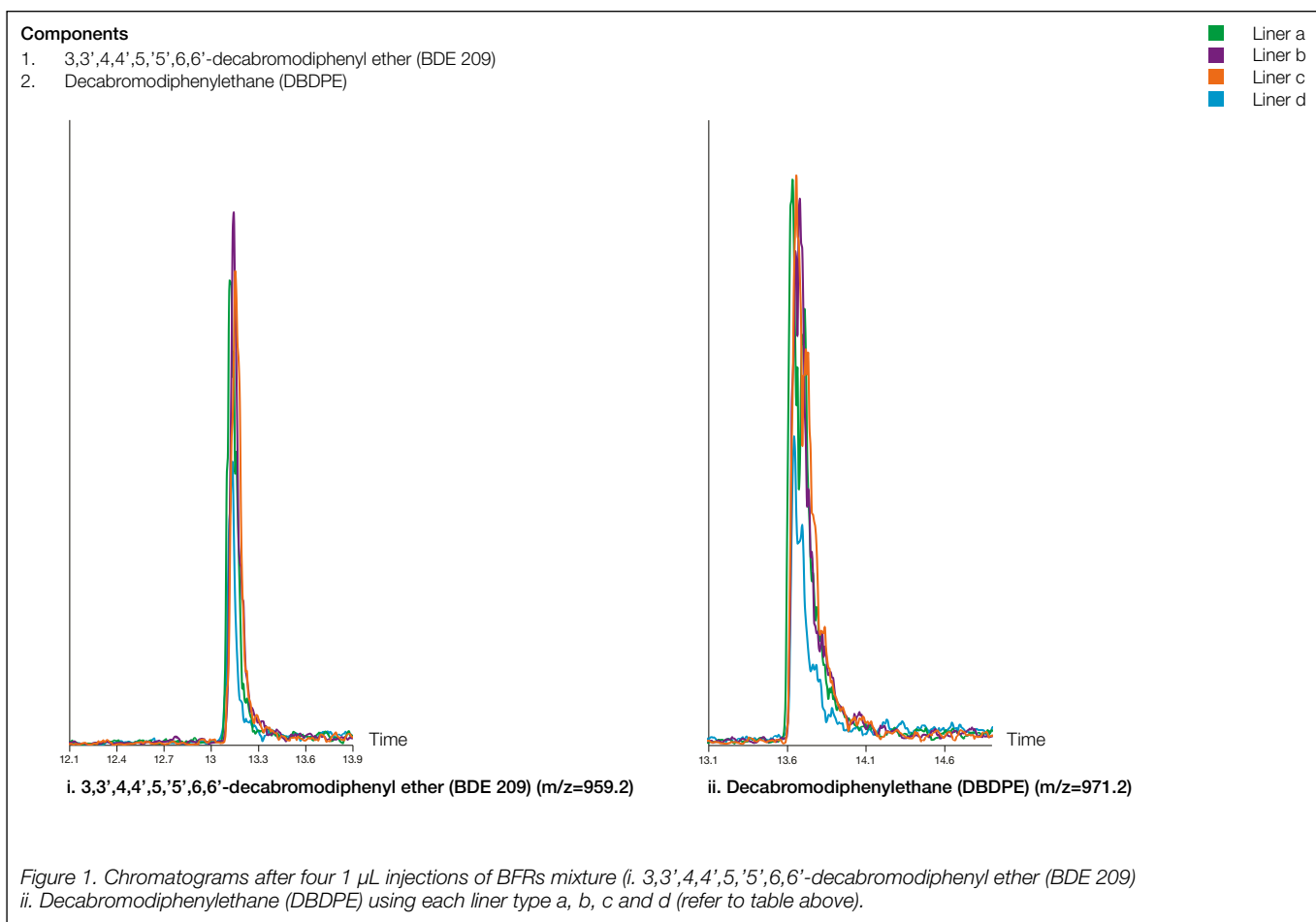


Analysis of brominated flame retardants (BFRs) in persistent organic pollutants (POPs)

SGE OptChem inlet liner

SGE OptChem™ inlet liner part numbers 0926201901 PK1, 09262019 PK5			
Liner types	a. SGE OptChem taper inlet liner with quartz wool and pre-fitted CRS ONE o-ring, 4 mm ID, length 78.5 mm (part number 0926201901, PK1; part number 09262019, PK5)	GCMS	Agilent 7890A Gas Chromatograph
	b. SGE OptChem taper FocusLiner with quartz wool and pre-fitted CRS ONE o-ring, 4 mm ID, length 78.5 mm (part number 0926200301, PK1; part number 09262003, PK5)	Sampler	Agilent 7693, 5.0 µL syringe
	c. SGE OptChem taper FocusLiner with pre-fitted CRS ONE o-ring, 2.3 mm ID, length 78.5 mm (part number 0926211101, PK1; part number 09262111, PK5)	Injection mode	1 µL pulsed splitless, 250°C, injection pulse 32 psi (1.5 min), purge flow to split vent 50 mL/min (1 min)
	d. Competitor deactivated liner	Carrier gas	He, constant 4 mL/min
Column	(5%-diphenyl), 95% dimethylpolysiloxane 15 m x 0.25 mm x 0.10 µm	Oven	90°C (1 min), 20°C/min to 350°C (1 min)
Guard column	430 µm OD x 320 µm ID x 2 m length deactivated fused silica tubing (part number 0624470)	Run time	15 min
Septa	11 mm OD BTO premium high-temp center guide GC septa (part number 041898, PK25)	MS	Agilent 7000C with electron impact ionization source operated in multiple reaction monitoring (MRM) mode
Sample	Brominated flame retardants (BFRs) mixture of BDE 209 at 450 pg/µL and DBDPE at 2500 pg/µL	Ionization mode	Positive
		Source	150°C
		Quadrupole 1 and 2	No heating
		Transfer line	350 °C



For more information visit www.trajanscimed.com or contact techsupport@trajanscimed.com

Specifications are subject to change without notice.
Agilent is a registered trademark of Agilent Technologies, Inc.