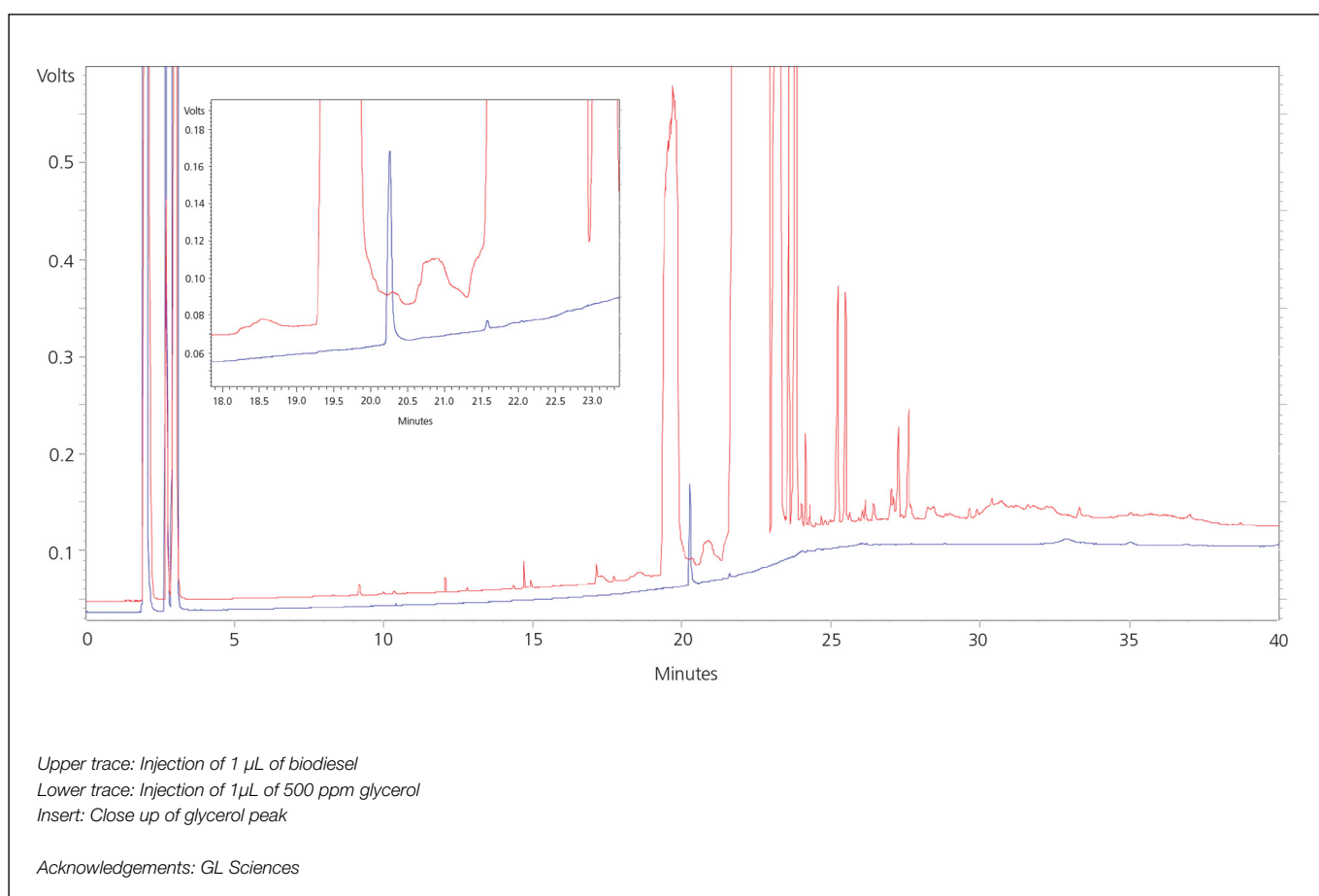


Analysis of glycerol in biodiesel

SolGel-WAX™

Column part number	054796		
Phase	SolGel-WAX™	Carrier gas	He, 14 psi
Column	30 m x 0.25 mm x 0.25 µm	Carrier gas flow	1.2 mL/min
Sample	500 ppm glycerol and biodiesel	Constant flow	On
Initial temperature	50°C, 2 min	Average linear velocity	29 cm/sec at 50°C
Rate	10°C/min	Injection mode	Split, 250°C
Final temperature	280°C, 16 min	Injection volume	1 µL
Detector	FID, 300°C		



For more information visit www.trajanscimed.com or contact techsupport@trajanscimed.com