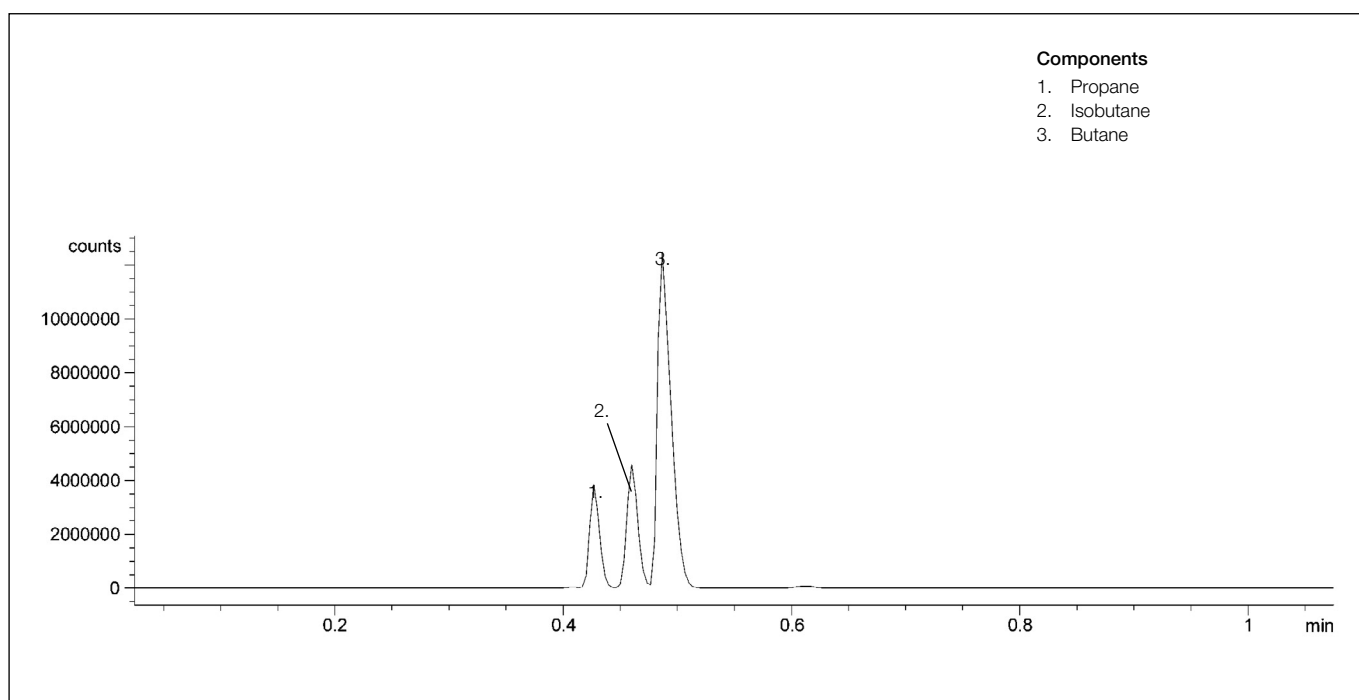


Analysis of cigarette lighter fuel

BPX5

Column part number	0541261		
Phase	BPX5	Carrier gas flow	1.7 mL/min
Column	6 m x 0.32 mm x 1.0 μ m	Constant flow	On
Sample	Butane mixture from lighter	Average linear velocity	35 cm/sec at 30°C
Temperature	30°C isothermal, 5 min	Injection mode	Split (100:1), 250°C
Detector	FID, 270°C	Injection volume	10 μ L
Carrier gas	He, 1.94 psi	Liner type	4 mm ID single taper



For more information visit www.trajanscimed.com or contact techsupport@trajanscimed.com