

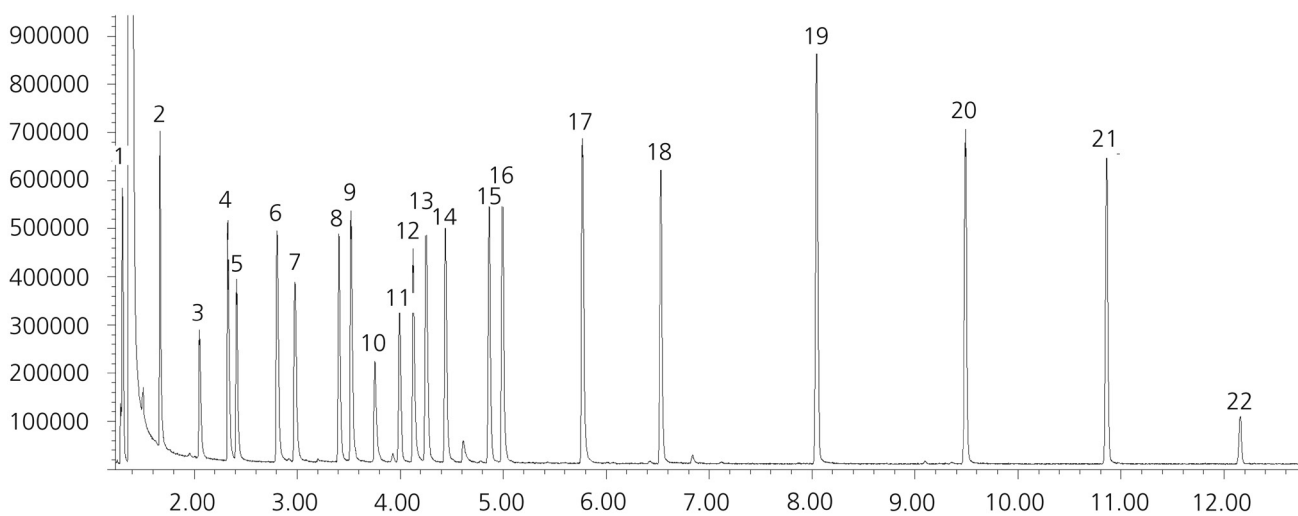
## Analysis of 22 ketones

**BPX35**

<b>Column part number</b>	<b>054701</b>		
Phase	BPX35	Carrier gas flow	1.6 mL/min
Column	30 m x 0.25 mm x 0.25 $\mu$ m	Constant flow	On
Sample	300 ppm in dichloromethane	Average linear velocity	35 cm/sec at 40°C
Initial temperature	40°C, 5 min	Injection mode	Split (80:1), 250°C
Rate	10°C/min	Injection volume	0.5 $\mu$ L
Final temperature	170°C, 5 min	Liner type	4 mm ID single taper
Detector	MS	Full scan / SIM	Full scan 45-450
Carrier gas	He, 25.6 psi		

**Components**

- |                         |                         |                         |                  |
|-------------------------|-------------------------|-------------------------|------------------|
| 1. Acetone              | 7. 3-Methyl-2-pentanone | 13. 4-Methyl-2-hexanone | 19. 2-Nonanone   |
| 2. 2-Butanone           | 8. 3-Hexanone           | 14. 5-Methyl-2-hexanone | 20. 2-Decanone   |
| 3. 3-Methyl-2-butanone  | 9. 2-Hexanone           | 15. 3-Heptanone         | 21. 2-Undecanone |
| 4. 2-Pentanone          | 10. Mesityl oxide       | 16. 2-Heptanone         | 22. 2-Dodecanone |
| 5. 3-Pentanone          | 11. 2-Methyl-3-hexanone | 17. Cyclohexanone       |                  |
| 6. 4-Methyl-2-pentanone | 12. Cyclopentanone      | 18. 2-Octanone          |                  |


 For more information visit [www.trajanscimed.com](http://www.trajanscimed.com) or contact [techsupport@trajanscimed.com](mailto:techsupport@trajanscimed.com)