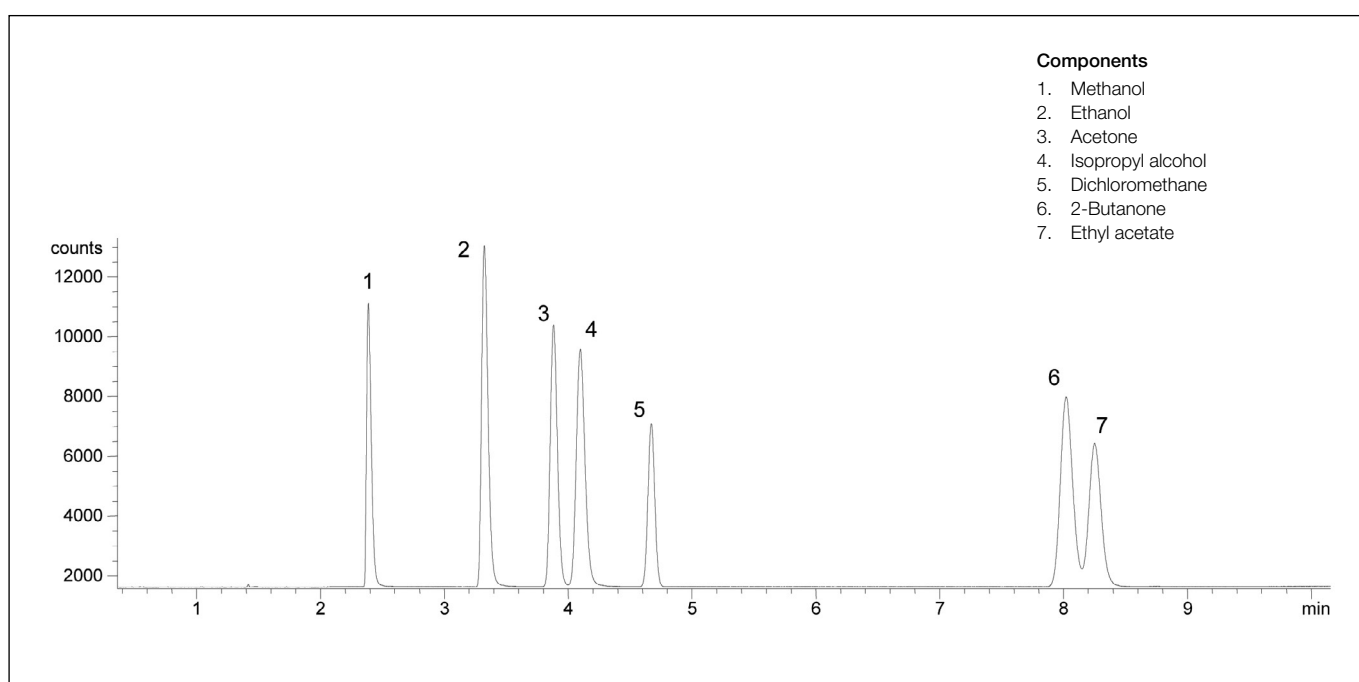


## Analysis of a common solvent mixture

**BP624**

|                     |                                |                         |                      |
|---------------------|--------------------------------|-------------------------|----------------------|
| Column part number  | 054832                         |                         |                      |
| Phase               | BP624                          | Carrier gas flow        | 2.2 mL/min           |
| Column              | 30 m x 0.32 mm x 1.8 µm        | Constant flow           | On                   |
| Sample              | 1000 ppm in dimethyl sulfoxide | Average linear velocity | 34 cm/sec at 32°C    |
| Initial temperature | 32°C, 9 min                    | Injection mode          | Split (100:1), 250°C |
| Rate                | 30°C/min                       | Injection volume        | 0.2 µL               |
| Final temperature   | 190°C, 0 min                   | Autosampler             | No                   |
| Detector            | FID                            | Liner type              | 4 mm ID double taper |
| Carrier gas         | He, 9.6 psi                    |                         |                      |



For more information visit [www.trajanscimed.com](http://www.trajanscimed.com) or contact [techsupport@trajanscimed.com](mailto:techsupport@trajanscimed.com)