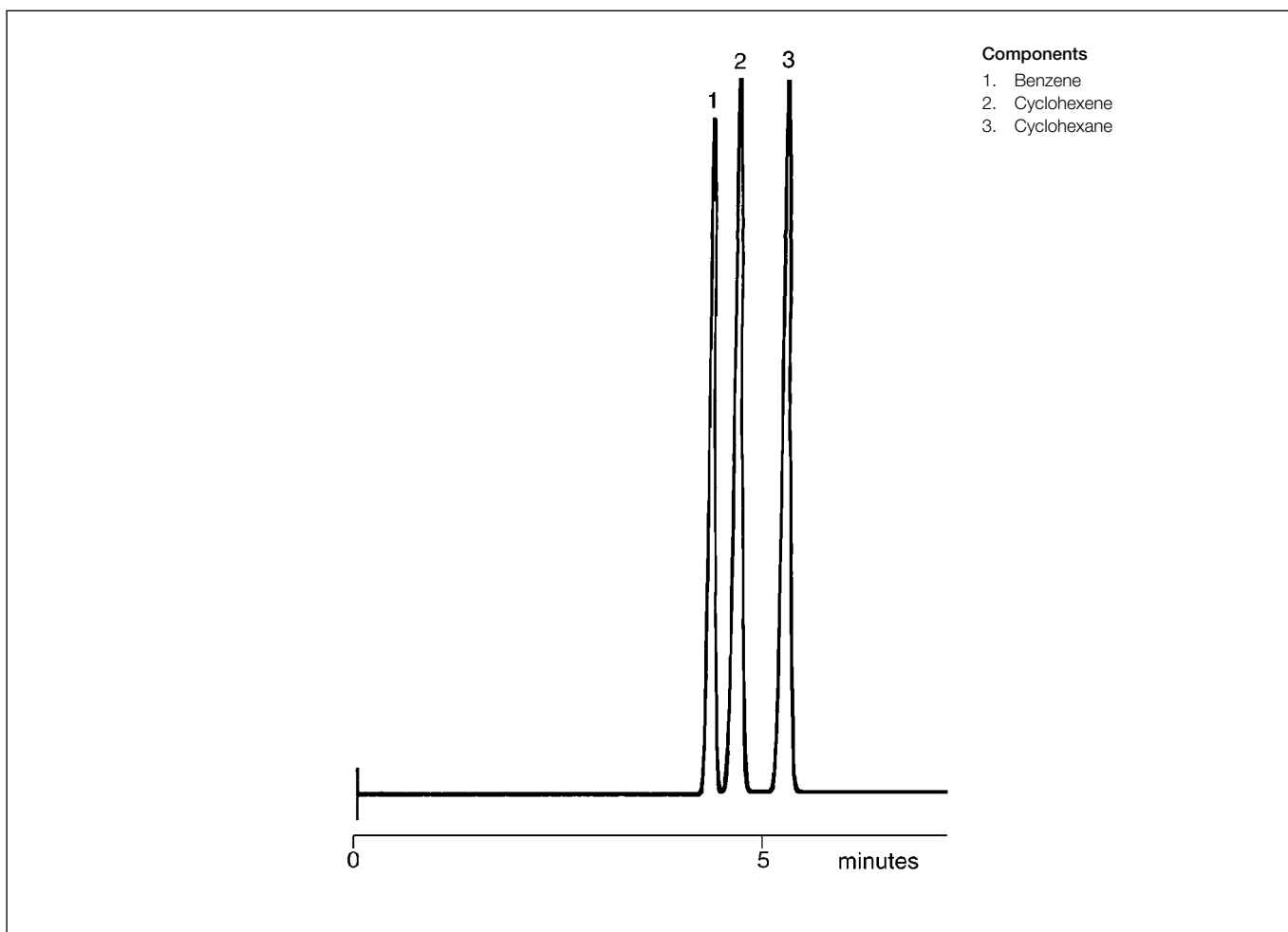


Analysis of petroleum hydrocarbons

BP1

Column part number	054095		
Phase	BP1	Carrier gas	He, 8 mL/min
Column	25 m x 0.53 mm x 5.0 μ m	Injection mode	Split (100:1), 200 °C
Initial temperature	40°C isothermal	Injection volume	0.1 μ L
Detector	FID, 320°C		



For more information visit www.trajanscimed.com or contact techsupport@trajanscimed.com