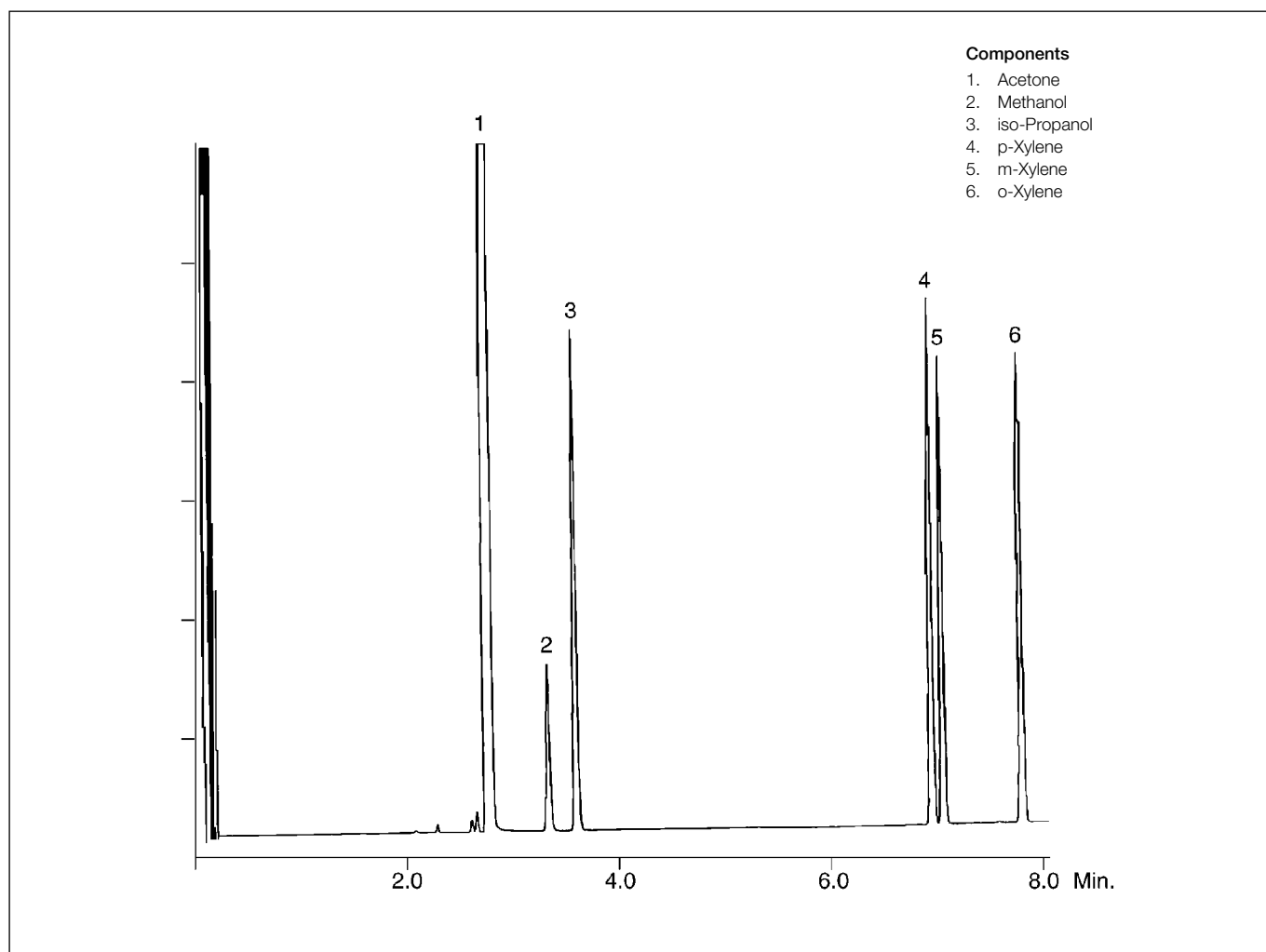


Analysis of a solvent mixture

BP20 (WAX)

| | | | |
|---------------------|-------------------------|------------------|-----------------------|
| Column part number | 054436 | | |
| Phase | BP20 (WAX) | Detector | FID, 280°C |
| Column | 25 m x 0.32 mm x 0.5 µm | Carrier gas | He, 6 psi |
| Initial temperature | 60°C, 3.5 min | Injection mode | Split (100:1), 240 °C |
| Rate | 15°C/min | Injection volume | 1 µL |
| Final temperature | 140°C | | |


 For more information visit www.trajanscimed.com or contact techsupport@trajanscimed.com