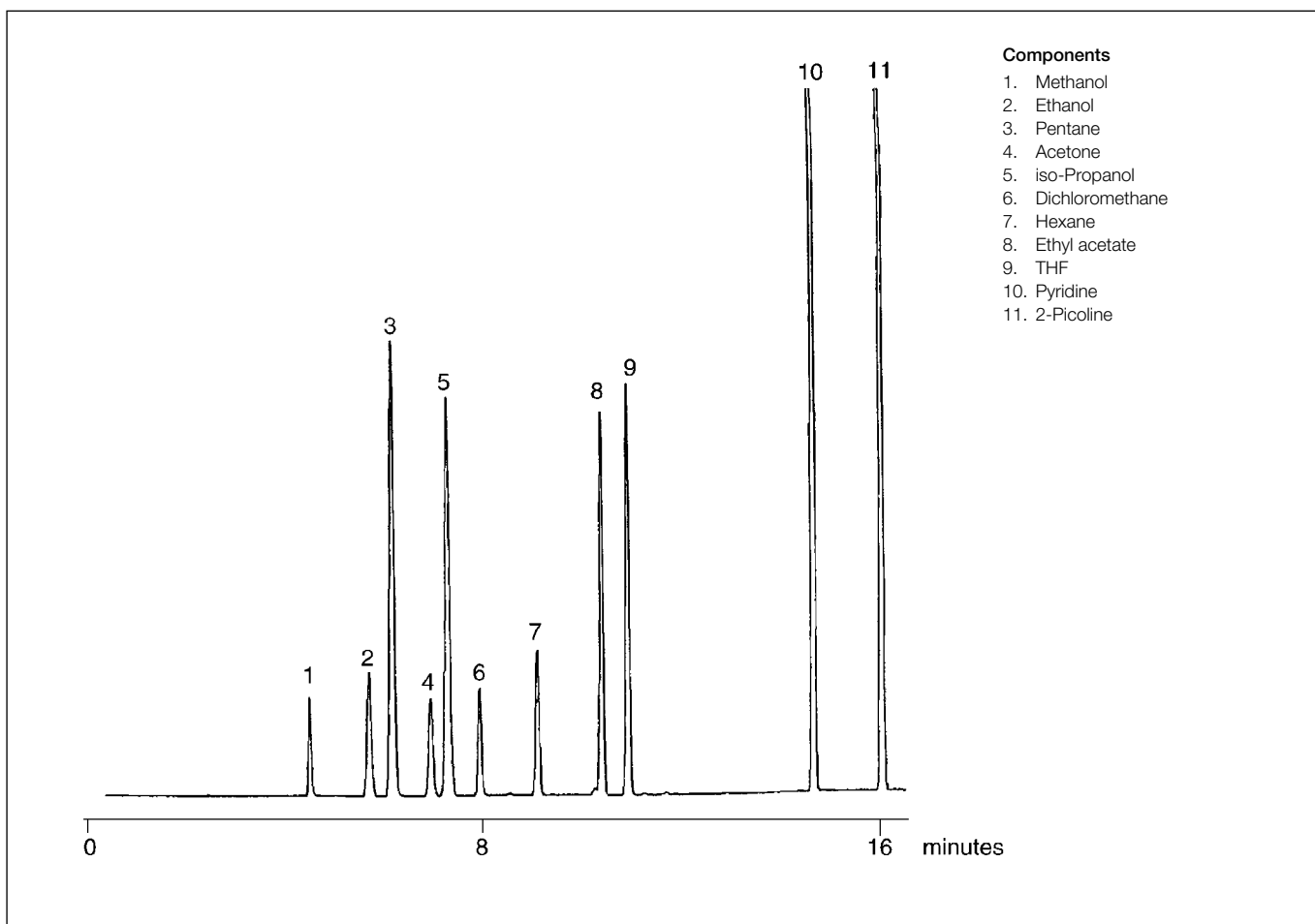


## Analysis of a solvent mixture

**BP624**

|                     |                         |                   |              |
|---------------------|-------------------------|-------------------|--------------|
| Column part number  | 054835                  |                   |              |
| Phase               | BP624                   | Final temperature | 160°C, 2 min |
| Column              | 50 m x 0.53 mm x 3.0 µm | Detector          | FID, 280°C   |
| Sample              | 250 ppm in hexane       | Carrier gas       | He, 16.6 psi |
| Initial temperature | 35°C, 6 min             | Injection mode    | Split (30:1) |
| Rate                | 15°C/min                |                   |              |



For more information visit [www.trajanscimed.com](http://www.trajanscimed.com) or contact [techsupport@trajanscimed.com](mailto:techsupport@trajanscimed.com)