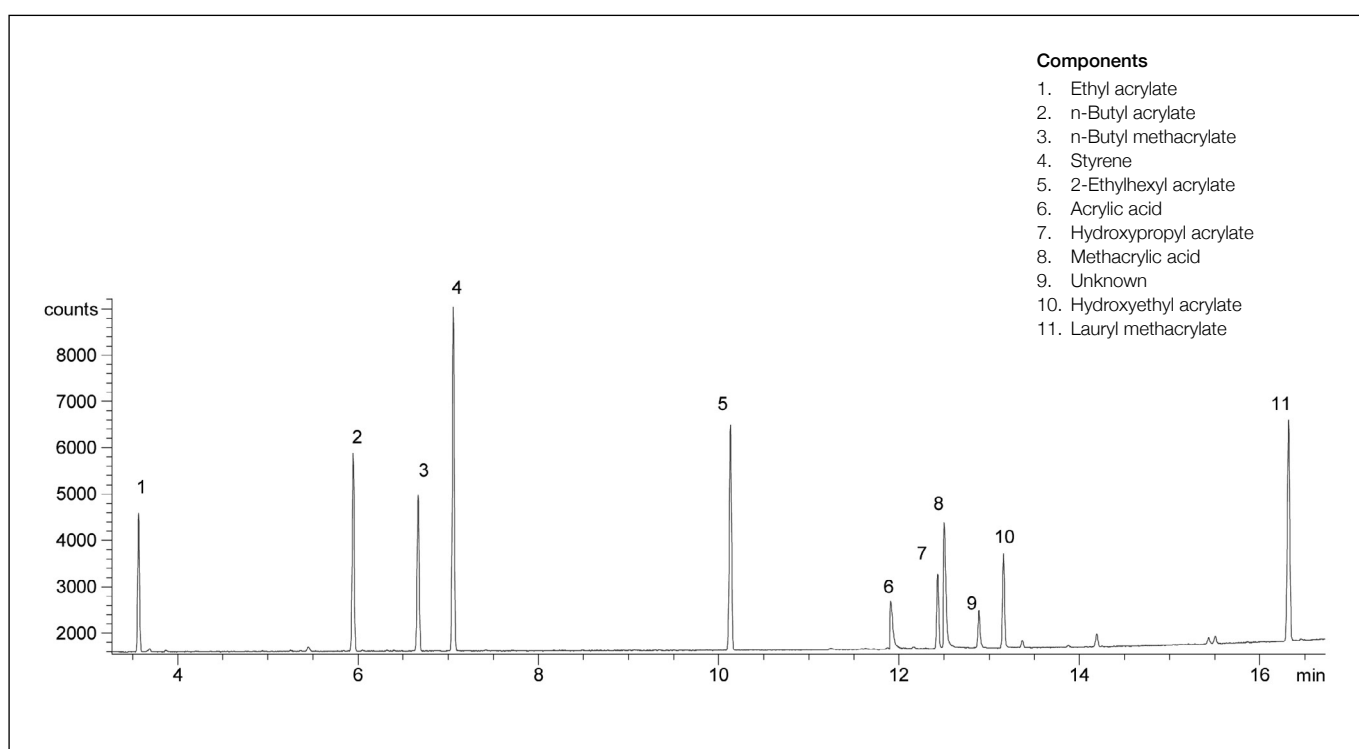


Analysis of various monomers

SolGel-WAX™

Column part number	054796		
Phase	SolGel-WAX™	Carrier gas flow	1.6 mL/min
Column	30 m x 0.25 mm x 0.25 µm	Constant flow	On
Sample	250 ppm in hexane	Average linear velocity	35 cm/sec at 40°C
Initial temperature	40°C, 1 min	Injection mode	Split (80:1), 250°C
Rate	10°C/min	Injection volume	1 µL
Final temperature	250°C	Autosampler	No
Detector	FID, 320°C	Liner type	4 mm ID Single Taper
Carrier gas	He, 16.6 psi		



For more information visit www.trajanscimed.com or contact techsupport@trajanscimed.com