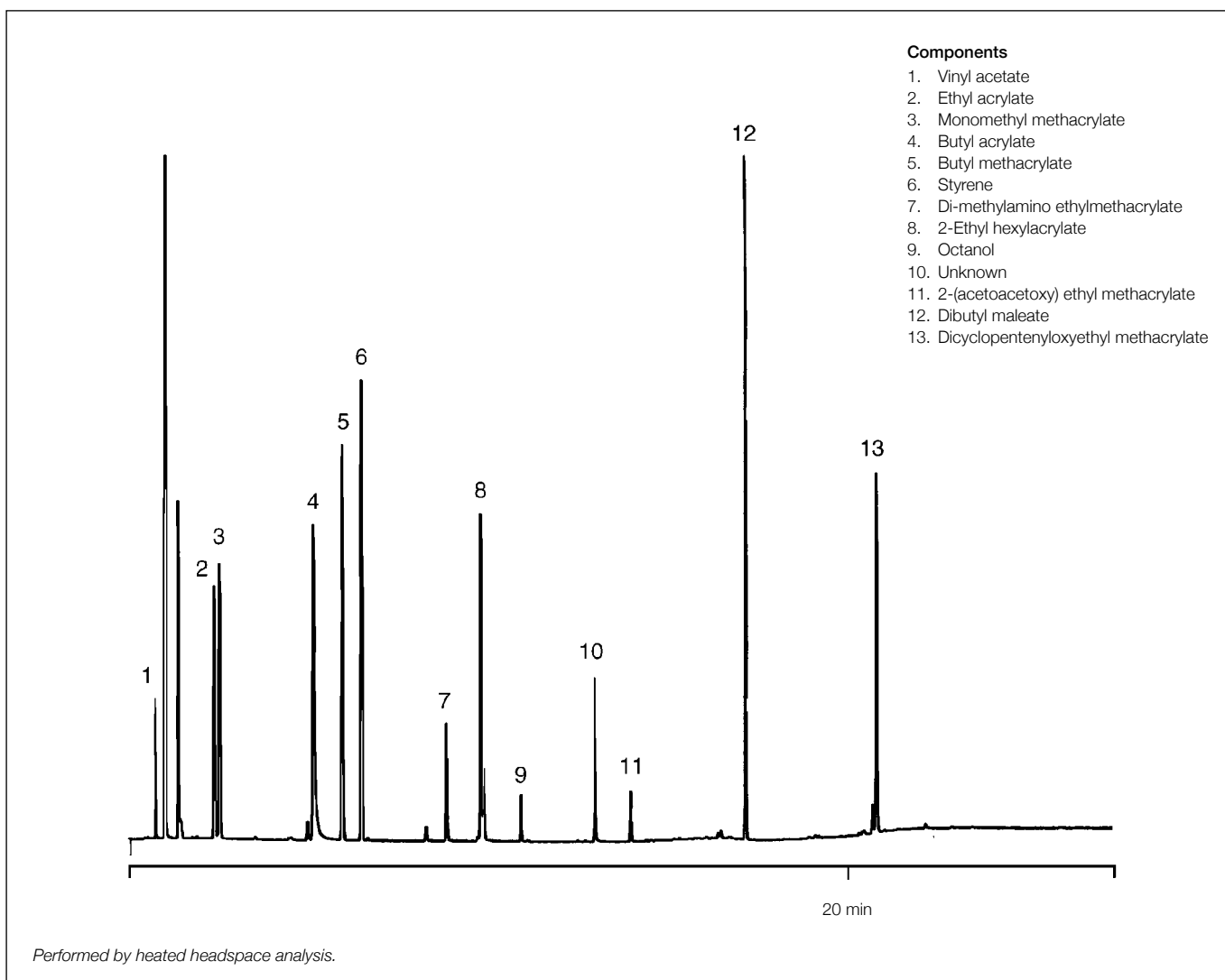


Analysis of unreacted monomers in latex

BP20 (WAX)

Column part number	054448		
Phase	BP20 (WAX)	Final temperature	230°C, 5 min
Column	25 m x 0.53 mm x 1.0 µm	Injection mode	Split, 280°C
Sample	10 ppm in methanol	Detector	FID, 280°C
Initial temperature	40°C, 2 min	Carrier gas	H ₂ , 4 psi
Rate	10°C/min		


 For more information visit www.trajanscimed.com or contact techsupport@trajanscimed.com