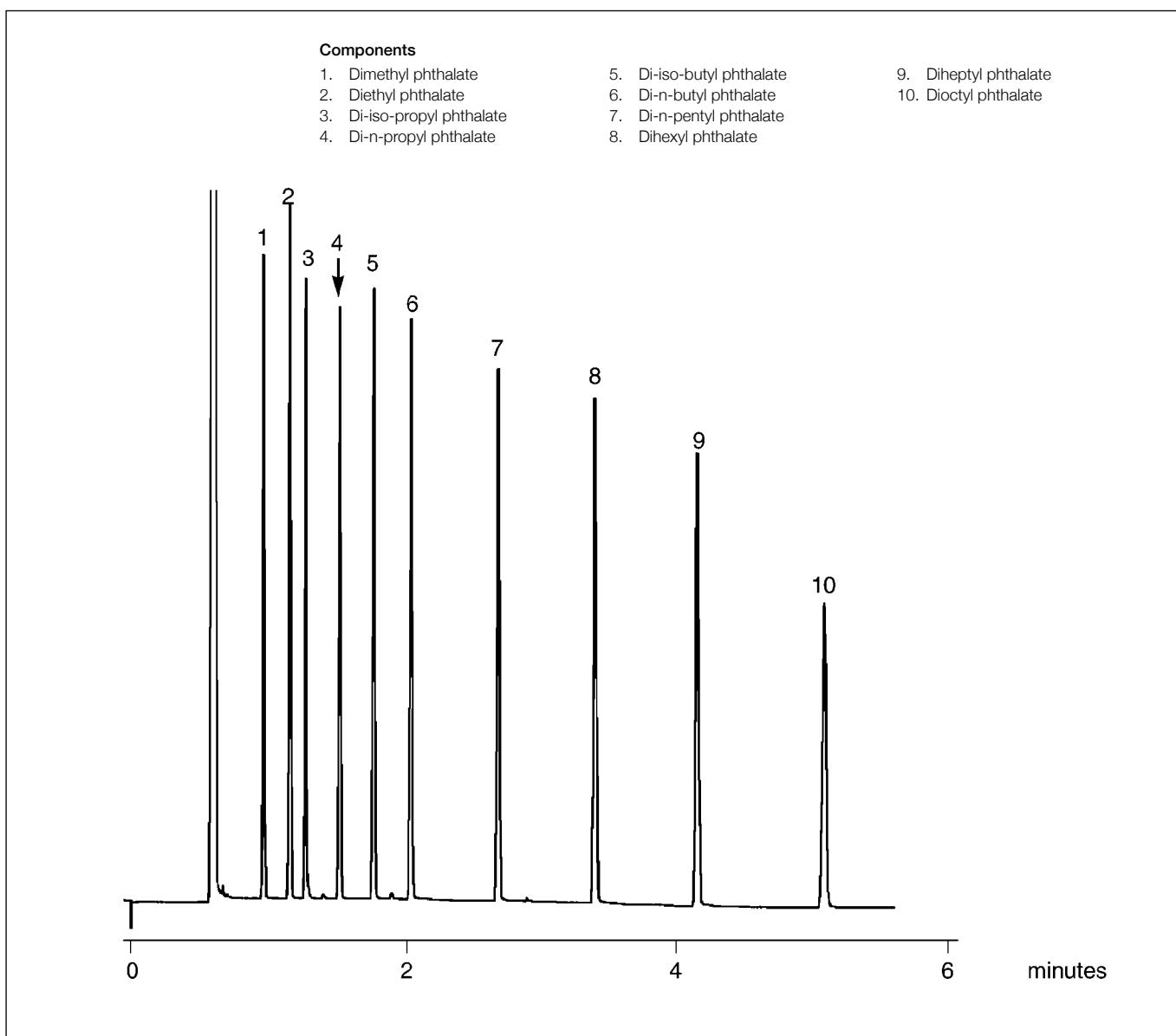


## Analysis of phthalate esters

BP1

Column part number	054046		
Phase	BP1	Final temperature	280°C, 0 min
Column	12 m x 0.22 mm x 0.25 µm	Detector	FID
Initial temperature	200°C, 0 min	Injection mode	Split
Rate	20°C/min		


 For more information visit [www.trajanscimed.com](http://www.trajanscimed.com) or contact [techsupport@trajanscimed.com](mailto:techsupport@trajanscimed.com)