

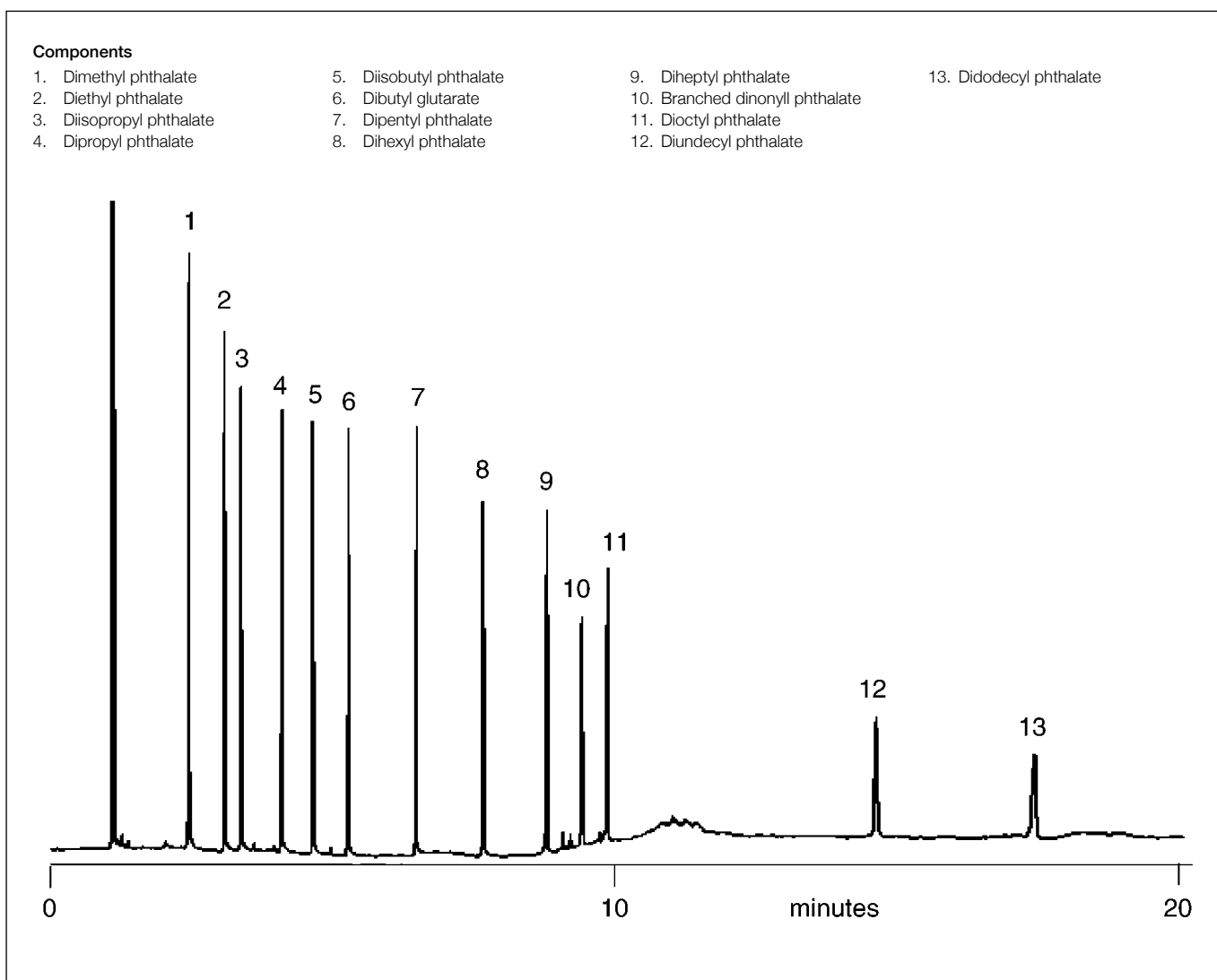
## Analysis of phthalate esters

BPX5

|                     |                         |                   |                        |
|---------------------|-------------------------|-------------------|------------------------|
| Column part number  | 054125                  |                   |                        |
| Phase               | BPX5                    | Final temperature | 350°C, 5 min           |
| Column              | 25 m x 0.32 mm x 0.5 µm | Detector          | FID                    |
| Initial temperature | 180°C, 0 min            | Carrier gas       | H <sub>2</sub> , 6 psi |
| Rate                | 15°C/min                | Injection mode    | Split                  |

### Components

- |                          |                         |                                |                         |
|--------------------------|-------------------------|--------------------------------|-------------------------|
| 1. Dimethyl phthalate    | 5. Diisobutyl phthalate | 9. Diheptyl phthalate          | 13. Didodecyl phthalate |
| 2. Diethyl phthalate     | 6. Dibutyl glutarate    | 10. Branched dinonyl phthalate |                         |
| 3. Diisopropyl phthalate | 7. Dipentyl phthalate   | 11. Dioctyl phthalate          |                         |
| 4. Dipropyl phthalate    | 8. Dihexyl phthalate    | 12. Diundecyl phthalate        |                         |



For more information visit [www.trajanscimed.com](http://www.trajanscimed.com) or contact [techsupport@trajanscimed.com](mailto:techsupport@trajanscimed.com)