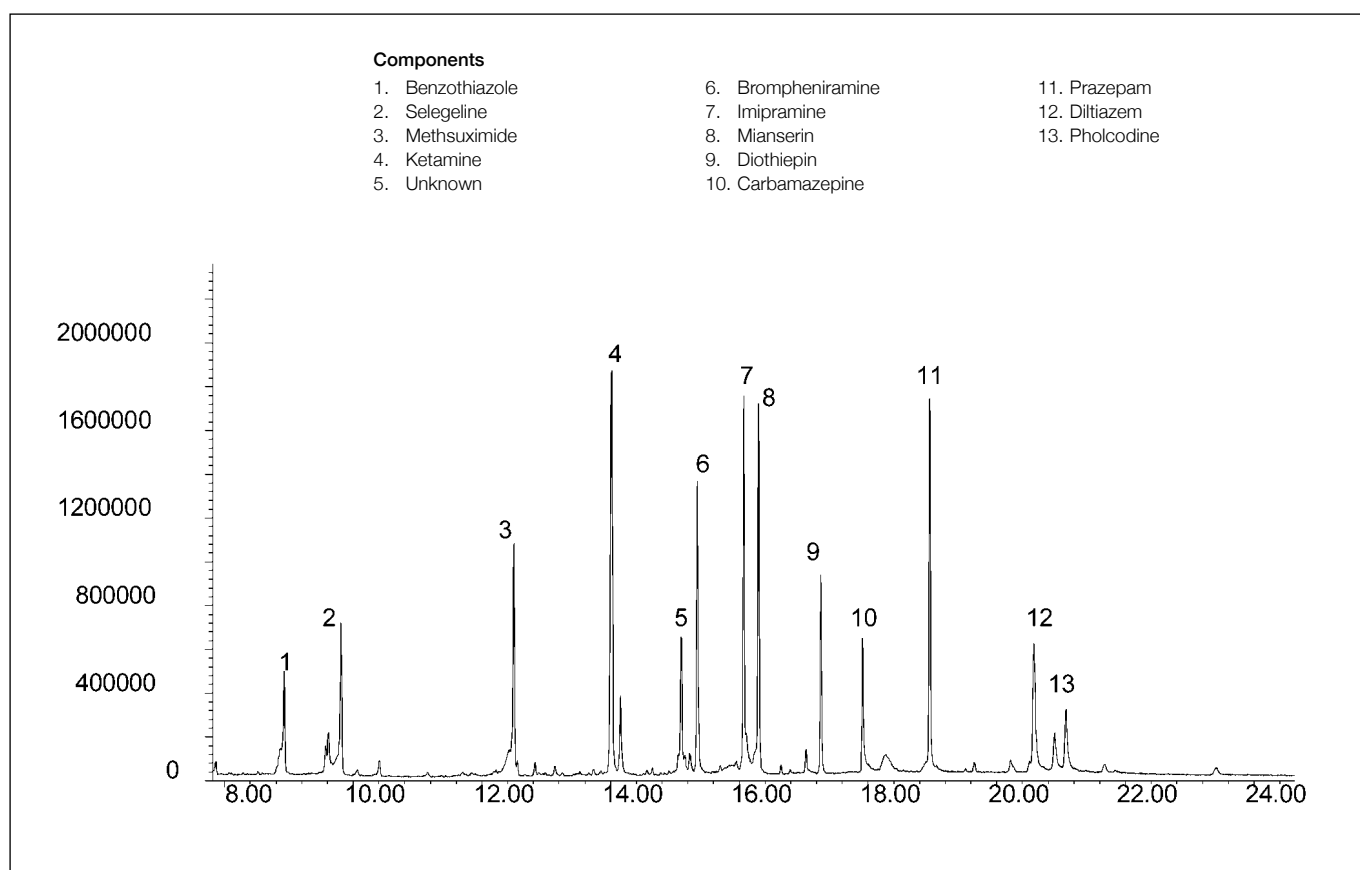


## Analysis of a variety of antidepressant and anticonvulsant drugs

**BPX50**

<b>Column part number</b>	<b>054751</b>		
Phase	BPX50	Carrier gas flow	1.8 mL/min
Column	30 m x 0.25 mm x 0.25 $\mu$ m	Constant flow	On
Sample	5-10 ppm in methanol	Average linear velocity	35 cm/sec at 40°C
Initial temperature	150°C, 0.5 min	Injection mode	Splitless, 250°C
Rate 1	10°C/min to 180°C	Purge on time	0.5 min
Rate 2	1.5°C/min to 220°C	Purge on (split) vent flow	60 mL/min
Rate 3	30°C/min to 260°C	Injection volume	1 $\mu$ L
Final temperature	260°C, 5 min	Liner type	4 mm ID Single Taper
Detector	FID, 320°C	Full scan / SIM	Full scan 45-450
Carrier gas	He, 25.7 psi		


 For more information visit [www.trajanscimed.com](http://www.trajanscimed.com) or contact [techsupport@trajanscimed.com](mailto:techsupport@trajanscimed.com)