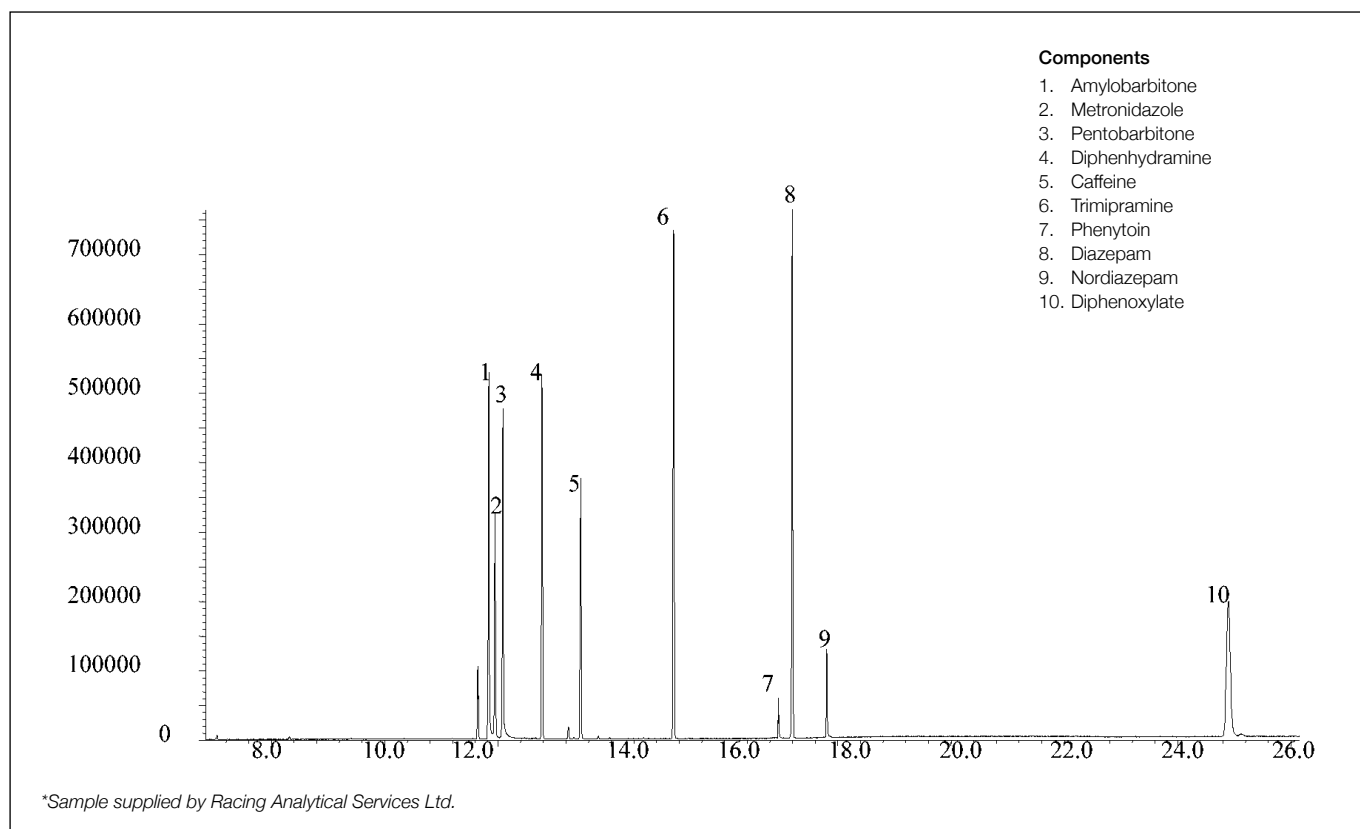


Analysis of horse racing test mix

BPX35

Column part number	054701		
Phase	BPX35	Carrier gas	He, 14.5 psi
Column	30 m x 0.25 mm x 0.25 μ m	Carrier gas flow	1.5 mL/min
Sample	Horse racing standard 10 ppm in methanol*	Constant flow	On
		Average linear velocity	45 cm/sec at 75°C
Initial temperature	75°C, 2 min	Injection mode	Splitless, 250°C
Rate 1	15°C/min to 300°C	Purge on time	0.5 min
Rate 2	20°C/min to 320°C	Purge on (split) vent flow	60 mL/min
Final temperature	320°C, 8 min	Injection volume	1 μ L
Detector	MS	Liner type	4 mm ID Double Taper


 For more information visit www.trajanscimed.com or contact techsupport@trajanscimed.com