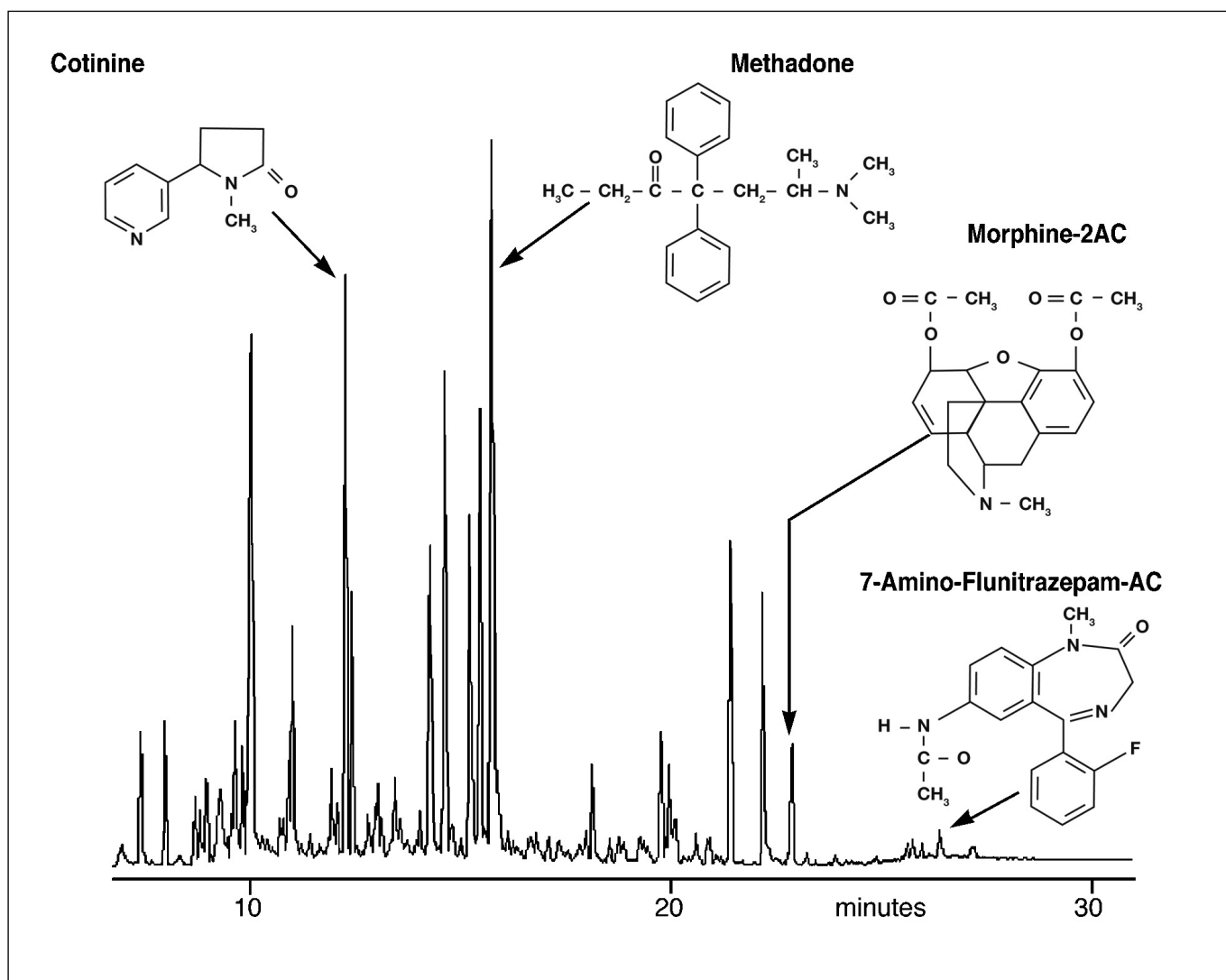


## Analysis of drugs of abuse

BPX35

Column part number	054711		
Phase	BPX35	Rate 2	7°C/min to 295°C
Column	25 m x 0.22 mm x 0.25 µm	Rate 3	20°C/min to 340°C
Initial temperature	80°C	Final temperature	340°C, 6 min
Rate 1	15°C/min to 200°C	Detector	FID


 For more information visit [www.trajanscimed.com](http://www.trajanscimed.com) or contact [techsupport@trajanscimed.com](mailto:techsupport@trajanscimed.com)