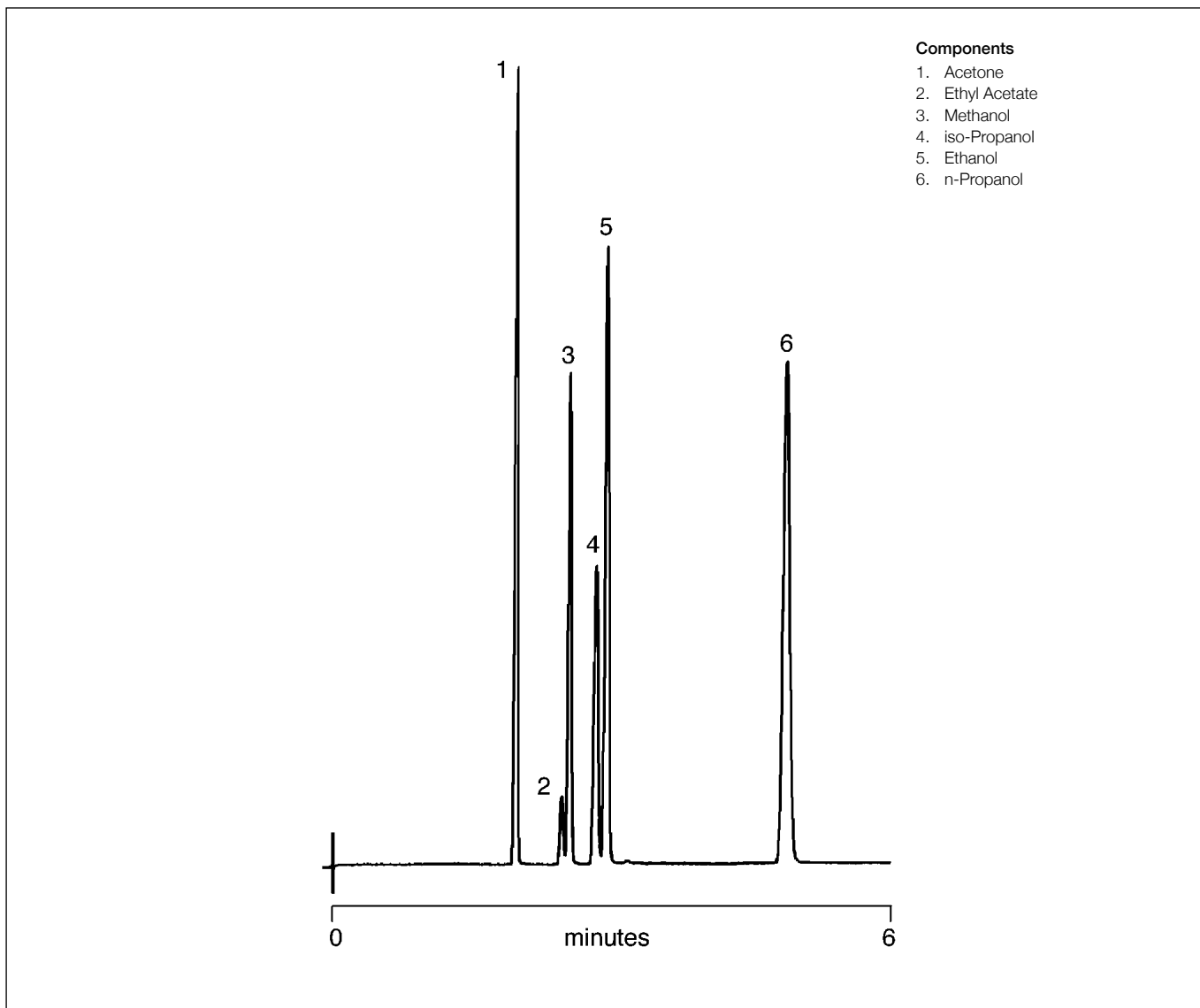


## Analysis of blood alcohol

BP20 (WAX)

Column part number	054442		
Phase	BP20 (WAX)	Detector	FID
Column	25 m x 0.32 mm x 1.0 $\mu$ m	Injection mode	Split (20:1)
Initial temperature	Isothermal, 60°C		



For more information visit [www.trajanscimed.com](http://www.trajanscimed.com) or contact [techsupport@trajanscimed.com](mailto:techsupport@trajanscimed.com)