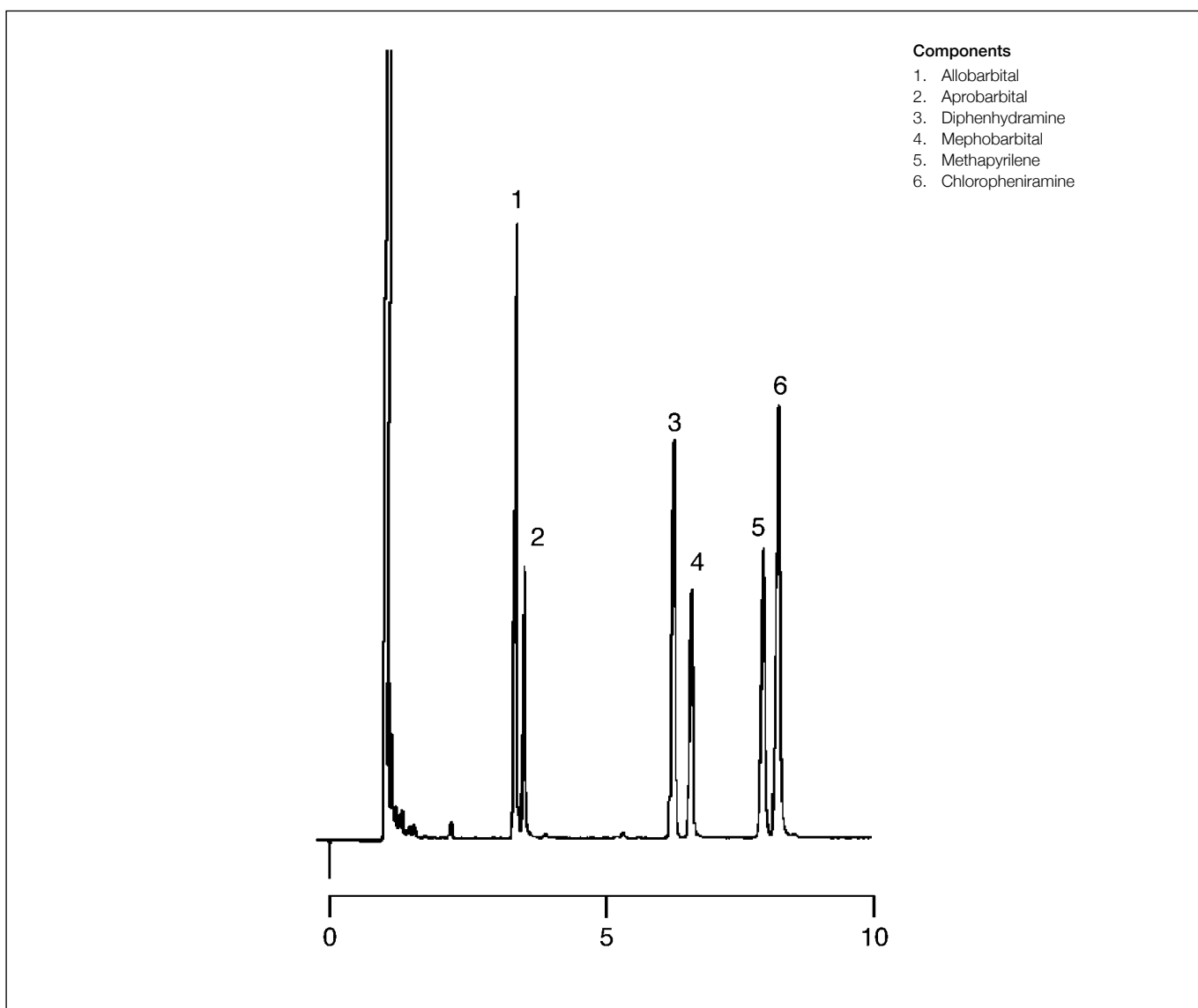


## Analysis of sedatives/hypnotics

BP1

Column part number	054087		
Phase	BP1	Final temperature	250°C, 3 min
Column	25 m x 0.53 mm x 1.0 µm	Detector	FID
Initial temperature	180°C, 0 min	Injection mode	Split
Rate	10°C/min		



For more information visit [www.trajanscimed.com](http://www.trajanscimed.com) or contact [techsupport@trajanscimed.com](mailto:techsupport@trajanscimed.com)