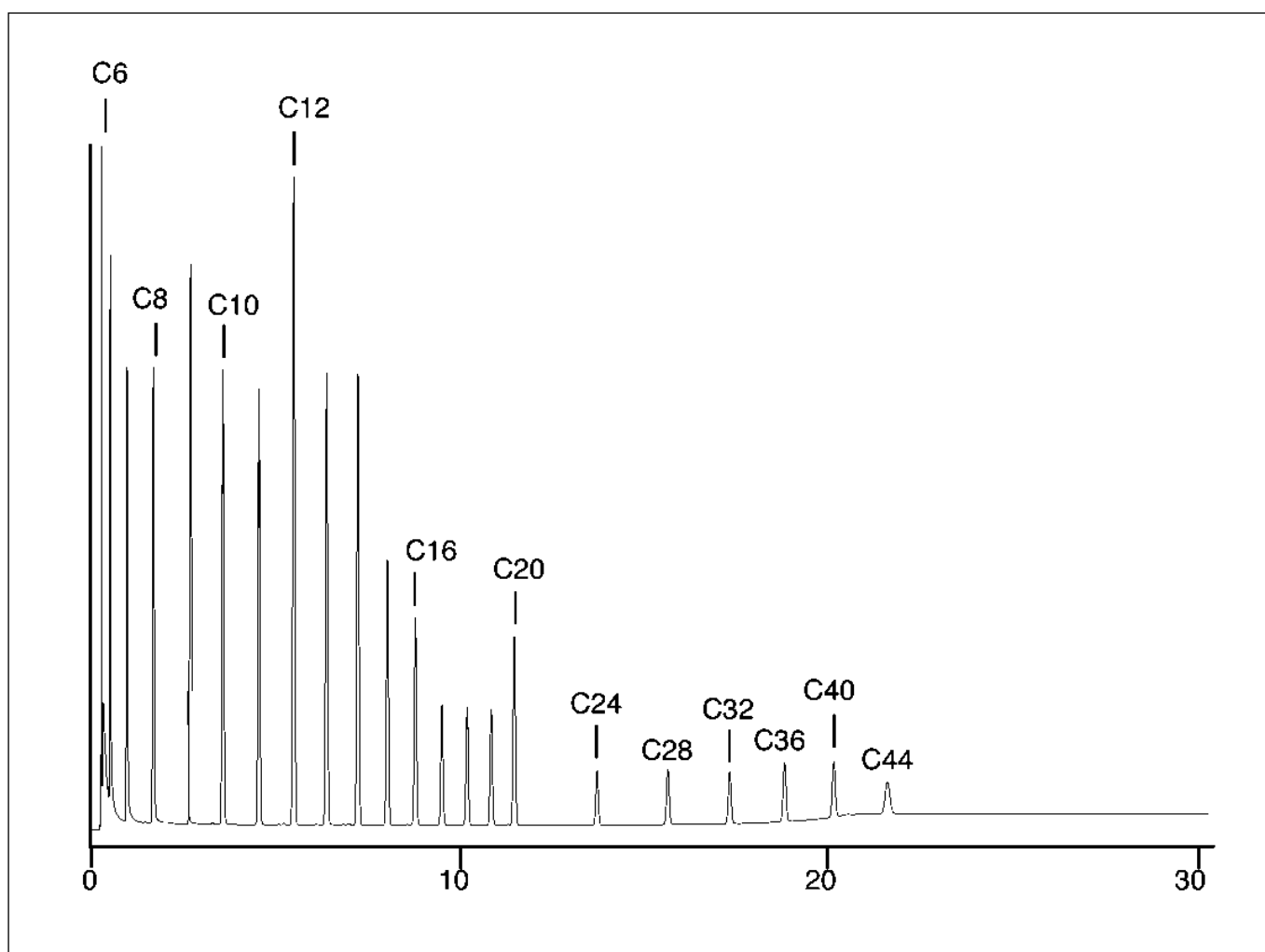


Analysis of standard for D2887

BPX1

Column part number	054802		
Phase	BPX1	Final temperature	350°C, 10 min
Column	10 m x 0.53 mm x 2.65 µm	Detector	FID, 400°C
Initial temperature	40°C	Carrier gas	He
Rate	15°C/min	Carrier gas flow	20 mL/min



For more information visit www.trajanscimed.com or contact techsupport@trajanscimed.com