

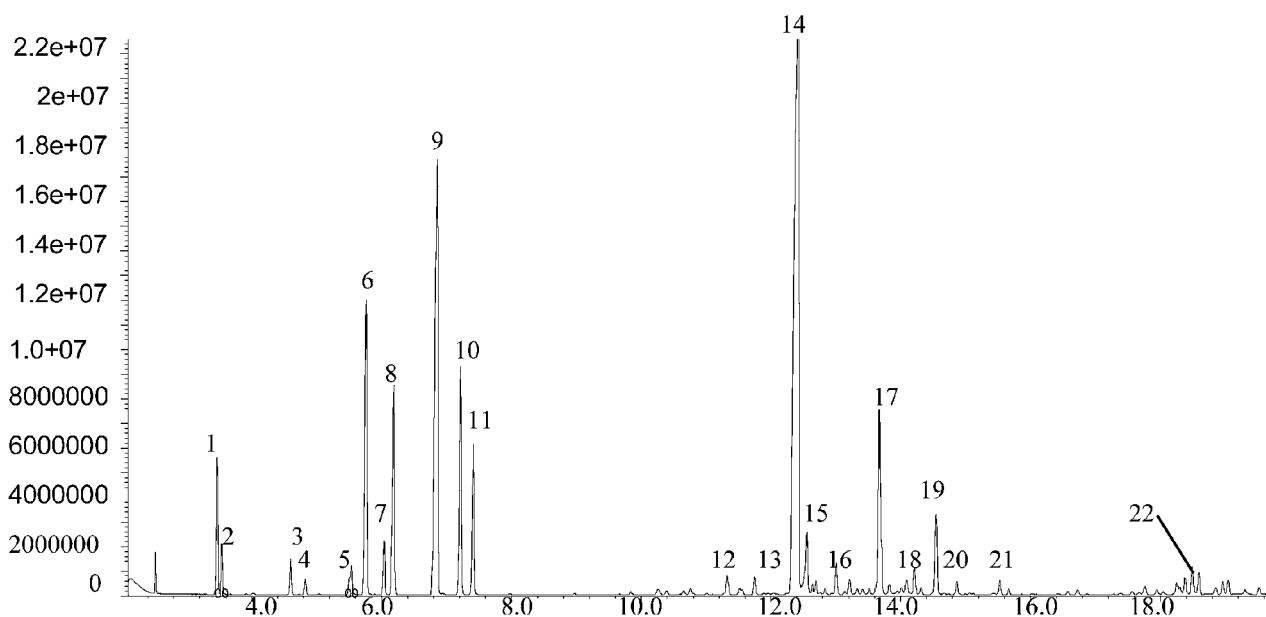
## Analysis of teatree oil

SolGel-WAX™

Column part number	054796		
Phase	SolGel-WAX™	Carrier gas flow	1.8 mL/min
Column	30 m x 0.25 mm x 0.25 µm	Constant flow	On
Sample	10 ppm in methanol	Average linear velocity	35 cm/sec at 40°C
Initial temperature	40°C, 1 min	Injection mode	Split (100:1), 250°C
Rate	8°C/min	Injection volume	0.2 µL
Final temperature	220°C, 5 min	Liner type	4 mm ID single taper
Detector	MS	Full scan / SIM	Full scan 45-450
Carrier gas	He, 25.7 psi		

**Components**

- |                   |                 |                       |                      |
|-------------------|-----------------|-----------------------|----------------------|
| 1. α-Pinene       | 7. Limonene     | 13. 1-Terpineol       | 19. δ-Cadinene       |
| 2. α-Phellandrene | 8. 1,8-Cineole  | 14. Terpinen-4-ol     | 20. Cadina-1,4-diene |
| 3. β-Pinene       | 9. γ-Terpinene  | 15. Aromadendrene     | 21. (-) Calamenene   |
| 4. Sabinene       | 10. p-Cymene    | 16. Alloaromadendrene | 22. Globulol         |
| 5. Myrcene        | 11. Terpinolene | 17. α-Terpineol       |                      |
| 6. α-Terpinene    | 12. α-Gurjunene | 18. Bicyclogermacrene |                      |


 For more information visit [www.trajanscimed.com](http://www.trajanscimed.com) or contact [techsupport@trajanscimed.com](mailto:techsupport@trajanscimed.com)