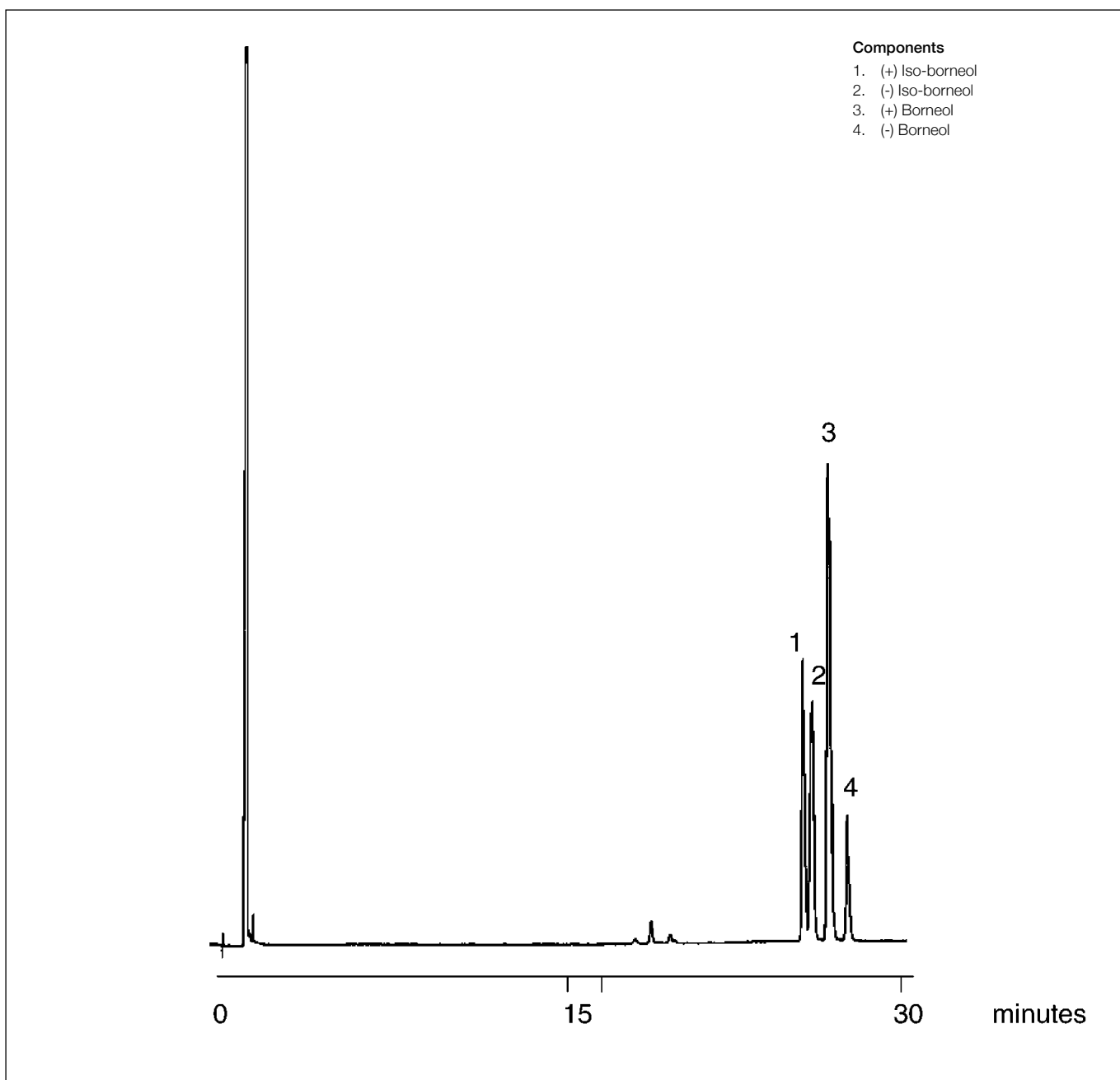


Analysis of borneols

CYDEX-B™

Column part number	054900		
Phase	CYDEX-B™	Final temperature	130°C
Column	25 m x 0.22 mm x 0.25 µm	Detector	FID
Initial temperature	90°C, 1 min	Carrier gas	H ₂ , 12 psi
Rate	2°C/min	Injection mode	Split


 For more information visit www.trajanscimed.com or contact techsupport@trajanscimed.com